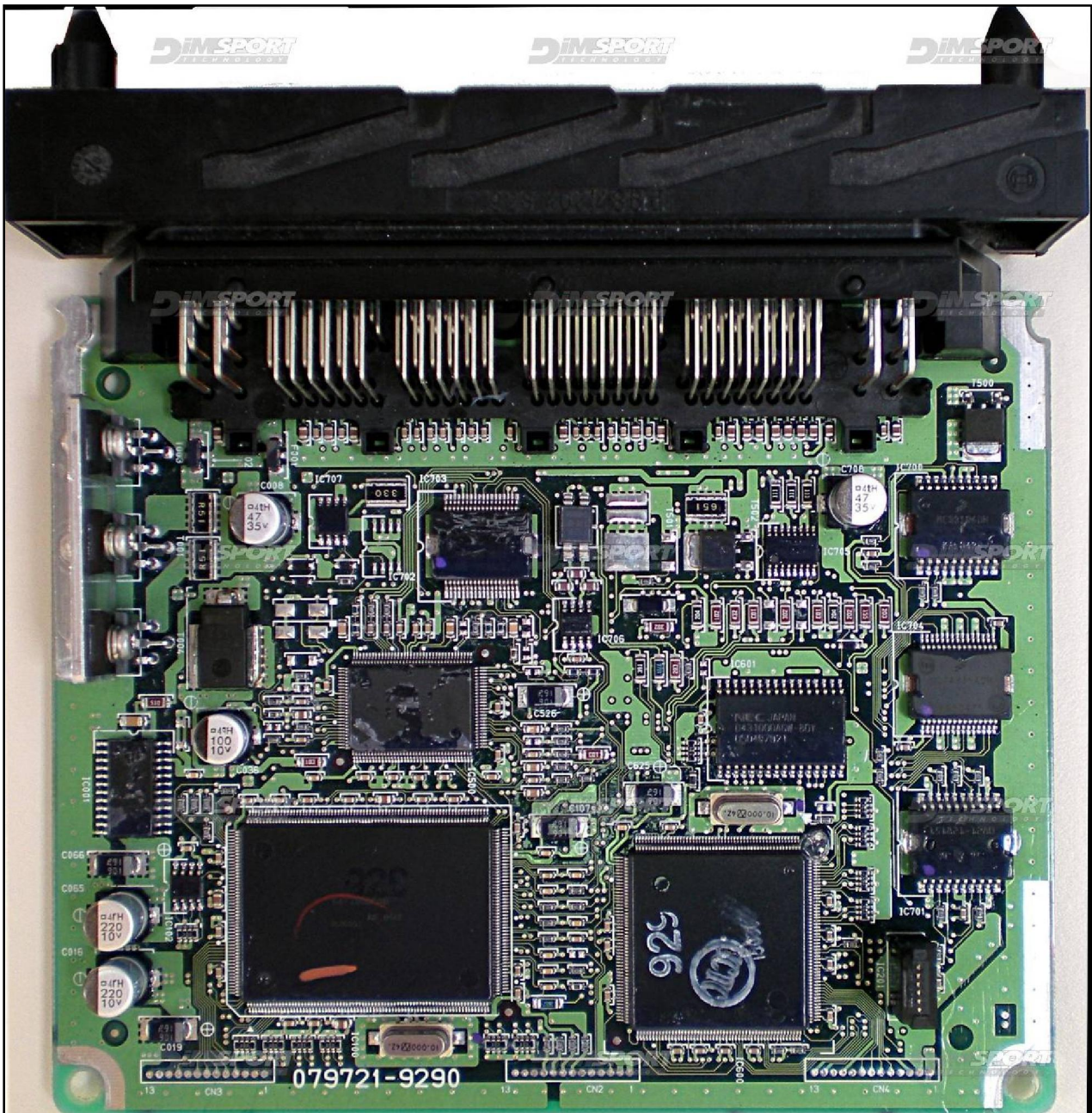


DENSO SH7058 VOLVO

plugin **326**
plugin **499**

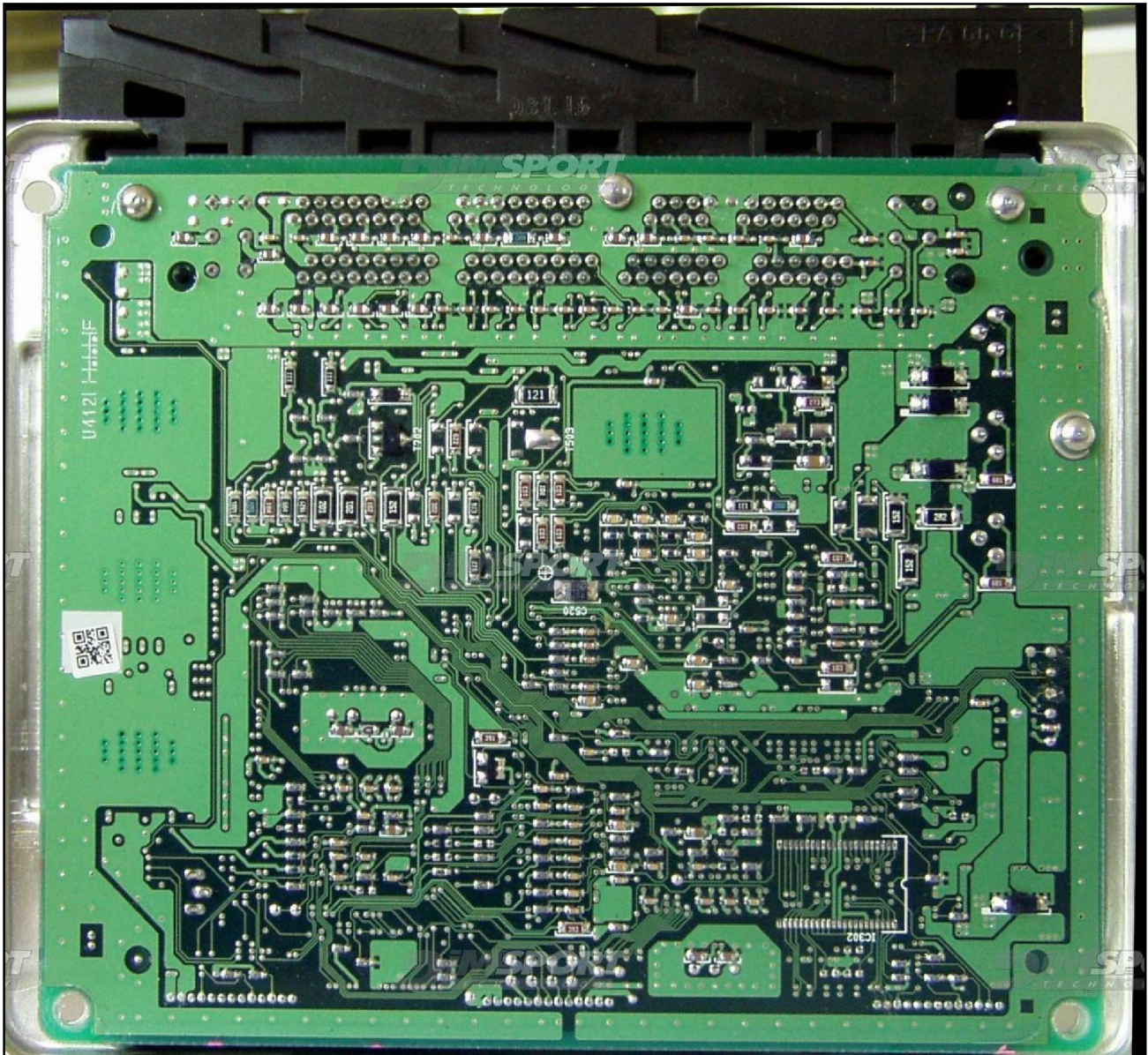
ECU TYPE 001

ECU top side



DENSO SH7058 VOLVO

ECU bottom side



DENSO SH7058 VOLVO

DIRECT CONNECTION

In order to connect to the ECU use the CABLE F32GN037C.
Make sure that the POWER led (red) on Trasdata is ON.

COLORE FILO WIRE COLOUR	DESCRIZIONE DESCRIPTION
ROSSO RED	POSITIVO DIRETTO POWER BATTERY
ARANCIO ORANGE	POSITIVO SOTTO QUADRO POWER SWITCH ON
NERO BLACK	MASSA GND
GIALLO YELLOW	KLINE
VERDE GREEN	CAN LOW
BIANCO WHITE	CAN HIGH
GRIGIO GREY	POL4 BOOT
BLU BLUE	POL5 CNF1
VIOLA/GRIGIO PURPLE/GREY	TENSIONE PROG. PROG. VOLTAGE
MARRONE BROWN	RESET



ECU CONNECTOR



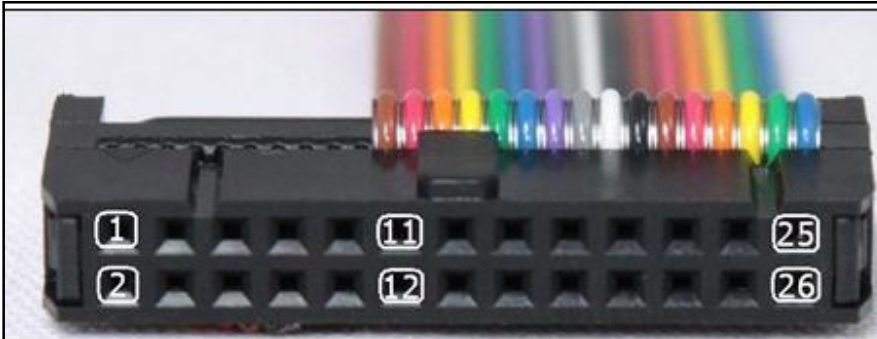
WARNING :

on this ECU you must use two different flat cables: one is for the READING procedure and one is for the WRITING procedure.

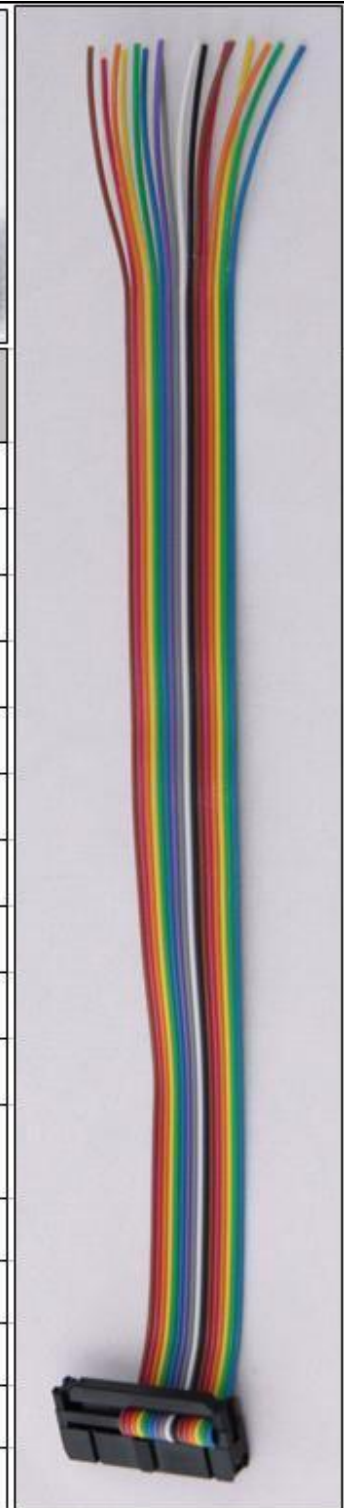
DENSO SH7058 VOLVO

DIRECT CONNECTION – ECU READING:

For the READING procedure use the FLAT cable F34NTF53



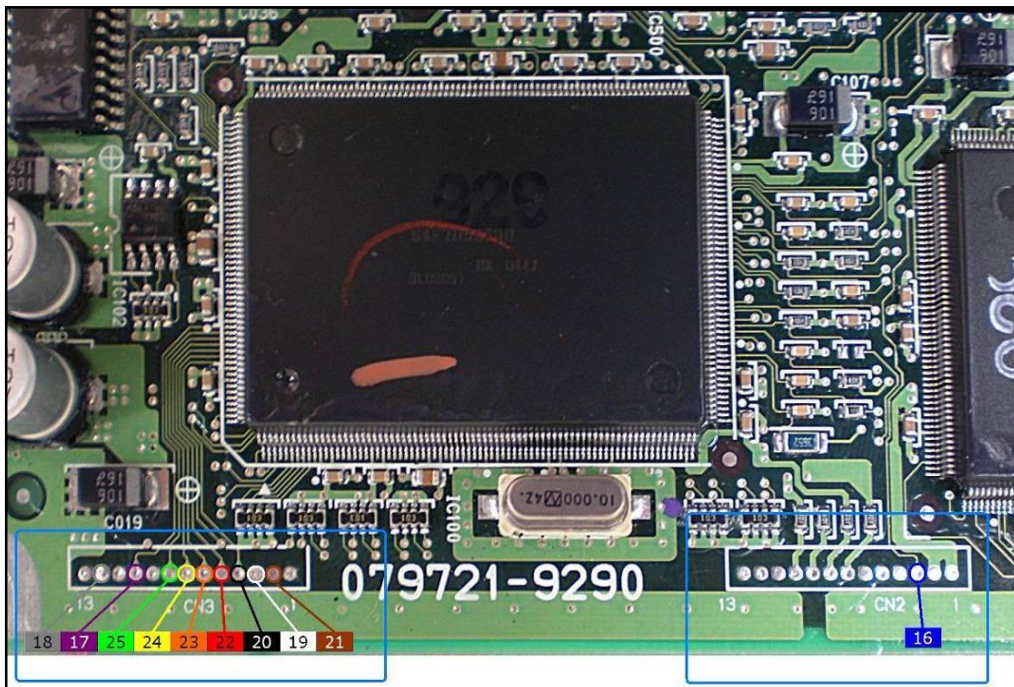
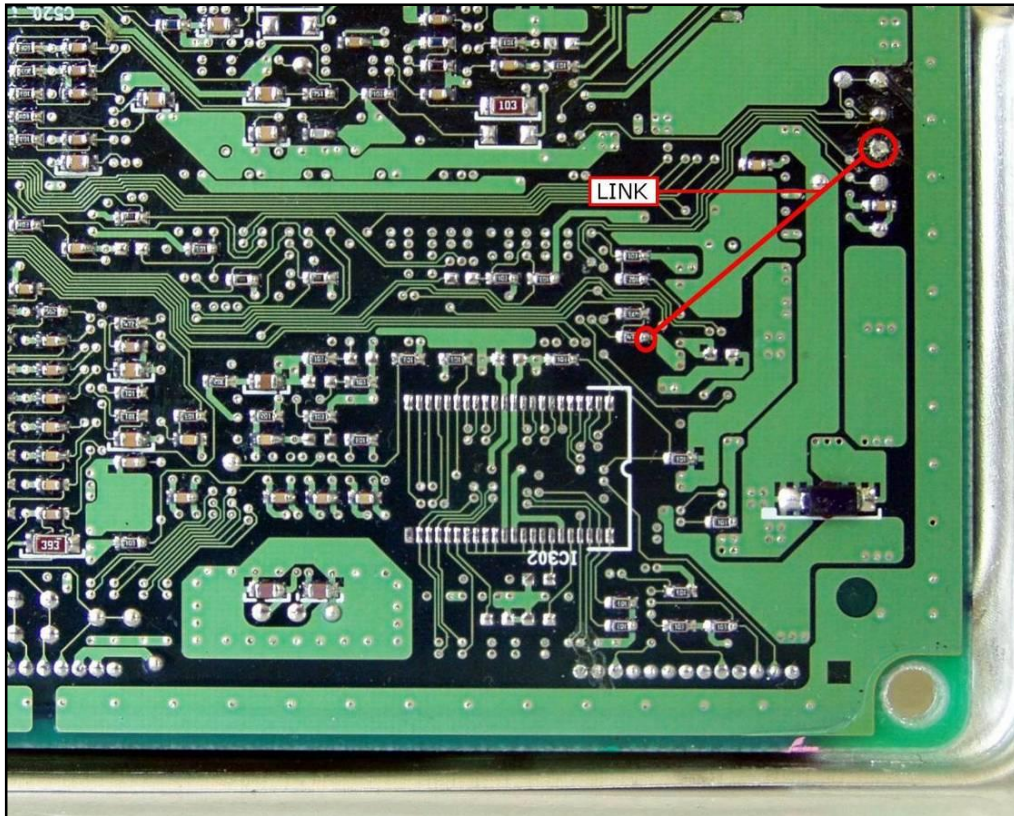
Pin	Colore Colour
11	Non usato Not used
12	Non usato Not used
13	Non usato Not used
14	Non usato Not used
15	Non usato Not used
16	Blu Blue
17	Viola Violet
18	Grigio Grey
19	Bianco White
20	Nero Black
21	Marrone Brown
22	Rosso Red
23	Arancio Orange
24	Giallo Yellow
25	Verde Green
26	Non usato Not used



DENSO SH7058 VOLVO

For a correct soldering procedure clean very well the soldering lay-by pins from the plastic film. We suggest you to use a fine grit glass-paper smoothing by gentle pressure the lay by pins connection.

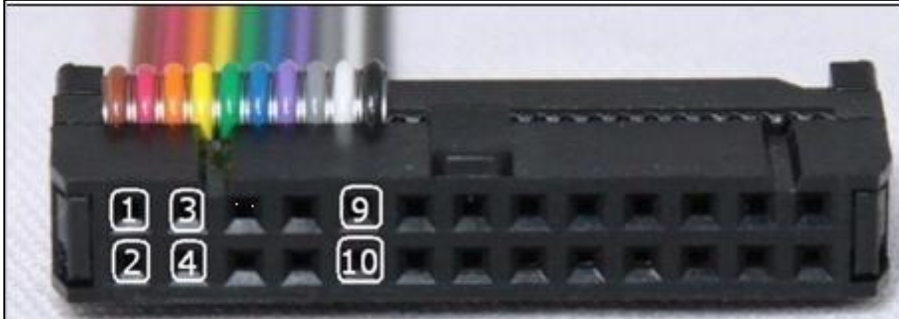
In order to read it is necessary to link the 2 pads (make a little bridge) on the bottom side as shown in the picture here below. At the end of the correct reading remove the bridge.



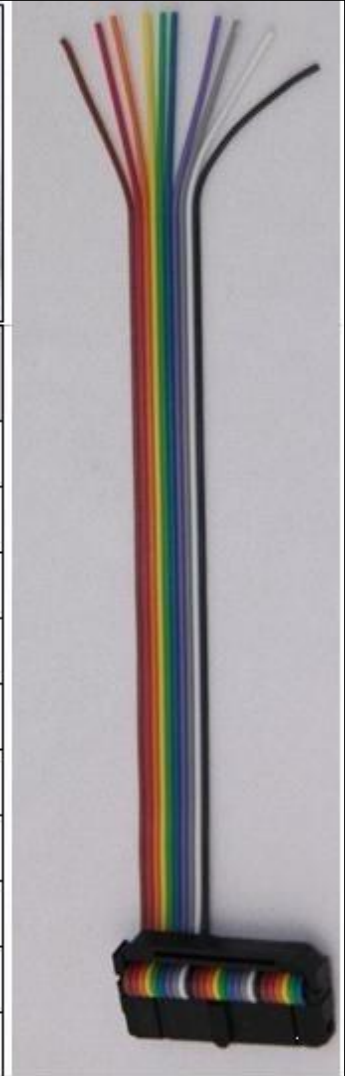
DENSO SH7058 VOLVO

DIRECT CONNECTION – ECU WRITING:

For the WRITING procedure use the FLAT cable F34NTF51

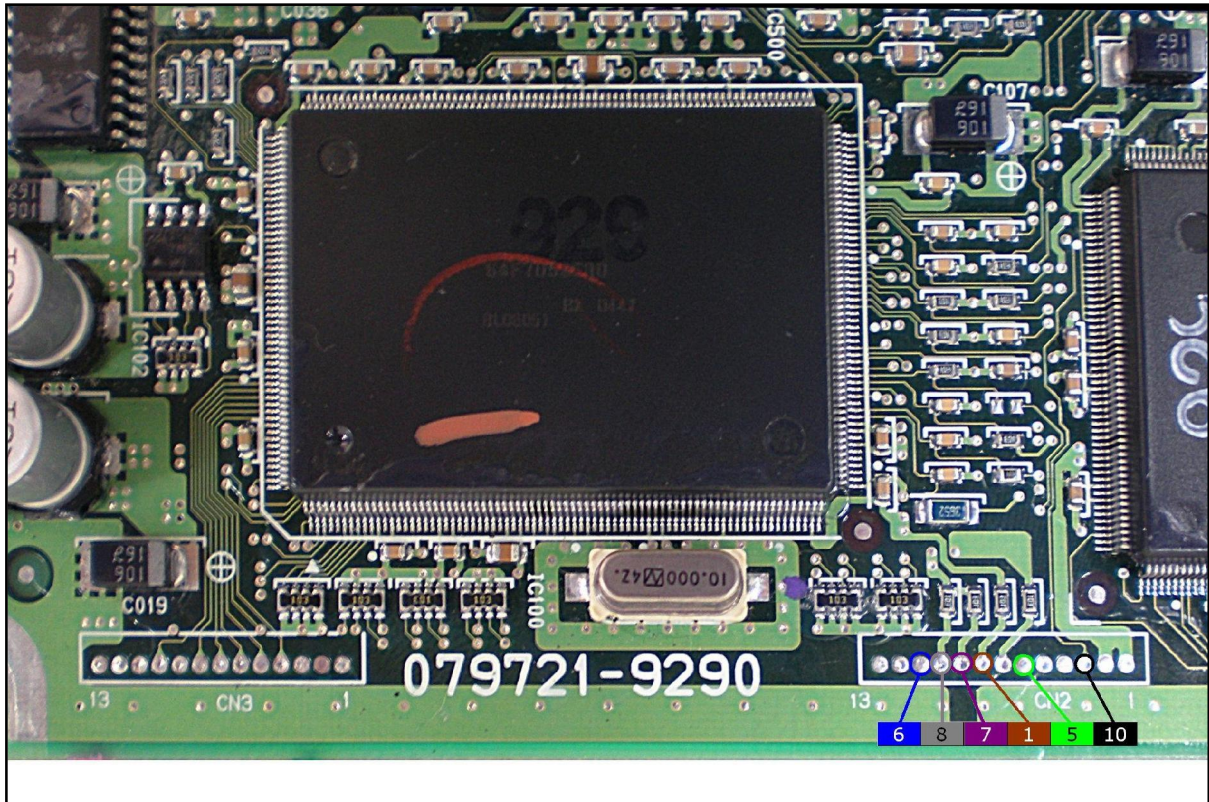


Pin	Colore Colour
1	Marrone Brown
2	Non usato Not used
3	Non usato Not used
4	Non usato Not used
5	Verde Green
6	Blu Blue
7	Viola Violet
8	Grigio Grey
9	Non usato Not used
10	Nero Black



DENSO SH7058 VOLVO

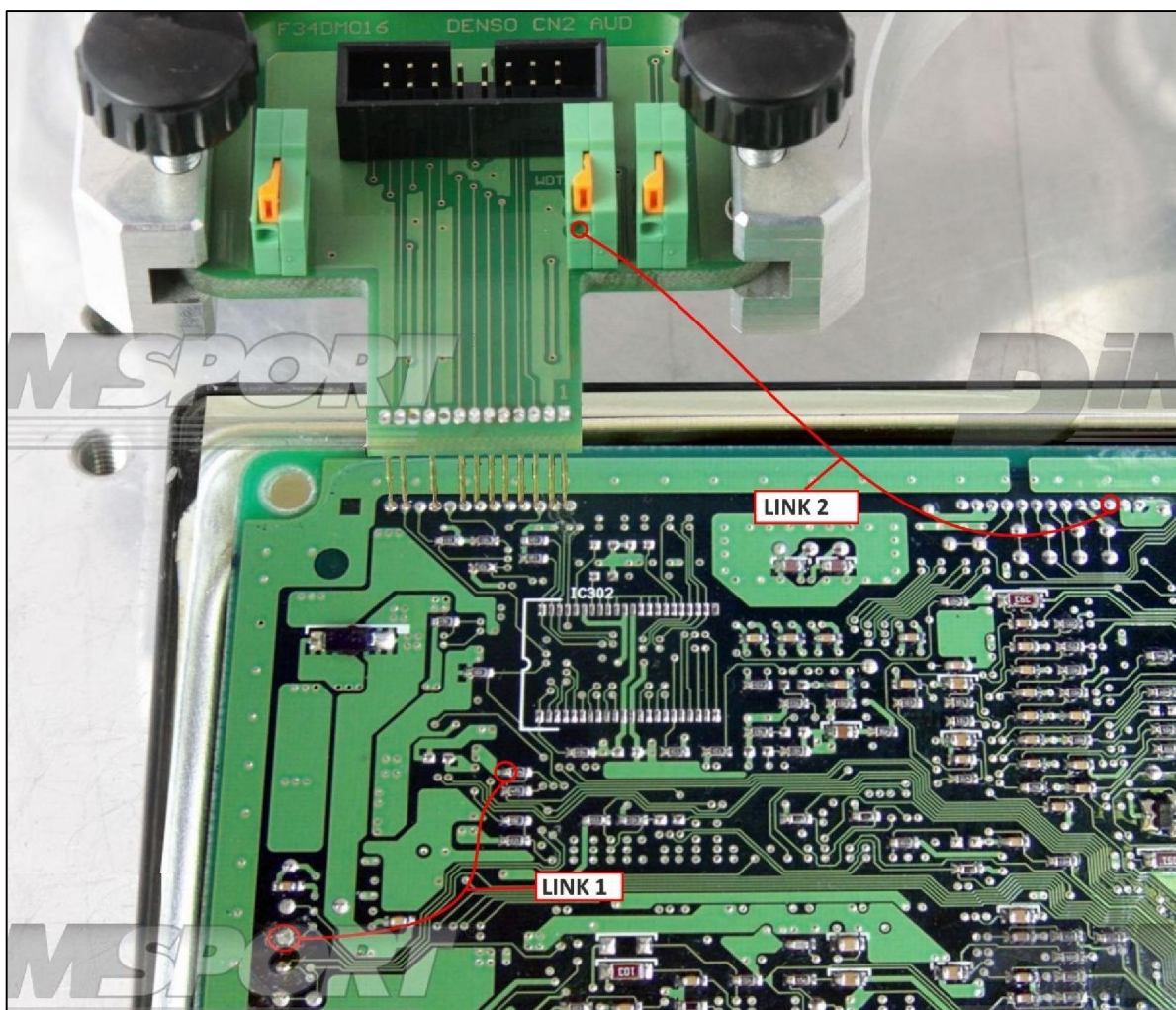
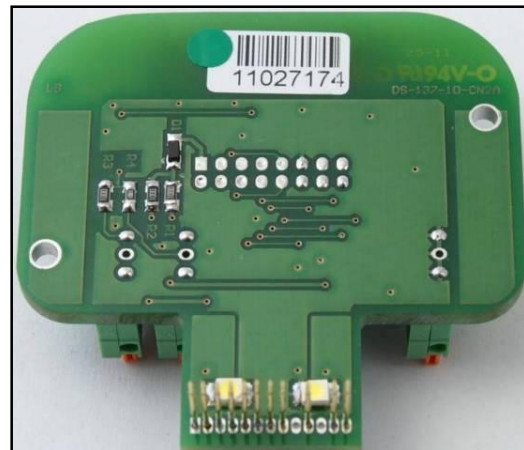
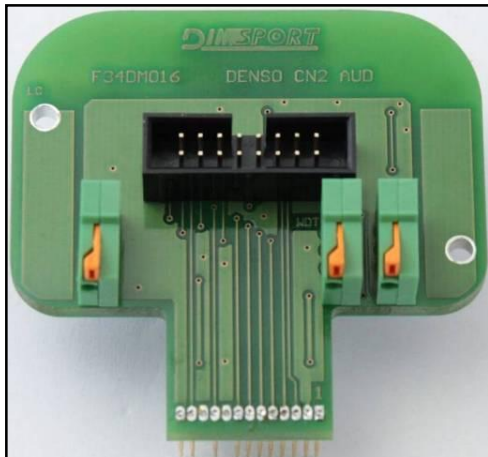
For a correct soldering procedure clean very well the soldering lay-by pins from the plastic film. We suggest you to use a fine grit glass-paper smoothing by gentle pressure the lay by pins connection.



DENSO SH7058 VOLVO

DIMA CONNECTION – ECU READING

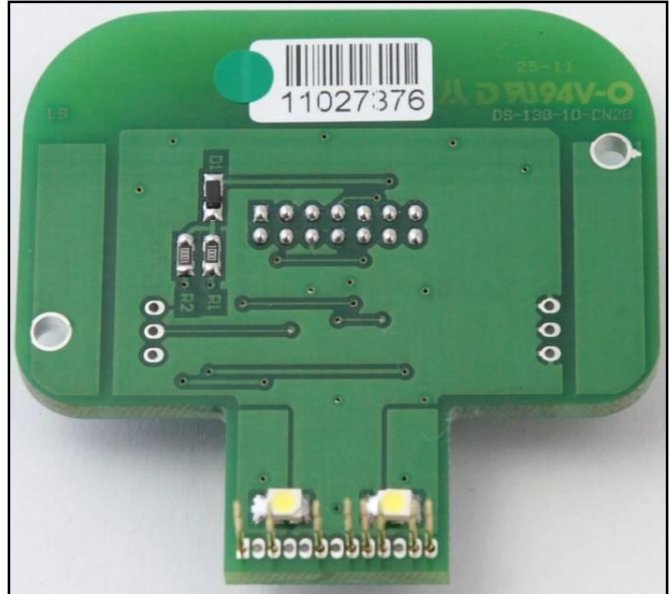
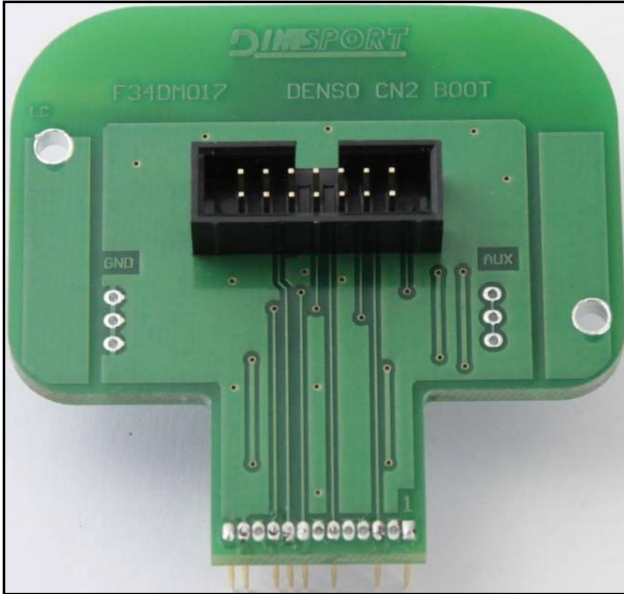
Power the ECU with the F32GN037C wiring. Use the DIMA adapter F34DM016. The lay-by pins for the DIMA connection are on the BOTTOM SIDE of the ecu, but in order to read it is necessary to make the bridge LINK between 2 pads as shown in the picture and then create the LINK2 by connecting the WDT with a wire to the pad shown in the picture here below.



DENSO SH7058 VOLVO

DIMA CONNECTION – ECU WRITING

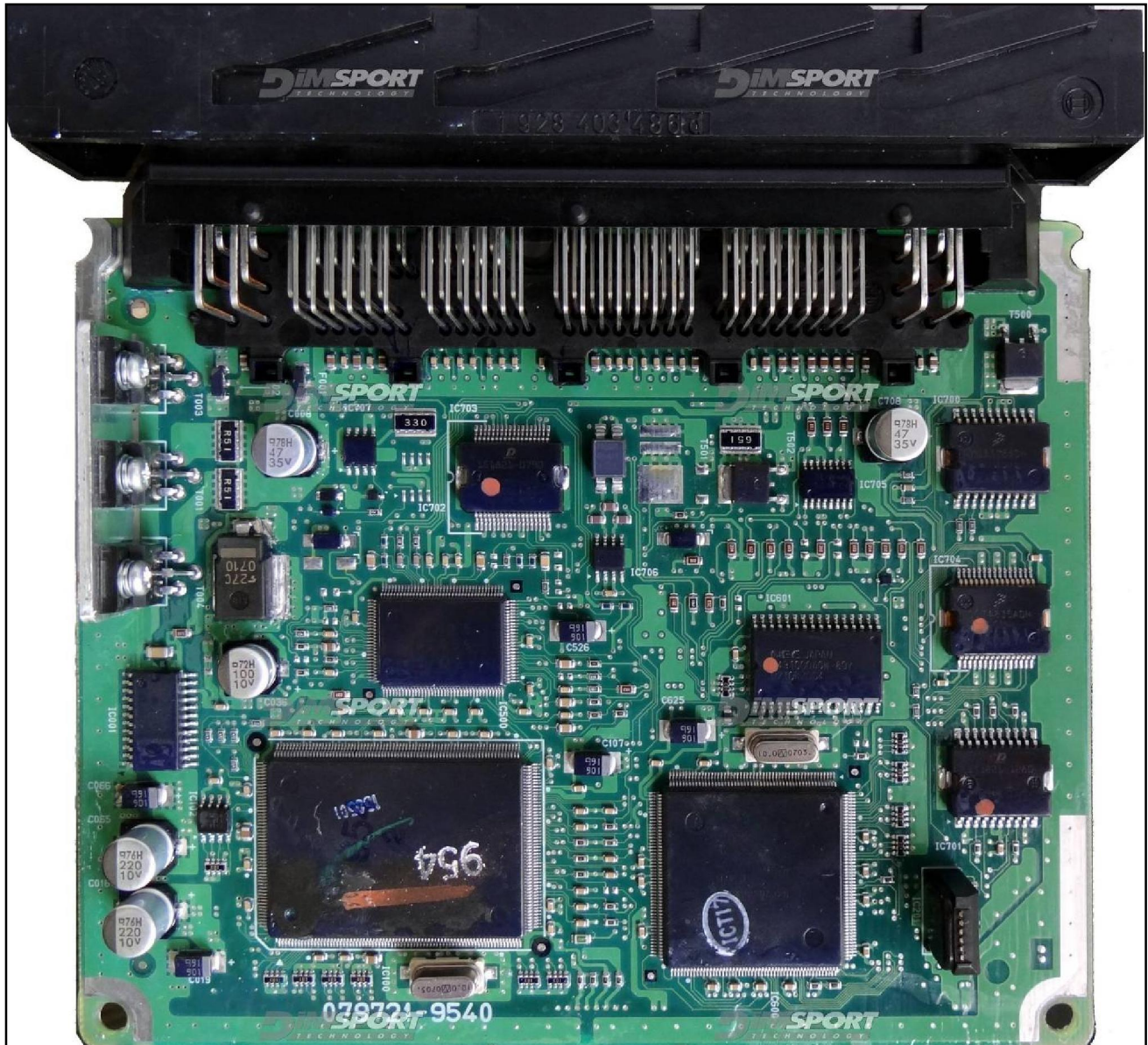
Power the ECU with the F32GN037C wiring. Use the DIMA adapter F34DM017.



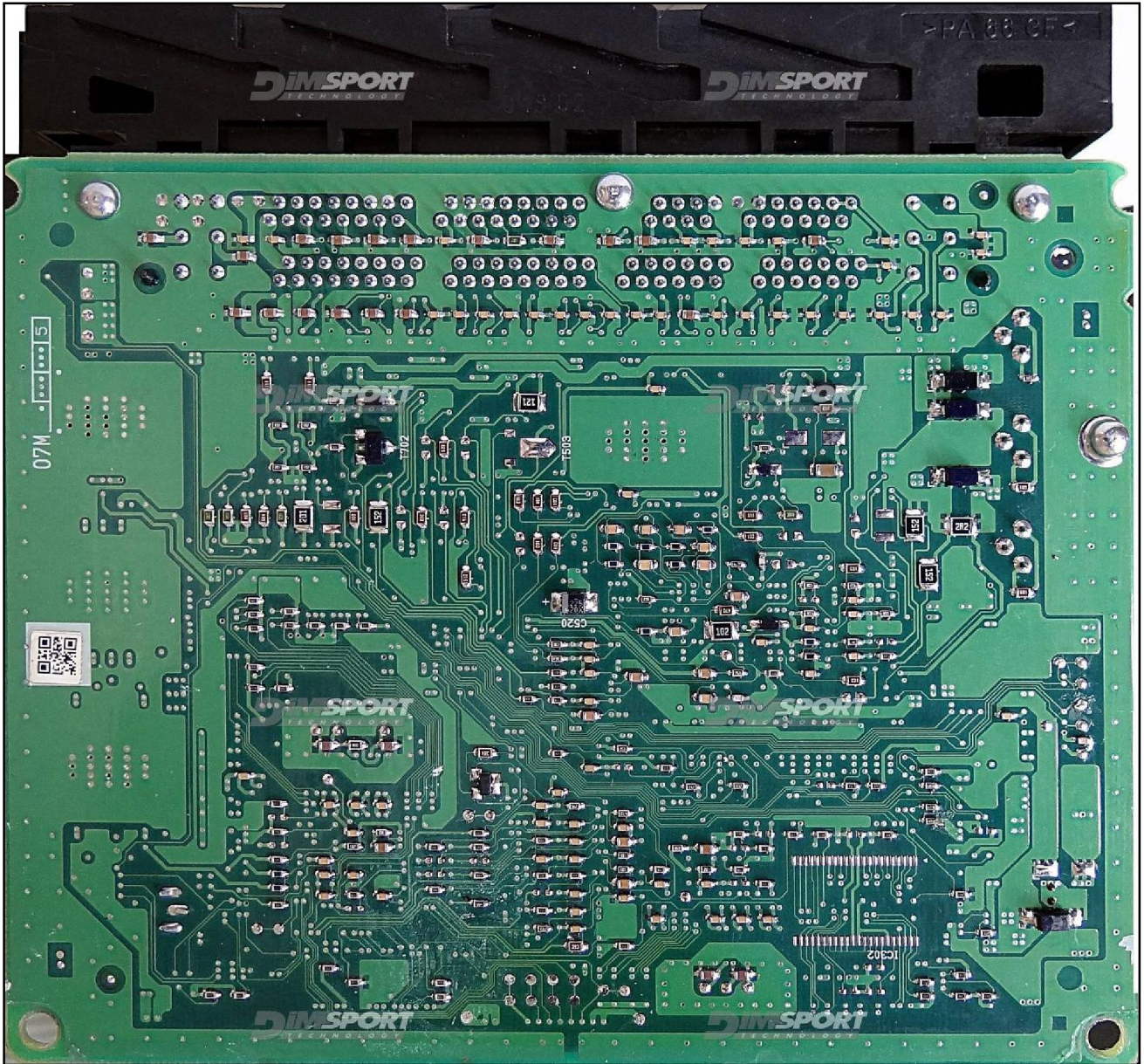
DENSO SH7058 VOLVO

ECU TYPE 002

On this ECU it is possible ONLY the DIRECT CONNECTION, the DIMA connection it is NOT possible.



DENSO SH7058 VOLVO

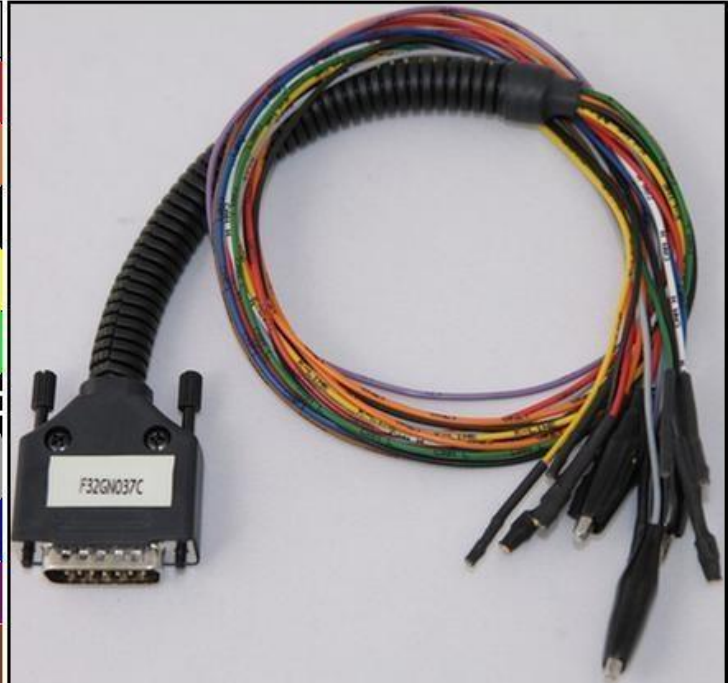


DENSO SH7058 VOLVO

DIRECT CONNECTION

In order to connect to the ECU use the CABLE F32GN037C.
Make sure that the POWER led (red) on Trasdata is ON.

COLORE FILO WIRE COLOUR	DESCRIZIONE DESCRIPTION
ROSSO RED	POSITIVO DIRETTO POWER BATTERY
ARANCIO ORANGE	POSITIVO SOTTO QUADRO POWER SWITCH ON
NERO BLACK	MASSA GND
GIALLO YELLOW	KLINE
VERDE GREEN	CAN LOW
BIANCO WHITE	CAN HIGH
GRIGIO GREY	POL4 BOOT
BLU BLUE	POL5 CNF1
VIOLA/GRIGIO PURPLE/GREY	TENSIONE PROG. PROG. VOLTAGE
MARRONE BROWN	RESET



ECU CONNECTOR



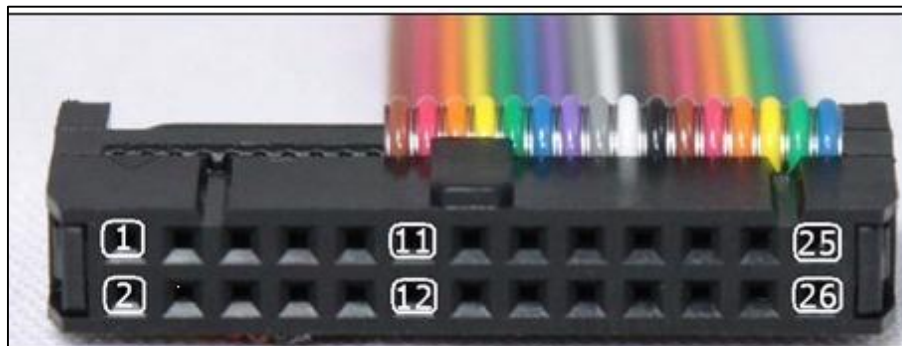
WARNING :

on this ECU you must use two different flat cables: one is for the READING procedure and one is for the WRITING procedure.

DENSO SH7058 VOLVO

DIRECT CONNECTION – ECU READING:

For the READING procedure use the FLAT cable F34NTF53



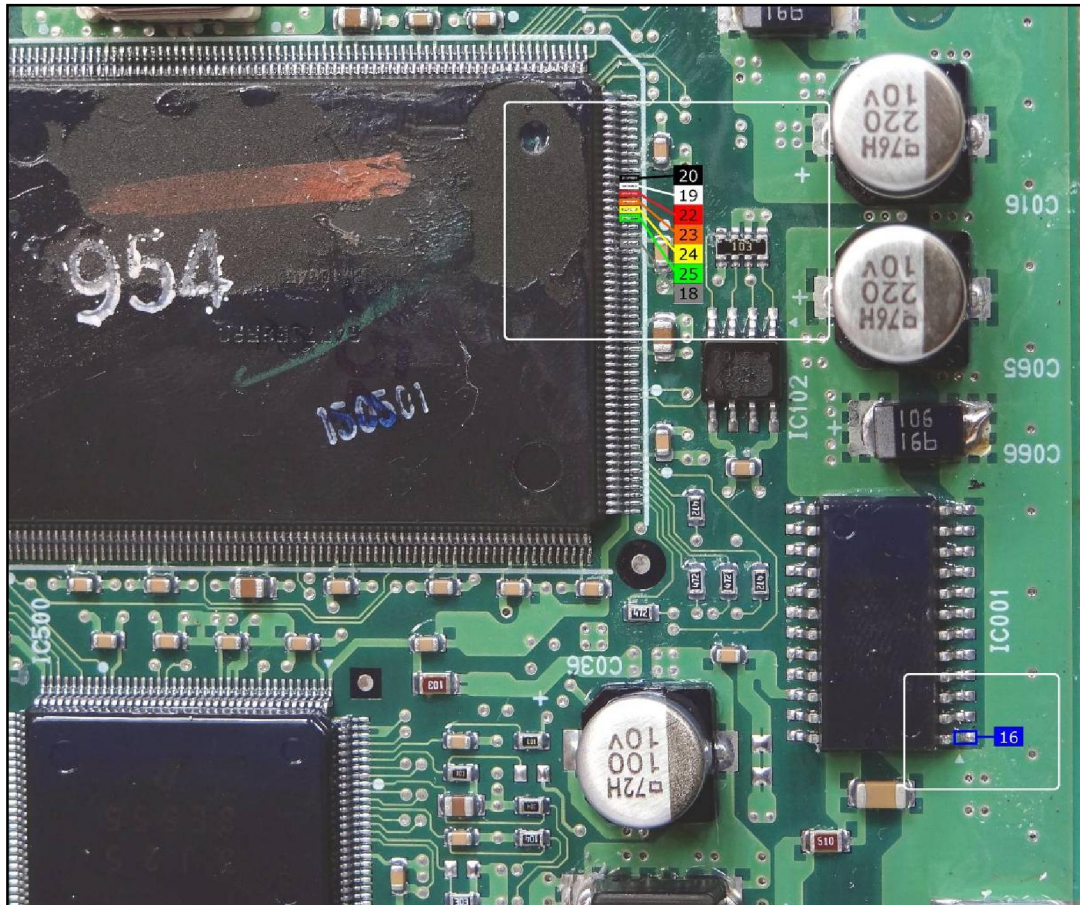
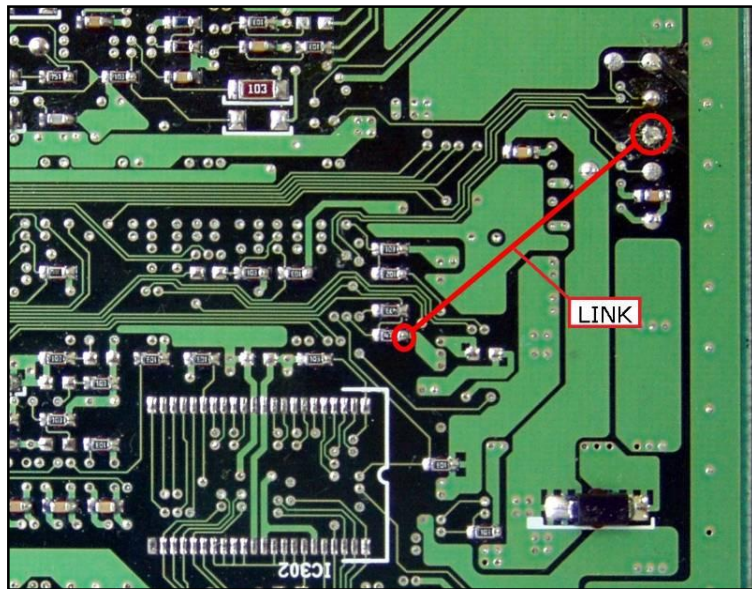
Pin	Colore Colour
11	Non usato Not used
12	Non usato Not used
13	Non usato Not used
14	Non usato Not used
15	Non usato Not used
16	Blu Blue
17	Non usato Not used
18	Grigio Grey
19	Bianco White
20	Nero Black
21	Non usato Not used
22	Rosso Red
23	Arancio Orange
24	Giallo Yellow
25	Verde Green
26	Non usato Not used



DENSO SH7058 VOLVO

For a correct soldering procedure clean very well the soldering lay-by pins from the plastic film. We suggest you to use a fine grit glass-paper smoothing by gentle pressure the lay by pins connection.

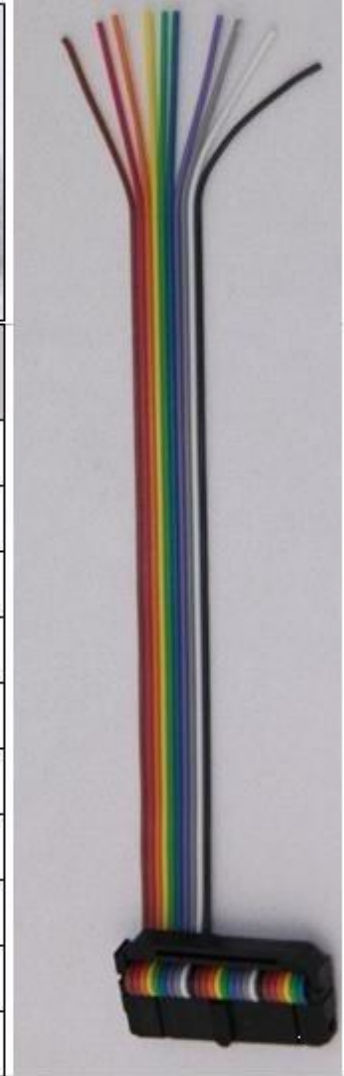
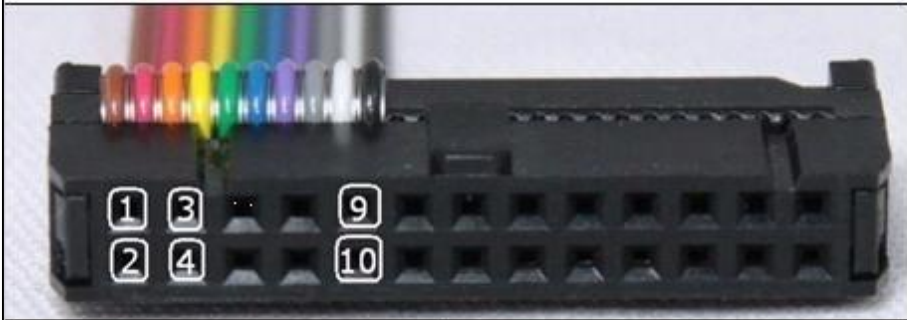
In order to read it is necessary to link the 2 pads (make a little bridge) on the bottom side as shown in the picture here below. At the end of the correct reading remove the bridge.



DENSO SH7058 VOLVO

DIRECT CONNECTION – ECU WRITING:

For the WRITING procedure use the FLAT cable F34NTF51



Pin	Colore Colour
1	Marrone Brown
2	Non usato Not used
3	Non usato Not used
4	Non usato Not used
5	Verde Green
6	Blu Blue
7	Viola Violet
8	Grigio Grey
9	Non usato Not used
10	Nero Black

For a correct soldering procedure clean very well the soldering lay-by pins from the plastic film. We suggest you to use a fine grit glass-paper smoothing by gentle pressure the lay by pins connection.

To perform the writing procedure it is necessary to connect the black wire of the FLAT cable on the top side of the ECU (as shown in the picture). The other wires must be soldered on the bottom side of the ECU.

DENSO SH7058 VOLVO

