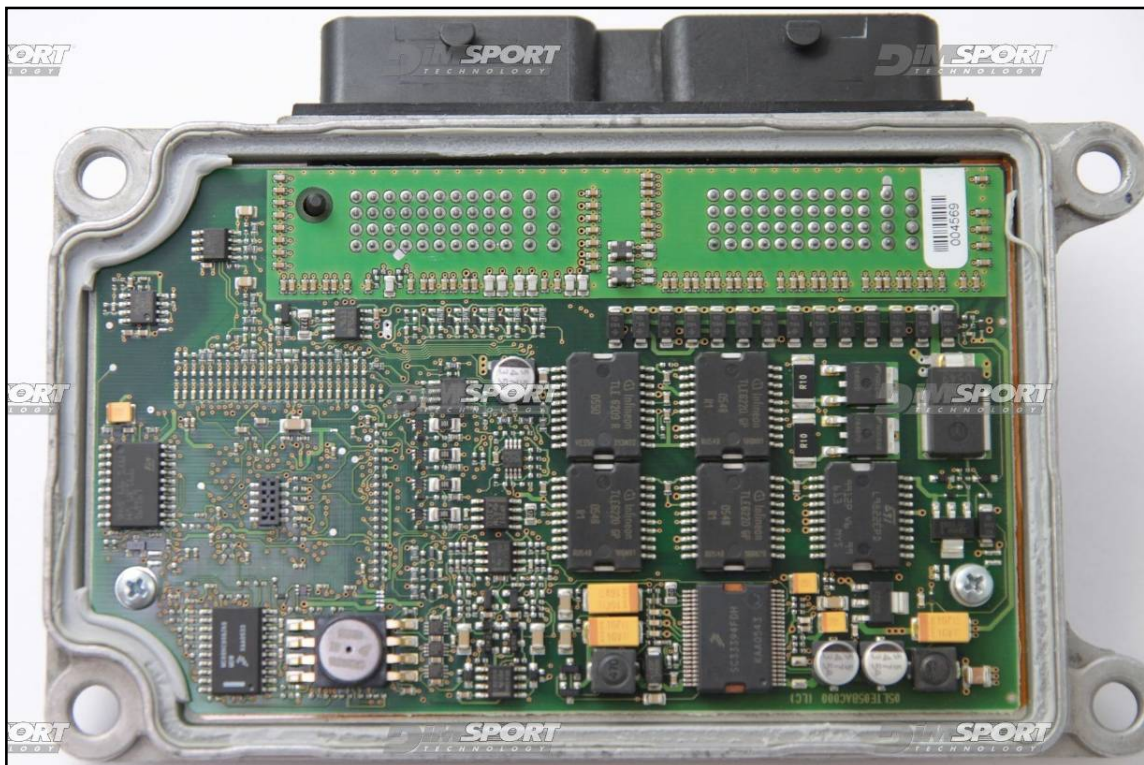


EFI T4E MPC563 LOTUS

plugin 437

The communication pads are located in the lower part of the ECU. It is possible ONLY the DIRECT CONNECTION by using the cable F34NTF51.

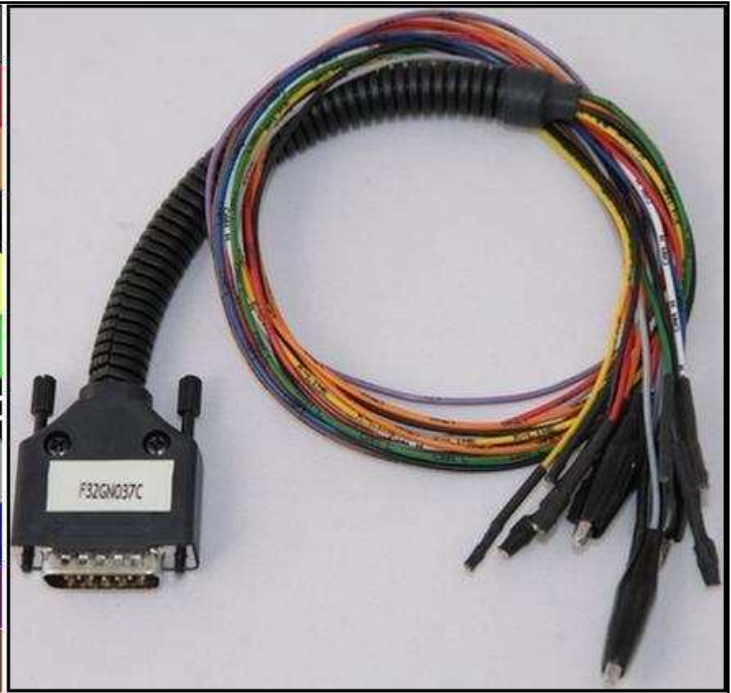


EFI T4E MPC563 LOTUS

ECU CONNECTOR

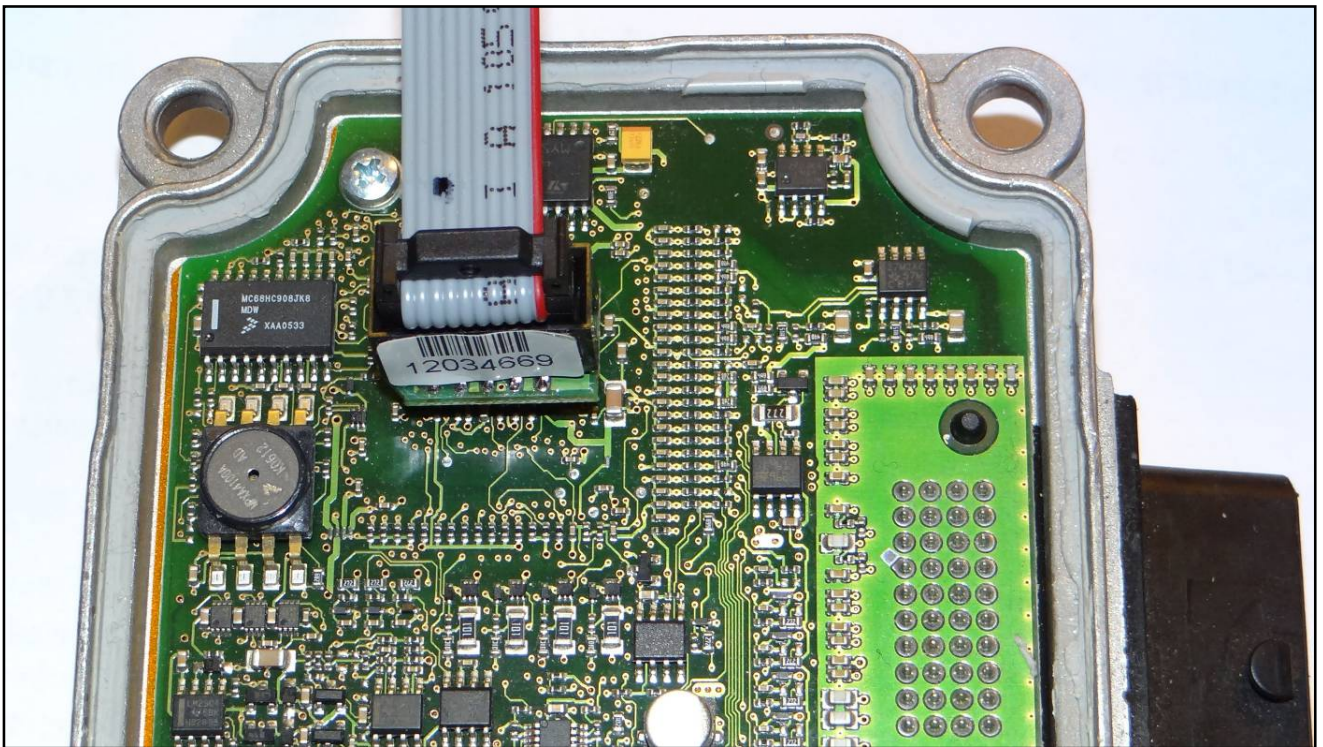
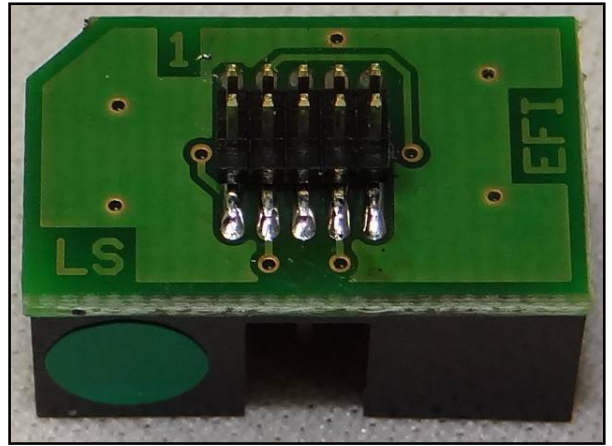
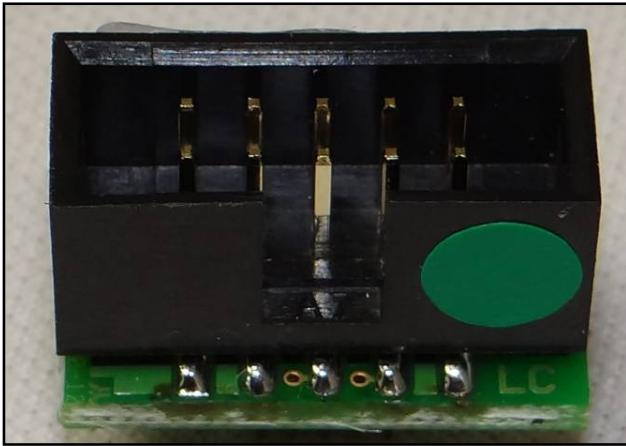
In order to connect to the ECU use the CABLE F32GN037C.
Make sure that the POWER led (red) on Trasdata is ON.

COLORE FILO WIRE COLOUR	DESCRIZIONE DESCRIPTION
ROSSO RED	POSITIVO DIRETTO POWER BATTERY
ARANCIO ORANGE	POSITIVO SOTTO QUADRO POWER SWITCH ON
NERO BLACK	MASSA GND
GIALLO YELLOW	KLINE
VERDE GREEN	CAN LOW
BIANCO WHITE	CAN HIGH
GRIGIO GREY	POL4 BOOT
BLU BLUE	POL5 CNF1
VIOLA/GRIGIO PURPLE/GREY	TENSIONE PROG. PROG. VOLTAGE
MARRONE BROWN	RESET



EFI T4E MPC563 LOTUS

DIRECT CONNECTION WITH F34NTA12 ADAPTER



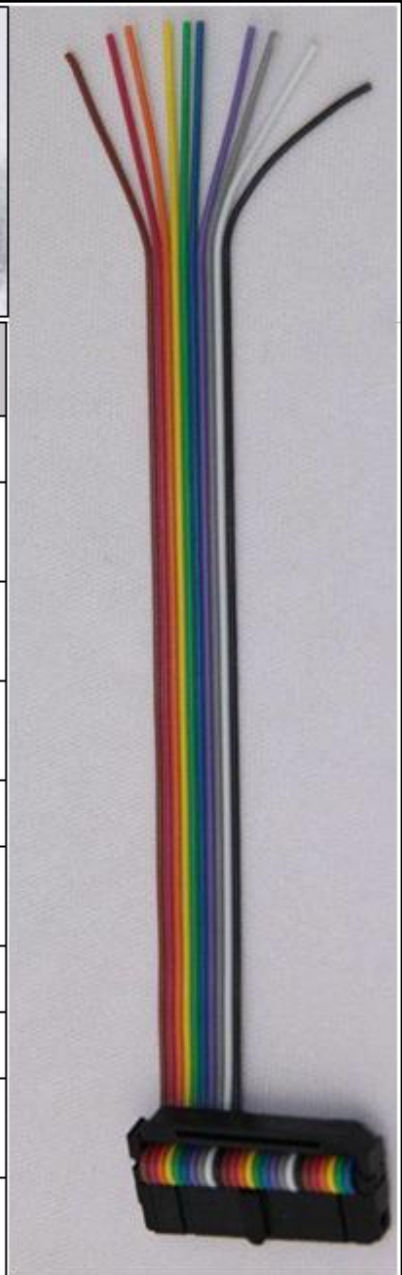
EFI T4E MPC563 LOTUS

FREE WIRINGS BDM CONNECTION

Connect the wiring F34NTF51 as described here below:



Pin	Colore Colour
1	Marrone Brown
2	Non usato Not used
3	Non usato Not used
4	Non usato Not used
5	Verde Green
6	Non usato Not used
7	Viola Violet
8	Grigio Grey
9	Non usato Not used
10	Non usato Not used



EFI T4E MPC563 LOTUS

