

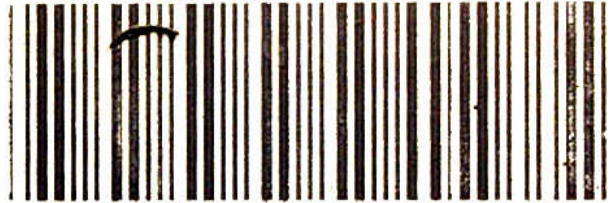
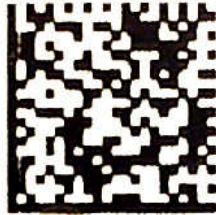
HITACHI SH7054 MEC37-XXX NISSAN

PLUGIN 650

MEC37-580

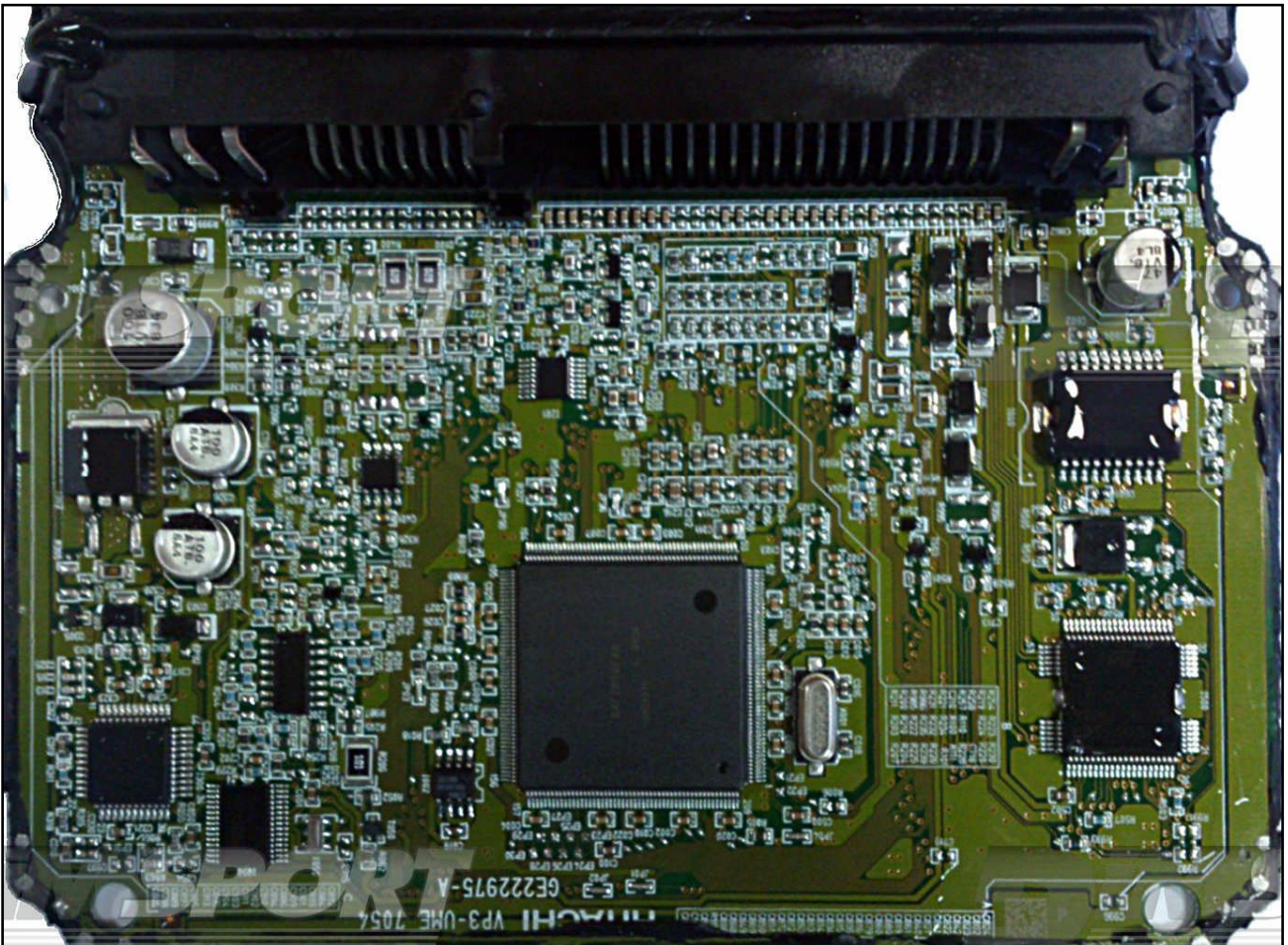
NISSAN

J M

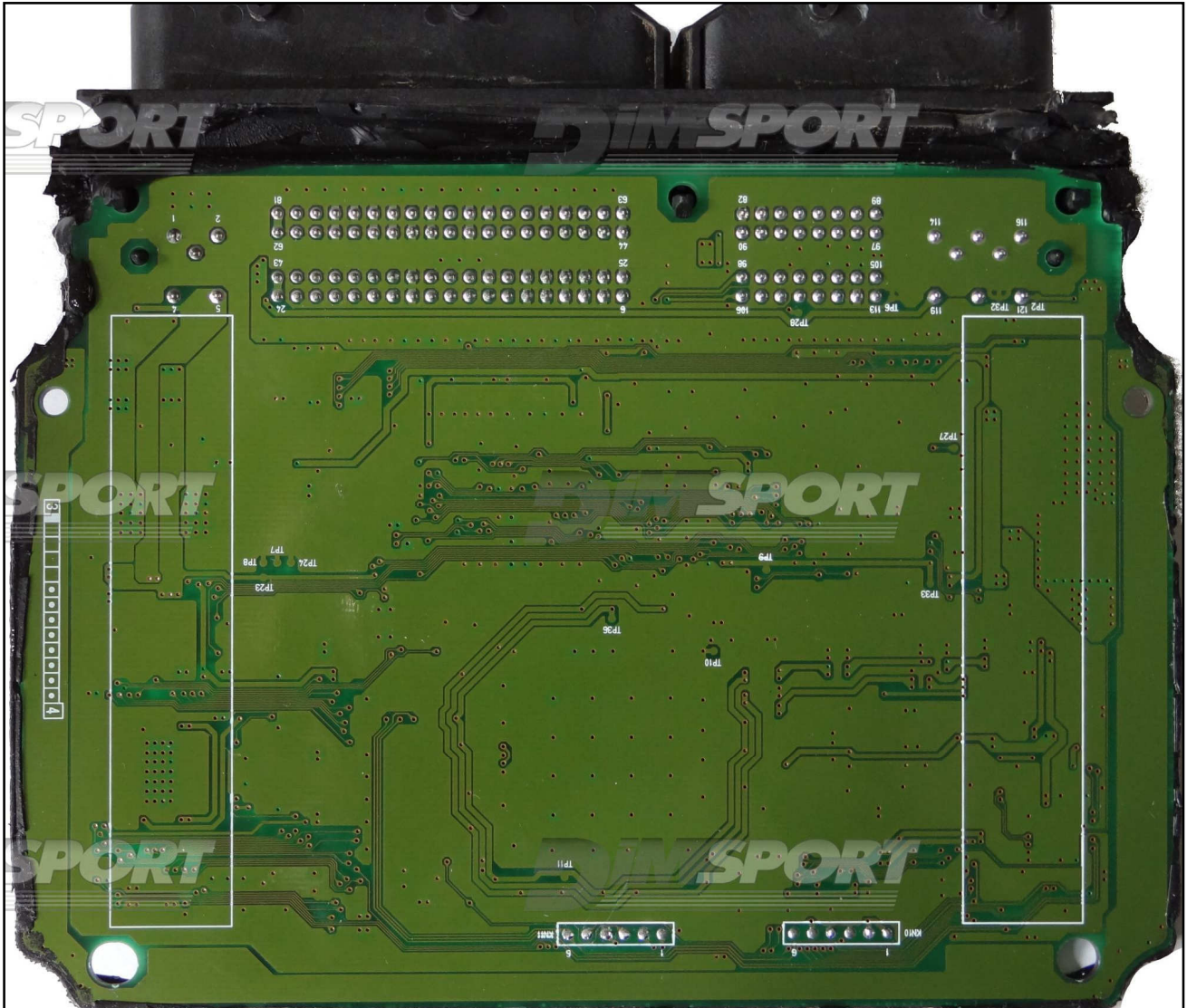


MEC37-580 A1 8922

Hitachi Automotive Systems  
Europe Ltd (UK)



HITACHI SH7054 MEC37-XXX NISSAN

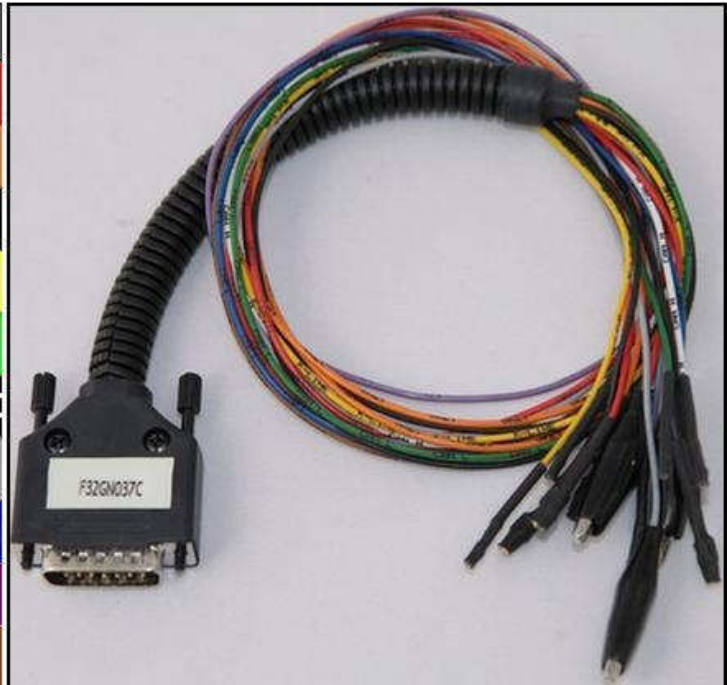


## HITACHI SH7054 MEC37-XXX NISSAN

### DIRECT CONNECTION

In order to connect to the ECU use the CABLE F32GN037C.  
Make sure that the POWER led (red) on Trasdata is ON.

COLORE FILO WIRE COLOUR	DESCRIZIONE DESCRIPTION
ROSSO RED	POSITIVO DIRETTO POWER BATTERY
ARANCIO ORANGE	POSITIVO SOTTO QUADRO POWER SWITCH ON
NERO BLACK	MASSA GND
GIALLO YELLOW	KLINE
VERDE GREEN	CAN LOW
BIANCO WHITE	CAN HIGH
GRIGIO GREY	POL4 BOOT
BLU BLUE	POL5 CNF1
VIOLA/GRIGIO PURPLE/GREY	TENSIONE PROG. PROG. VOLTAGE
MARRONE BROWN	RESET



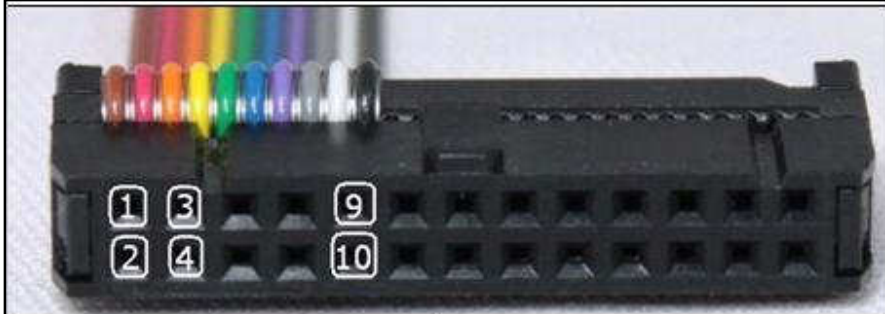
### ECU CONNECTOR



## HITACHI SH7054 MEC37-XXX NISSAN

### ECU READING & WRITING DIRECT CONNECTION:

For the READING and WRITING procedure use the FLAT cable F34NTF51



Pin	Colore Colour
1	Marrone Brown
2	Non usato Not used
3	Non usato Not used
4	Giallo Yellow
5	Verde Green
6	Blu Blue
7	Viola Violet
8	Grigio Grey
9	Bianco White
10	Nero Black



## HITACHI SH7054 MEC37-XXX NISSAN

For a correct soldering procedure clean very well the soldering lay by pins from the plastic film. We suggest you to use a fine grit glass paper smoothing by gentle pressure the connection of the lay by pins.

