

HITACHI SH7055 MEC23xxx NISSAN

plugin **494**

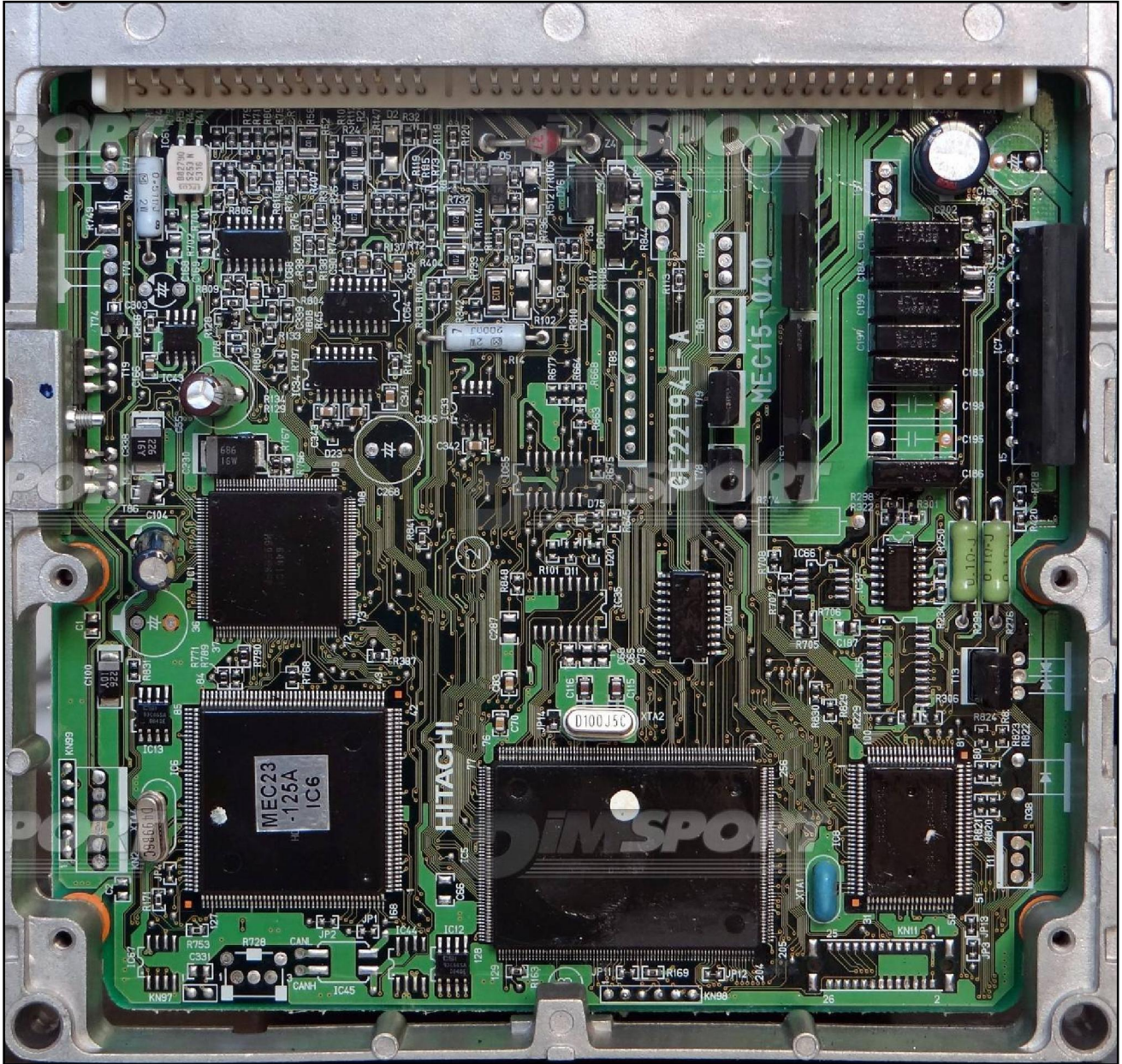
Warning: there are 2 ECU types
TYPE 01 MANUAL TRASMISSION
TYPE 02 AUTOMATIC TRASMISSION

TYPE 01



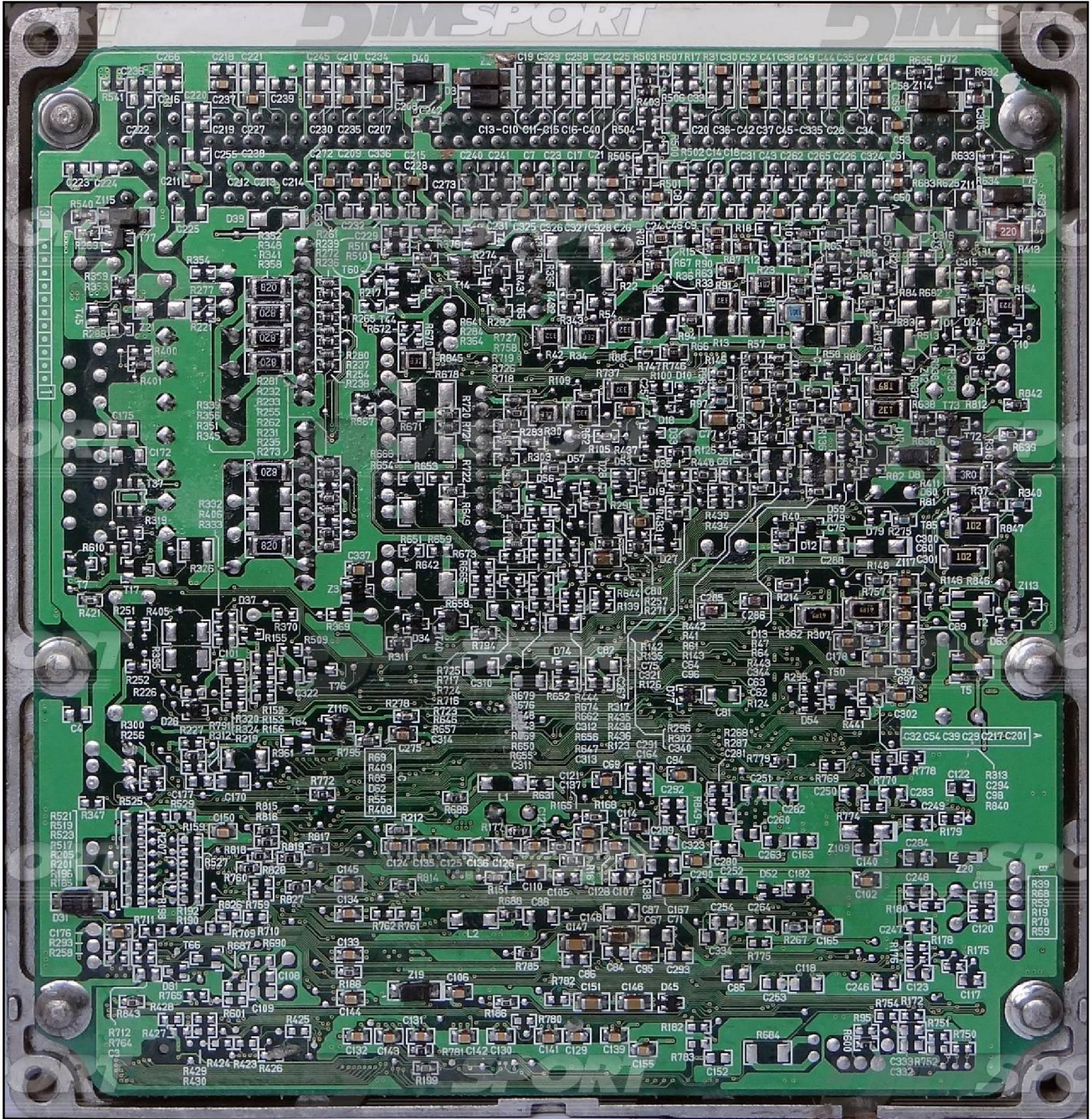
HITACHI SH7055 MEC23xxx NISSAN

TYPE 02



HITACHI SH7055 MEC23xxx NISSAN

TYPE 01 & TYPE 02

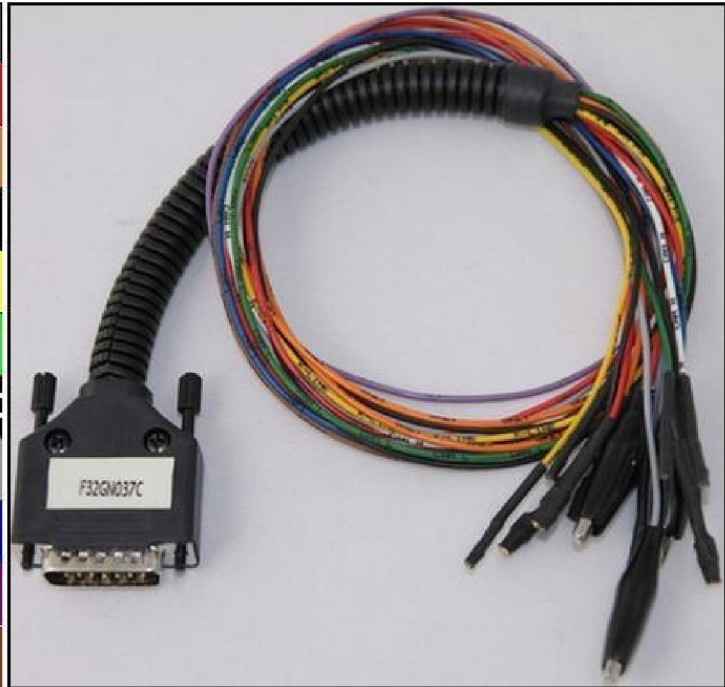


HITACHI SH7055 MEC23xxx NISSAN

DIRECT CONNECTION TYPE 01

In order to connect to the ECU use the CABLE F32GN037C.
Make sure that the POWER led (red) on Trasdata is ON.

COLORE FILO WIRE COLOUR	DESCRIZIONE DESCRIPTION
ROSSO RED	POSITIVO DIRETTO POWER BATTERY
ARANCIO ORANGE	POSITIVO SOTTO QUADRO POWER SWITCH ON
NERO BLACK	MASSA GND
GIALLO YELLOW	KLINE
VERDE GREEN	CAN LOW
BIANCO WHITE	CAN HIGH
GRIGIO GREY	POL4 BOOT
BLU BLUE	POL5 CNF1
VIOLA/GRIGIO PURPLE/GREY	TENSIONE PROG. PROG. VOLTAGE
MARRONE BROWN	RESET



ECU CONNECTOR TYPE 01



ATTENZIONE:

on this ECU you must use two different flat cables: one is for the READING procedure and one is for the WRITING procedure.

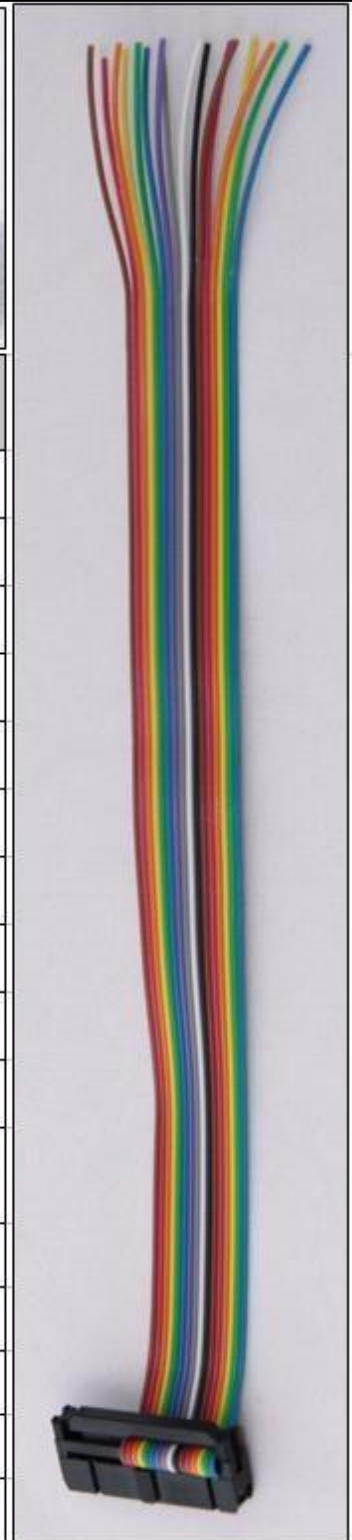
HITACHI SH7055 MEC23xxx NISSAN

DIRECT CONNECTION – ECU READING TYPE 01:

For the READING procedure use the FLAT cable F34NTF53

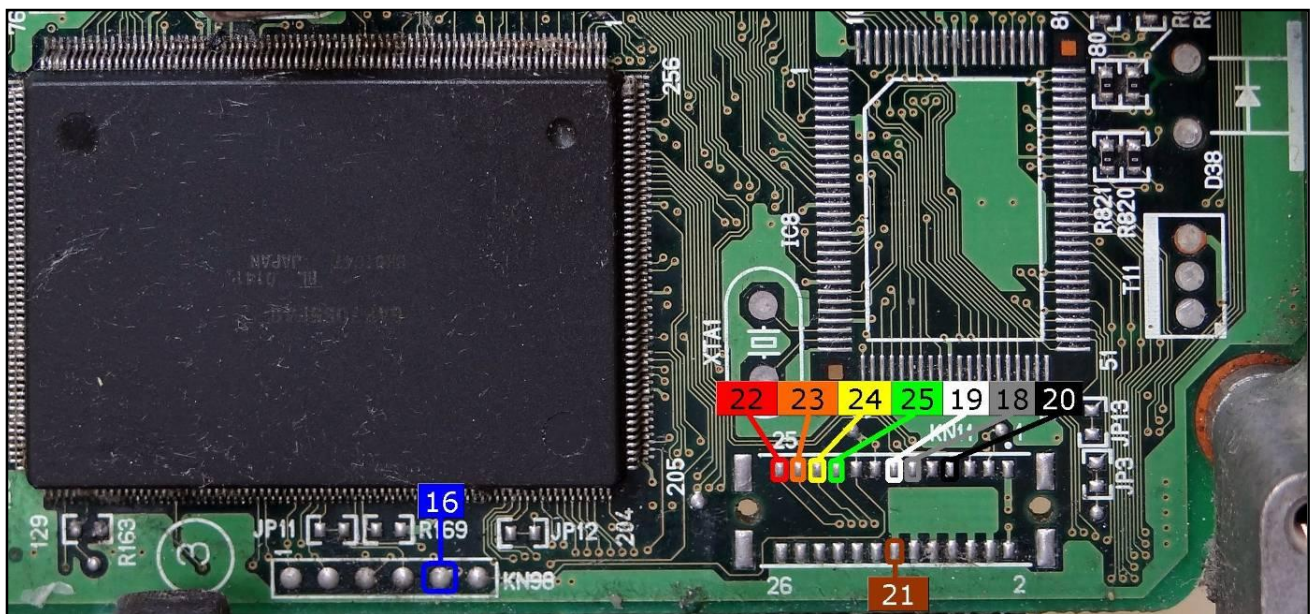
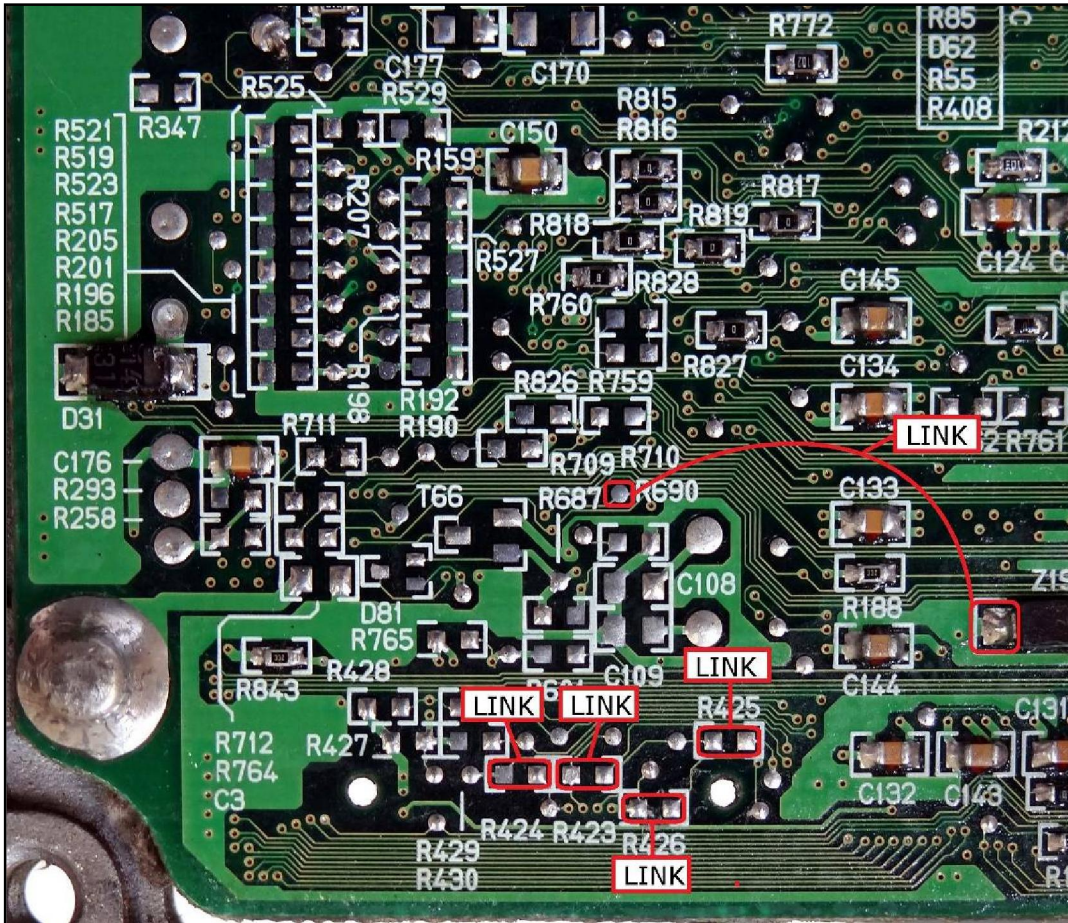


Pin	Colore Colour
11	Non usato Not used
12	Non usato Not used
13	Non usato Not used
14	Non usato Not used
15	Non usato Not used
16	Blu Blue
17	Non usato Not used
18	Grigio Grey
19	Bianco White
20	Nero Black
21	Marrone Brown
22	Rosso Red
23	Arancio Orange
24	Giallo Yellow
25	Verde Green
26	Non usato Not used



HITACHI SH7055 MEC23xxx NISSAN

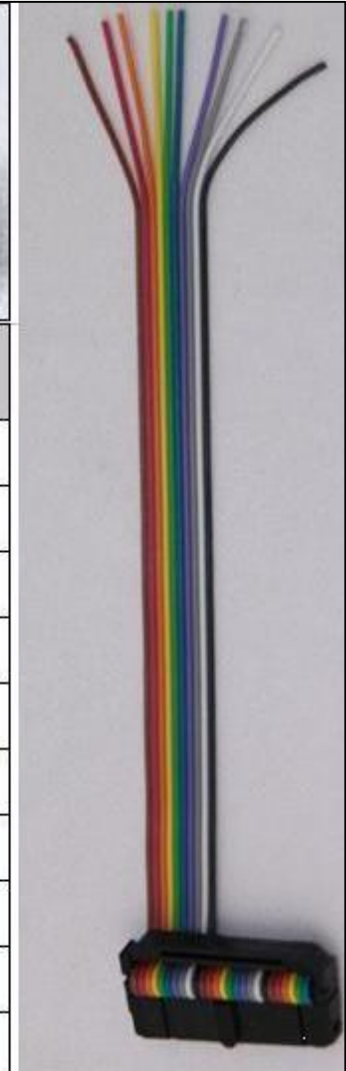
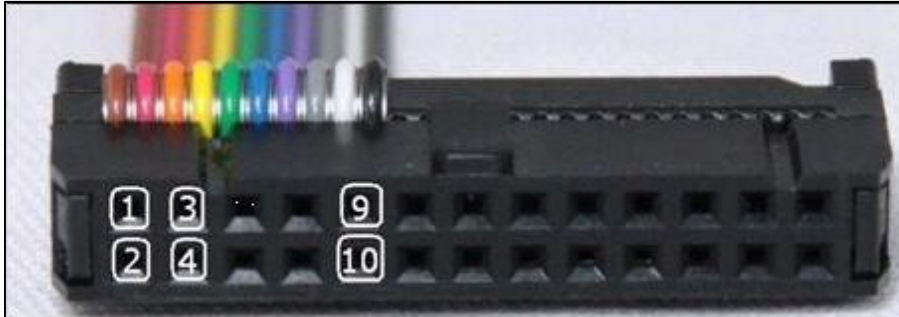
For a correct soldering procedure clean very well the soldering lay-by pins from the plastic film. We suggest you to use a fine grit glass-paper smoothing by gentle pressure the connection of the lay by pins. For the reading procedure it is necessary to perform all the LINK shown in the picture here below. At the end of the reading procedure remove all the LINK.



HITACHI SH7055 MEC23xxx NISSAN

DIRECT CONNECTION – ECU WRITING TYPE 01:

For the WRITING procedure use the FLAT cable F34NTF51

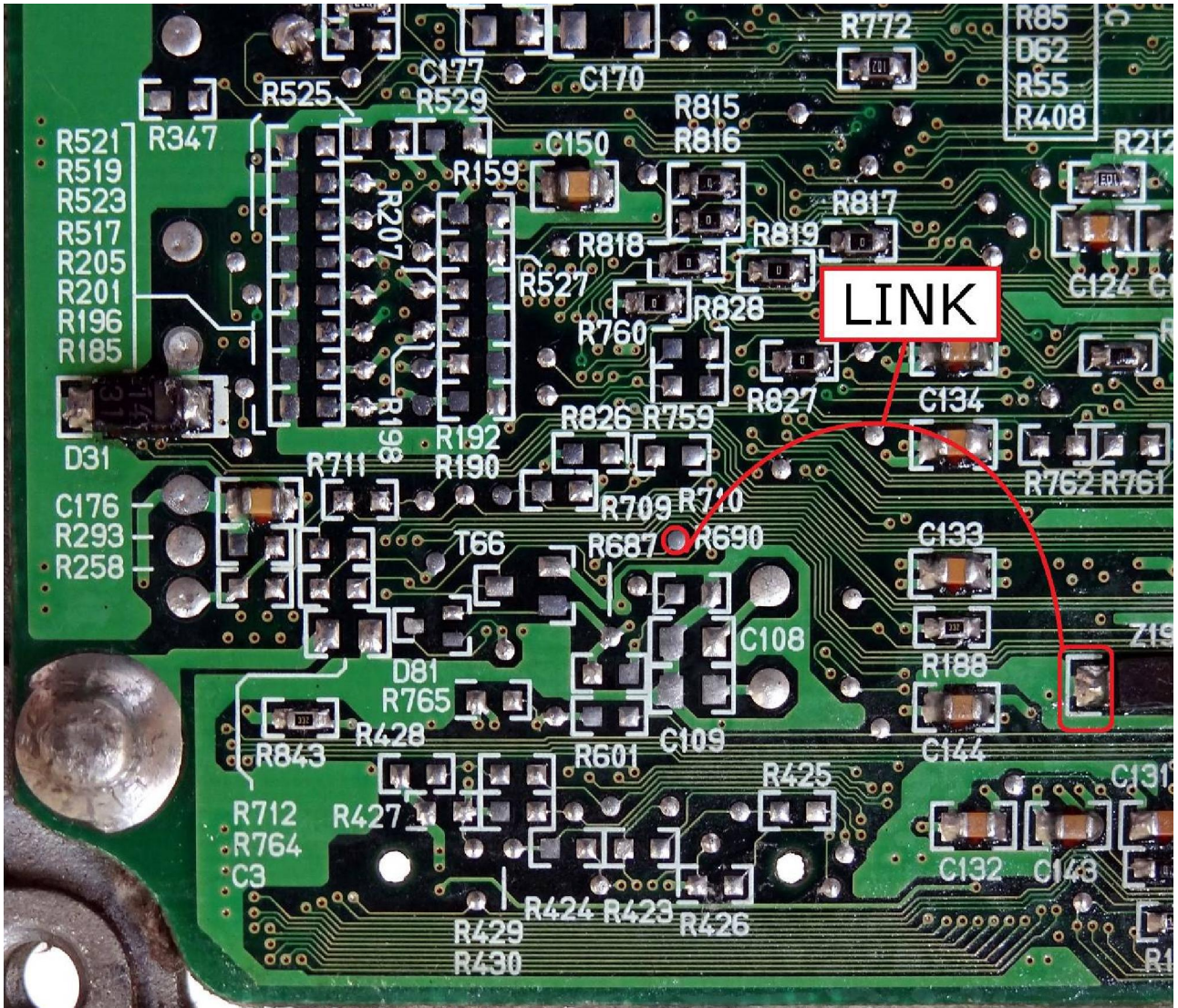


Pin	Colore Colour
1	Marrone Brown
2	Non usato Not used
3	Non usato Not used
4	Non usato Not used
5	Non usato Not used
6	Blu Blue
7	Viola Violet
8	Grigio Grey
9	Non usato Not used
10	Nero Black

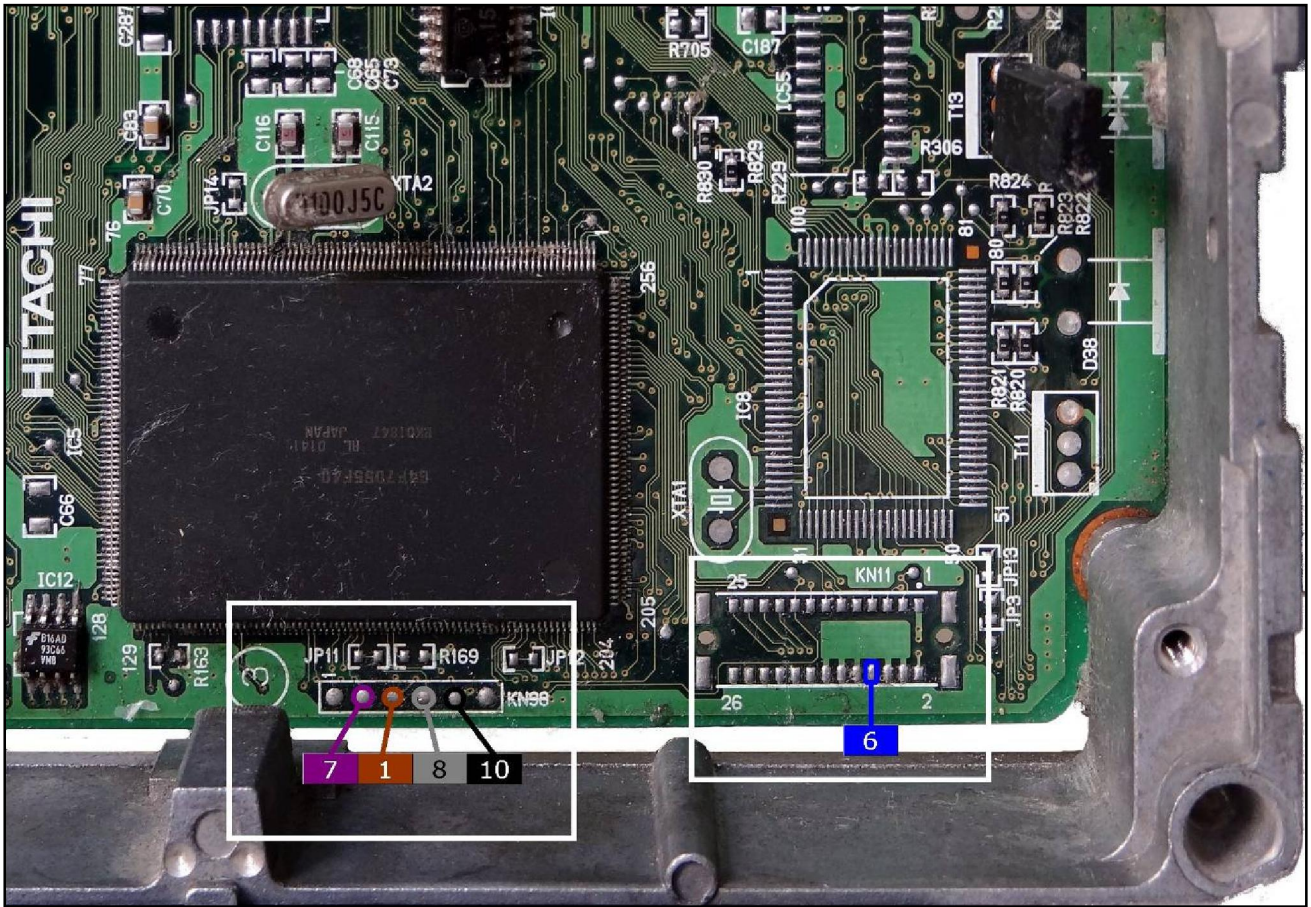
HITACHI SH7055 MEC23xxx NISSAN

For a correct soldering procedure clean very well the soldering lay-by pins from the plastic film. We suggest you to use a fine grit glass-paper smoothing by gentle pressure the connection of the lay by pins.

For the reading procedure it is necessary to perform the LINK shown in the picture here below. At the end of the reading procedure remove the LINK.



HITACHI SH7055 MEC23xxx NISSAN

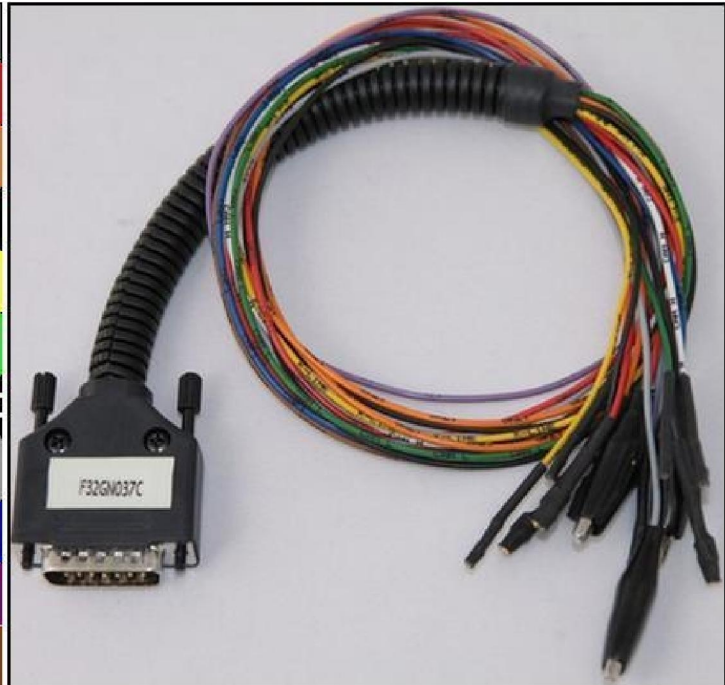


HITACHI SH7055 MEC23xxx NISSAN

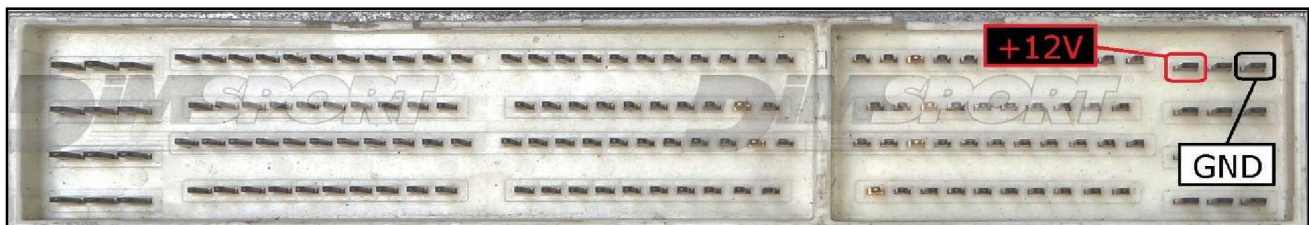
DIRECT CONNECTION ECU TYPE 02

In order to connect to the ECU use the CABLE F32GN037C.
Make sure that the POWER led (red) on Trasdata is ON.

COLORE FILO WIRE COLOUR	DESCRIZIONE DESCRIPTION
ROSSO RED	POSITIVO DIRETTO POWER BATTERY
ARANCIO ORANGE	POSITIVO SOTTO QUADRO POWER SWITCH ON
NERO BLACK	MASSA GND
GIALLO YELLOW	KLINE
VERDE GREEN	CAN LOW
BIANCO WHITE	CAN HIGH
GRIGIO GREY	POL4 BOOT
BLU BLUE	POL5 CNF1
VIOLA/GRIGIO PURPLE/GREY	TENSIONE PROG. PROG. VOLTAGE
MARRONE BROWN	RESET

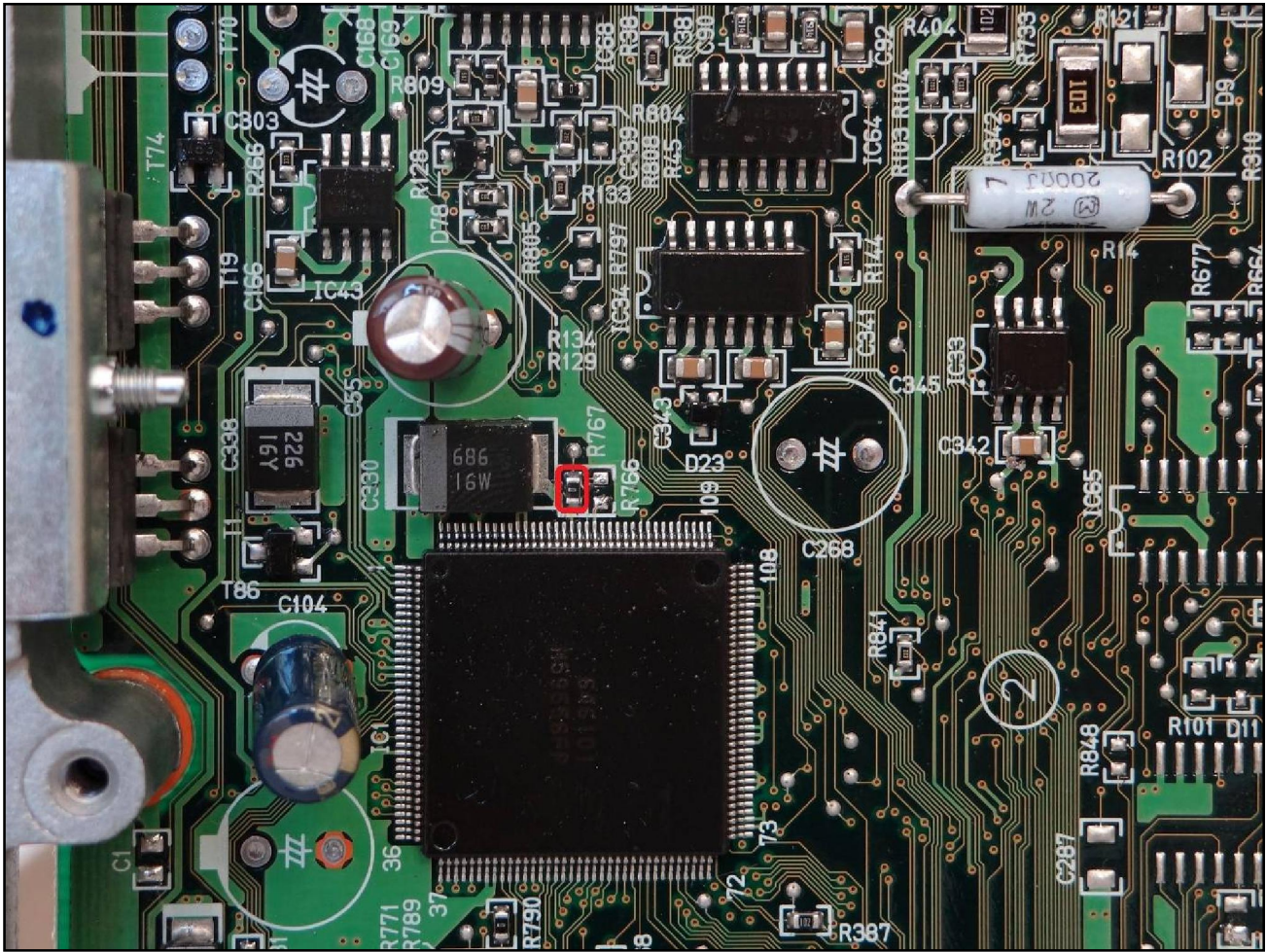


ECU CONNECTOR TYPE 02



HITACHI SH7055 MEC23xxx NISSAN

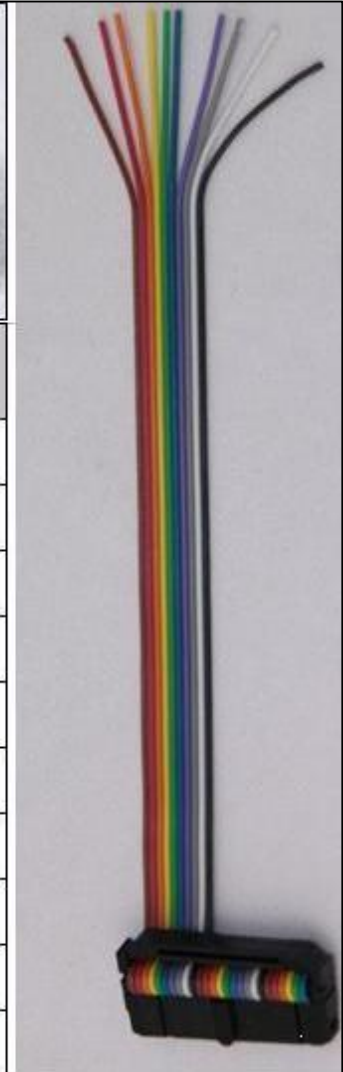
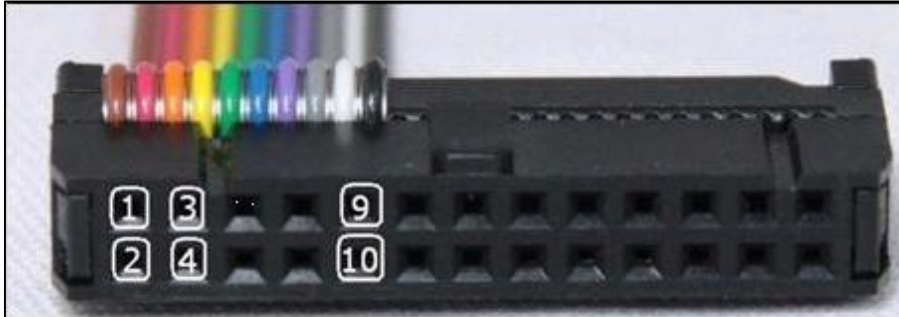
Warning: for the automatic transmission version it is necessary to move the resistor R0 shown in the picture here below. It must be desoldered from the position R767 and must be placed on the R766 position. At the end of the job, before connecting the ECU back into the car, set back the resistor R0 in its original position.



HITACHI SH7055 MEC23xxx NISSAN

DIRECT CONNECTION – ECU READING&WRITING ECU TYPE 02:

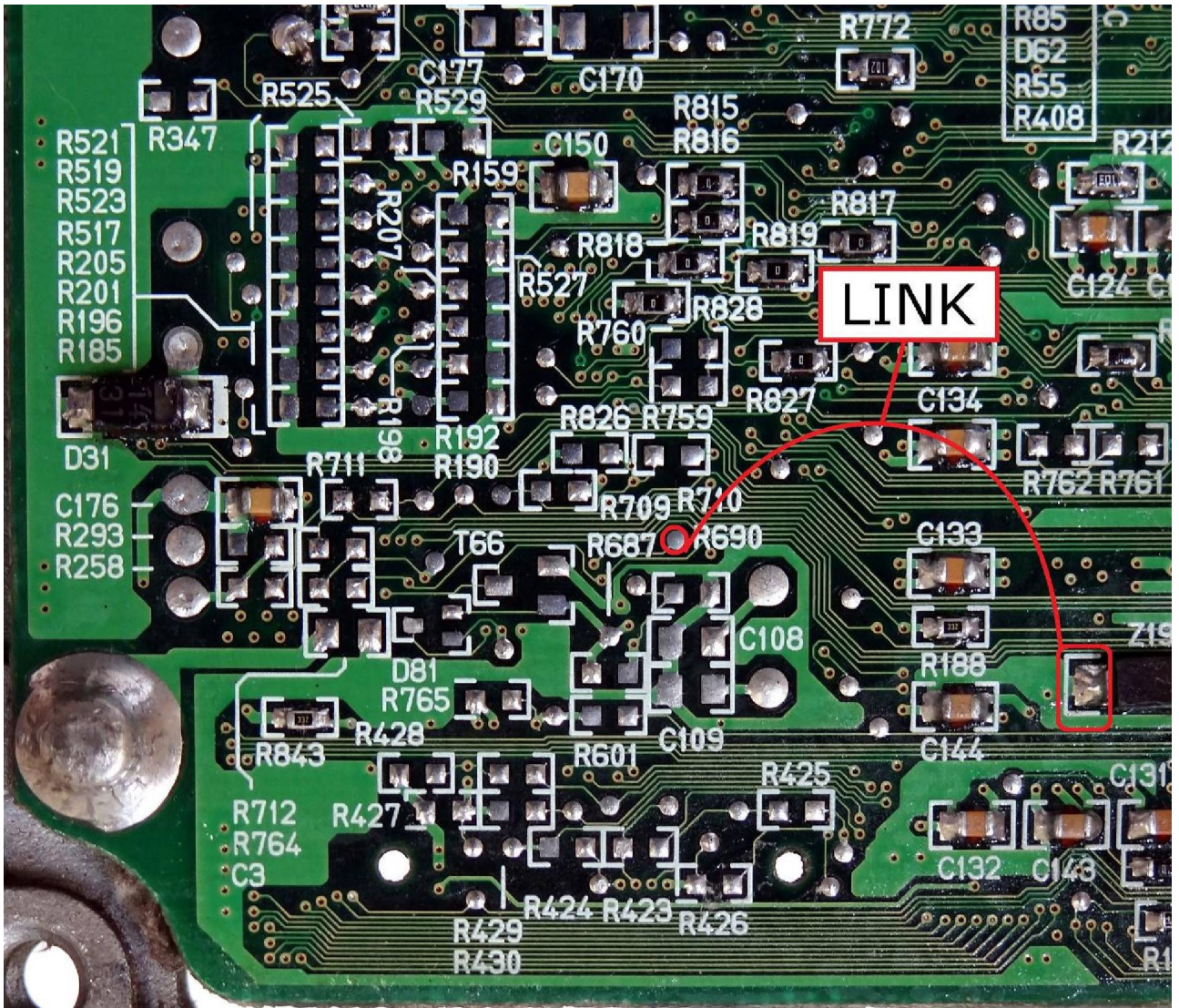
For the READING&WRITING procedure use the FLAT cable F34NTF51



Pin	Colore Colour
1	Marrone Brown
2	Non usato Not used
3	Non usato Not used
4	Non usato Not used
5	Non usato Not used
6	Blu Blue
7	Viola Violet
8	Grigio Grey
9	Non usato Not used
10	Nero Black

HITACHI SH7055 MEC23xxx NISSAN

For a correct soldering procedure clean very well the soldering lay-by pins from the plastic film. We suggest you to use a fine grit glass-paper smoothing by gentle pressure the connection of the lay by pins. For the reading procedure it is necessary to perform all the LINK shown in the picture here below. At the end of the reading procedure remove all the LINK.



HITACHI SH7055 MEC23xxx NISSAN

