

HITACHI SH7058 NEC007-xxx NISSAN

plugin 1760



HITACHI SH7058 NEC007-xxx NISSAN



HITACHI SH7058 NEC007-xxx NISSAN



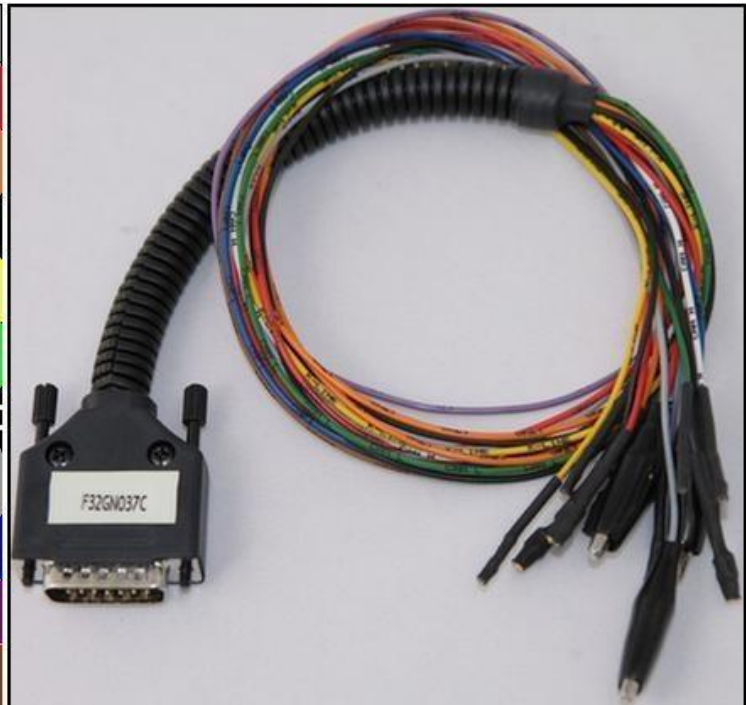
HITACHI SH7058 NEC007-xxx NISSAN

DIRECT CONNECTION

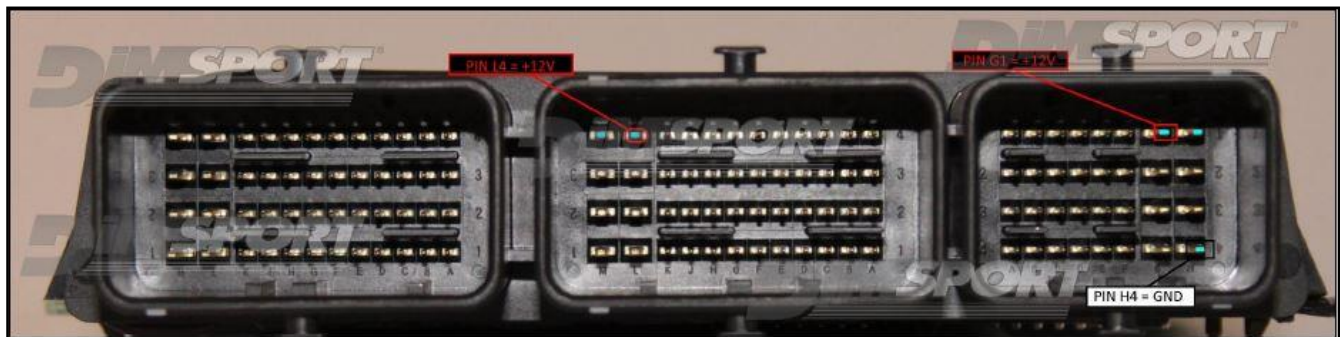
In order to connect to the ECU use the CABLE F32GN037C/D.

Make sure that the POWER led (red) on Trasdata is ON.

| COLORE FILO WIRE COLOUR | | DESCRIZIONE DESCRIPTION |
|--------------------------------|--|--|
| ROSSO RED | | POSITIVO DIRETTO POWER BATTERY |
| ARANCIO ORANGE | | POSITIVO SOTTO QUADRO POWER SWITCH ON |
| NERO BLACK | | MASSA GND |
| GIALLO YELLOW | | KLINE |
| VERDE GREEN | | CAN LOW |
| BIANCO WHITE | | CAN HIGH |
| GRIGIO GREY | | POL4 BOOT |
| BLU BLUE | | POL5 CNF1 |
| VIOLETTA/GRIGIO PURPLE/GREY | | TENSIONE PROG. PROG. VOLTAGE |
| MARRONE BROWN | | RESET |



ECU CONNECTOR



WARNING :

on this ECU you must use two different flat cables: one is for the READING procedure and one is for the WRITING procedure

HITACHI SH7058 NEC007-xxx NISSAN

DIRECT CONNECTION – ECU READING:

For the READING procedure use the FLAT cable F34NTF53

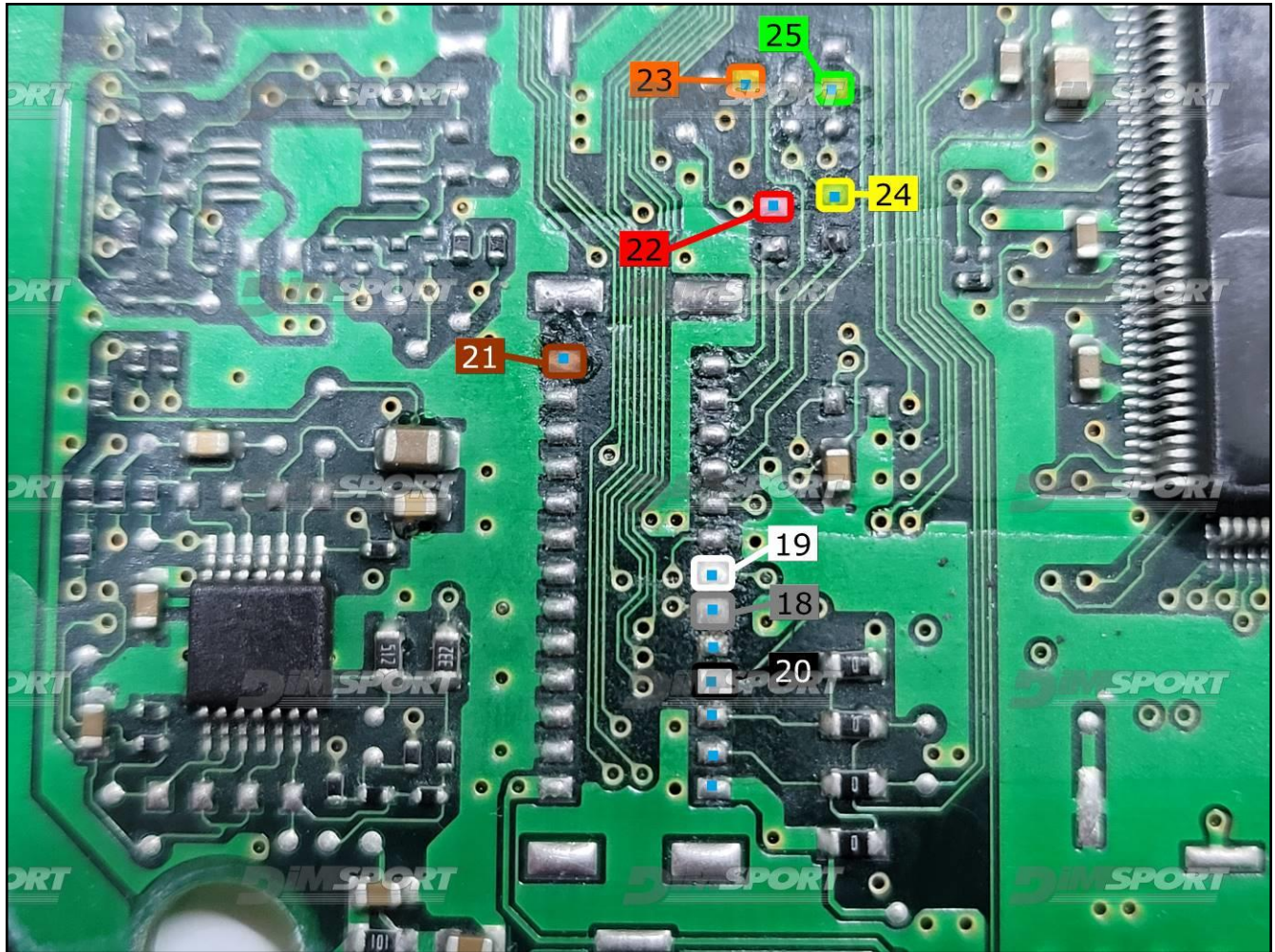


| Pin | Colore Coulor |
|-----|-----------------------|
| 11 | Non usato Not used |
| 12 | Non usato Not used |
| 13 | Non usato Not used |
| 14 | Non usato Not used |
| 15 | Non usato Not used |
| 16 | Blu Blue |
| 17 | Non usato Not used |
| 18 | Grigio Grey |
| 19 | Bianco White |
| 20 | Nero Black |
| 21 | Marrone Brown |
| 22 | Rosso Red |
| 23 | Arancio Orange |
| 24 | Giallo Yellow |
| 25 | Verde Green |
| 26 | Non usato Not used |



HITACHI SH7058 NEC007-xxx NISSAN

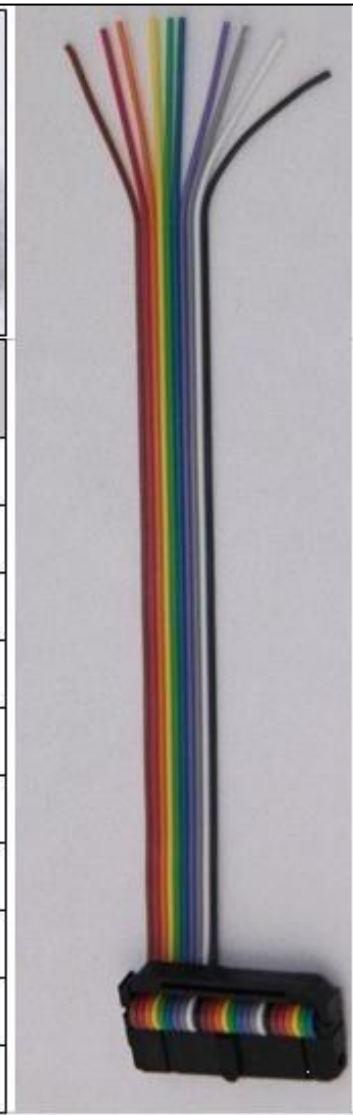
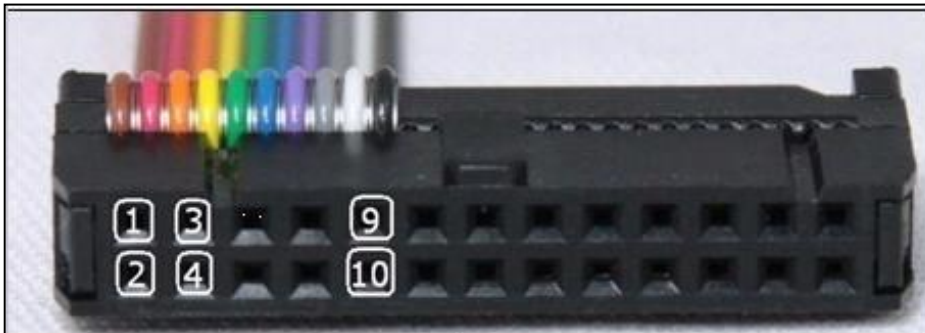
For a correct soldering procedure clean very well the soldering lay-by pins from the plastic film. We suggest you to use a fine grit glass-paper smoothing by gentle pressure the connection of the lay by pins.



HITACHI SH7058 NEC007-xxx NISSAN

DIRECT CONNECTION – ECU WRITING:

For the WRITING procedure use the FLAT cable F34NTF51



| Pin | Colore Colour |
|-----|-----------------------|
| 1 | Marrone Brown |
| 2 | Non usato Not used |
| 3 | Non usato Not used |
| 4 | Non usato Not used |
| 5 | Verde Green |
| 6 | Blu Blue |
| 7 | Viola Violet |
| 8 | Grigio Grey |
| 9 | Non usato Not used |
| 10 | Nero Black |

HITACHI SH7058 NEC007-xxx NISSAN

For a correct soldering procedure clean very well the soldering lay-by pins from the plastic film. We suggest you to use a fine grit glass-paper smoothing by gentle pressure the connection of the lay by pins.

