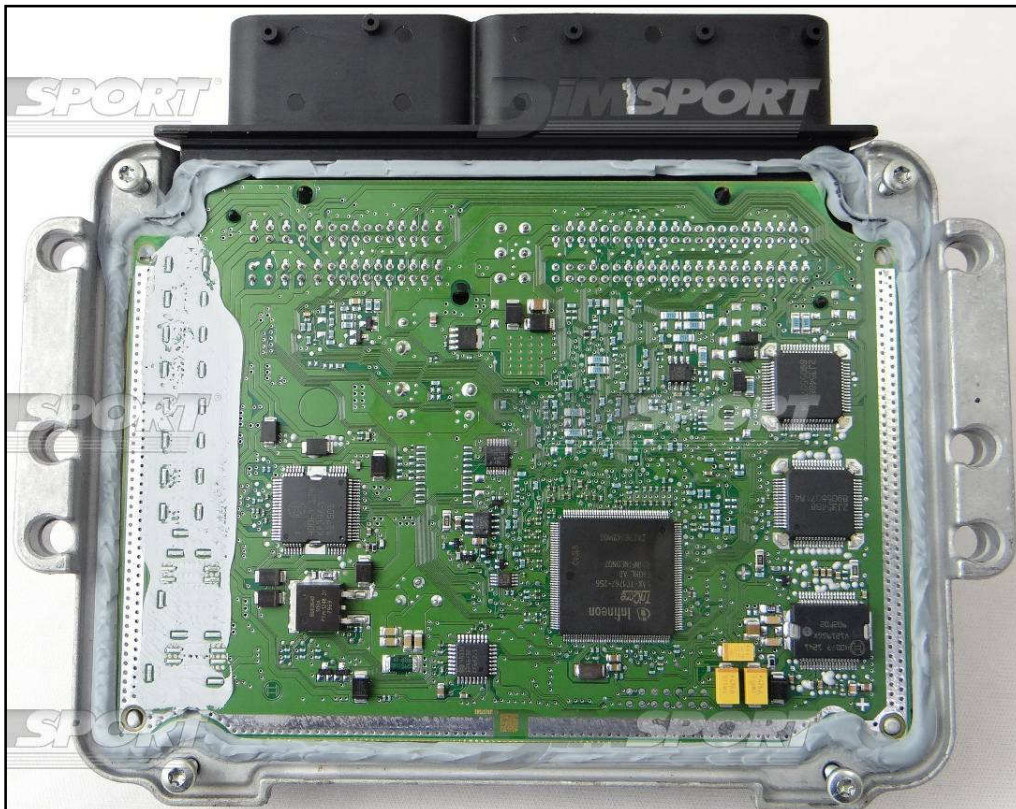


BOSCH KEFICO MED1798 MEDG1798 IROM TC1767 KIA HYUNDAI

**PLUGIN 550**

**BOSCH KEFICO MED17.9.8**

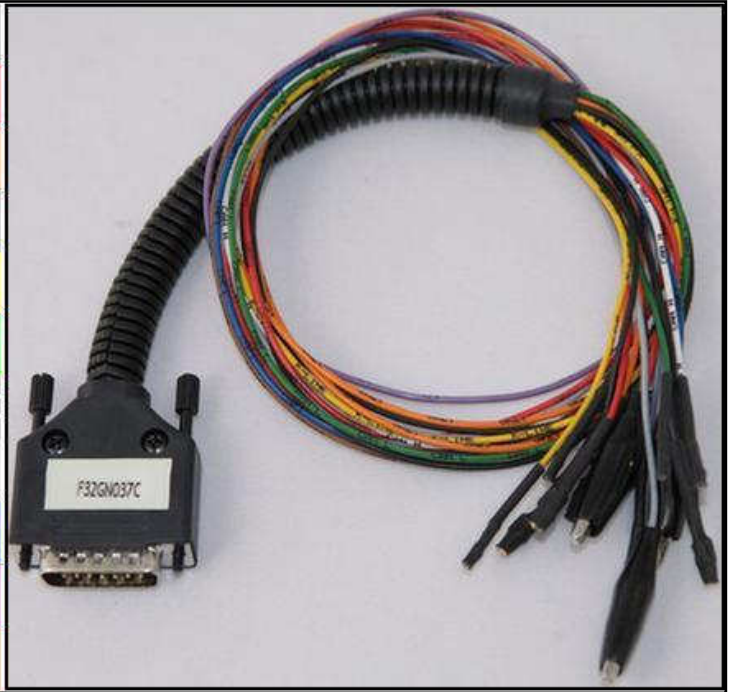


BOSCH KEFICO MED1798 MEDG1798 IROM TC1767 KIA HYUNDAI

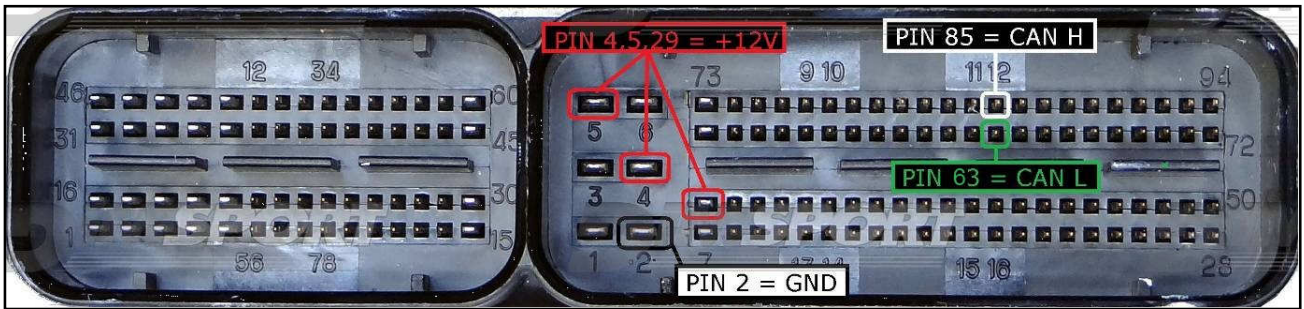
### DIRECT CONNECTION

In order to connect to the ECU use the CABLE F32GN037C.  
Make sure that the POWER led (red) on Trasdata is ON.

COLORE FILO WIRE COLOUR	DESCRIZIONE DESCRIPTION
ROSSO RED	POSITIVO DIRETTO POWER BATTERY
ARANCIO ORANGE	POSITIVO SOTTO QUADRO POWER SWITCH ON
NERO BLACK	MASSA GND
GIALLO YELLOW	KLINE
VERDE GREEN	CAN LOW
BIANCO WHYTE	CAN HIGH
GRIGIO GREY	POL4 BOOT
BLU BLUE	POL5 CNF1
VIOLA/GRIGIO PURPLE/GREY	TENSIONE PROG. PROG. VOLTAGE
MARRONE GREY	RESET



### ECU CONNECTOR



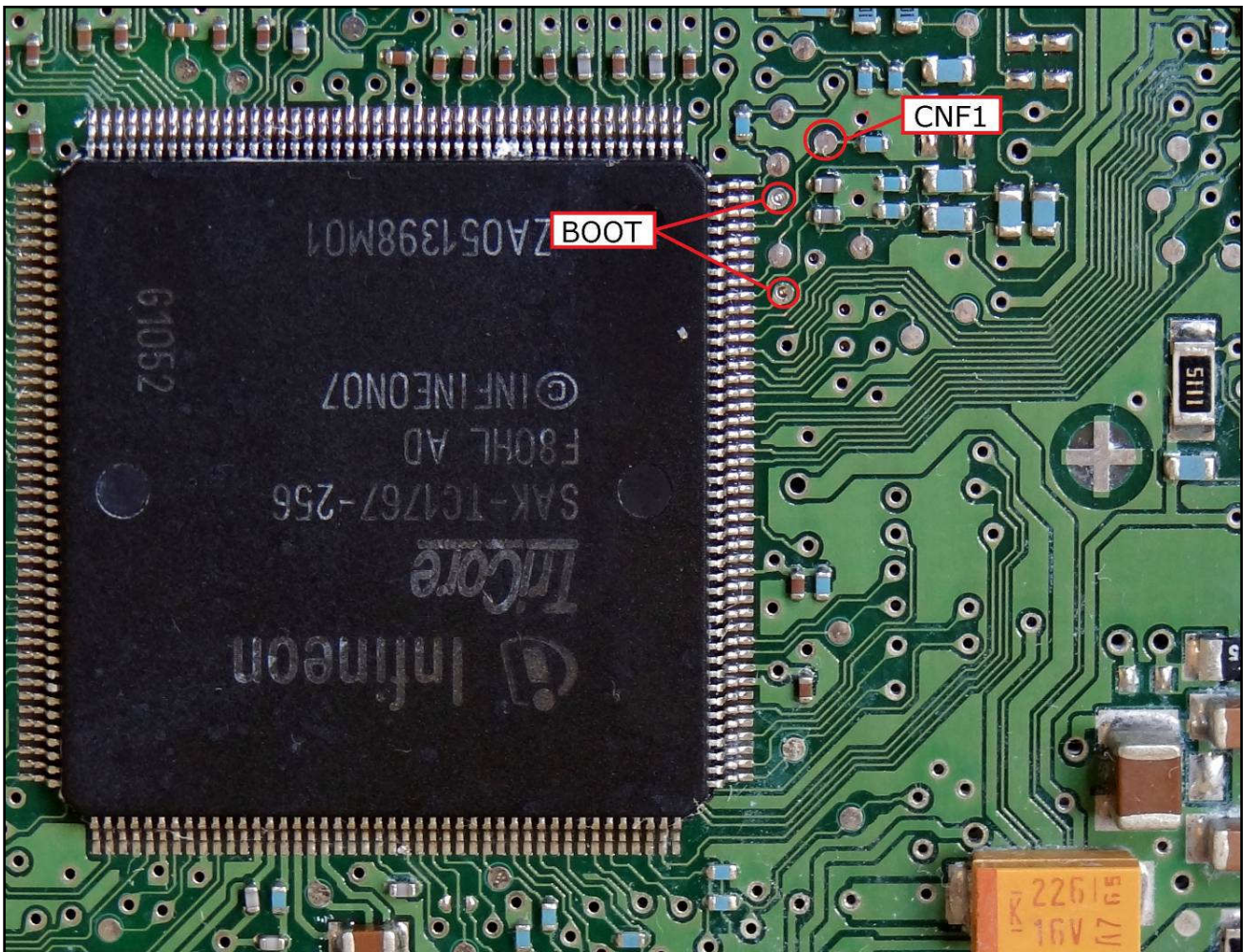
To the pin 4,5,29 connect all +12V RED wires, or it is possible to use one orange wire connected to pin 29.

BOSCH KEFICO MED1798 MEDG1798 IROM TC1767 KIA HYUNDAI

### BOOT/CNF1 CONNECTION

Connect the BLUE and GREY wires of the cable F32GN037C as described:

COLORE FILO WIRE COLOUR	DESCRIZIONE DESCRIPTION
GRIGIO GREY	POL4 BOOT
BLU BLUE	POL5 CNF1

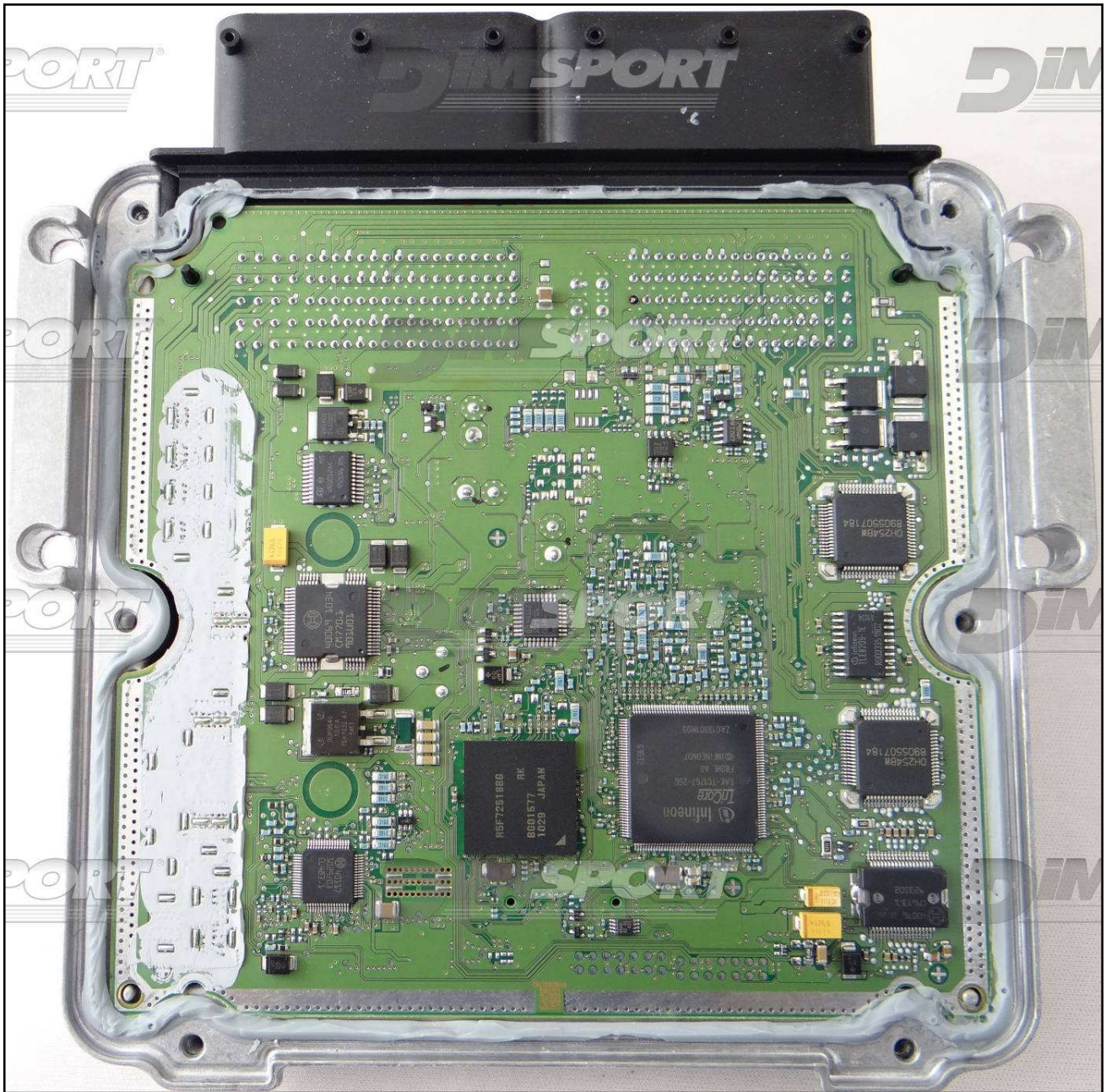


BOSCH KEFICO MED1798 MEDG1798 IROM TC1767 KIA HYUNDAI

**BOSCH KEFICO MEDG17.9.8**



BOSCH KEFICO MED1798 MEDG1798 IROM TC1767 KIA HYUNDAI

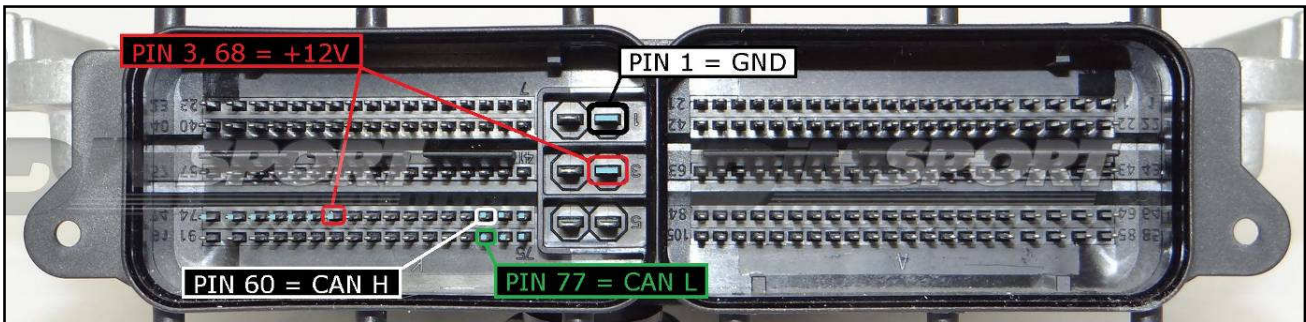
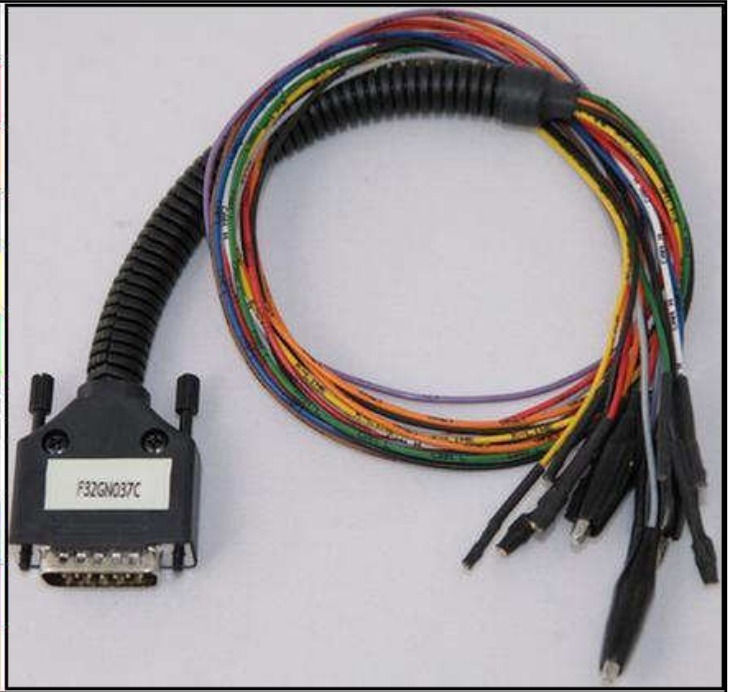


BOSCH KEFICO MED1798 MEDG1798 IROM TC1767 KIA HYUNDAI

### DIRECT CONNECTION

In order to connect to the ECU use the CABLE F32GN037C.  
 Make sure that the POWER led (red) on Trasdata is ON.

COLORE FILO WIRE COLOUR	DESCRIZIONE DESCRIPTION
ROSSO RED	POSITIVO DIRETTO POWER BATTERY
ARANCIO ORANGE	POSITIVO SOTTO QUADRO POWER SWITCH ON
NERO BLACK	MASSA GND
GIALLO YELLOW	KLINE
VERDE GREEN	CAN LOW
BIANCO WHYTE	CAN HIGH
GRIGIO GREY	POL4 BOOT
BLU BLUE	POL5 CNF1
VIOLA/GRIGIO PURPLE/GREY	TENSIONE PROG. PROG. VOLTAGE
MARRONE GREY	RESET



BOSCH KEFICO MED1798 MEDG1798 IROM TC1767 KIA HYUNDAI

### BOOT/CNF1 CONNECTION

Connect the BLUE and GREY wires of the cable F32GN037C as described:

COLORE FILO WIRE COLOUR	DESCRIZIONE DESCRIPTION
GRIGIO GREY	POL4 BOOT
BLU BLUE	POL5 CNF1

