

MARELLI 10GF BAM FCA

plugin 1536



# MARELLI 10GF BAM FCA

Upper side with Microprocessor



# MARELLI 10GF BAM FCA

Lower side

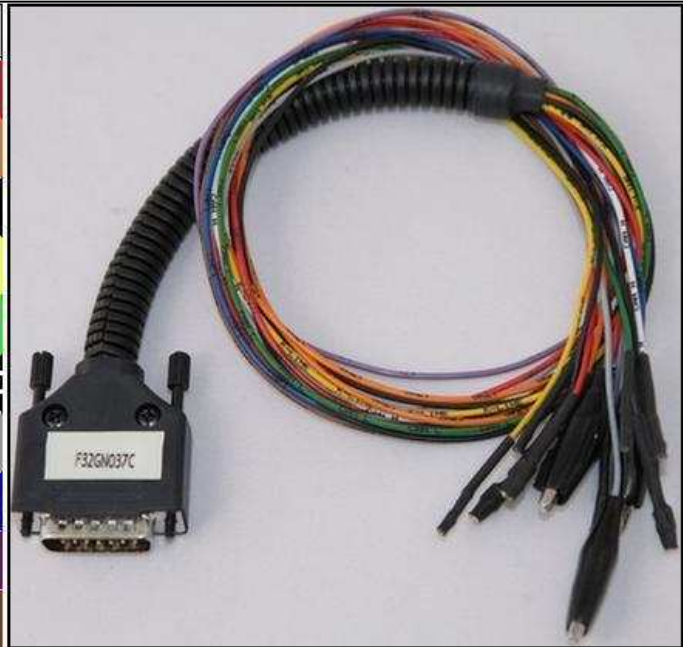


## MARELLI 10GF BAM FCA

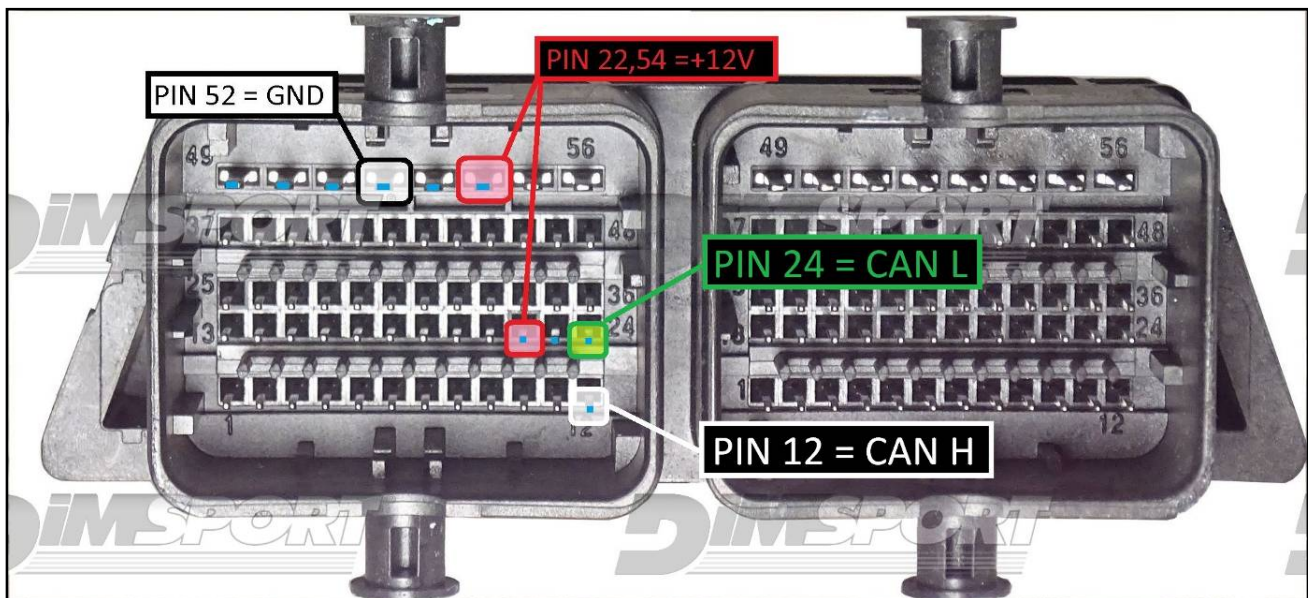
### DIRECT CONNECTION

In order to connect to the ECU use the cable F32GN037C/D.  
Make sure that the POWER led (red) on Trasdata is ON.

COLORE FILO WIRE COLOUR	DESCRIZIONE DESCRIPTION
ROSSO RED	POSITIVO DIRETTO POWER BATTERY
ARANCIO ORANGE	POSITIVO SOTTO QUADRO POWER SWITCH ON
NERO BLACK	MASSA GND
GIALLO YELLOW	KLINE
VERDE GREEN	CAN LOW
BIANCO WHITE	CAN HIGH
GRIGIO GREY	POL4 BOOT
BLU BLUE	POL5 CNF1
VIOLA/GRIGIO PURPLE/GREY	TENSIONE PROG. PROG. VOLTAGE
MARRONE BROWN	RESET

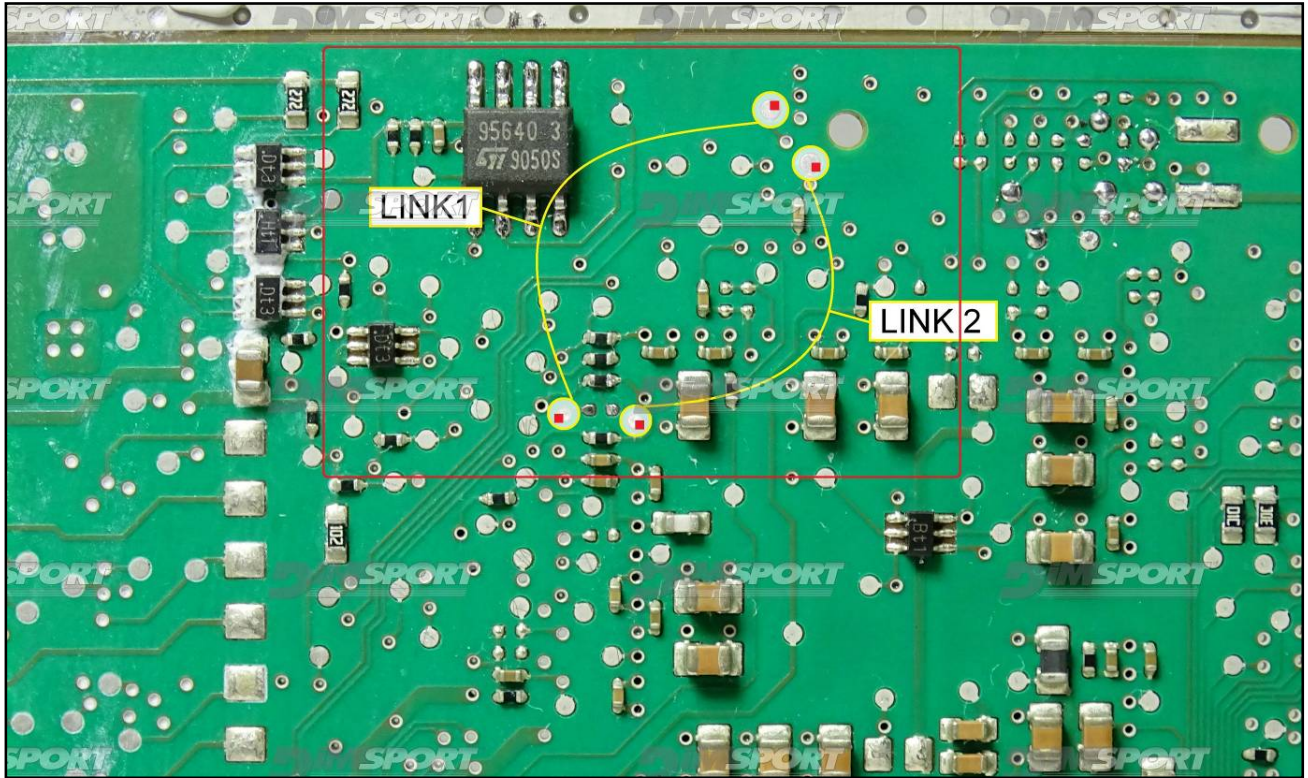


### ECU CONNECTOR



## MARELLI 10GF BAM FCA

**WARNING :** in order to read&write properly the ECU it is necessary to perform two LINK, remove them before placing back the ECU into the vehicle.



# MARELLI 10GF BAM FCA

## DIRECT CONNECTION CNF1

Connect the BLUE wire of the cable F32GN037C/D as described here below:

COLORE FILO WIRE COLOUR	DESCRIZIONE DESCRIPTION
BLU BLUE	CNF1

