

MARELLI 10GF FCA

plugin 1544



MARELLI 10GF FCA

Microprocessor side



MARELLI 10GF FCA

Microprocessor's opposite side

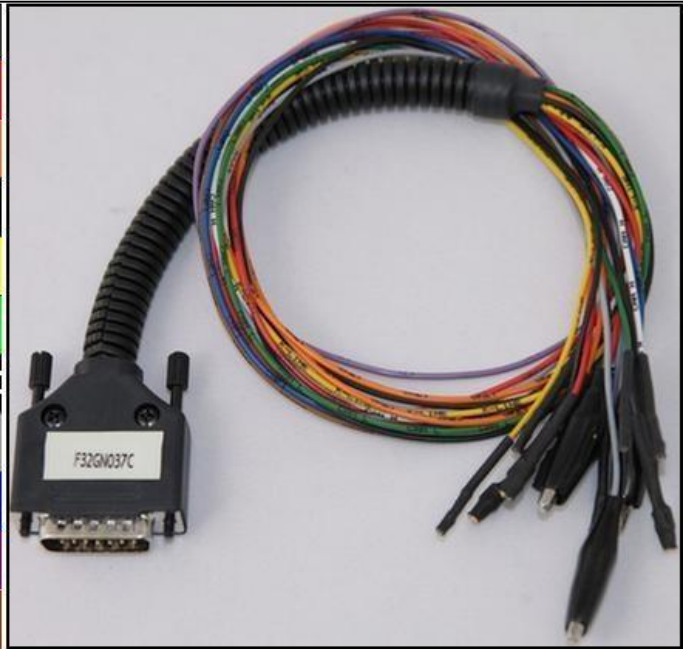


MARELLI 10GF FCA

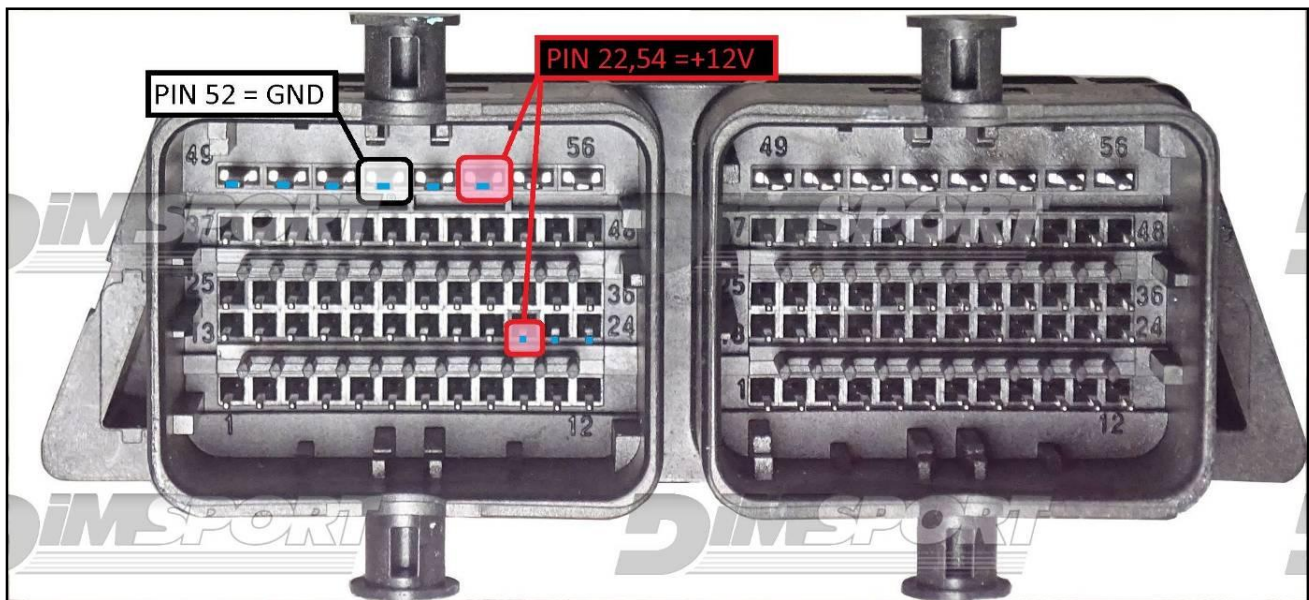
DIRECT CONNECTION

In order to connect to the ECU use the CABLE F32GN037C/D.
Make sure that the POWER led (red) on Trasdata is ON.

COLORE FILO WIRE COLOUR	DESCRIZIONE DESCRIPTION
ROSSO RED	POSITIVO DIRETTO POWER BATTERY
ARANCIO ORANGE	POSITIVO SOTTO QUADRO POWER SWITCH ON
NERO BLACK	MASSA GND
GIALLO YELLOW	KLINE
VERDE GREEN	CAN LOW
BIANCO WHITE	CAN HIGH
GRIGIO GREY	POL4 BOOT
BLU BLUE	POL5 CNF1
VIOLA/GRIGIO PURPLE/GREY	TENSIONE PROG. PROG. VOLTAGE
MARRONE BROWN	RESET



ECU CONNECTOR



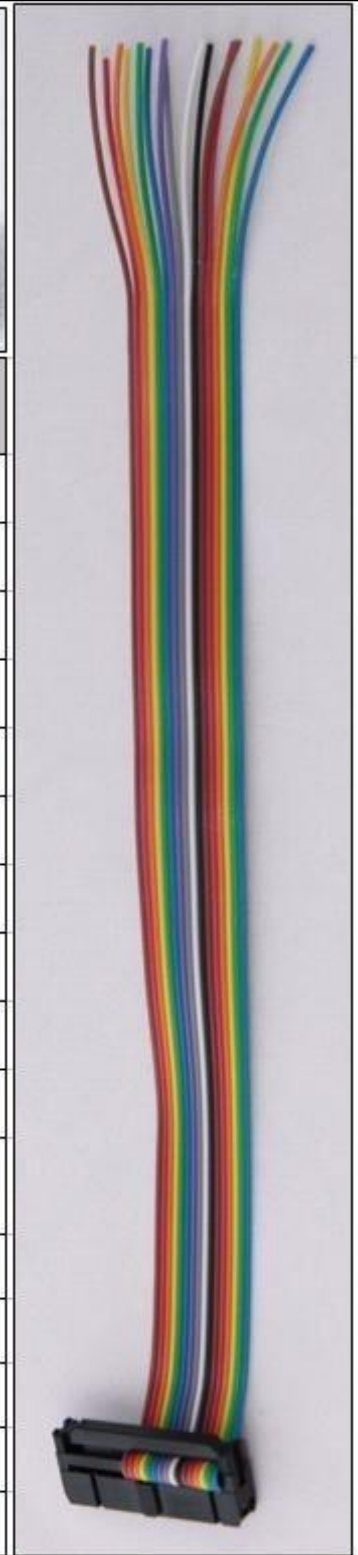
MARELLI 10GF FCA

J-TAG LOOSE WIRES CONNECTION

Connect the cable F34NTF53 as shown here



Pin	Colore Colour
11	Non usato Not used
12	Non usato Not used
13	Non usato Not used
14	Non usato Not used
15	Non usato Not used
16	Blu Blue
17	Non usato Not used
18	Grigio Grey
19	Bianco White
20	Nero Black
21	Non usato Not used
22	Rosso Red
23	Non usato Not used
24	Giallo Yellow
25	Verde Green
26	Non usato Not used

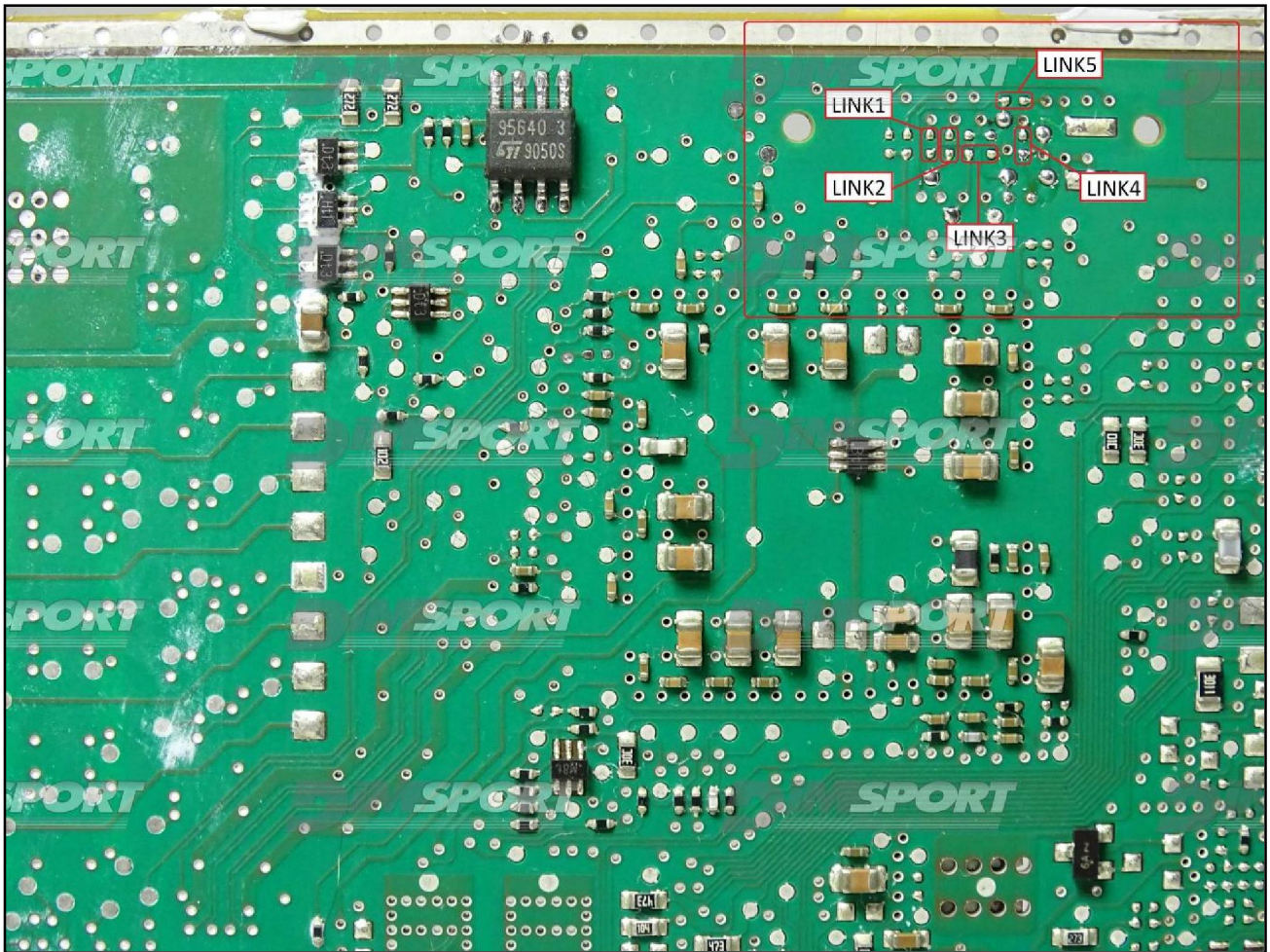


MARELLI 10GF FCA

Warning : to enable the J-TAG communication it is necessary to perform the 5 short-circuits LINKS as displayed in the following pictures.

The ECU can be placed back in the vehicle without removing the short-circuits LINK

Microprocessor's opposite side



MARELLI 10GF FCA

Connect the wires on the pads avoiding any short circuits. Remember to perform the LINKS as shown at pg.6, otherwise JTAG communication will not be active.

