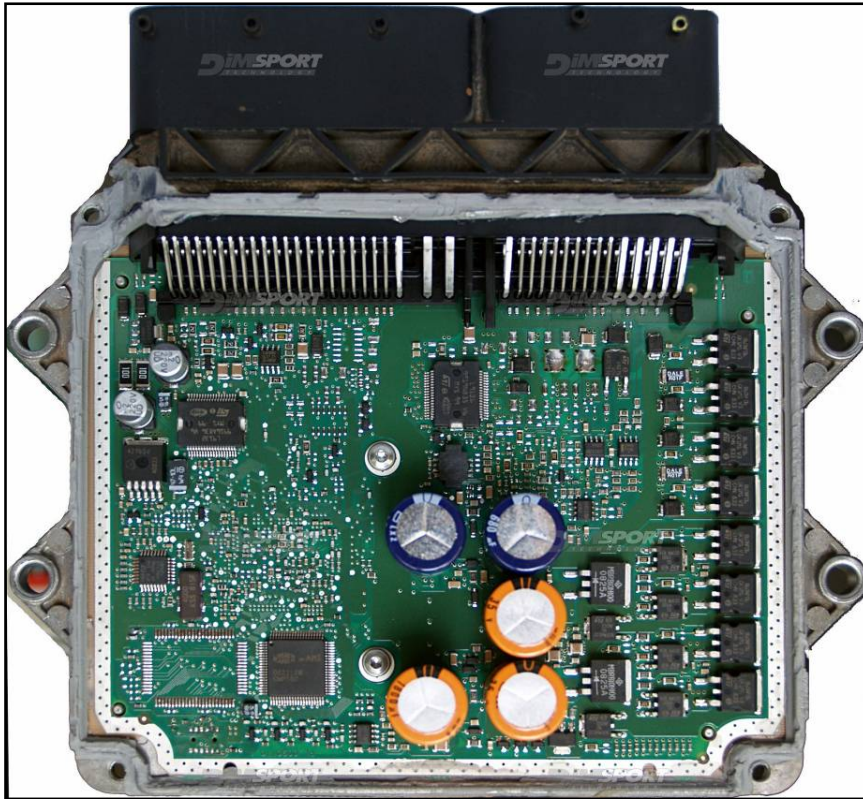
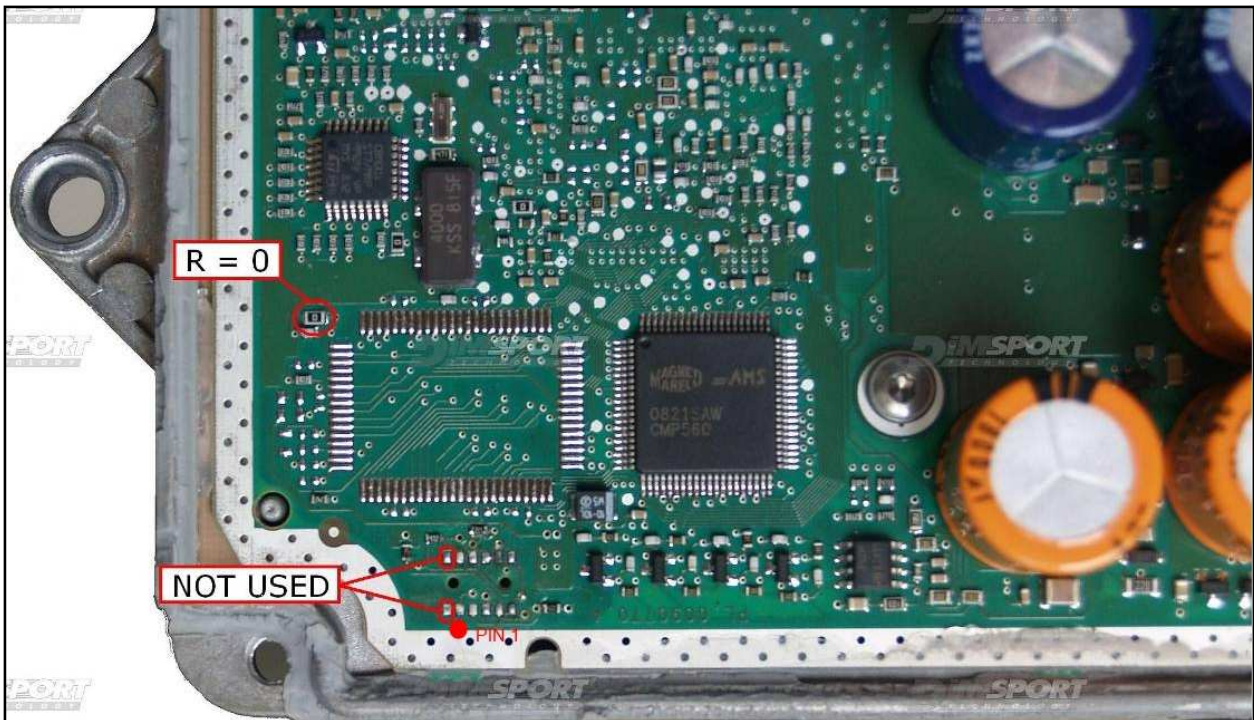


# MARELLI 6F3 IROM

plugin 348,349



To enable the reading/writing procedure it is necessary to remove the resistor 0 shown in the following picture. After the modification it is NOT necessary to solder it back.

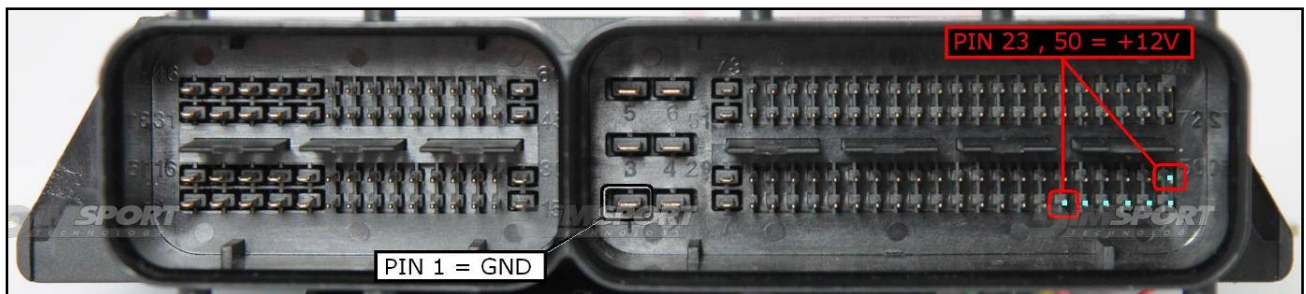
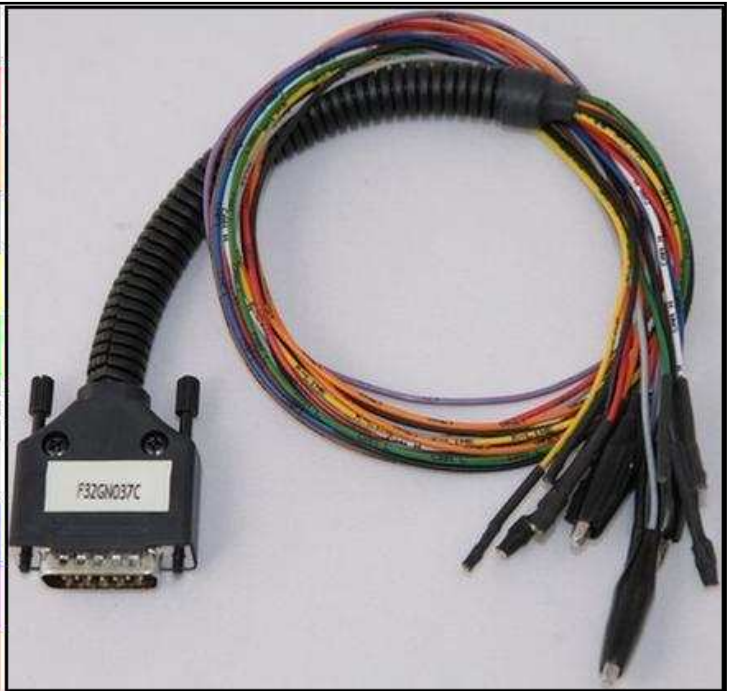


## MARELLI 6F3 IROM

### DIRECT CONNECTION

In order to connect to the ECU use the CABLE F32GN037C.  
Make sure that the POWER led (red) on Trasdata is ON.  
Use the same connection for the DIMA too.

COLORE FILO WIRE COLOUR	DESCRIZIONE DESCRIPTION
ROSSO RED	POSITIVO DIRETTO POWER BATTERY
ARANCIO ORANGE	POSITIVO SOTTO QUADRO POWER SWITCH ON
NERO BLACK	MASSA GND
GIALLO YELLOW	KLINE
VERDE GREEN	CAN LOW
BIANCO WHITE	CAN HIGH
GRIGIO GREY	POL4 BOOT
BLU BLUE	POL5 CNF1
VIOLA/GRIGIO PURPLE/GREY	TENSIONE PROG. PROG. VOLTAGE
MARRONE BROWN	RESET

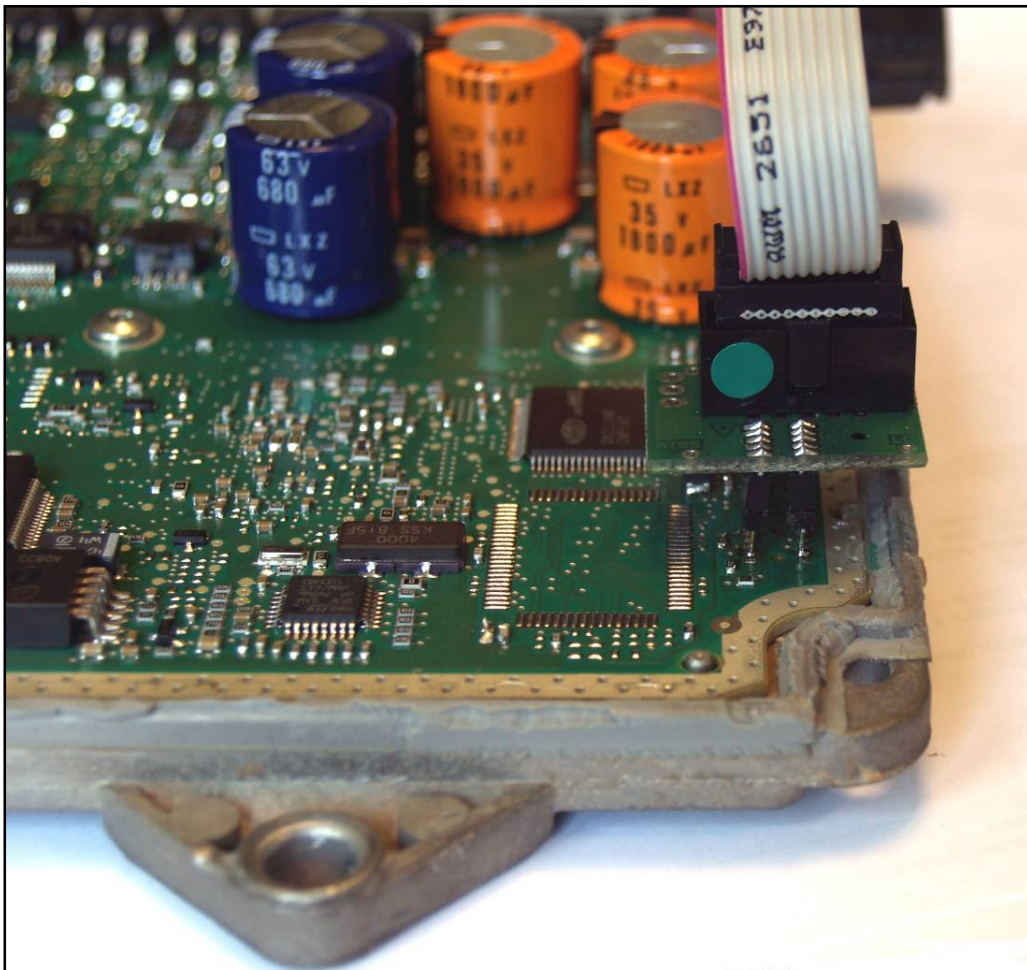
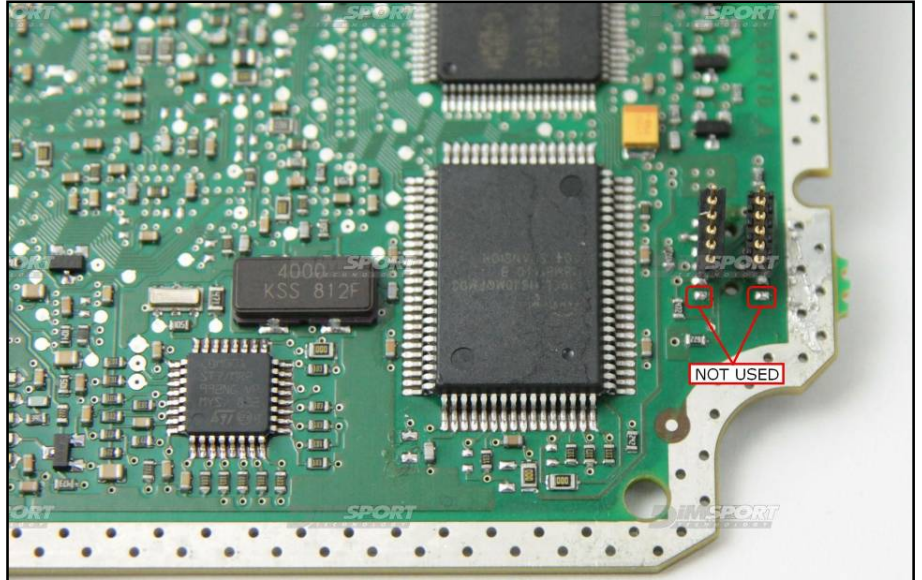
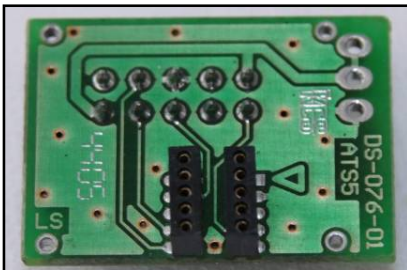
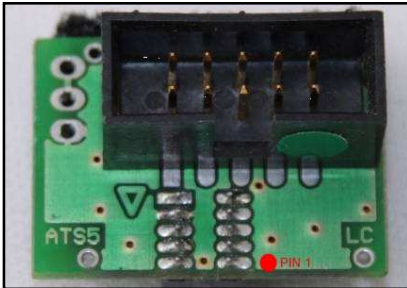


**WARNING:** with Trasdata system it is NOT possible to use the old F34FL002 adapter or the F34NTA02 adapter.

## MARELLI 6F3 IROM

### F34NTA06 adapter CONNECTION

Leave the first 2 lay-by pin free, align the flat connector to the condensers.



## MARELLI 6F3 IROM

### METAL POSITIONING FRAME CONNECTION

Use the ADAPTER ECU F34DM003 + F34DM005 (MARELLI) as described in the following pictures.  
The ECU MUST be powered through the F32GN037C wiring.

