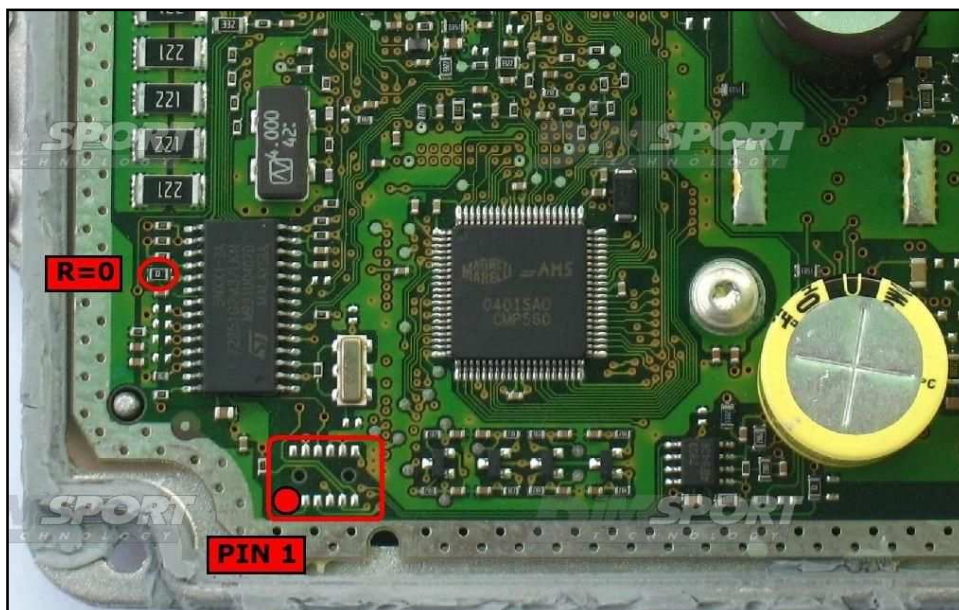


MARELLI MJD6JF 6JO

Plugin 0008 Marelli MJD6JF FAL
Plugin 0009 Marelli MJD6JO01D Suzuki
Plugin 0010 Marelli MJD6JO01D Opel



To enable the reading/writing procedure it is necessary to remove the resistor 0 shown in the following picture. After the modification it is NOT necessary to solder it back.

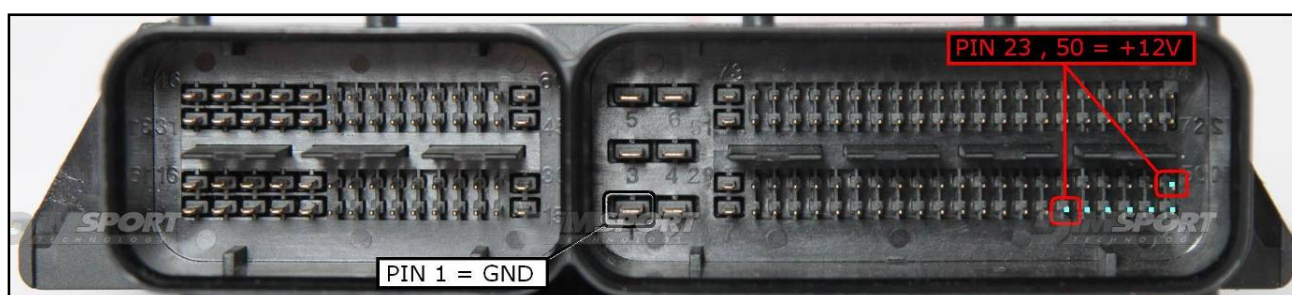
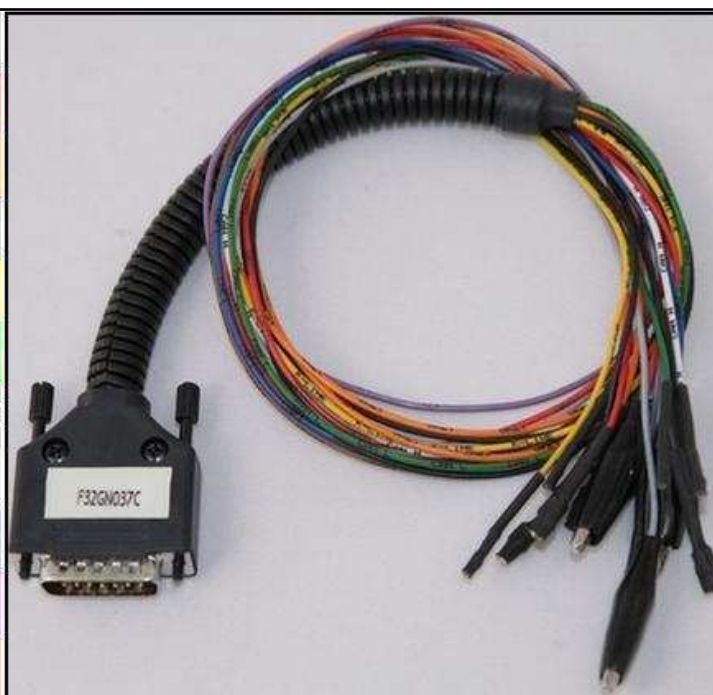


MARELLI MJD6JF 6JO

DIRECT CONNECTION

In order to connect to the ECU use the CABLE F32GN037C.
Make sure that the POWER led (red) on Trasdata is ON.
Use the same connection for the DIMA too.

| COLORE FILO WIRE COLOUR | DESCRIZIONE DESCRIPTION |
|-----------------------------|--|
| ROSSO RED | POSITIVO DIRETTO POWER BATTERY |
| ARANCIO ORANGE | POSITIVO SOTTO QUADRO POWER SWITCH ON |
| NERO BLACK | MASSA GND |
| GIALLO YELLOW | KLINE |
| VERDE GREEN | CAN LOW |
| BIANCO WHITE | CAN HIGH |
| GRIGIO GREY | POL4 BOOT |
| BLU BLUE | POL5 CNF1 |
| VIOLA/GRIGIO PURPLE/GREY | TENSIONE PROG. PROG. VOLTAGE |
| MARRONE BROWN | RESET |

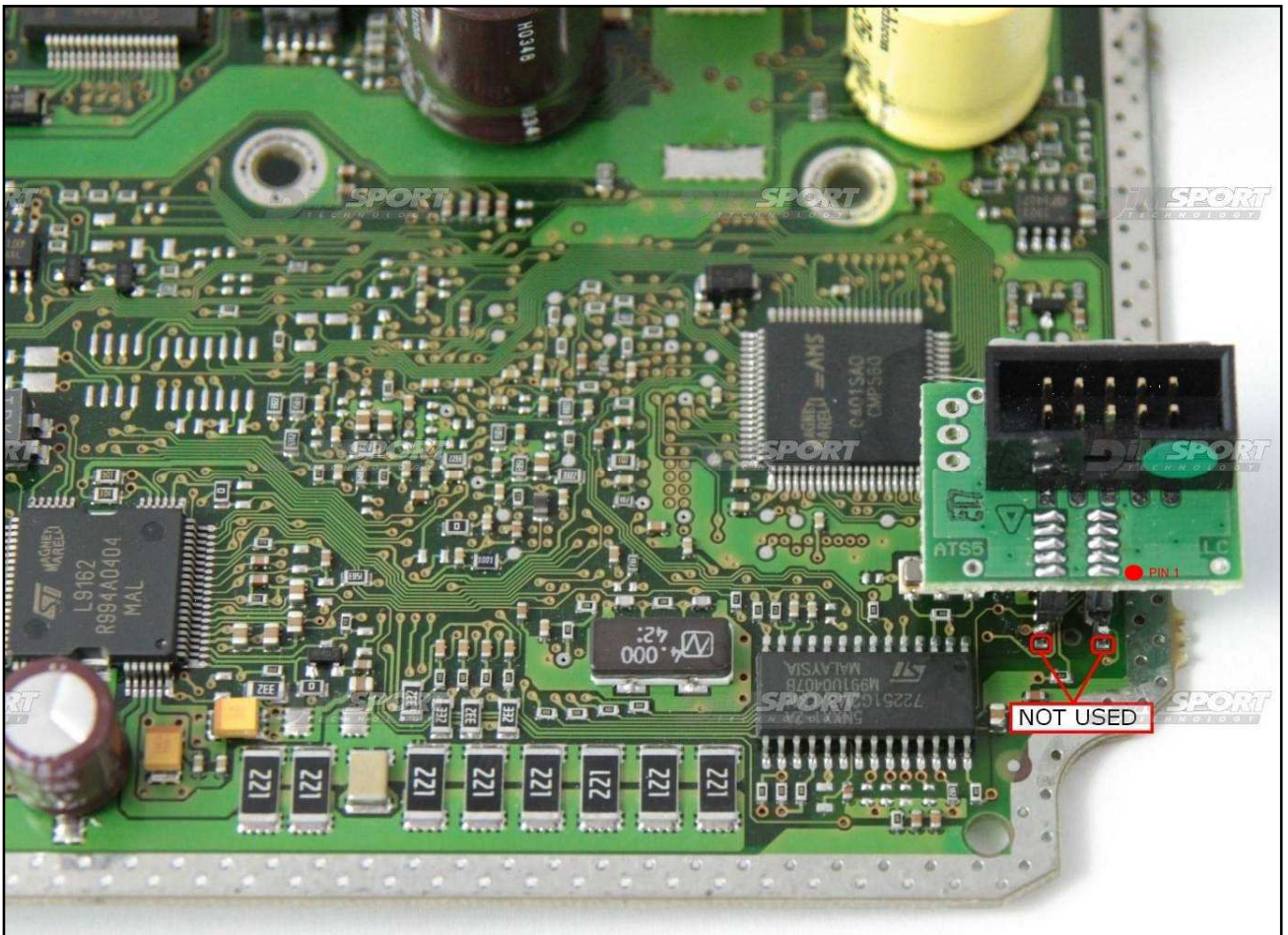
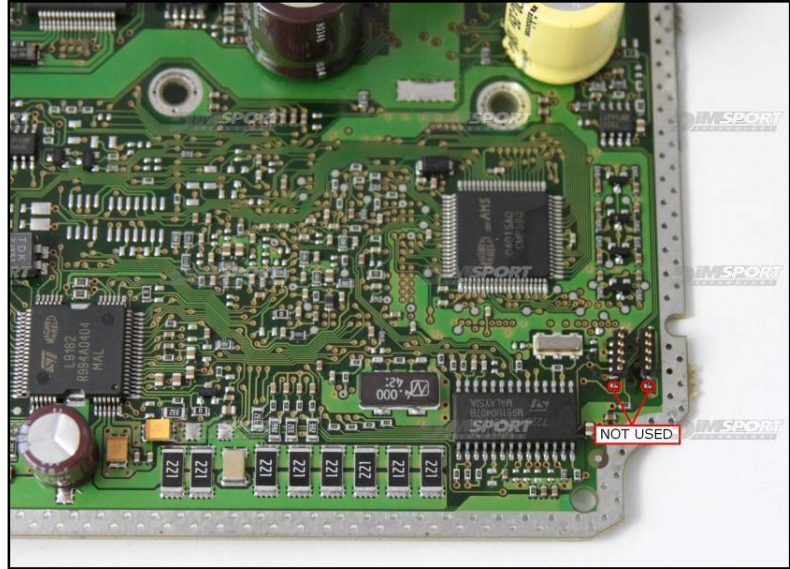
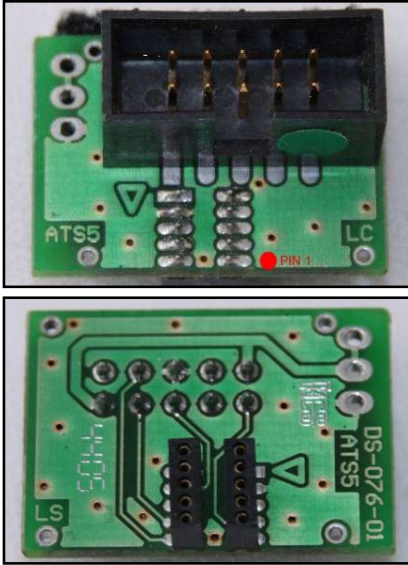


WARNING: with Trasdata system it is NOT possible to use the old F34FL002 adapter or the F34NTA02 adapter.

MARELLI MJD6JF 6JO

F34NTA06 adapter CONNECTION

Leave the first 2 lay-by pin free, align the flat connector to the condensers.



MARELLI MJD6JF 6JO

DIMA CONNECTION

Use the ADAPTER ECU F34DM003 + F34DM005 (MARELLI) as described in the following pictures. The ECU MUST be powered through the F32GN037C wiring.

