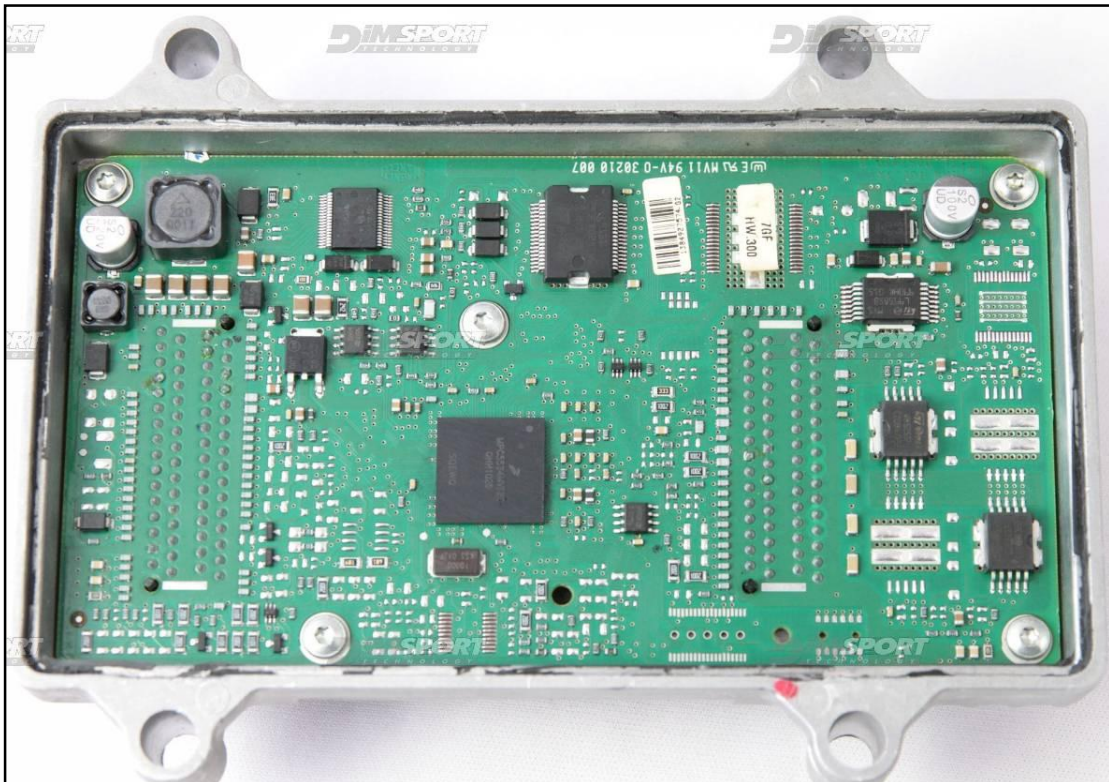


MARELLI 7GF MPC5534 FAL

plugin **247**

The lay-by pins are placed in the lower part of the ECU.

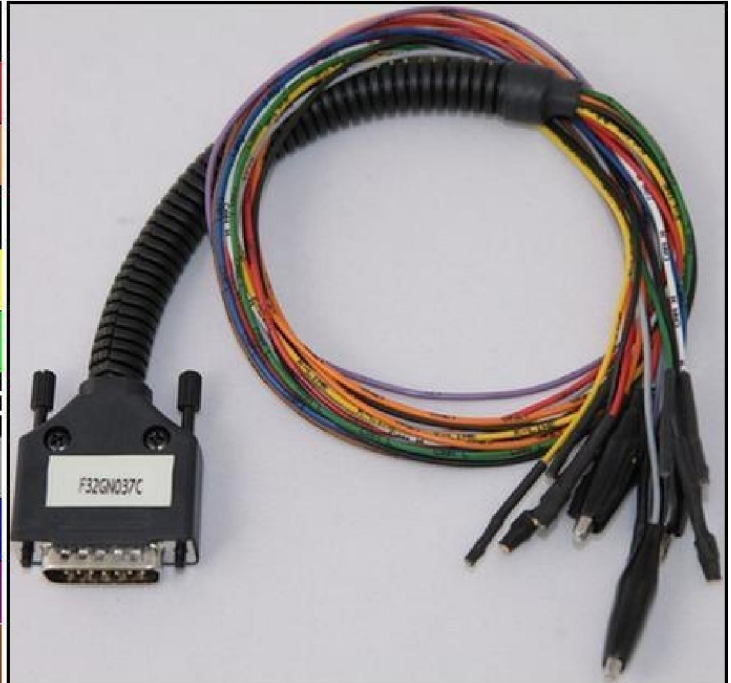


MARELLI 7GF MPC5534 FAL

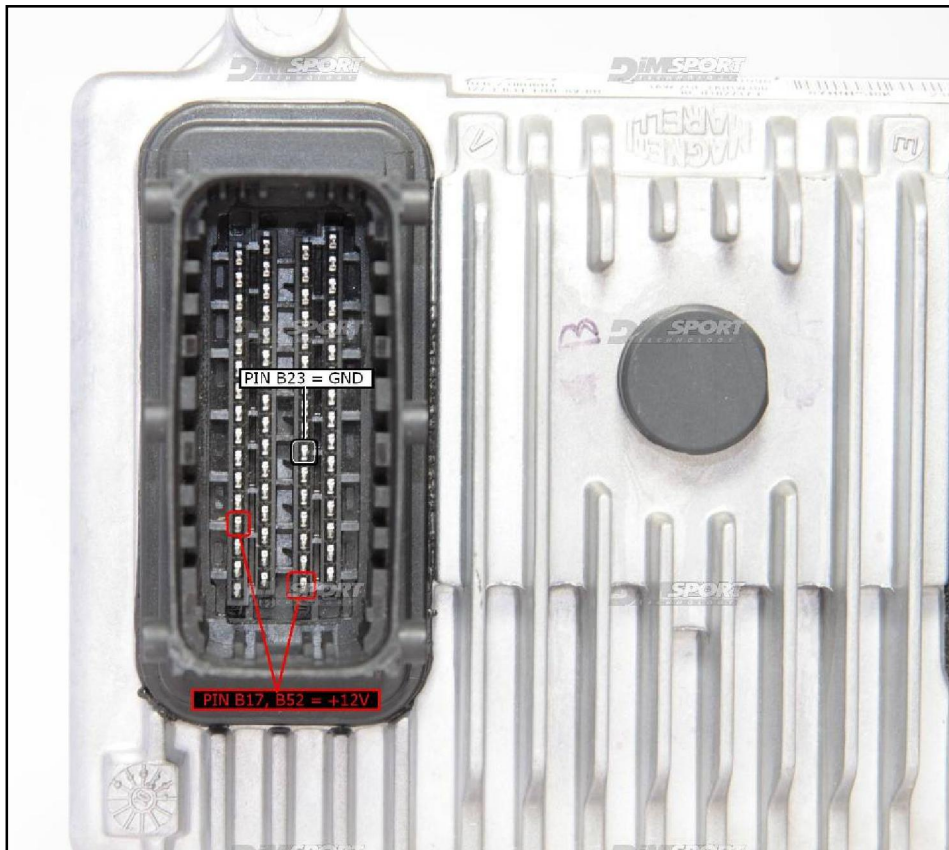
DIRECT CONNECTION

In order to connect to the ECU use the CABLE F32GN037C.
Make sure that the POWER led (red) on Trasdata is ON.

COLORE FILO WIRE COLOUR	DESCRIZIONE DESCRIPTION
ROSSO RED	POSITIVO DIRETTO POWER BATTERY
ARANCIO ORANGE	POSITIVO SOTTO QUADRO POWER SWITCH ON
NERO BLACK	MASSA GND
GIALLO YELLOW	KLINE
VERDE GREEN	CAN LOW
BIANCO WHITE	CAN HIGH
GRIGIO GREY	POL4 BOOT
BLU BLUE	POL5 CNF1
VIOLA/GRIGIO PURPLE/GREY	TENSIONE PROG. PROG. VOLTAGE
MARRONE BROWN	RESET



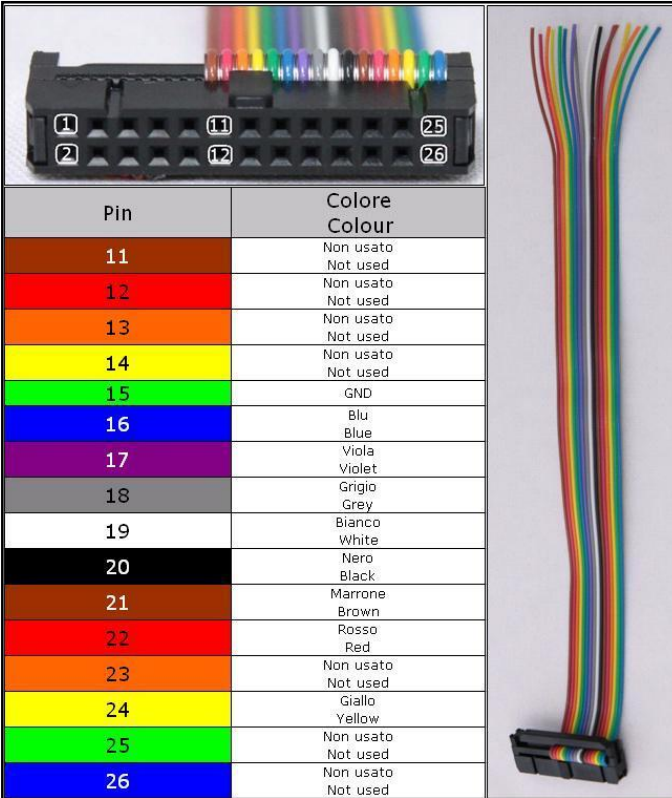
ECU CONNECTOR



MARELLI 7GF MPC5534 FAL

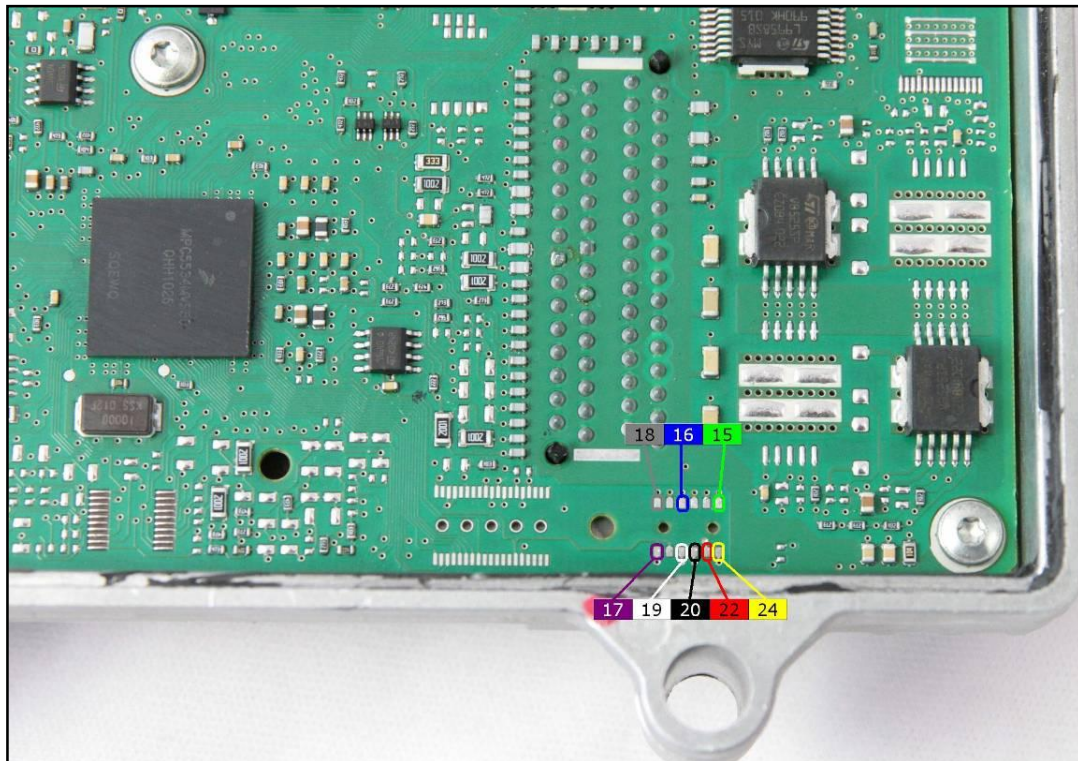
DIRECT CONNECTION J-TAG

Use the FLAT cable F34NTF53 as shown in the following picture



Pin	Colore Colour
11	Non usato Not used
12	Non usato Not used
13	Non usato Not used
14	Non usato Not used
15	GND
16	Blu Blue
17	Viola Violet
18	Grigio Grey
19	Bianco White
20	Nero Black
21	Marrone Brown
22	Rosso Red
23	Non usato Not used
24	Giallo Yellow
25	Non usato Not used
26	Non usato Not used

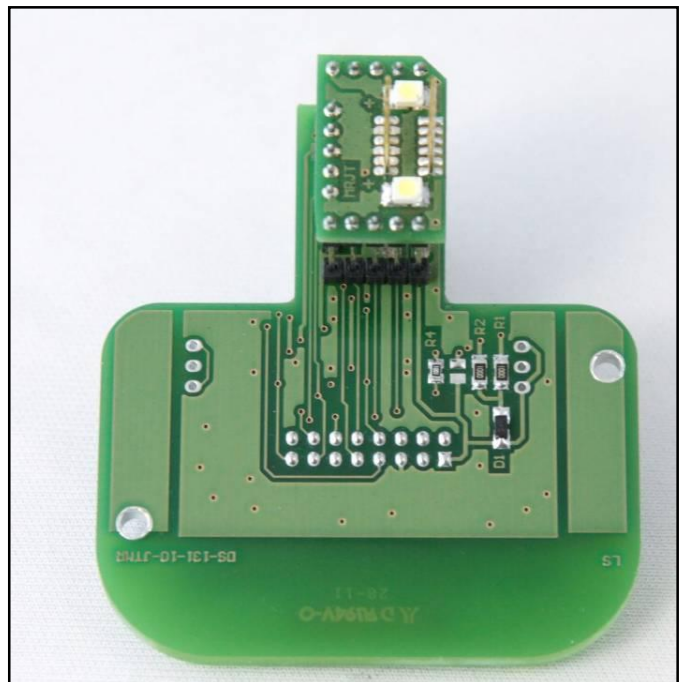
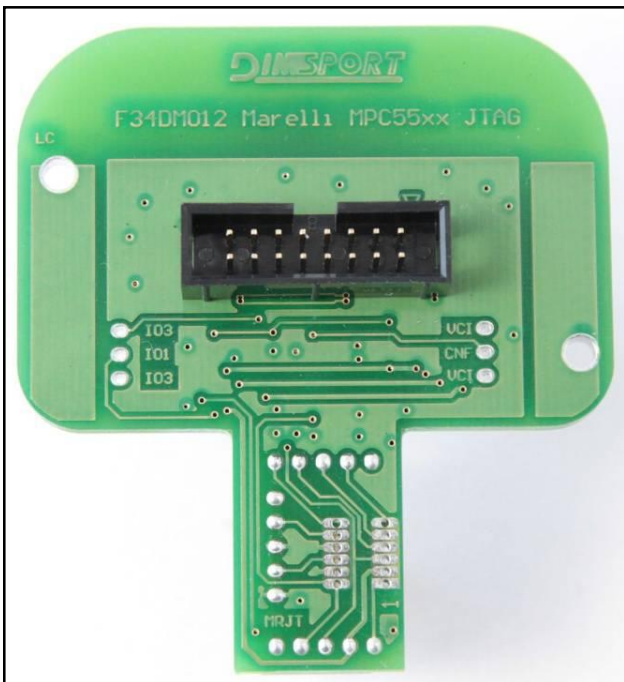
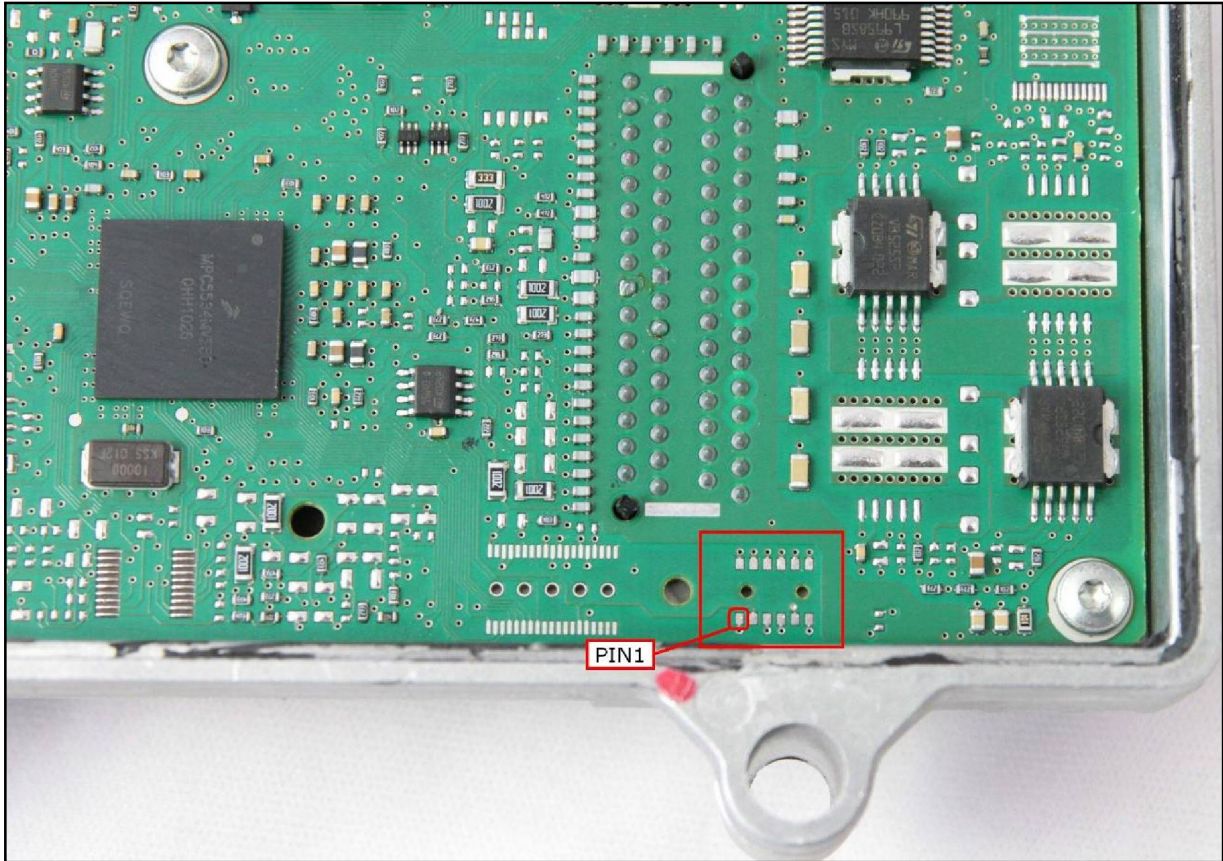
WARNING: connect the wirings without any shortcircuits between the pads



MARELLI 7GF MPC5534 FAL

METAL POSITIONING FRAME CONNECTION

JTAG communication pads are placed under the microprocessor, for the metal positioning frame connection is required the F34DM012 adapter.



MARELLI 7GF MPC5534 FAL

Place the F34DM012 adapter as shown in the following pictures, check the correct position on the del PIN 1.

