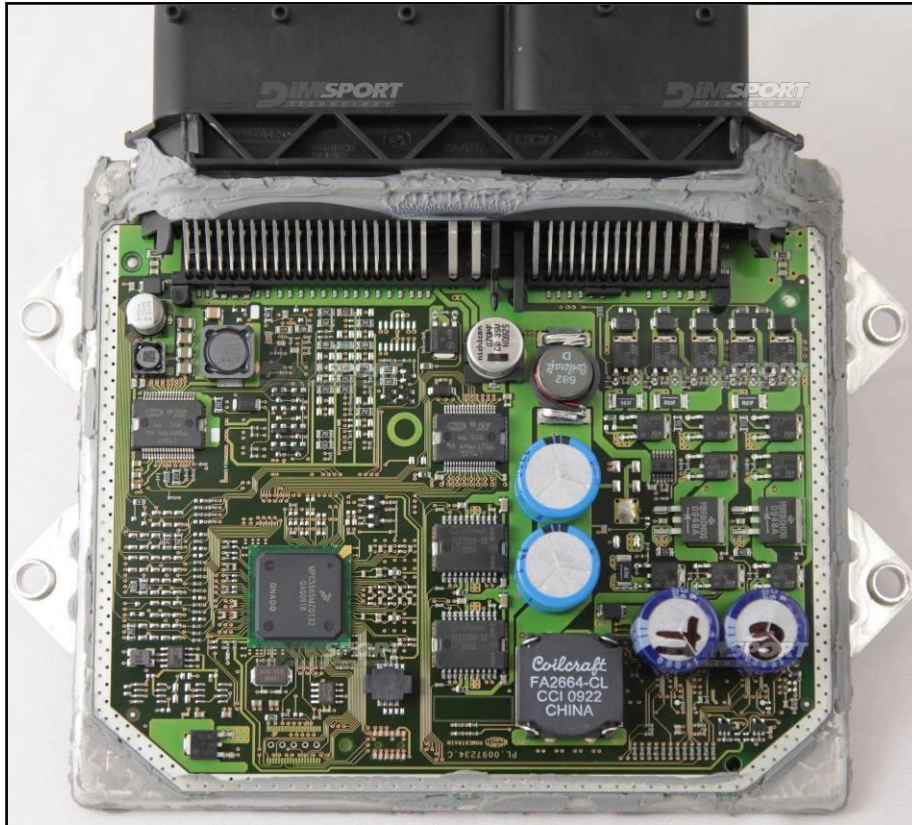


# MARELLI 8DF/8DS/8F2/8F3

## plugin 303-364-382-645-1780

The lay-by pins are placed in the lower part of the ECU.



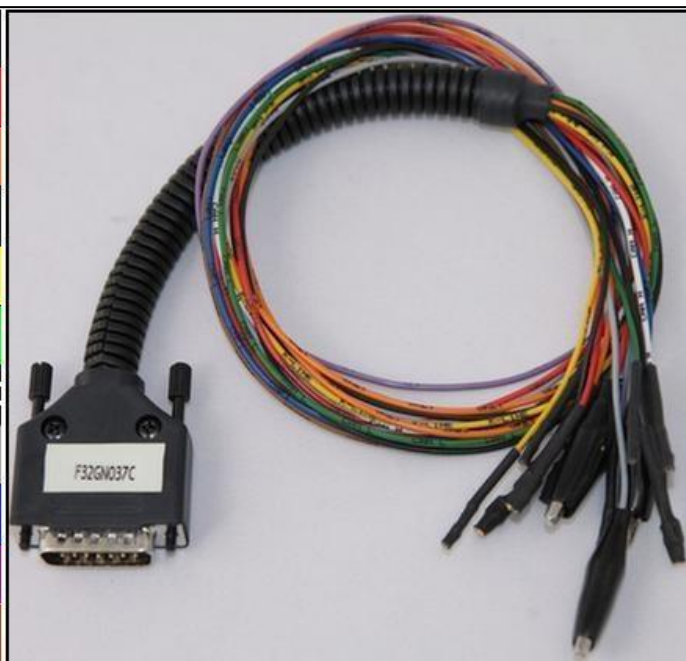
## DIRECT CONNECTION

In order to connect to the ECU use the CABLE F32GN037C/D.

Make sure that the POWER led (red) on Trasdata is ON.

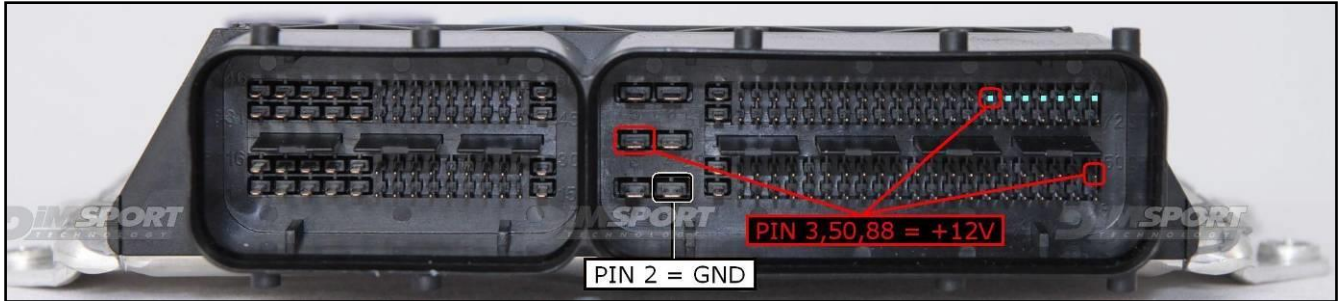
Use the same connection for the DIMA too.

COLORE FILO WIRE COLOUR	DESCRIZIONE DESCRIPTION
ROSSO RED	POSITIVO DIRETTO POWER BATTERY
ARANCIO ORANGE	POSITIVO SOTTO QUADRO POWER SWITCH ON
NERO BLACK	MASSA GND
GIALLO YELLOW	KLINE
VERDE GREEN	CAN LOW
BIANCO WHITE	CAN HIGH
GRIGIO GREY	POL4 BOOT
BLU BLUE	POL5 CNF1
VIOLA/GRIGIO PURPLE/GREY	TENSIONE PROG. PROG. VOLTAGE
MARRONE BROWN	RESET



# MARELLI 8DF/8DS/8F2/8F3

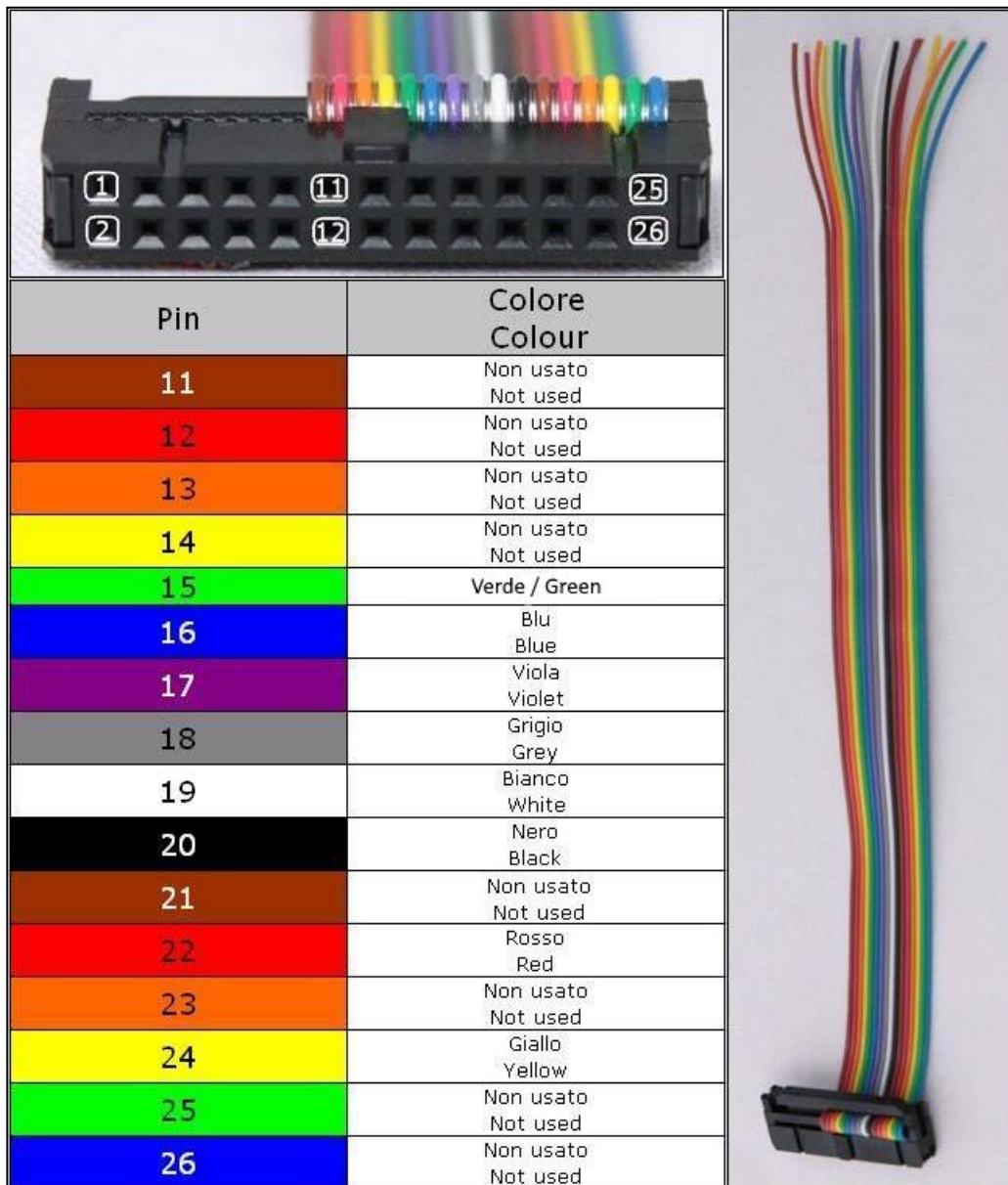
## ECU CONNECTOR



To the pin 3,50,88 you can connect both wires red and orange, they both have 12 Volt signal.

## J-TAG FREE WIRING CONNECTION

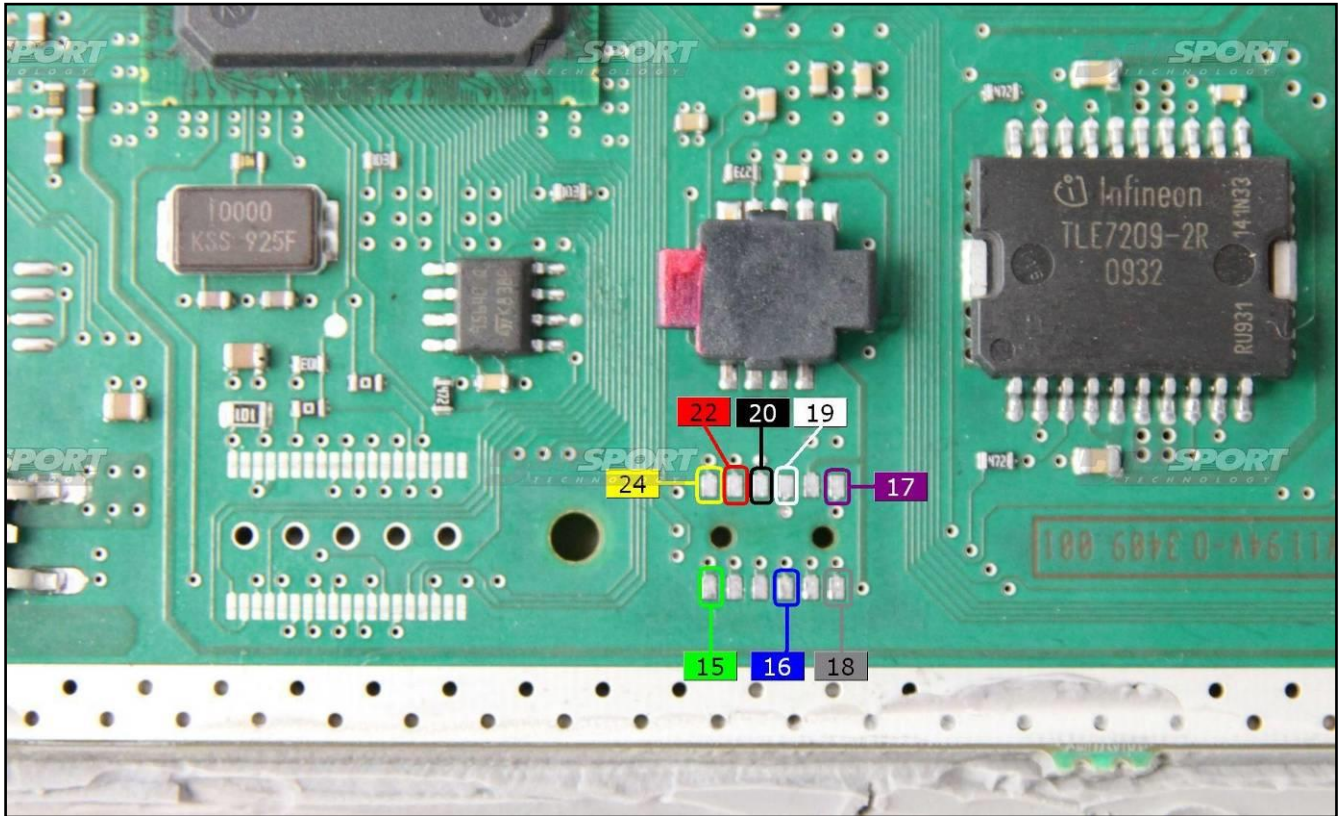
Connect the F34NTF53 wiring as explained here below :

A photograph of a multi-colored J-tag wiring harness with a black connector. The harness has 26 wires, each with a different color. The connector has pins labeled 1, 2, 11, 12, 25, and 26.

Pin	Colore Colour
11	Non usato Not used
12	Non usato Not used
13	Non usato Not used
14	Non usato Not used
15	Verde / Green
16	Blu Blue
17	Viola Violet
18	Grigio Grey
19	Bianco White
20	Nero Black
21	Non usato Not used
22	Rosso Red
23	Non usato Not used
24	Giallo Yellow
25	Non usato Not used
26	Non usato Not used

# MARELLI 8DF/8DS/8F2/8F3

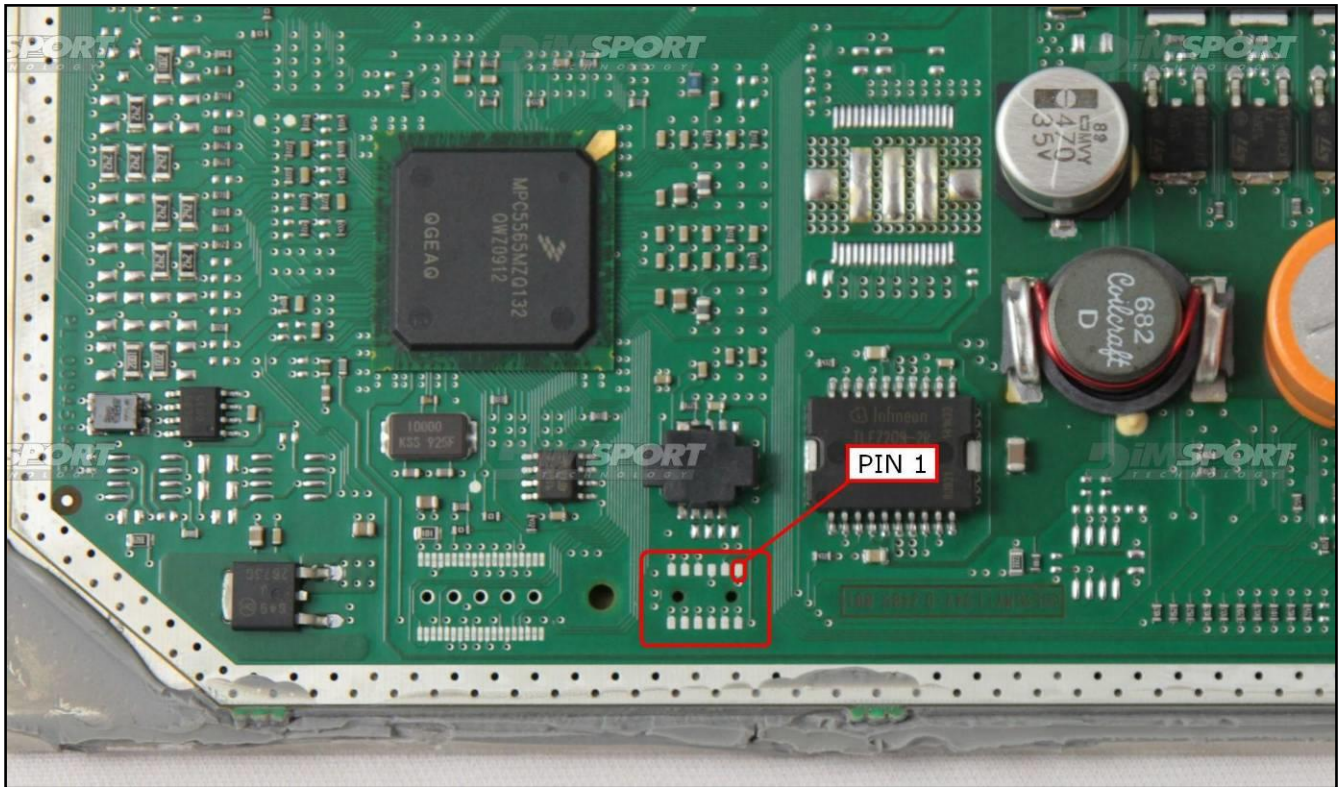
**WARNING:** solder the wires by paying attention NOT to short-circuit the signals of the wires



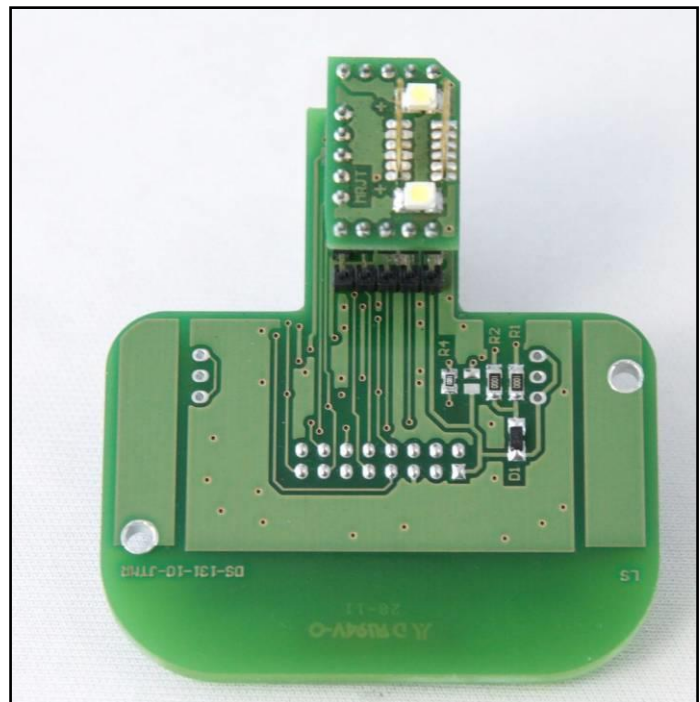
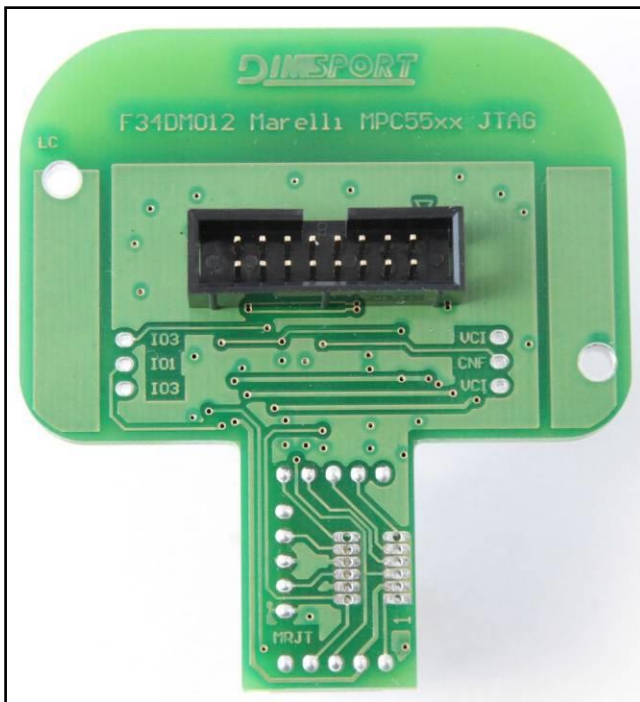
# MARELLI 8DF/8DS/8F2/8F3

## DIMA CONNECTION

JTAG communication pads are placed under the microprocessor.



Use the DIMA adapter F34DM012



## MARELLI 8DF/8DS/8F2/8F3

Place the F34DM012 adapter as shown in the following picture, check the correct position of the PIN 1

