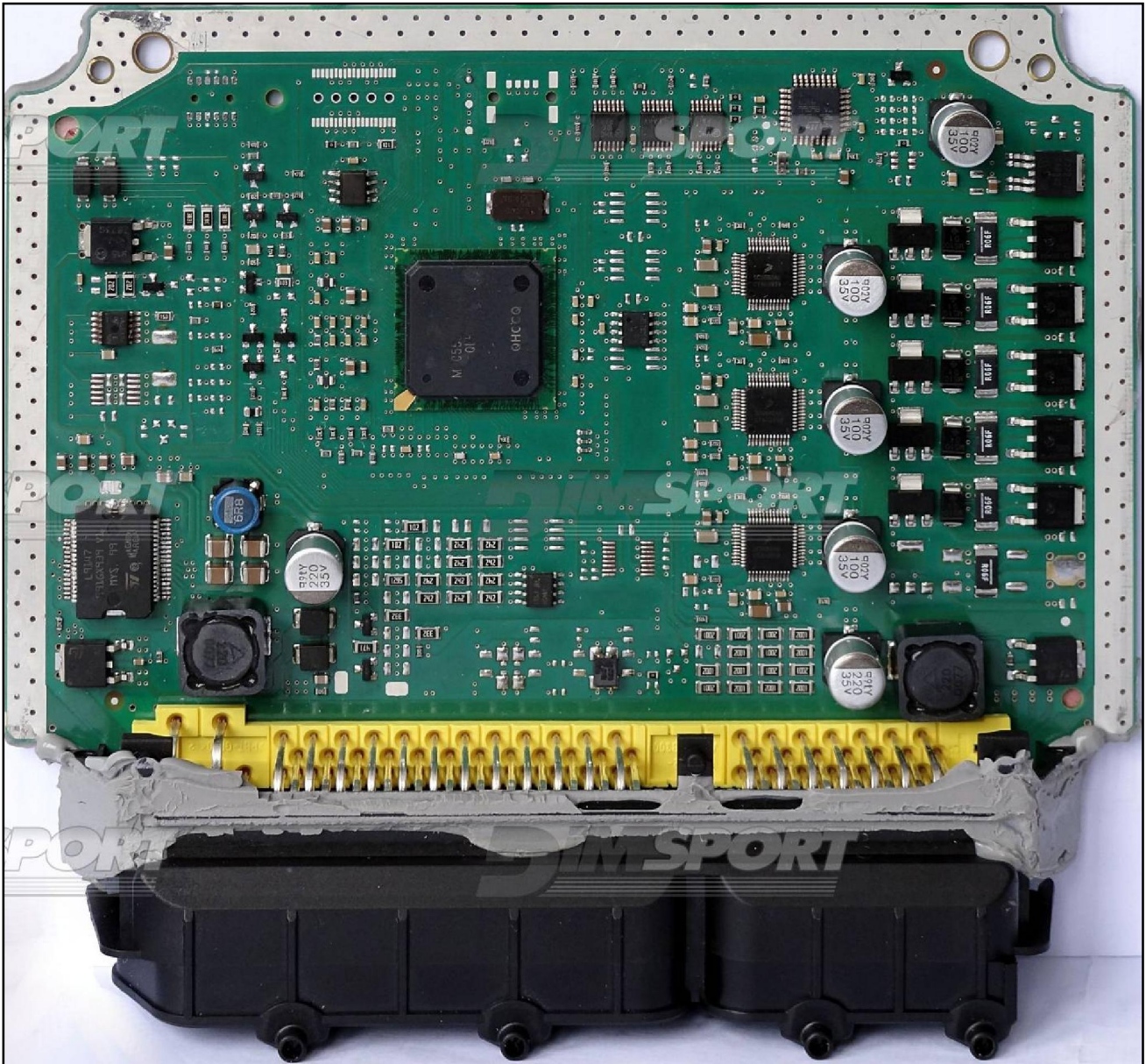


MARELLI 8TDF MPC5553 FAL

plugin 413



MARELLI 8TDF MPC5553 FAL

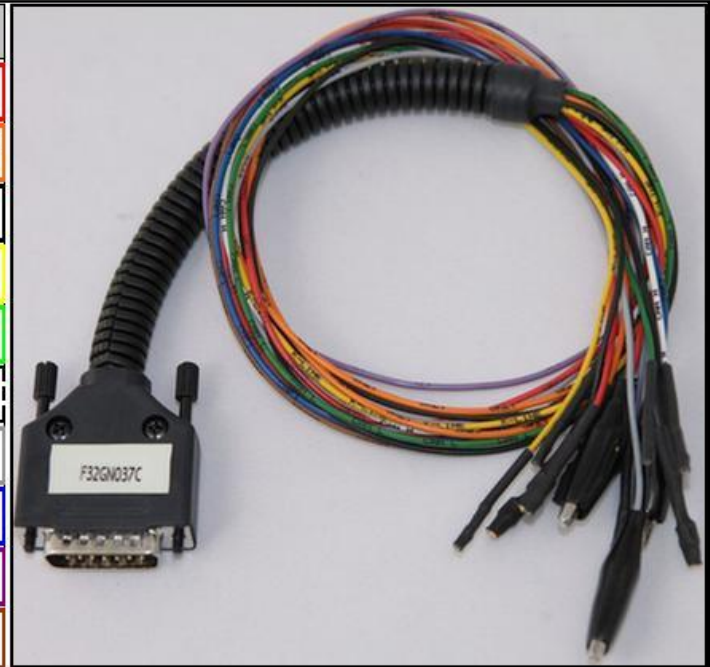


MARELLI 8TDF MPC5553 FAL

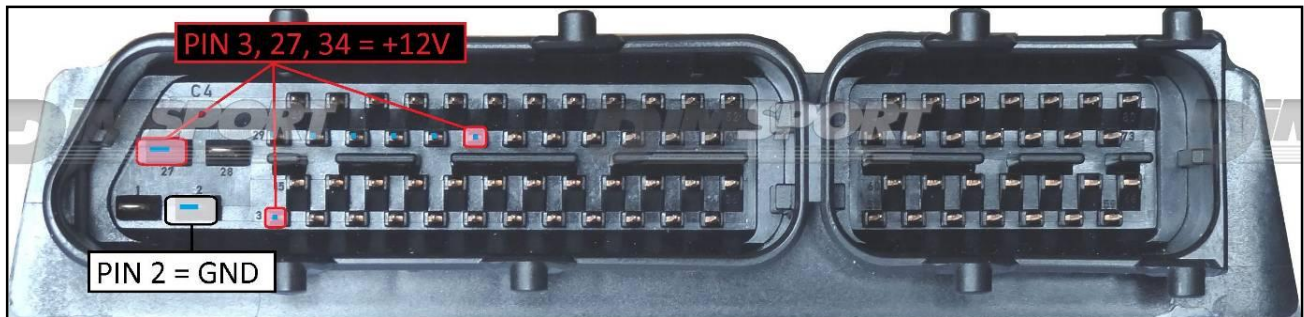
DIRECT CONNECTION

In order to connect to the ECU use the CABLE F32GN037C.
Make sure that the POWER led (red) on Trasdata is ON.

COLORE FILO WIRE COULOR	DESCRIZIONE DESCRIPTION
ROSSO RED	POSITIVO DIRETTO POWER BATTERY
ARANCIO ORANGE	POSITIVO SOTTO QUADRO POWER SWITCH ON
NERO BLACK	MASSA GND
GIALLO YELLOW	KLINE
VERDE GREEN	CAN LOW
BIANCO WHYTE	ICAN HIGH
GRIGIO GREY	POL4 BOOT
BLU BLUE	POL5 CNF1
VIOLA/GRIGIO PURPLE/GREY	TENSIONE PROG. PROG. VOLTAGE
MARRONE GREY	RESET



ECU CONNECTOR

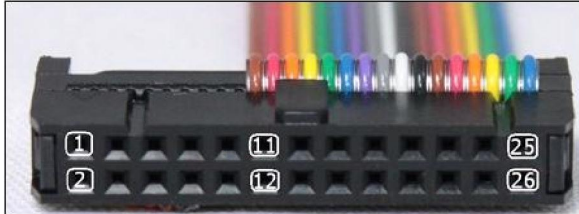
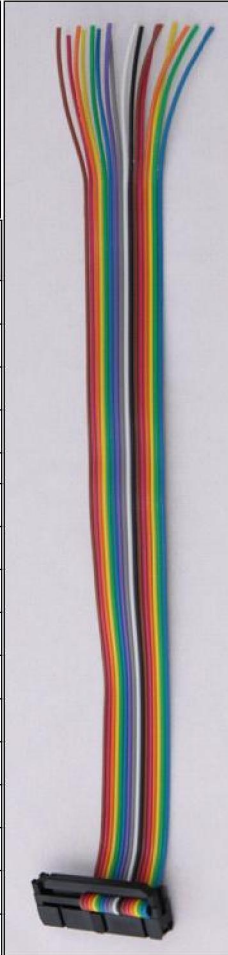


To the pin 3,27,34 you can connect both wires red and orange, they both have 12 Volt signal.

MARELLI 8TDF MPC5553 FAL

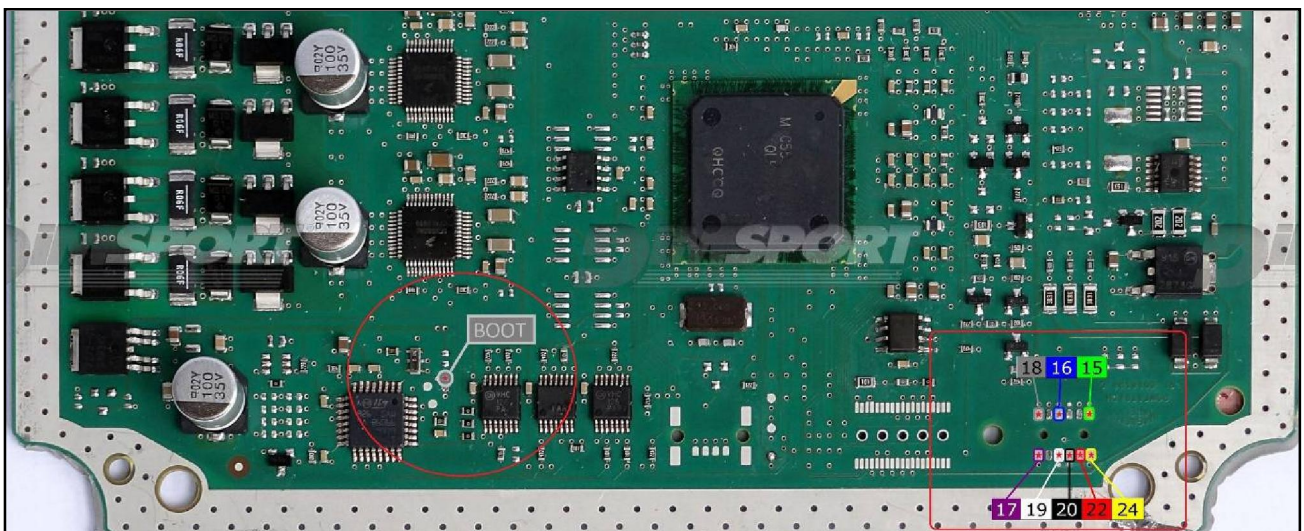
J-TAG LOOSE WIRES CONNECTION

Connect the F34NTF53 wiring as explained here below :

Pin	Colore Color
11	Non usato Not used
12	Non usato Not used
13	Non usato Not used
14	Non usato Not used
15	GND
16	Blu Blue
17	Viola Violet
18	Grigio Grey
19	Bianco White
20	Nero Black
21	Marrone Brown
22	Rosso Red
23	Non usato Not used
24	Giallo Yellow
25	Non usato Not used
26	Non usato Not used

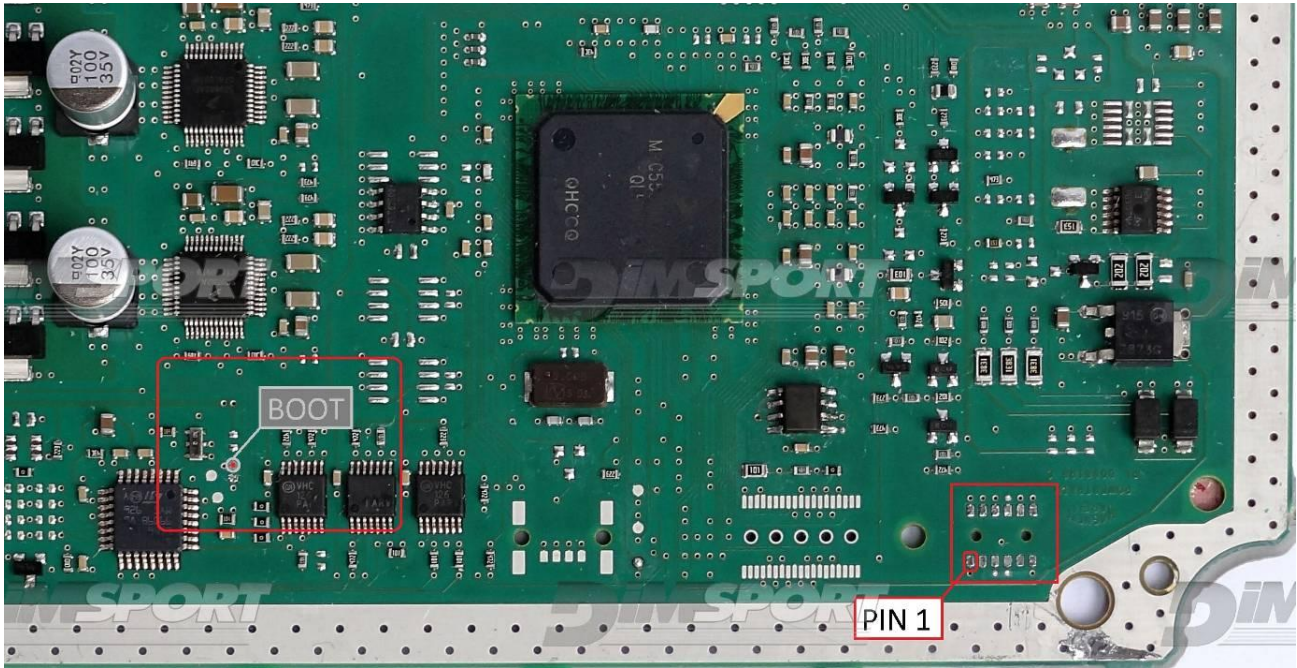
Solder the wires by paying attention NOT to short-circuit the signals of the wires. Moreover it is necessary to connect the grey wire of the cable F32GN037C to the BOOT pad as displayed in the following picture.



MARELLI 8TDF MPC553 FAL

DIMA CONNECTION

JTAG communication pads are placed under the microprocessor on the right corner. Moreover it is necessary to connect the grey wire of the cable F32GN037C to the BOOT pad as displayed in the following picture.



Use the F34DM012 DIMA probe checking the PIN1 position on the ECU board.

