

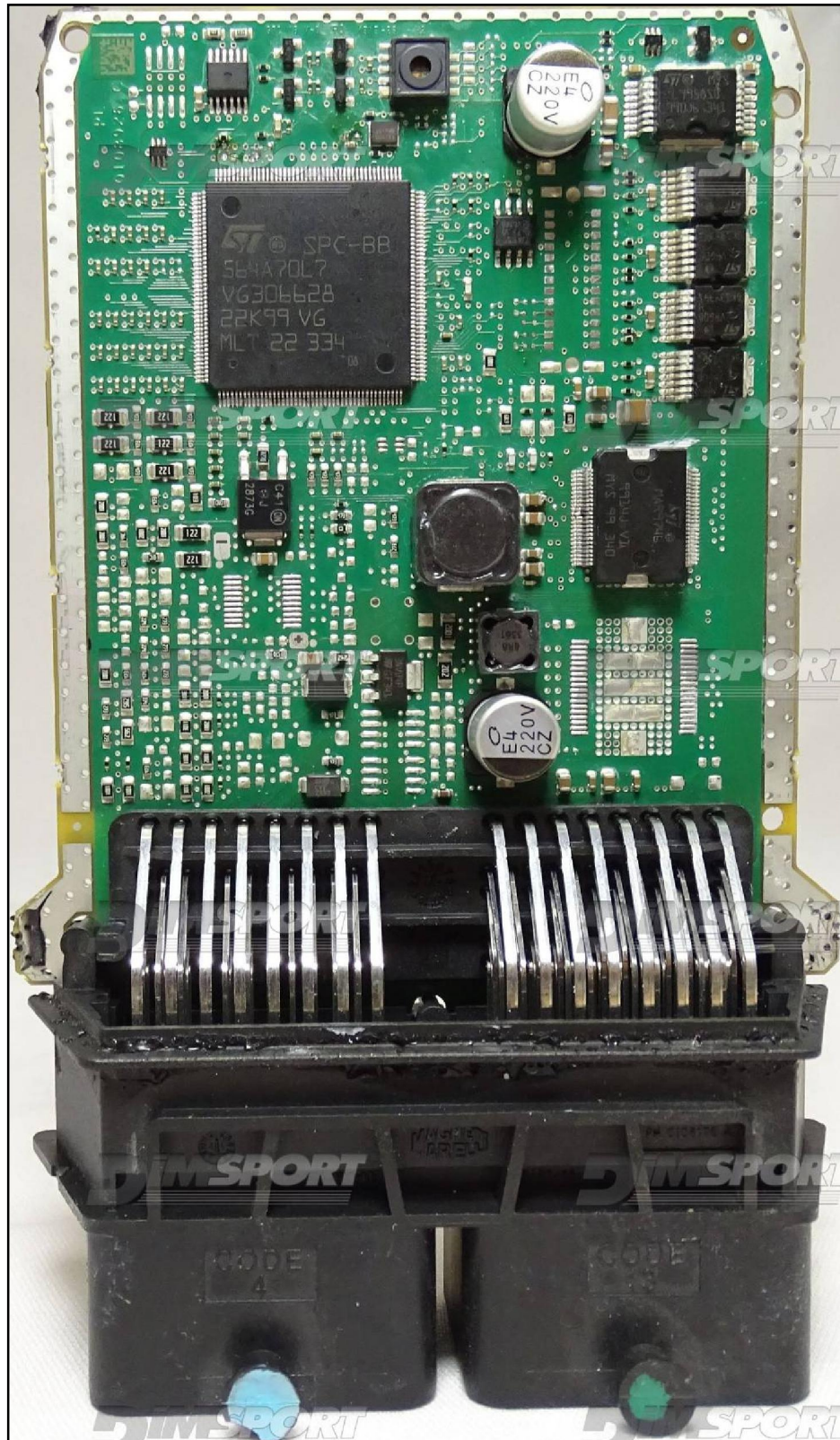
MARELLI 9GF FCA

plugin 726



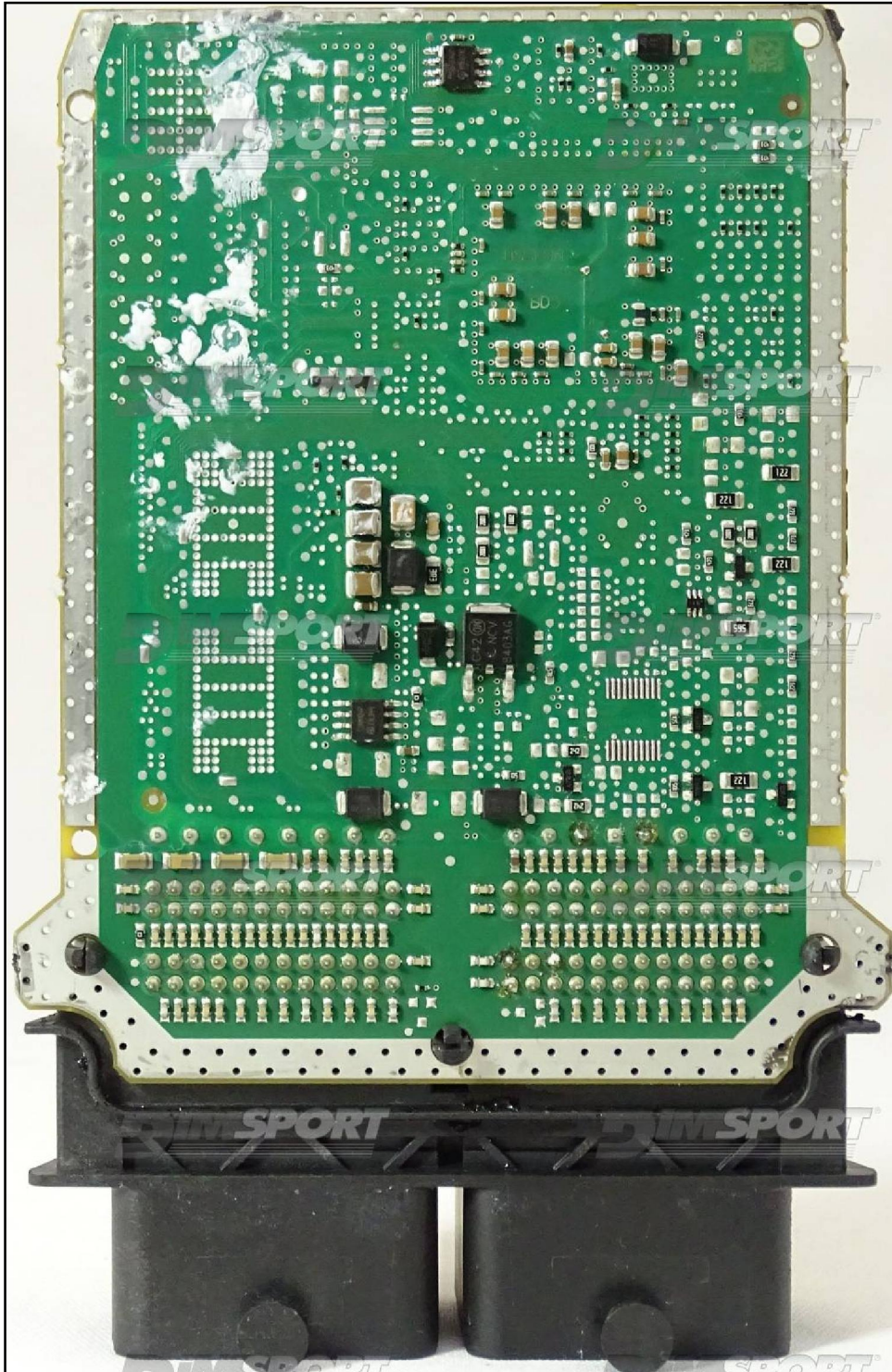
MARELLI 9GF FCA

Microprocessor side



MARELLI 9GF FCA

Microprocessor's opposite side



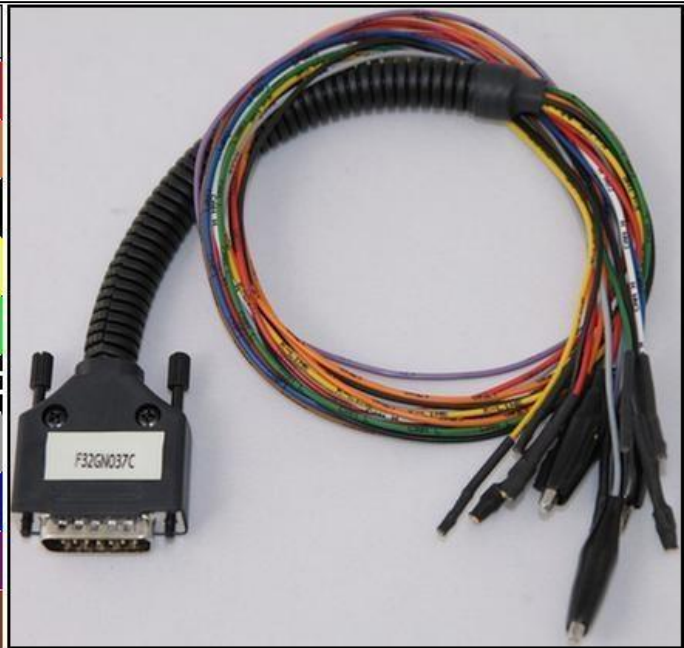
MARELLI 9GF FCA

DIRECT CONNECTION

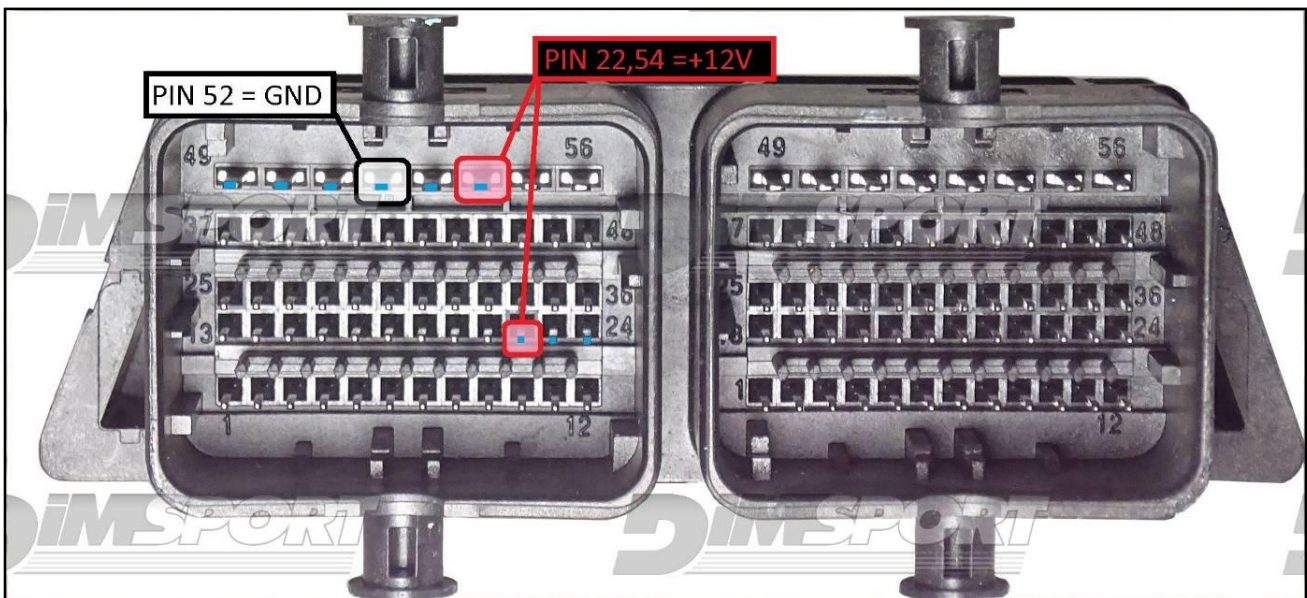
In order to connect to the ECU use the CABLE F32GN037C.

Make sure that the POWER led (red) on Trasdata is ON. These connections are required for all the connection approaches: loose wires and metal positioning frame adapter.

COLORE FILO WIRE COLOUR	DESCRIZIONE DESCRIPTION
ROSSO RED	POSITIVO DIRETTO POWER BATTERY
ARANCIO ORANGE	POSITIVO SOTTO QUADRO POWER SWITCH ON
NERO BLACK	MASSA GND
GIALLO YELLOW	KLINE
VERDE GREEN	CAN LOW
BIANCO WHITE	CAN HIGH
GRIGIO GREY	POL4 BOOT
BLU BLUE	POL5 CNF1
VIOLA/GRIGIO PURPLE/GREY	TENSIONE PROG. PROG. VOLTAGE
MARRONE BROWN	RESET



ECU CONNECTOR



MARELLI 9GF FCA

J-TAG LOOSE WIRES CONNECTION

Connect the cable F34NTF53 as shown here



Pin	Colore Color
11	Non usato Not used
12	Non usato Not used
13	Non usato Not used
14	Non usato Not used
15	Verde / Green
16	Blu Blue
17	Non usato Not used
18	Grigio Grey
19	Bianco White
20	Nero Black
21	Non usato Not used
22	Rosso Red
23	Non usato Not used
24	Giallo Yellow
25	Non usato Not used
26	Non usato Not used

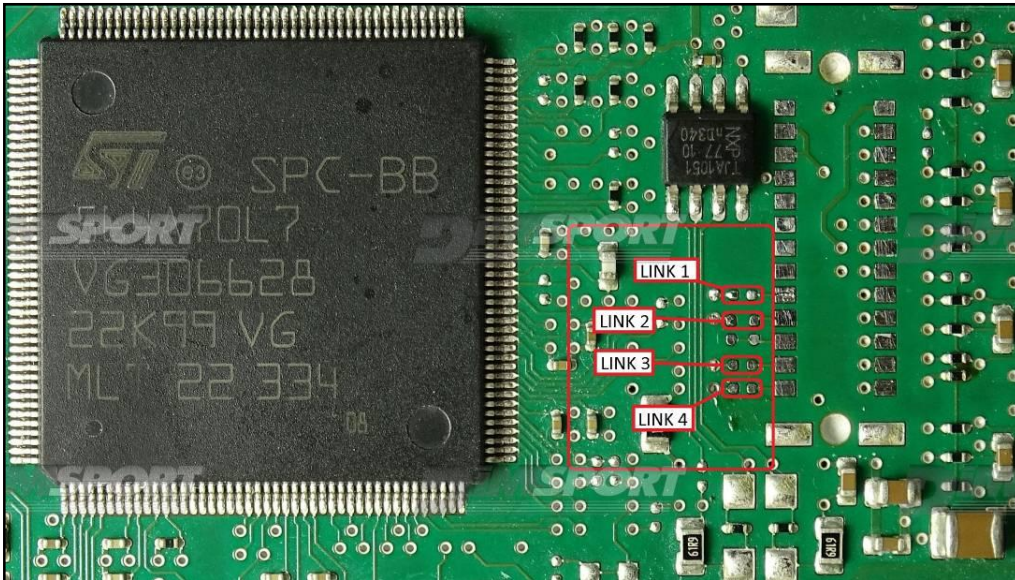


MARELLI 9GF FCA

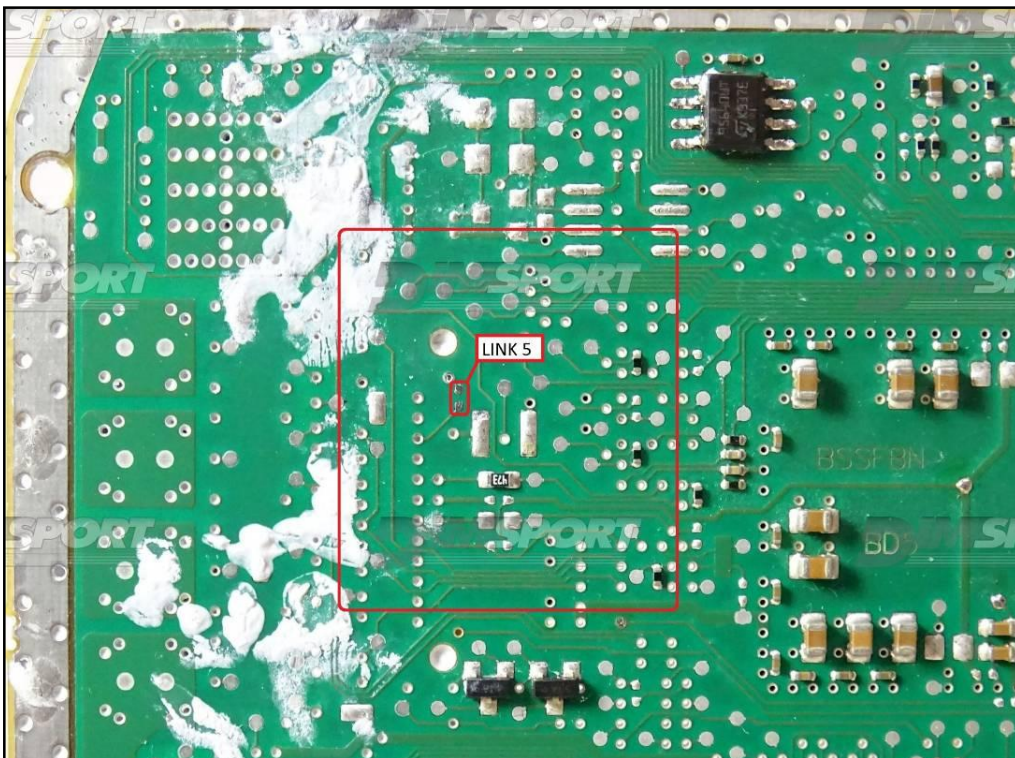
Warning : to enable the J-TAG communication it is necessary to perform the 5 short-circuits LINKS as displayed in the following pictures.

The ECU can be placed back in the vehicle without removing the short-circuits LINK

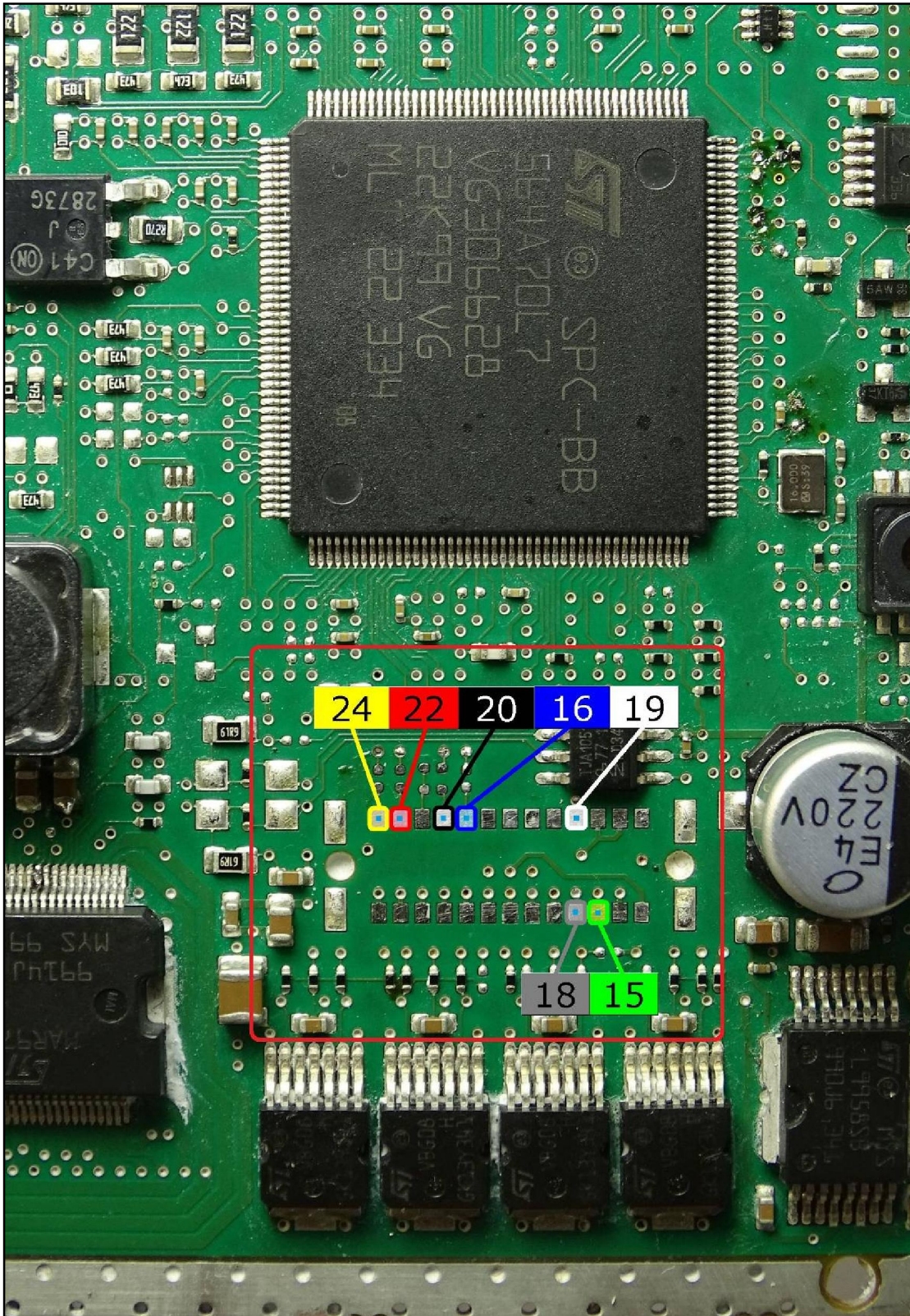
Microprocessor side



Microprocessor's opposite side



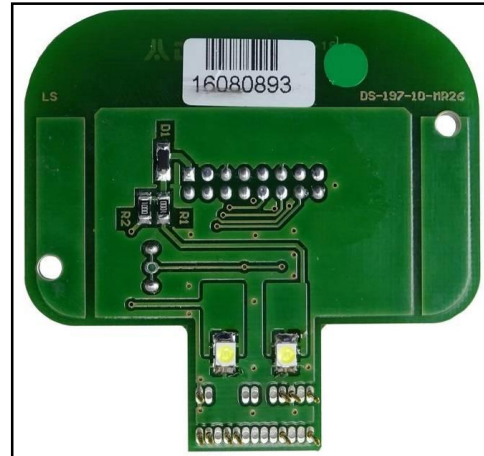
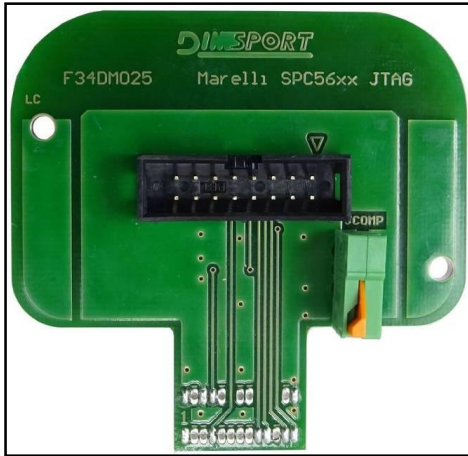
MARELLI 9GF FCA



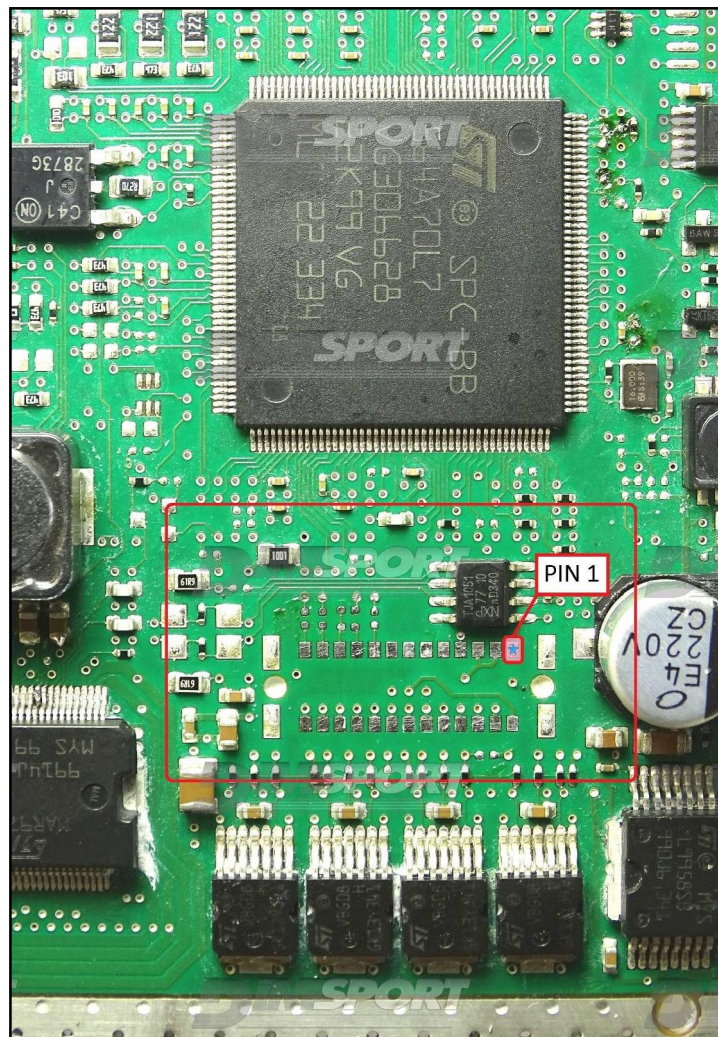
MARELLI 9GF FCA

METAL POSITIONING FRAME CONNECTION

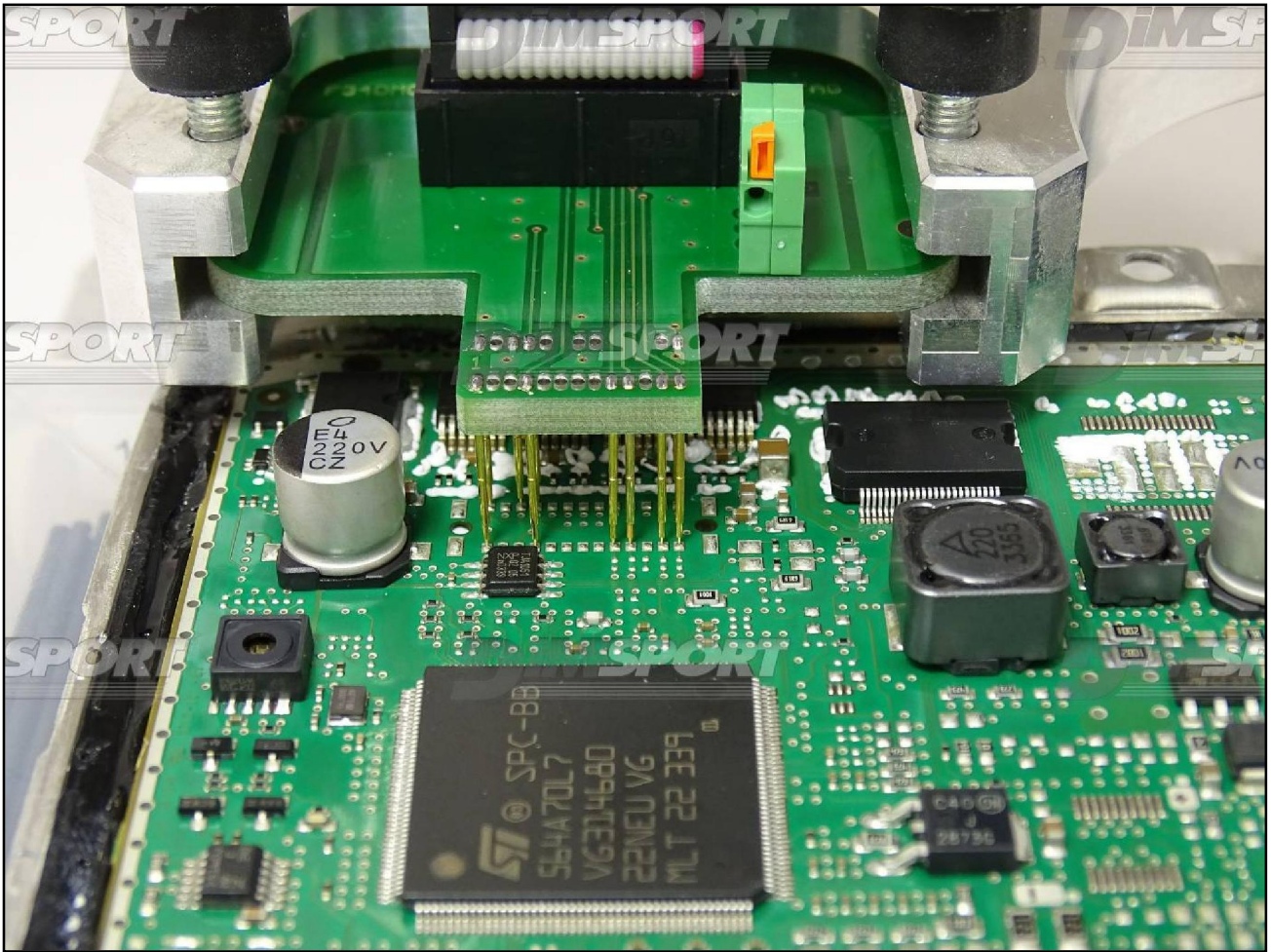
For the metal positioning frame connection is required the F34DM025 adapter.



JTAG pads for the communication are placed below the microprocessor, for this connection the bridges (LINK) shown at pg. 6 are required. Check the PIN 1 position for a correct orientation of the adapter F34DM025.



MARELLI 9GF FCA



MARELLI 9GF FCA

