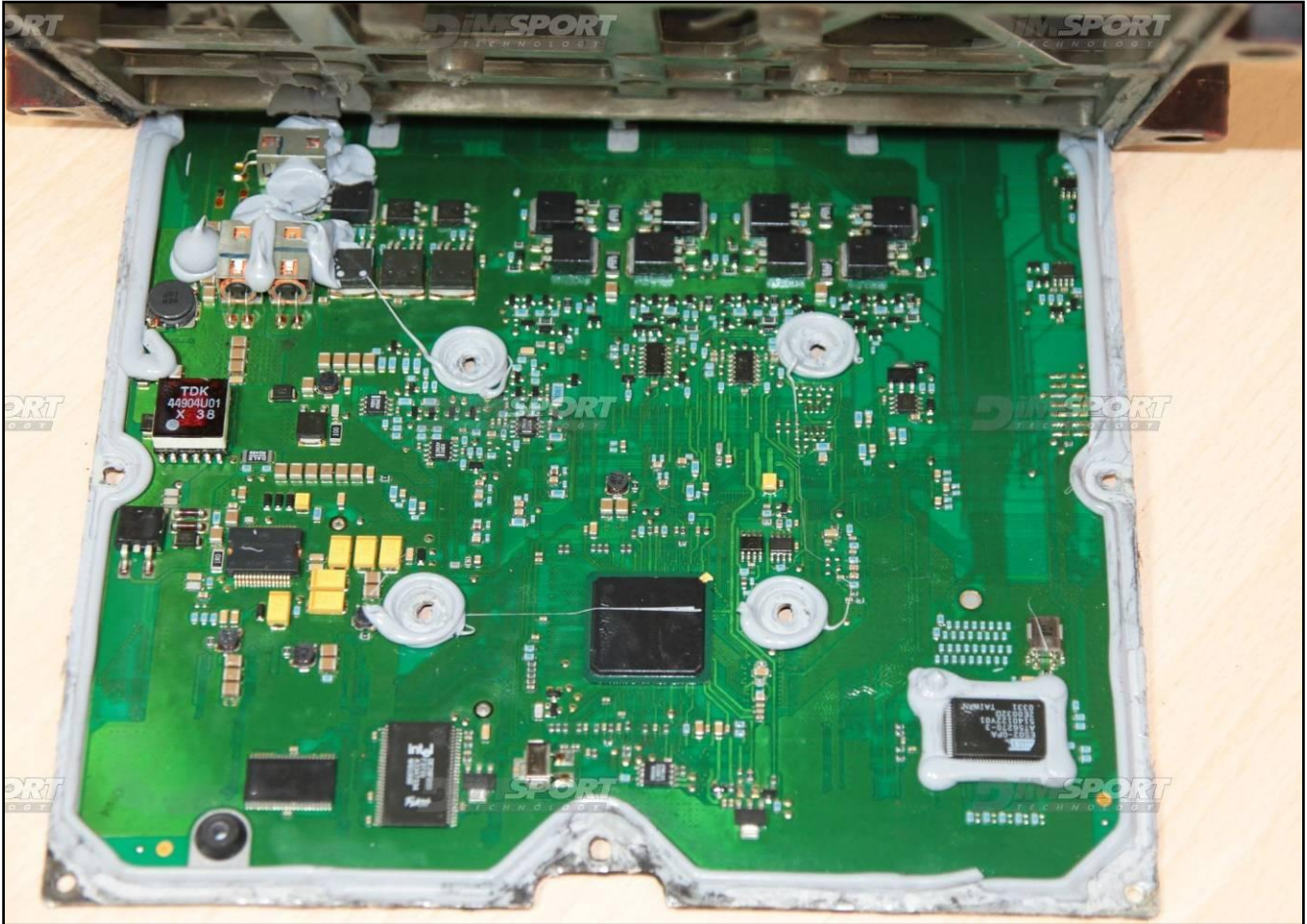


MOTOROLA CM870

plugin 400,431,565

Warning: in order to get access to the BDM lay-by pins it is necessary to open the ECU side where there are no connectors. Lay-by pins are placed on the right side of the ECU, on the right of the microprocessor.

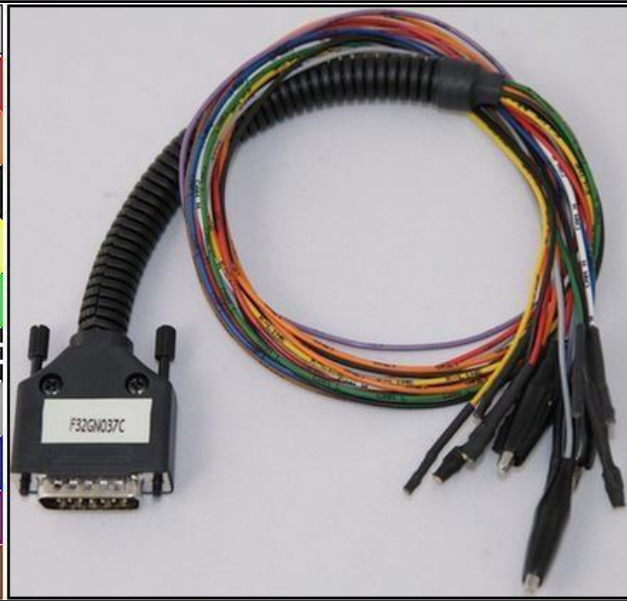


MOTOROLA CM870

DIRECT CONNECTION

In order to connect to the ECU use the CABLE F32GN037C/D.
Make sure that the POWER led (red) on Trasdata is ON.

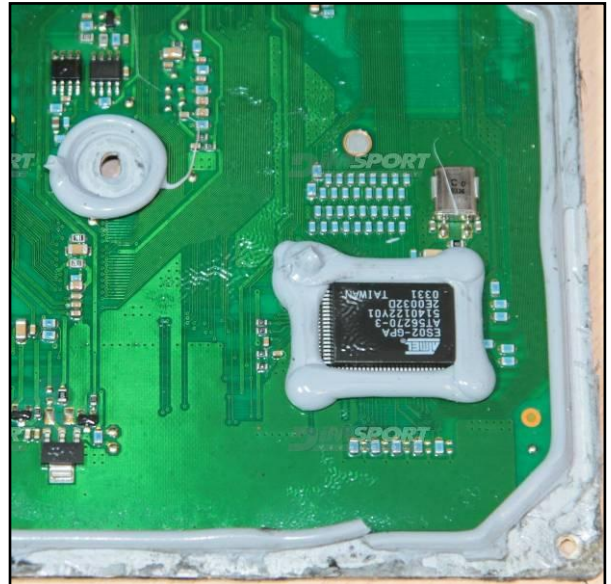
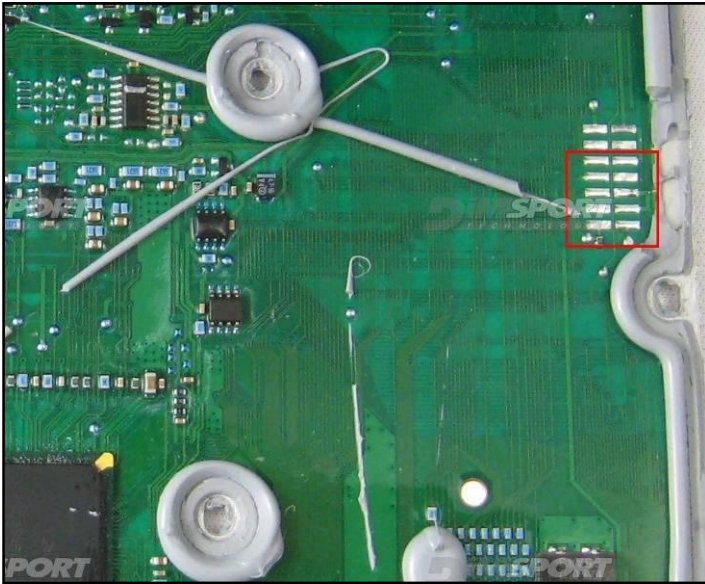
COLORE FILO WIRE COLOUR		DESCRIZIONE DESCRIPTION
ROSSO RED		POSITIVO DIRETTO POWER BATTERY
ARANCIO ORANGE		POSITIVO SOTTO QUADRO POWER SWITCH ON
NERO BLACK		MASSA GND
GIALLO YELLOW		KLINE
VERDE GREEN		CAN LOW
BIANCO WHITE		CAN HIGH
GRIGIO GREY		POL4 BOOT
BLU BLUE		POL5 CNF1
VIOLA/GRIGIO PURPLE/GREY		TENSIONE PROG. PROG. VOLTAGE
MARRONE BROWN		RESET



MOTOROLA CM870

F34NTA03 adapter CONNECTION

Leave the first 2 pin free, the adapter must be lined up to the external edge of the ECU.



In order to perform the BDM reading it is necessary to make a little bridge on the quartz as shown in the following picture. Remove the bridge from the quartz at the end of the procedure or before restoring the ECU on the vehicle.

