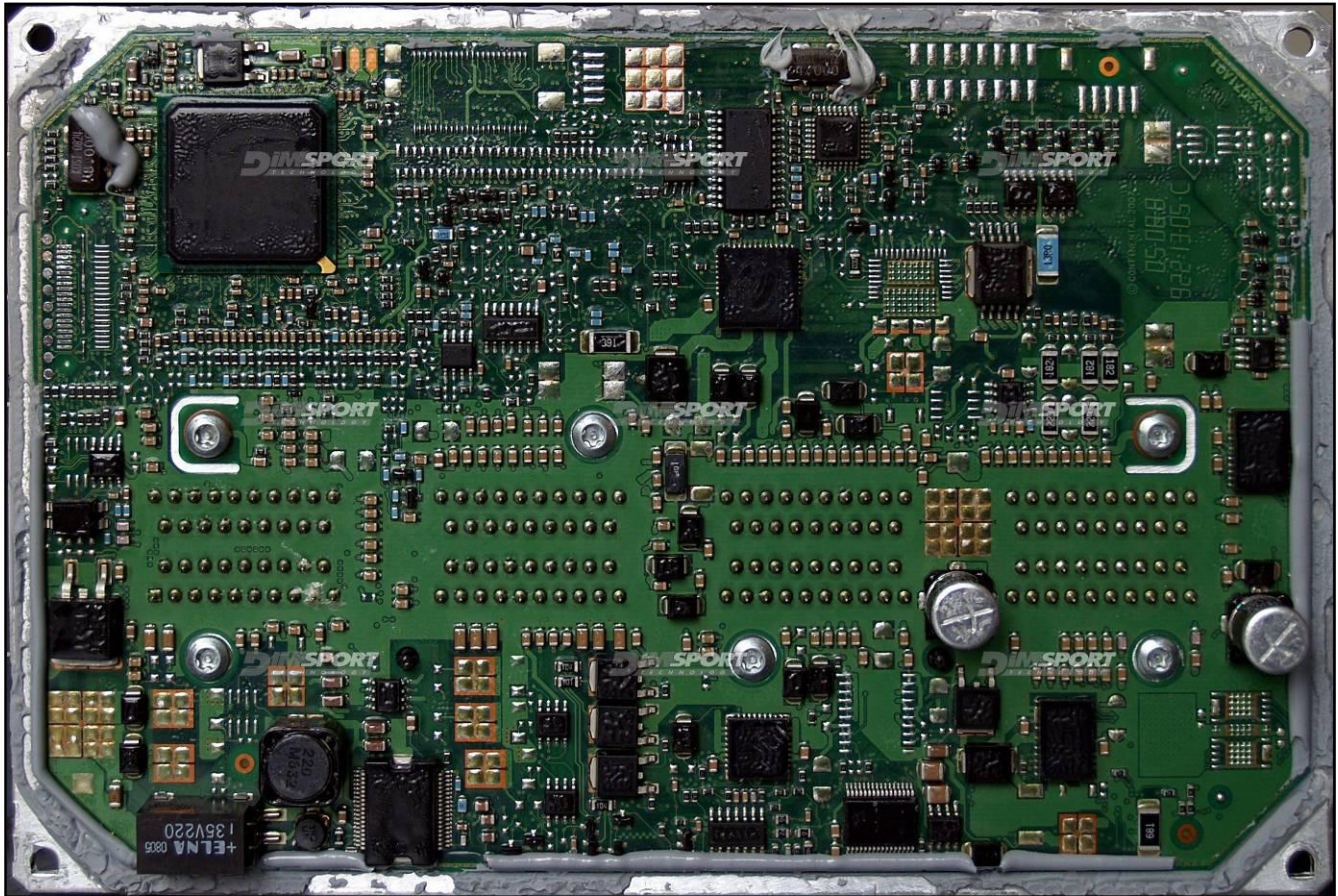


MOTOROLA NGC5 CHRYSLER

plugin 372-641-860-870



DIRECT CONNECTION

In order to connect to the ECU use the CABLE F32GN037C/D.
Make sure that the POWER led (red) on Trasdata is ON.

COLORE FILO WIRE COLOUR	DESCRIZIONE DESCRIPTION
ROSSO RED	POSITIVO DIRETTO POWER BATTERY
ARANCIO ORANGE	POSITIVO SOTTO QUADRO POWER SWITCH ON
NERO BLACK	MASSA GND
GIALLO YELLOW	KLINE
VERDE GREEN	CAN LOW
BIANCO WHITE	CAN HIGH
GRIGIO GREY	POL4 BOOT
BLU BLUE	POL5 CNF1
VIOLA/GRIGIO PURPLE/GREY	TENSIONE PROG. PROG. VOLTAGE
MARRONE BROWN	RESET



MOTOROLA NGC5 CHRYSLER

ECU CONNECTOR



To pin A10,A11,A12,A29 it is possible to connect RED and ORANGE wires, they both are 12V.

J-TAG FREE WIRING CONNECTION

Connect the F34NTF53 wiring as explained here below :

Pin	Colore Colour
11	Non usato Not used
12	Non usato Not used
13	Non usato Not used
14	Non usato Not used
15	Non usato Not used
16	Blu Blue
17	Viola Violet
18	Grigio Grey
19	Bianco White
20	Nero Black
21	Marrone Brown
22	Rosso Red
23	Non usato Not used
24	Giallo Yellow
25	Non usato Not used
26	Non usato Not used

MOTOROLA NGC5 CHRYSLER

WARNING: solder the wires by paying attention NOT to short-circuit the signals of the wires

