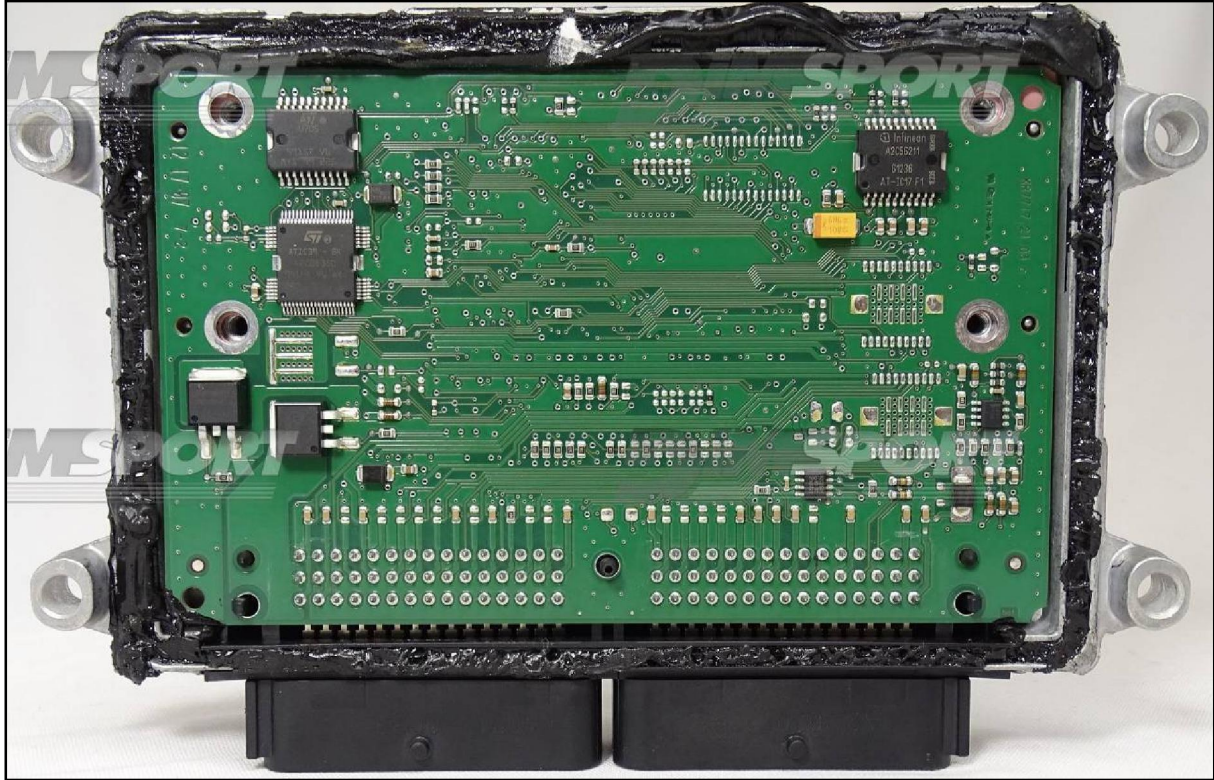


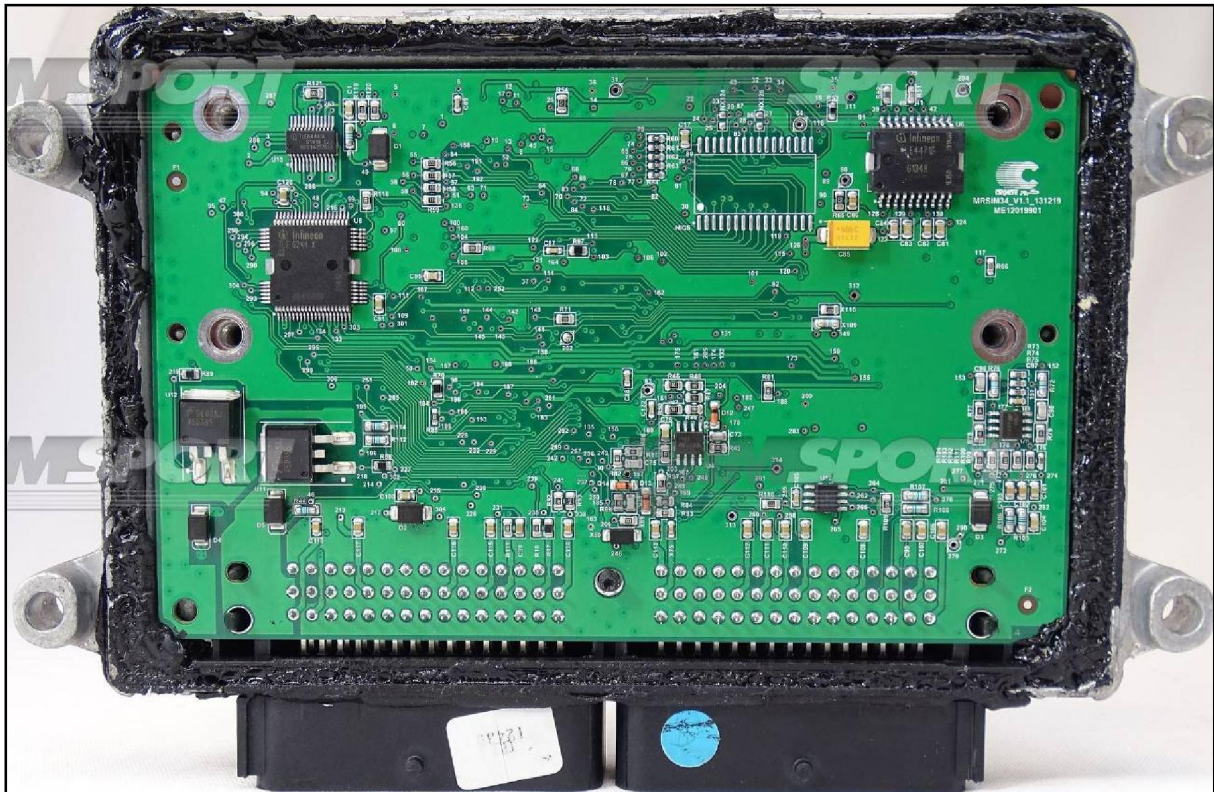
PLUGIN 541 : NEW TRASDATA



TYPE 01 : PSOP29F400BB



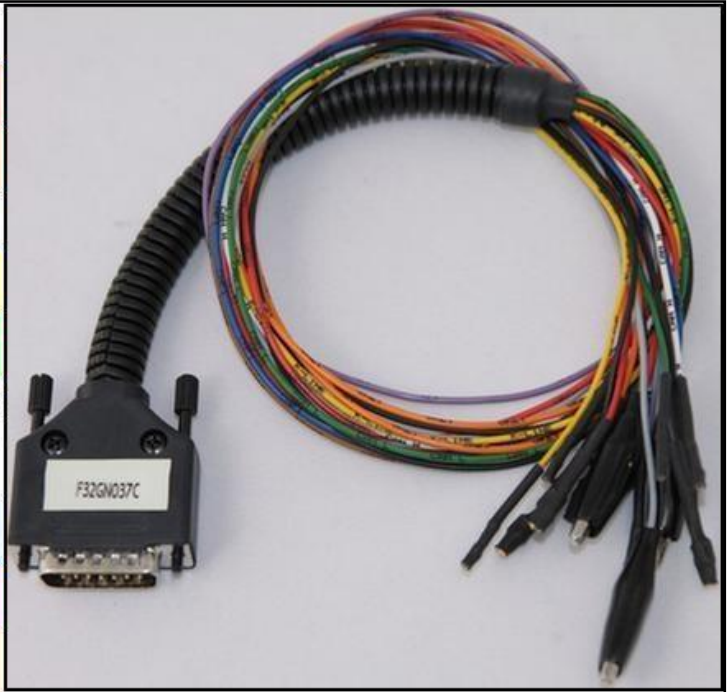
TYPE 02 : TSOP29F400BB



DIRECT CONNECTION

In order to connect to the ECU use the CABLE F32GN037C.
 Make sure that the POWER led (red) on NEW TRASDATA is ON.

COLORE FILO WIRE COLOUR	DESCRIZIONE DESCRIPTION
ROSSO RED	POSITIVO DIRETTO POWER BATTERY
ARANCIO ORANGE	POSITIVO SOTTO QUADRO POWER SWITCH ON
NERO BLACK	MASSA GND
GIALLO YELLOW	KLINE
VERDE GREEN	CAN LOW
BIANCO WHITE	CAN HIGH
GRIGIO GREY	POL4 BOOT
BLU BLUE	POL5 CNF1
VIOLA/GRIGIO PURPLE/GREY	TENSIONE PROG. PROG. VOLTAGE
MARRONE BROWN	RESET



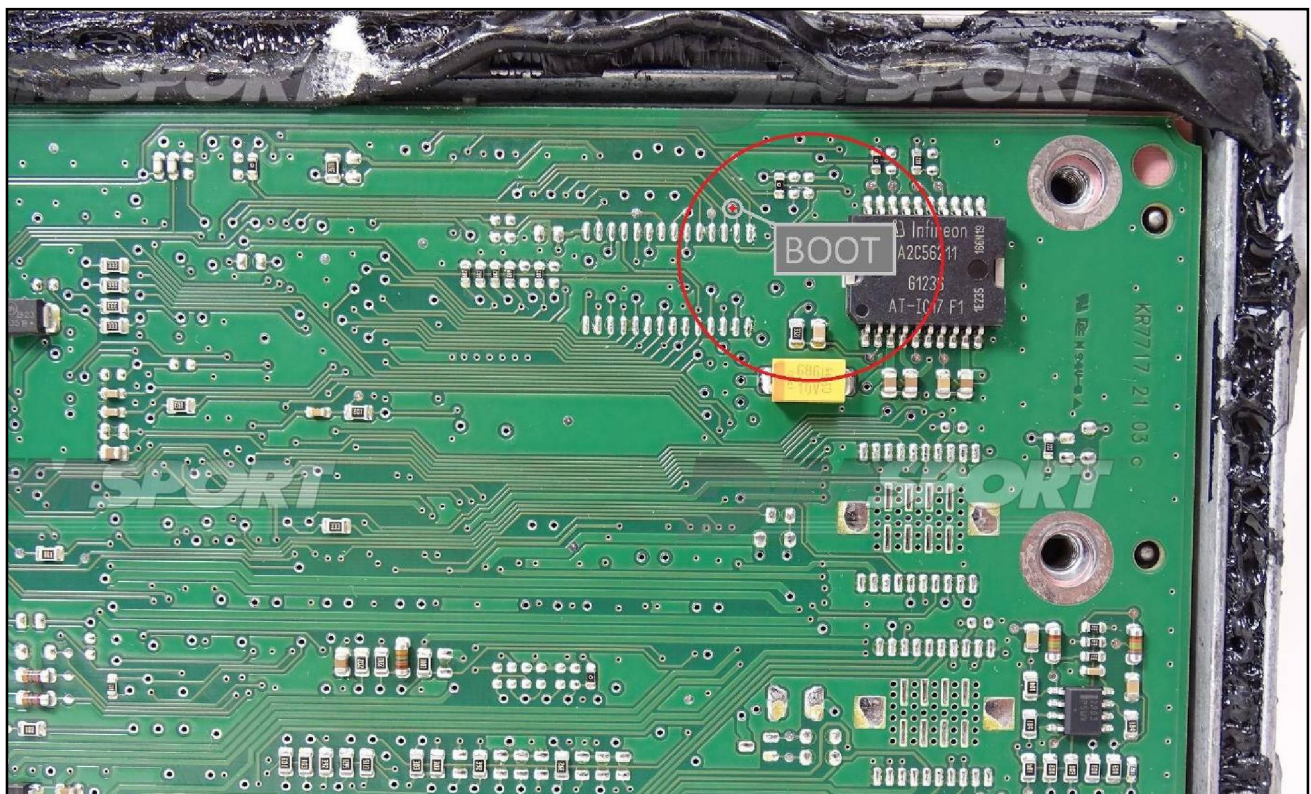
ECU CONNECTOR TYPE 01 & TYPE 02



TYPE 01 BOOT CONNECTION

Connect the grey wire of F32GN037C wiring as indicated here below:

COLORE FILO WIRE COULOR	DESCRIZIONE DESCRIPTION
GRIGIO GREY	POL4 BOOT



TYPE 02 BOOT CONNECTION

Important: on this kind of ECU you need to wait at least 1 minute between each of the ID, READING and WRITING operations. The ECU board is provided with capacitors requiring longer times (if compared to the standard ECUs) to dissipate the electricity.

Connect the grey wire of F32GN037C wiring as indicated here below:

COLORE FILO WIRE COULOR	DESCRIZIONE DESCRIPTION
GRIGIO GREY	POL4 BOOT

