

PHOENIX L12 JOHNDEERE

**Trasdata**  
plugin 927 - 1105



PHOENIX L12 JOHNDEERE



40931

P/N:  
S/N:

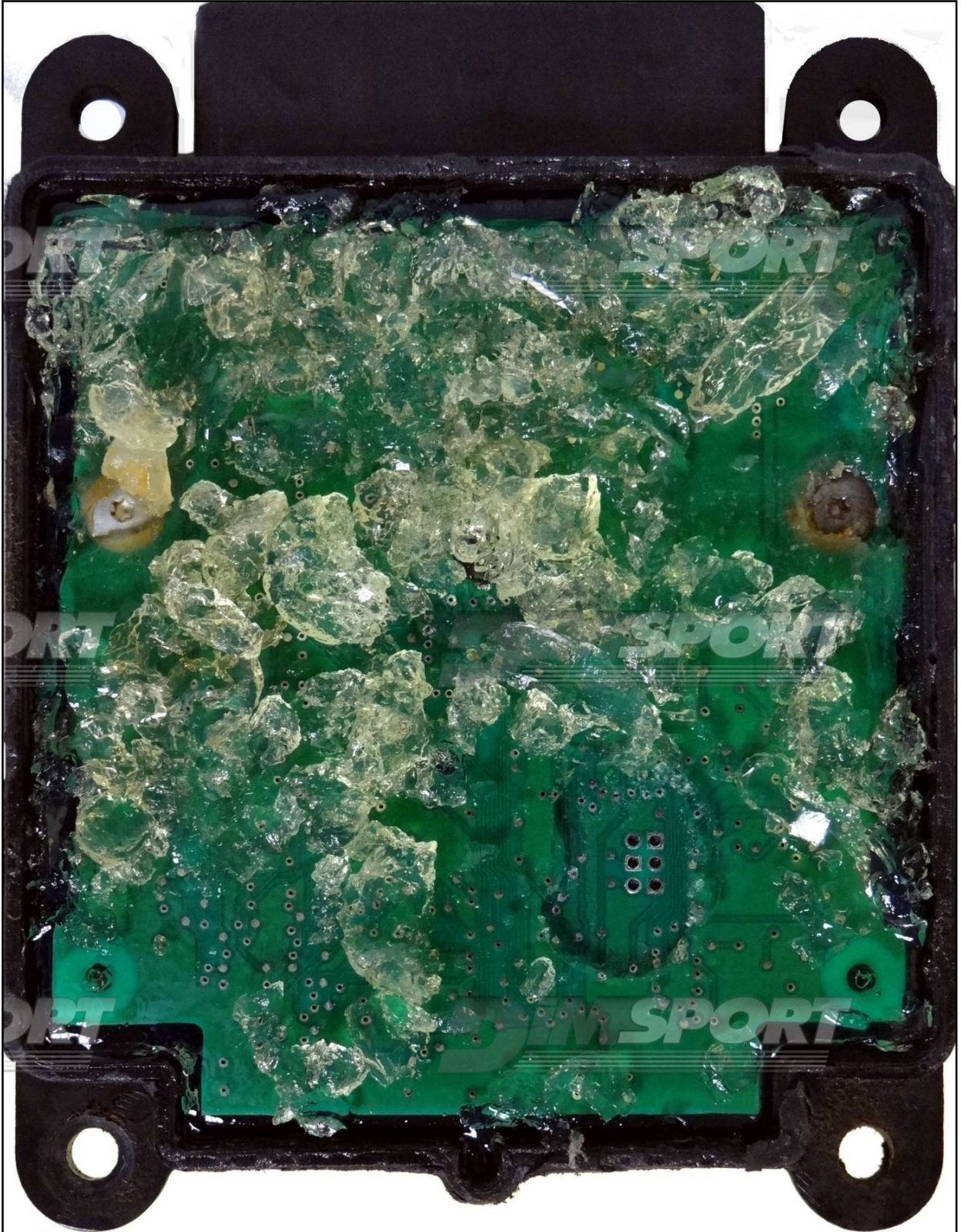
JOHN DEERE  
ENG CNTRL L12 /12V  
RE532627

652116

ASSEMBLED IN USA

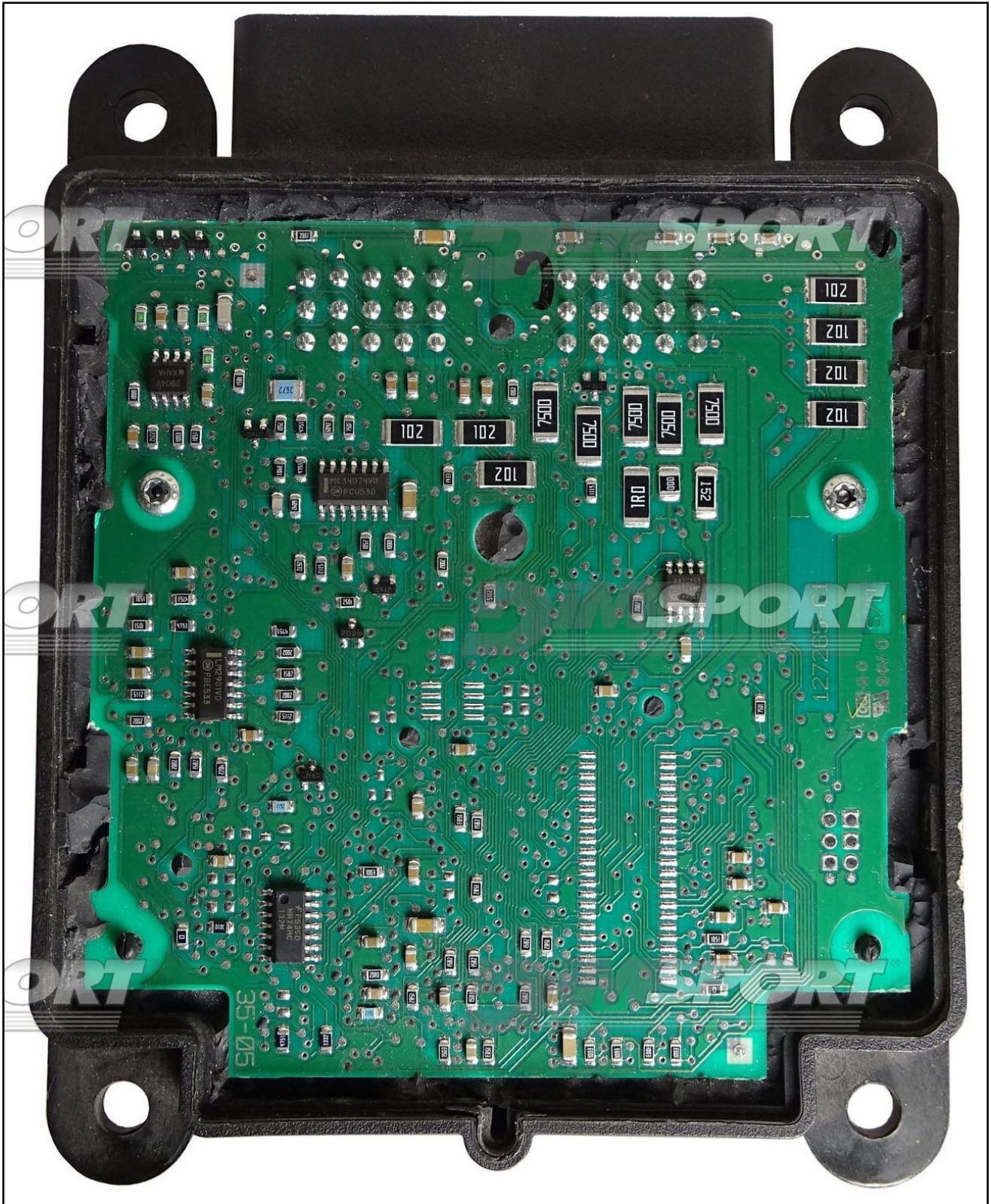
PHOENIX L12 JOHNDEERE

ECU 001



PHOENIX L12 JOHNDEERE

ECU 002

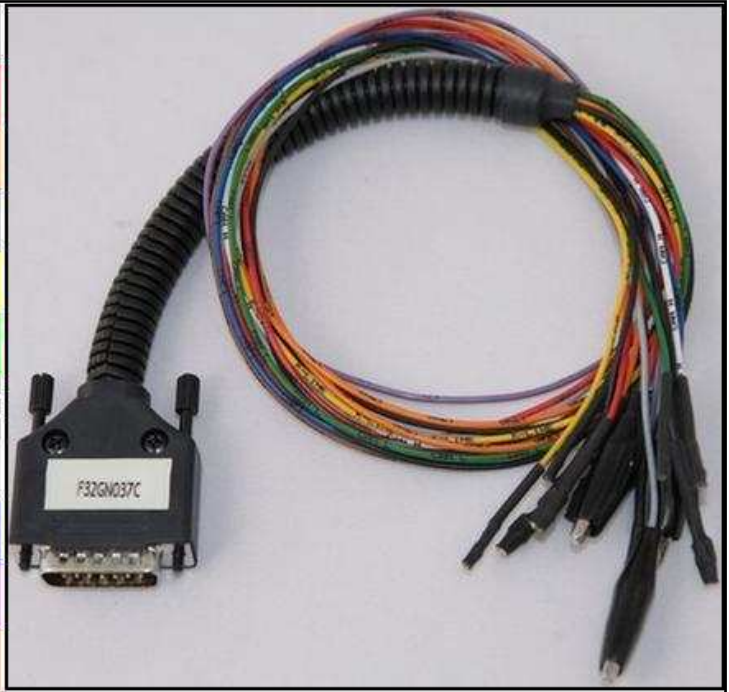


## PHOENIX L12 JOHNDEERE

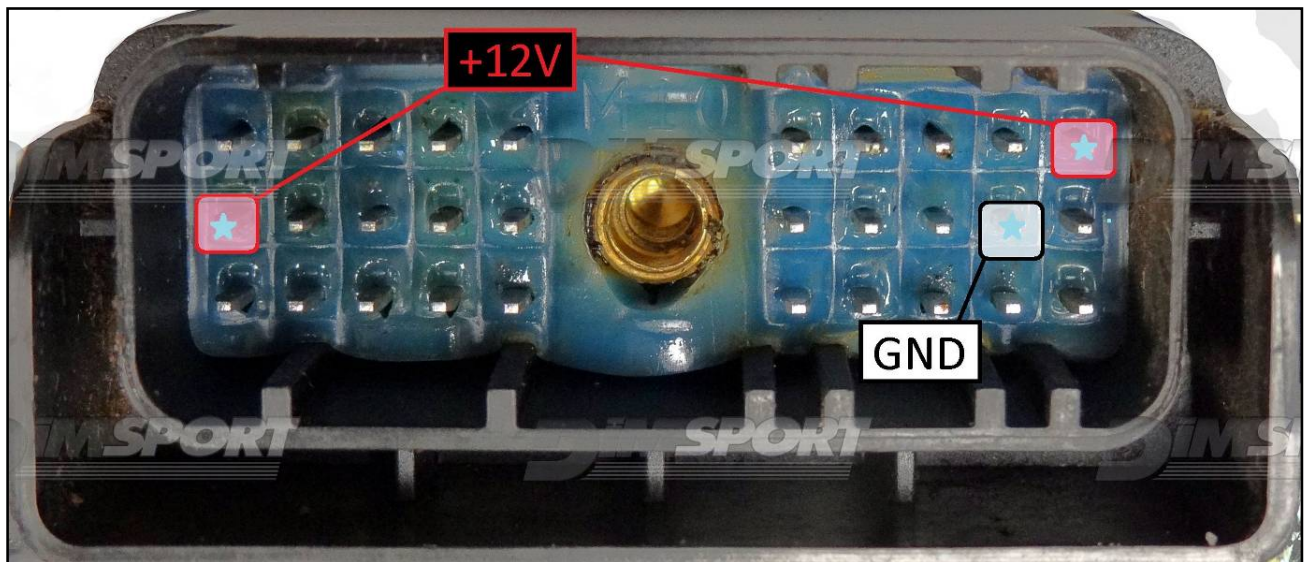
### DIRECT CONNECTION

In order to connect to the ECU use the CABLE F32GN037C/D.  
Make sure that the POWER led (red) on Trasdata is ON.

COLORE FILO WIRE COLOUR	DESCRIZIONE DESCRIPTION
ROSSO RED	POSITIVO DIRETTO POWER BATTERY
ARANCIO ORANGE	POSITIVO SOTTO QUADRO POWER SWITCH ON
NERO BLACK	MASSA GND
GIALLO YELLOW	KLINE
VERDE GREEN	CAN LOW
BIANCO WHITE	CAN HIGH
GRIGIO GREY	POL4 BOOT
BLU BLUE	POL5 CNF1
VIOLA/GRIGIO PURPLE/GREY	TENSIONE PROG. PROG. VOLTAGE
MARRONE BROWN	RESET



### CONNECTOR ECU 001 & ECU 002



## PHOENIX L12 JOHNDEERE

### BOOT DIRECT CONNECTION

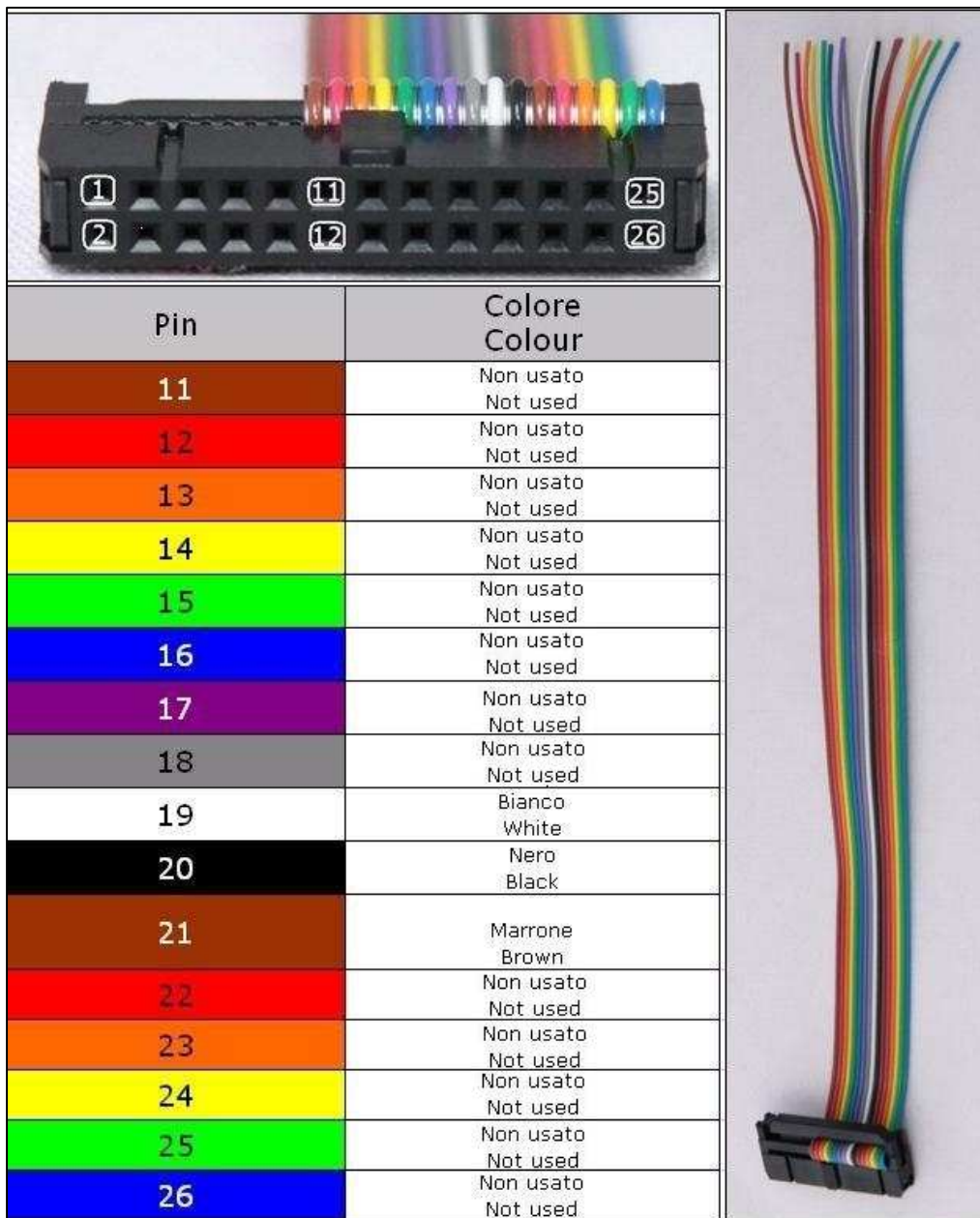
Connect the GREY wire of the cable F32GN037C/D as described here below :

COLORE FILO WIRE COULOR	DESCRIZIONE DESCRIPTION
GRIGIO GREY	POL4 BOOT

### RX & TX & GND CONNECTION

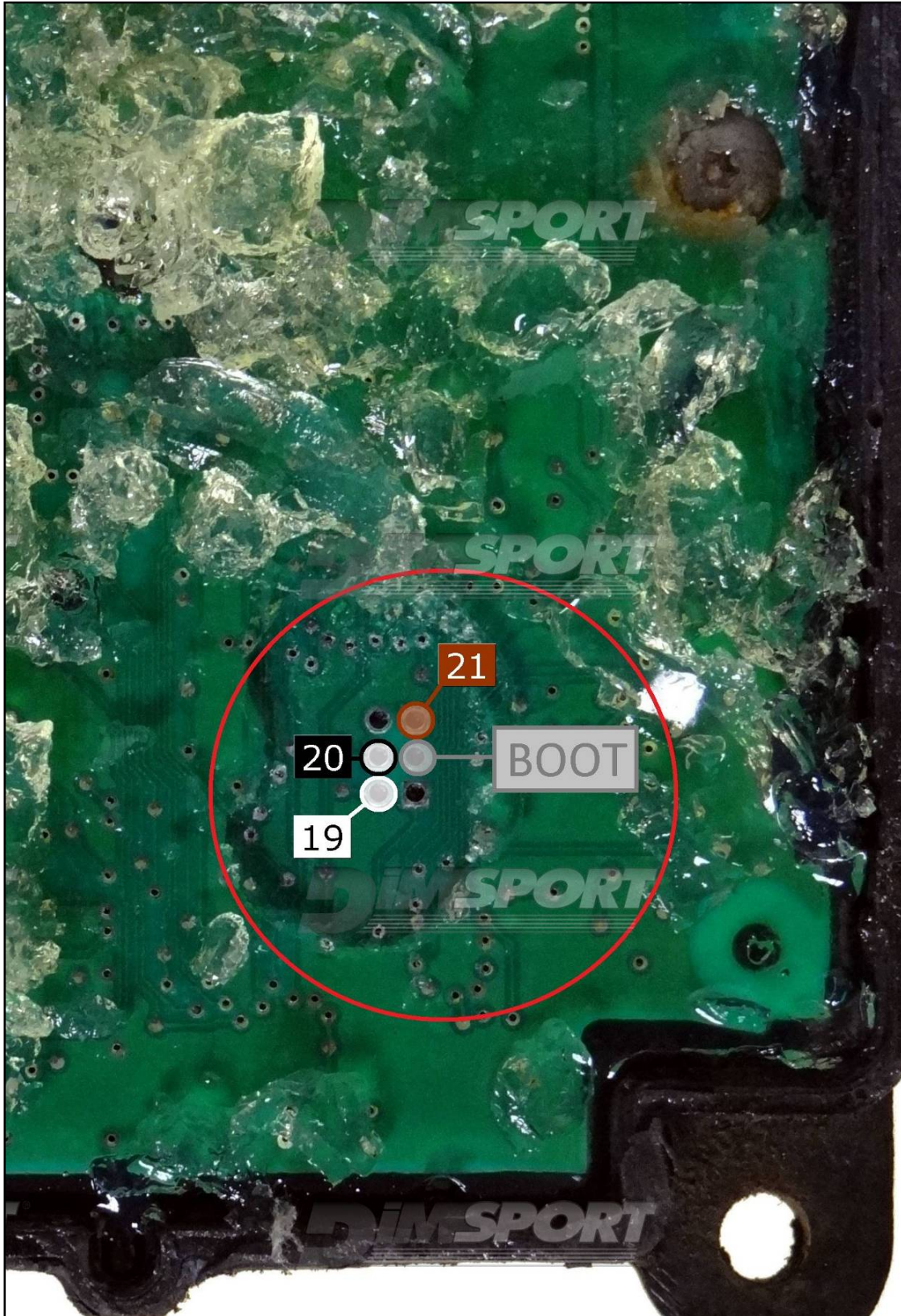
For the RX & TX & GND lines it is necessary to use the flat cable F34NTF53.

Pin	Colore Colour
11	Non usato Not used
12	Non usato Not used
13	Non usato Not used
14	Non usato Not used
15	Non usato Not used
16	Non usato Not used
17	Non usato Not used
18	Non usato Not used
19	Bianco White
20	Nero Black
21	Marrone Brown
22	Non usato Not used
23	Non usato Not used
24	Non usato Not used
25	Non usato Not used
26	Non usato Not used



PHOENIX L12 JOHNDEERE

ECU 001



# PHOENIX L12 JOHNDEERE

## ECU 002

