

SCANIA C007 MPC5554 SCANIA

plugin 1701



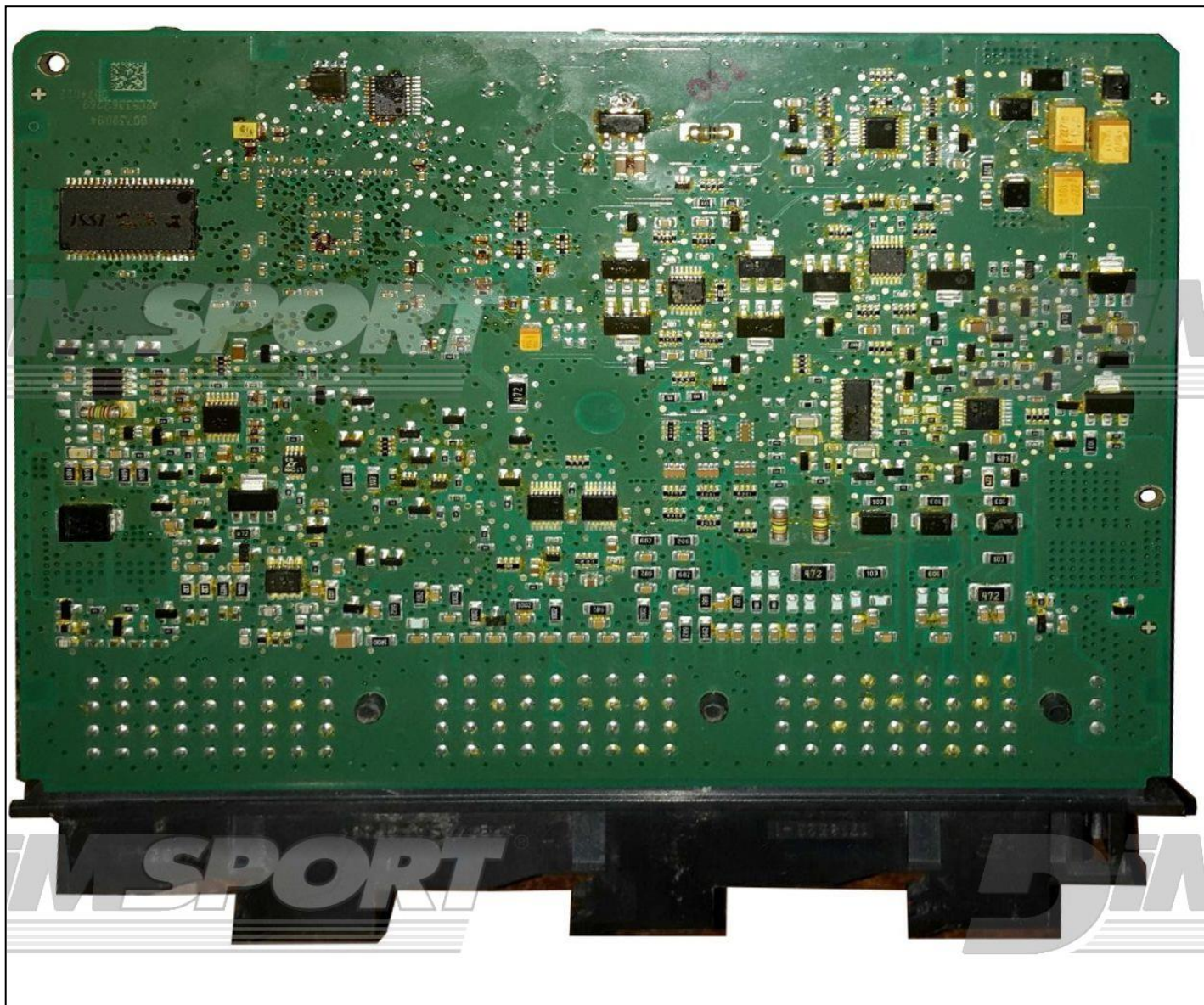
SCANIA C007 MPC5554 SCANIA

MICROPROCESSOR SIDE



SCANIA C007 MPC5554 SCANIA

MICROPROCESSOR OPPOSITE SIDE



SCANIA C007 MPC5554 SCANIA

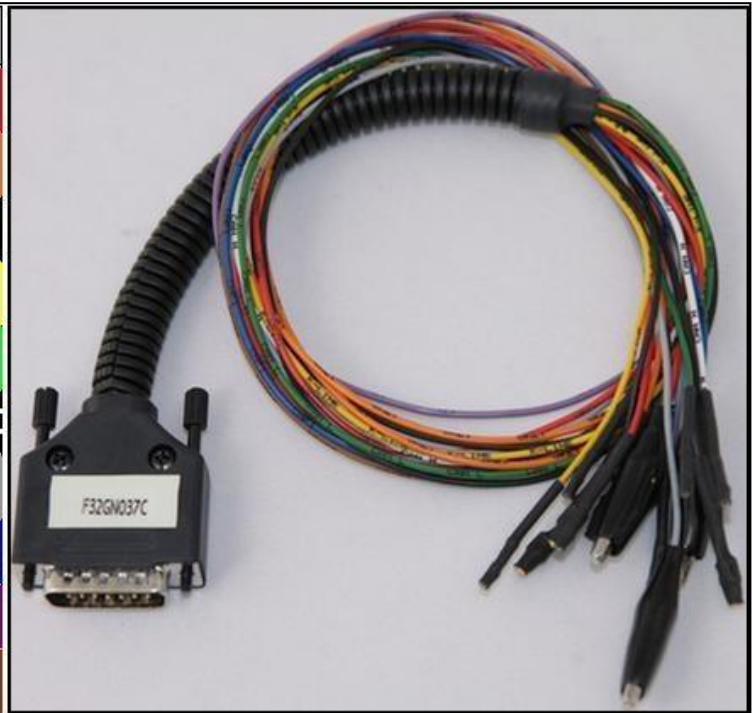
DIRECT CONNECTION

In order to connect to the ECU use the cable F32GN037C/D.

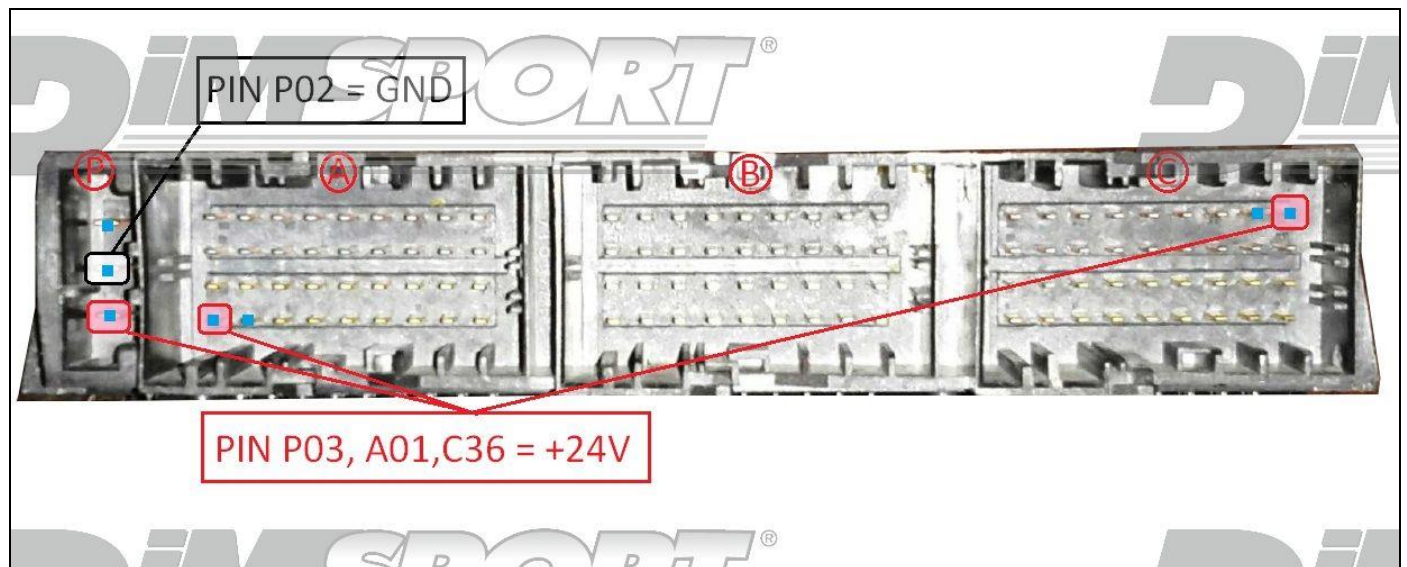
Make sure that the POWER led (red) on Trasdata is ON.

WARNING: the ECU must be powered at 24V.

| COLORE FILO WIRE COLOUR | DESCRIZIONE DESCRIPTION |
|-----------------------------|--|
| ROSSO RED | POSITIVO DIRETTO POWER BATTERY |
| ARANCIO ORANGE | POSITIVO SOTTO QUADRO POWER SWITCH ON |
| NERO BLACK | MASSA GND |
| GIALLO YELLOW | KLINE |
| VERDE GREEN | CAN LOW |
| BIANCO WHITE | CAN HIGH |
| GRIGIO GREY | POL4 BOOT |
| BLU BLUE | POL5 CNF1 |
| VIOLA/GRIGIO PURPLE/GREY | TENSIONE PROG. PROG. VOLTAGE |
| MARRONE BROWN | RESET |





ECU CONNECTOR



SCANIA C007 MPC5554 SCANIA

J-TAG LOOSE WIRE CONNECTION

Connect the flat cable F34NTF53 as shown here below:



| Pin | Colore Colour |
|-----|-----------------------|
| 11 | Non usato Not used |
| 12 | Non usato Not used |
| 13 | Non usato Not used |
| 14 | Non usato Not used |
| 15 | Non usato Not used |
| 16 | Blu Blue |
| 17 | Viola Violet |
| 18 | Grigio Grey |
| 19 | Bianco White |
| 20 | Nero Black |
| 21 | Marrone Brown |
| 22 | Rosso Red |
| 23 | Non usato Not used |
| 24 | Giallo Yellow |
| 25 | Non usato Not used |
| 26 | Non usato Not used |

SCANIA C007 MPC5554 SCANIA

For a correct soldering procedure clean very well the soldering lay-by pins from the plastic film. We suggest you to use fine grit glass-paper smoothing by gentle pressure on the connection lay by pins

MICROPROCESSOR OPPOSITE SIDE

Connect the wires without creating any short-circuit among the pads.

