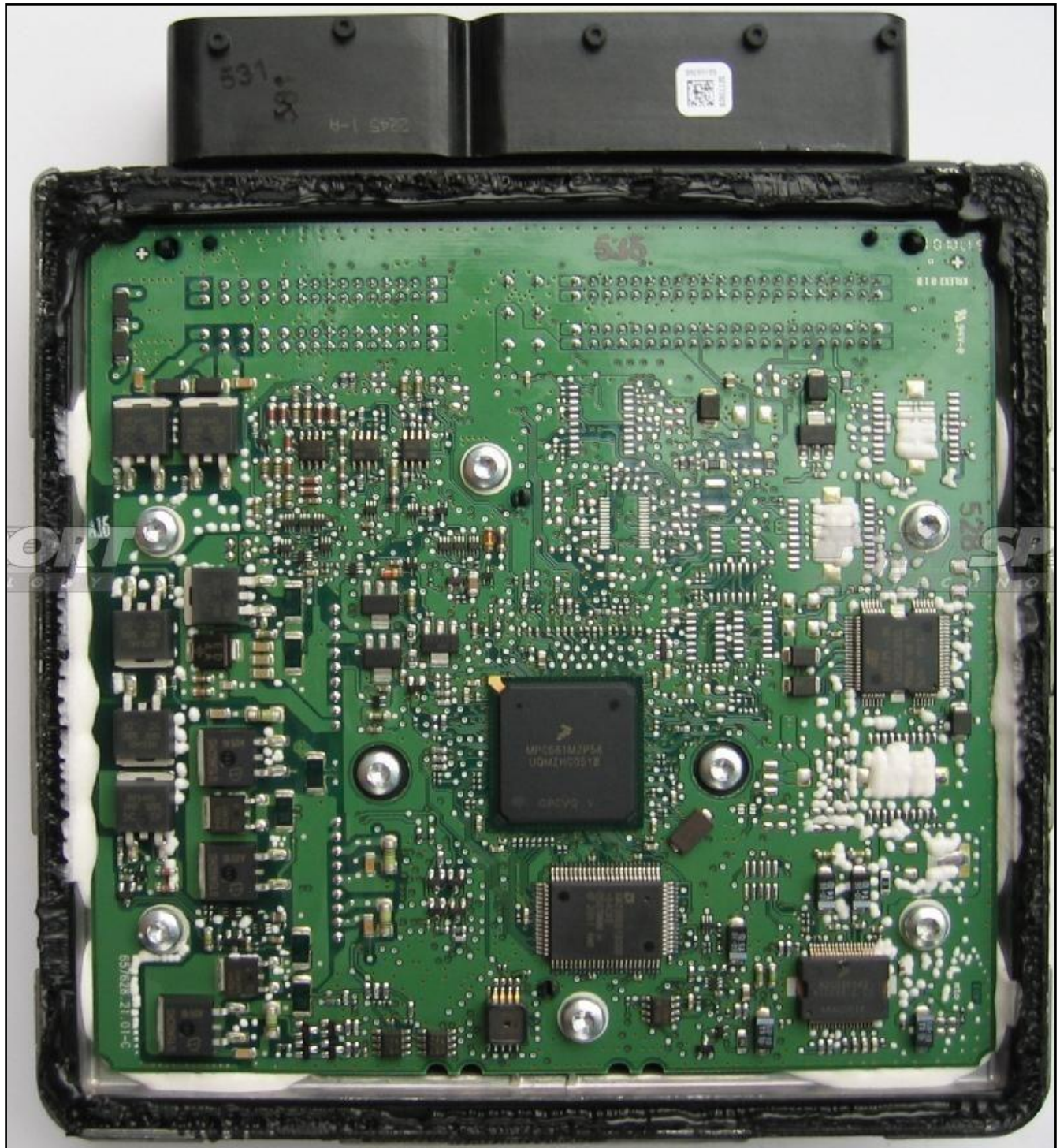


# SIMOS PPD1X VAG

## plugin 075

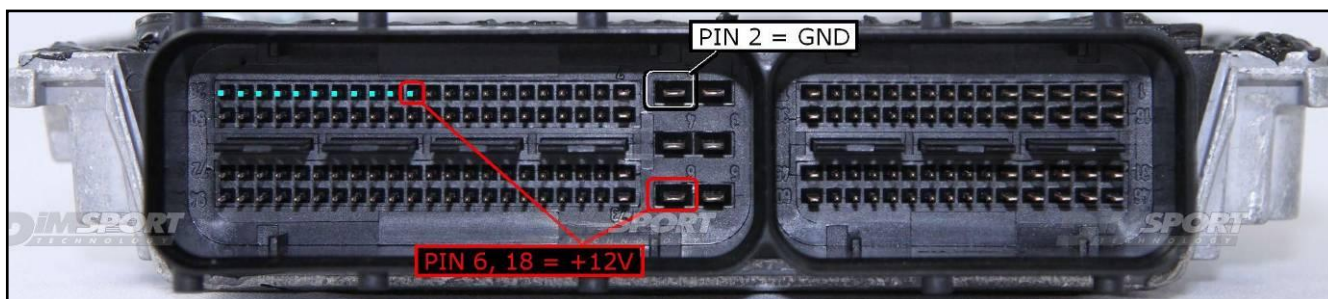
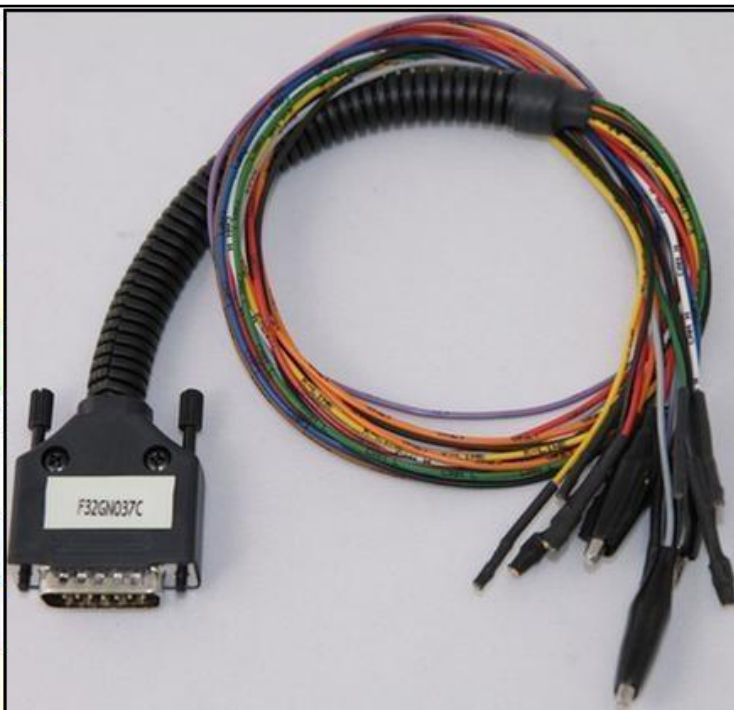


# SIMOS PPD1X VAG

## ECU CONNECTOR

In order to connect to the ECU use the CABLE F32GN037C.  
Make sure that the POWER led (red) on Trasdata is ON.  
Use this power connection for the DIMA connection too.

COLORE FILO WIRE COLOUR	DESCRIZIONE DESCRIPTION
ROSSO RED	POSITIVO DIRETTO POWER BATTERY
ARANCIO ORANGE	POSITIVO SOTTO QUADRO POWER SWITCH ON
NERO BLACK	MASSA GND
GIALLO YELLOW	KLINE
VERDE GREEN	CAN LOW
BIANCO WHITE	CAN HIGH
GRIGIO GREY	POL4 BOOT
BLU BLUE	POL5 CNF1
VIOLA/GRIGIO PURPLE/GREY	TENSIONE PROG. PROG. VOLTAGE
MARRONE BROWN	RESET

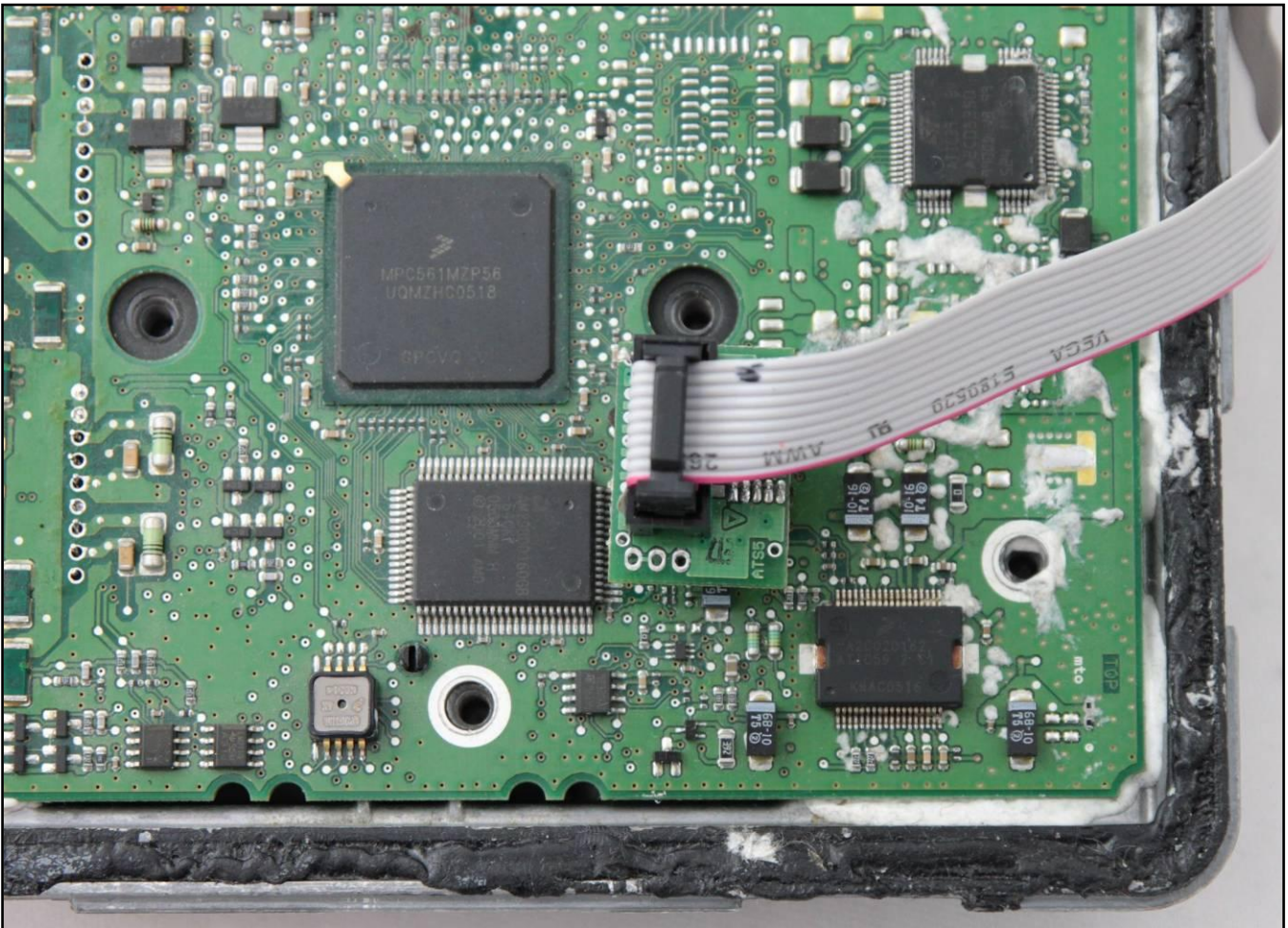
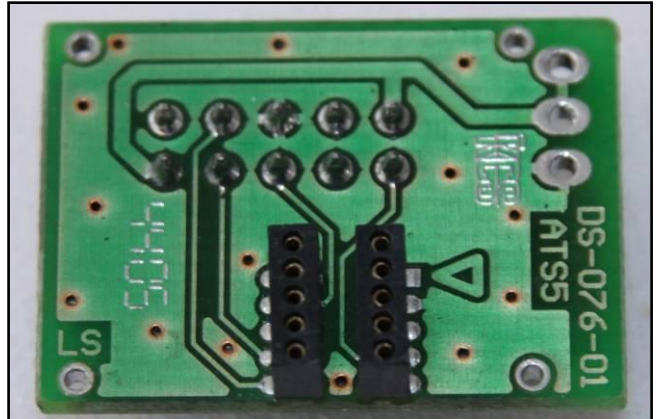
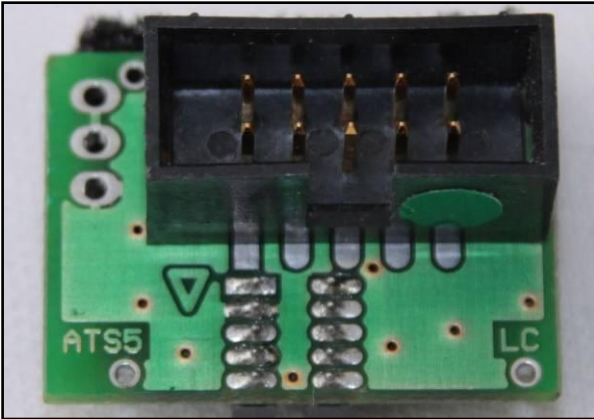


### WARNING :

due to the relevant power absorbed by the ECU, instead of the standard power supply, it is necessary to use a booster or an additional battery. The ECU must be fed through the New-trasdata, connect the F32GN003 power cable to the Trasdata and the crocodile side to the power source

# SIMOS PPD1X VAG

## DIRECT CONNECTION with SIEMENS F34NTA06 adapter



# SIMOS PPD1X VAG

## DIMA CONNECTION with SIEMENS F34DM003+F34DM004 adapters

