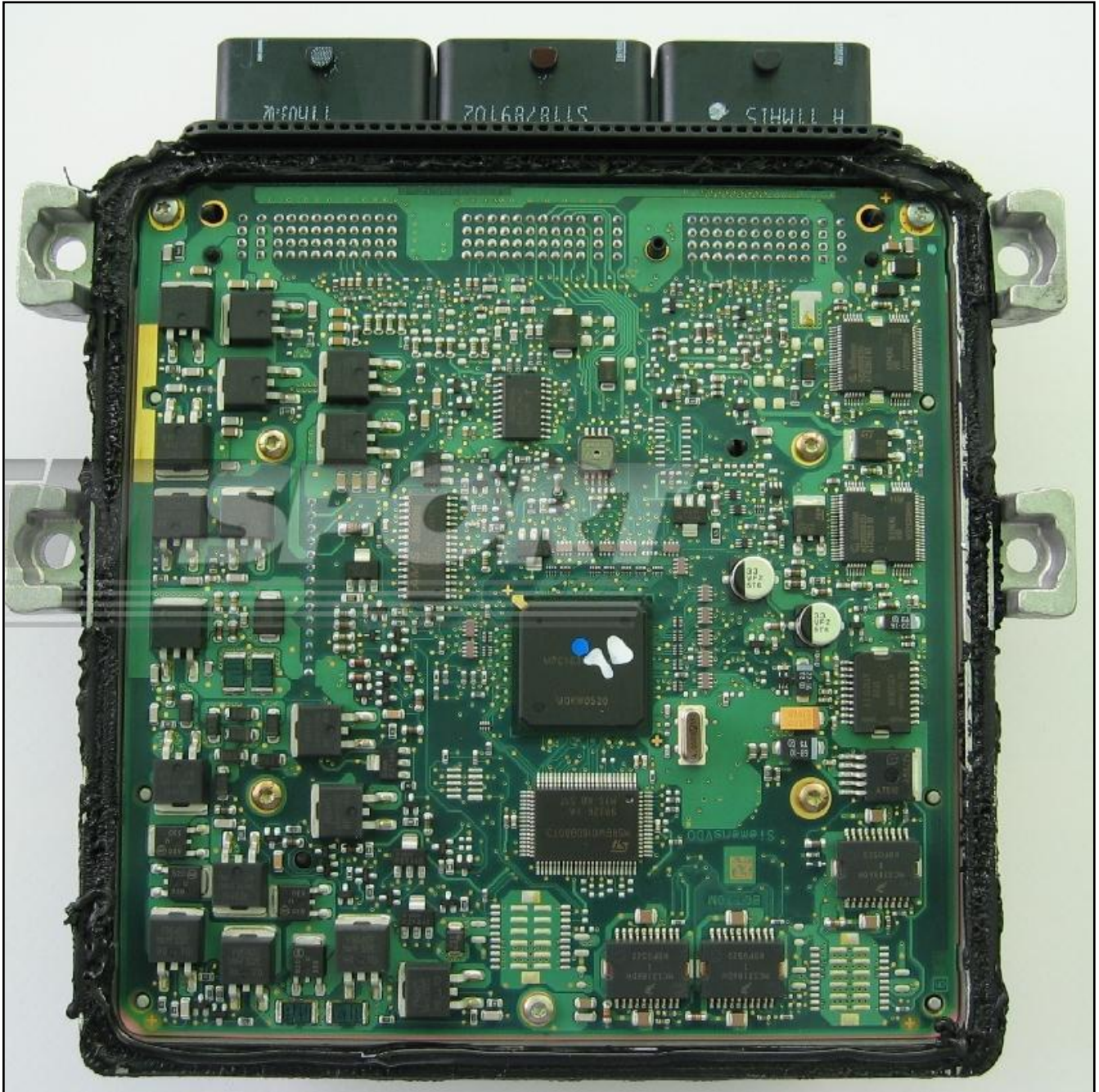


SID 201 203 204

plugin 098,104,105,115,384,979

The lay-by pins are placed in the lower side of the ECU as shown in the picture below.

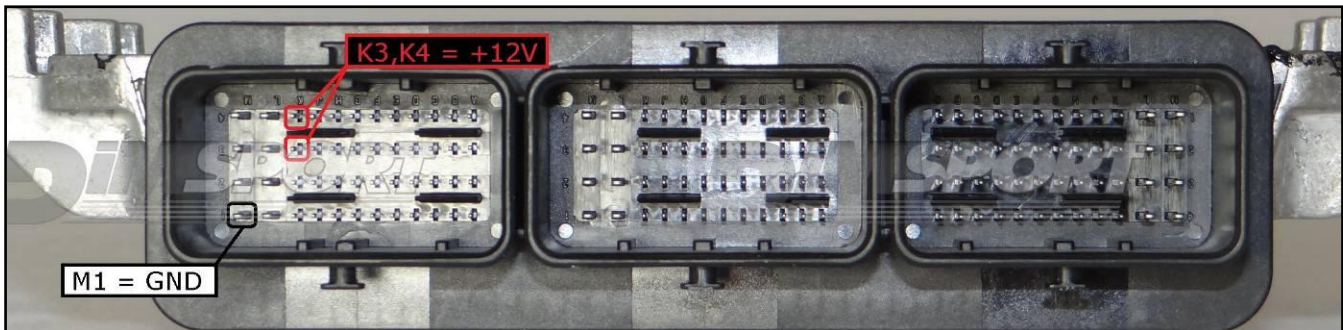
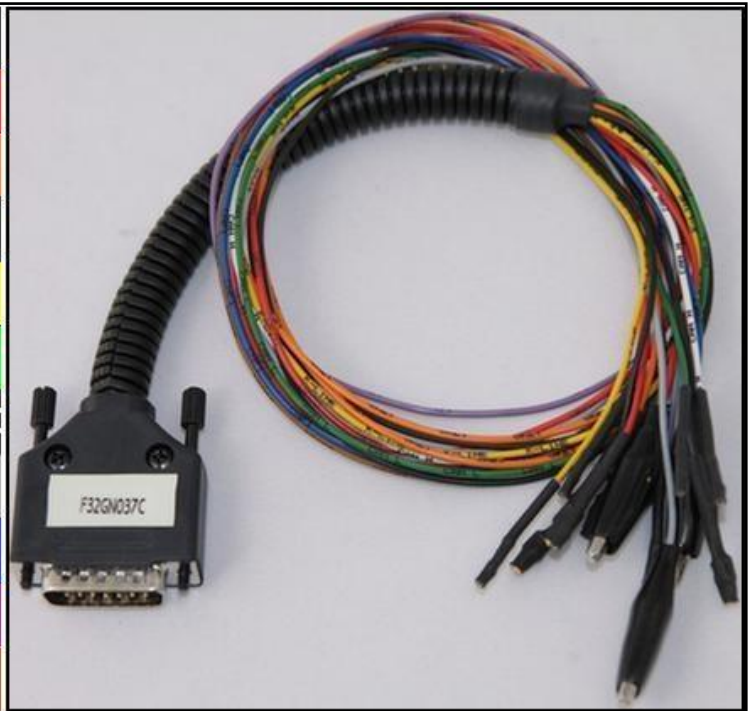


SID 201 203 204

ECU CONNECTOR

In order to connect to the ECU use the CABLE F32GN037C.
Make sure that the POWER led (red) on Trasdata is ON.

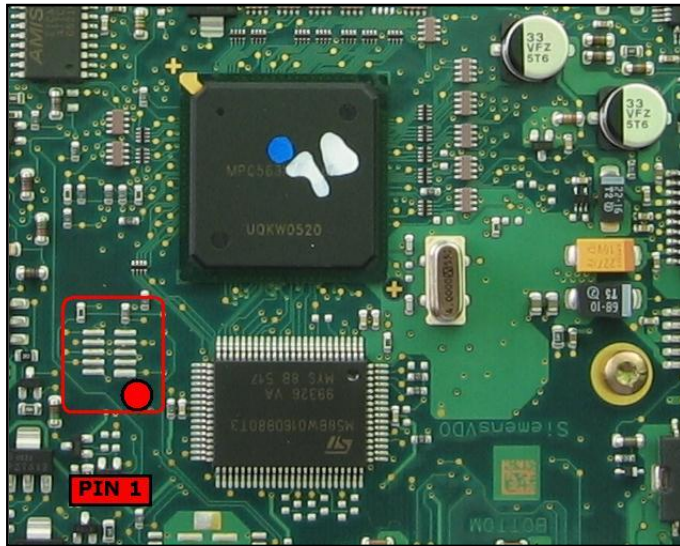
COLORE FILO WIRE COLOUR	DESCRIZIONE DESCRIPTION
ROSSO RED	POSITIVO DIRETTO POWER BATTERY
ARANCIO ORANGE	POSITIVO SOTTO QUADRO POWER SWITCH ON
NERO BLACK	MASSA GND
GIALLO YELLOW	KLINE
VERDE GREEN	CAN LOW
BIANCO WHITE	CAN HIGH
GRIGIO GREY	POL4 BOOT
BLU BLUE	POL5 CNF1
VIOLA/GRIGIO PURPLE/GREY	TENSIONE PROG. PROG. VOLTAGE
MARRONE BROWN	RESET



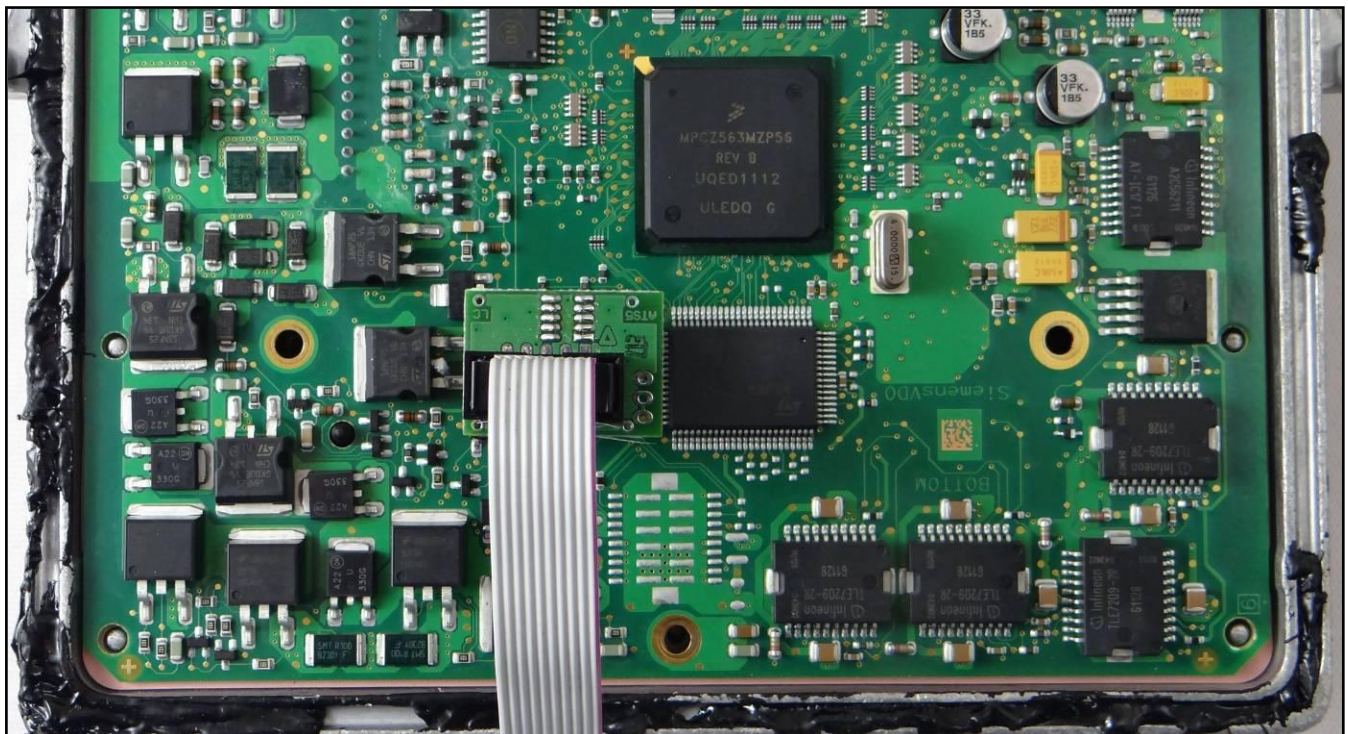
To the 2 power feeding pins K3 and K4 you can connect both wires red and orange, they both have 12 Volt signal.

SID 201 203 204

DIRECT CONNECTION with adapter SIEMENS F34NTA06



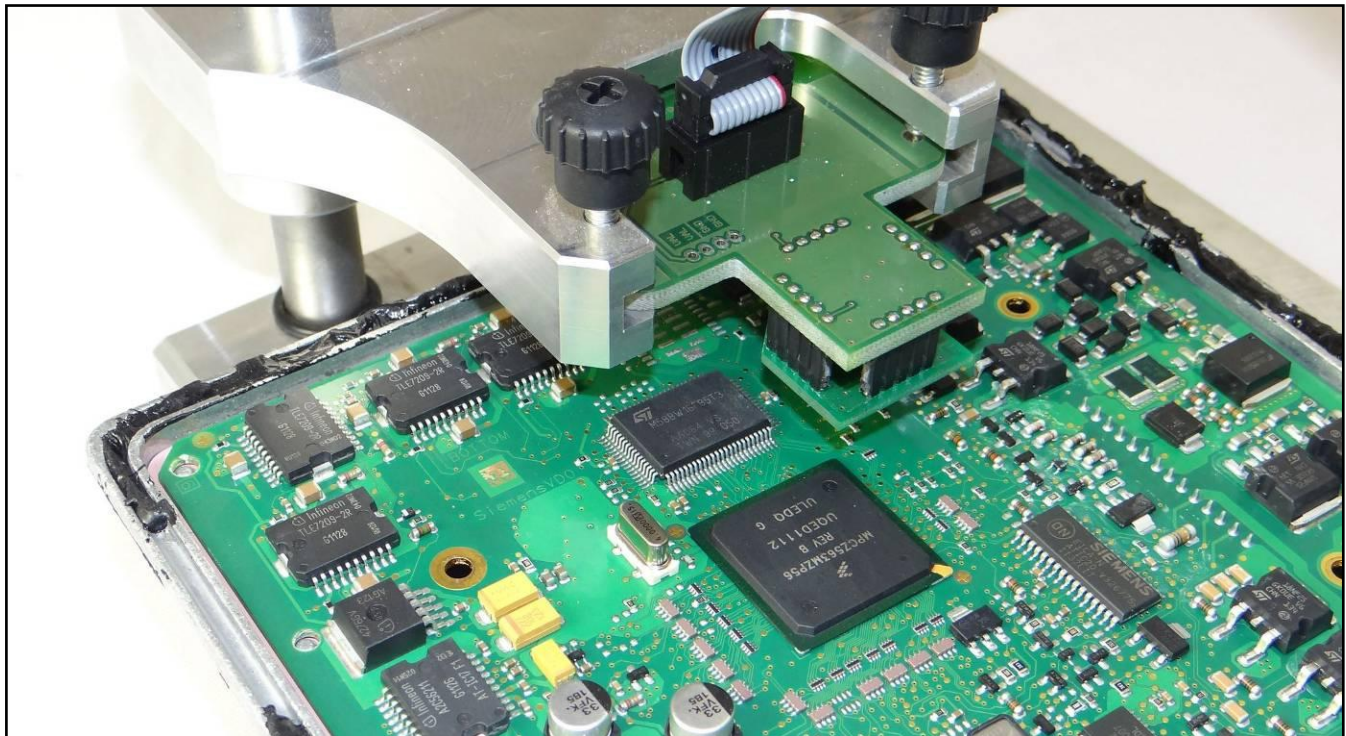
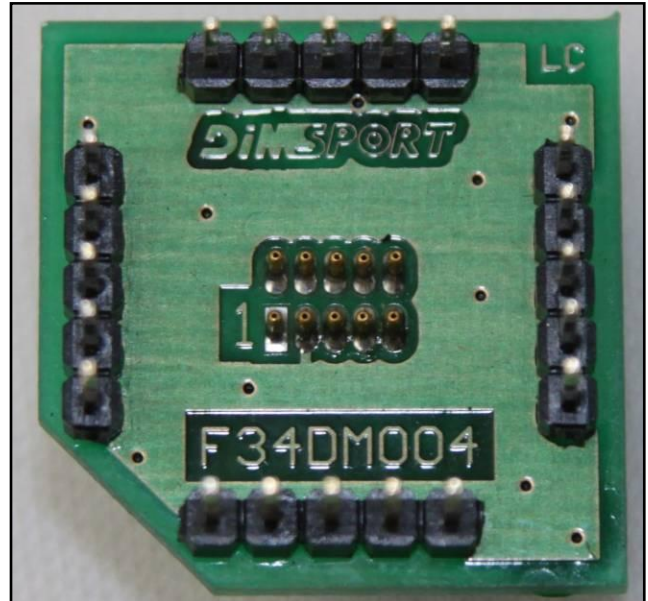
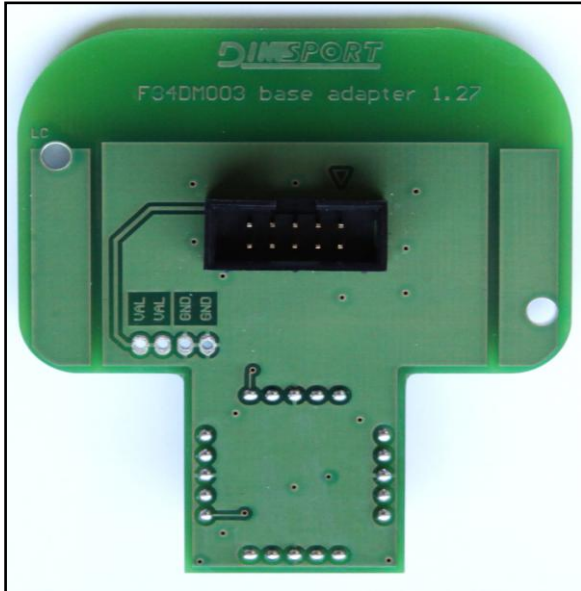
Connect the adapter F34NTA06 as shown in the picture.



SID 201 203 204

DIMA CONNECTION

It is necessary to connect the adapter F34DM003 on the F34DM004, be careful to the correct position of PIN 1.



SID 201 203 204

