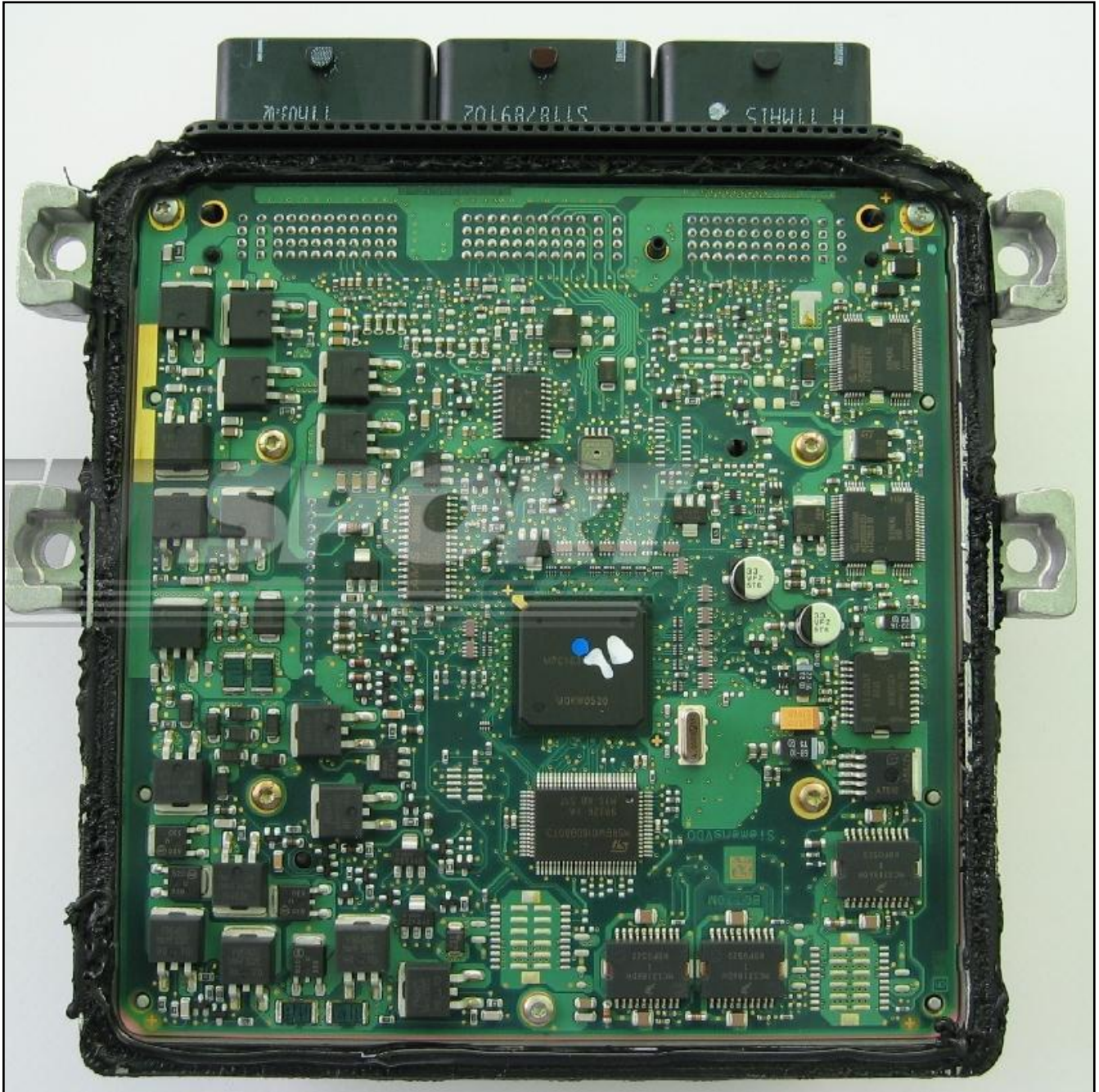


SID 201 203 204

**plugin 098,104,105,115,384,979**

The lay-by pins are placed in the lower side of the ECU as shown in the picture below.

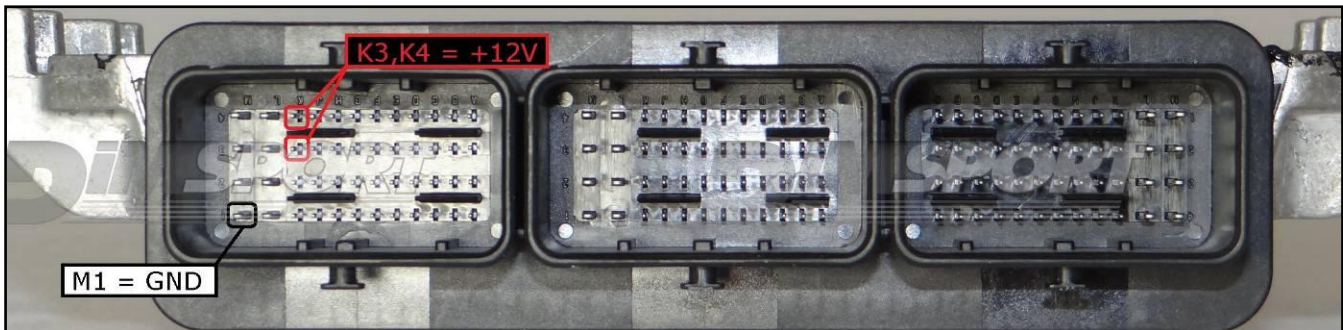
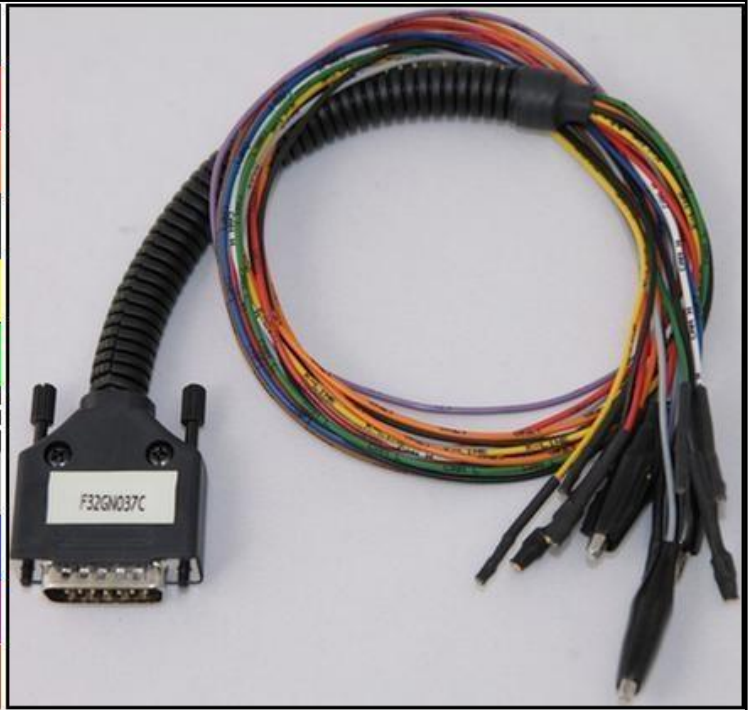


# SID 201 203 204

## ECU CONNECTOR

In order to connect to the ECU use the CABLE F32GN037C.  
Make sure that the POWER led (red) on Trasdata is ON.

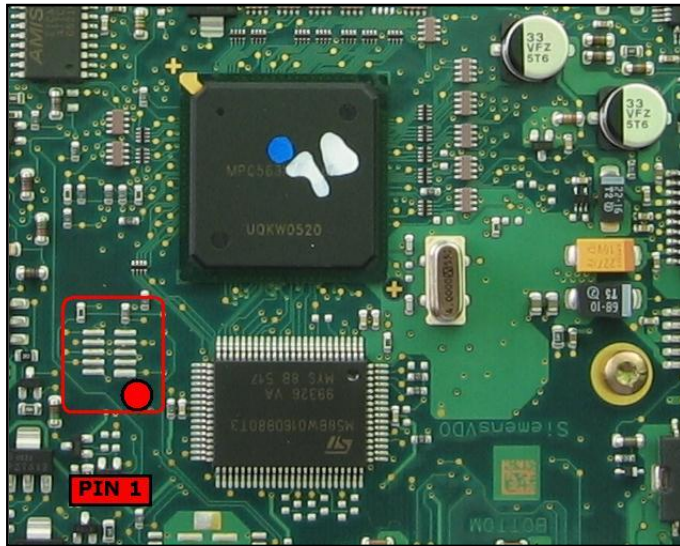
COLORE FILO WIRE COLOUR		DESCRIZIONE DESCRIPTION
ROSSO RED		POSITIVO DIRETTO POWER BATTERY
ARANCIO ORANGE		POSITIVO SOTTO QUADRO POWER SWITCH ON
NERO BLACK		MASSA GND
GIALLO YELLOW		KLINE
VERDE GREEN		CAN LOW
BIANCO WHITE		CAN HIGH
GRIGIO GREY		POL4 BOOT
BLU BLUE		POL5 CNF1
VIOLA/GRIGIO PURPLE/GREY		TENSIONE PROG. PROG. VOLTAGE
MARRONE BROWN		RESET



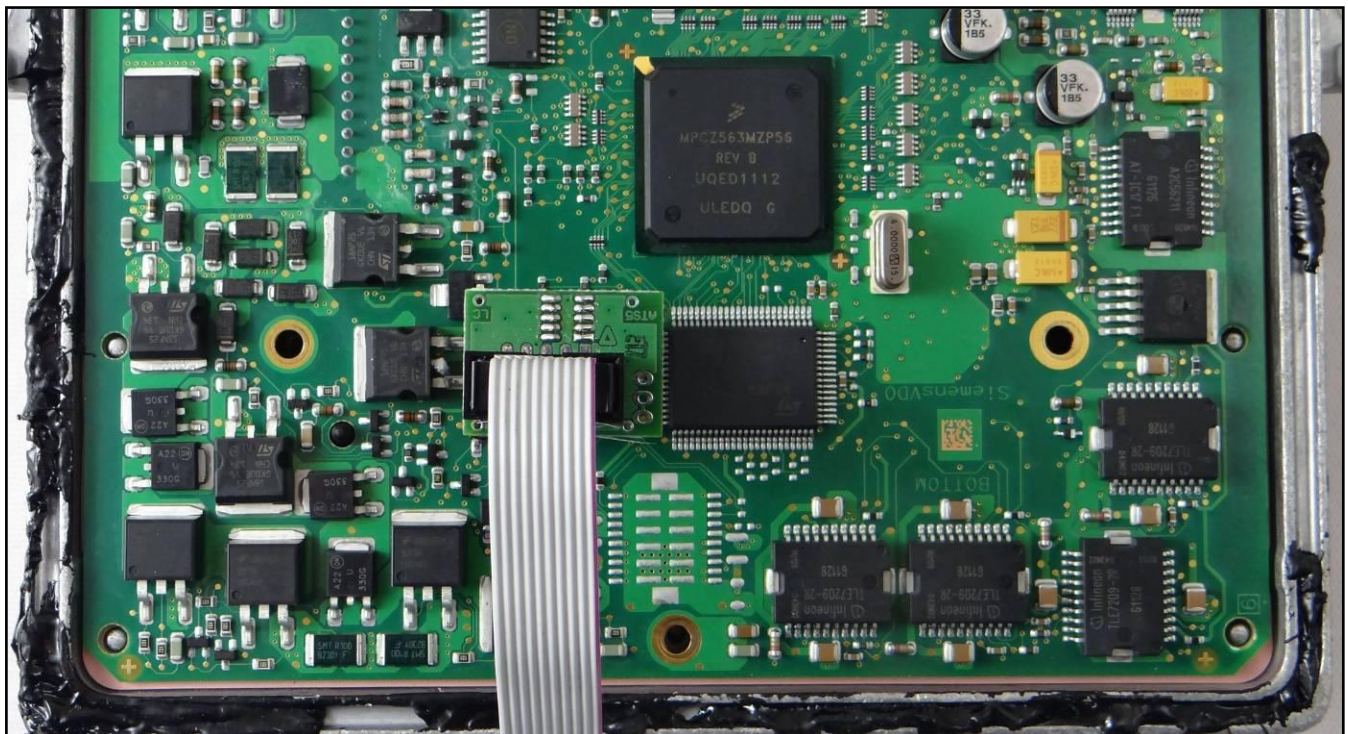
To the 2 power feeding pins K3 and K4 you can connect both wires red and orange, they both have 12 Volt signal.

SID 201 203 204

**DIRECT CONNECTION with adapter SIEMENS F34NTA06**



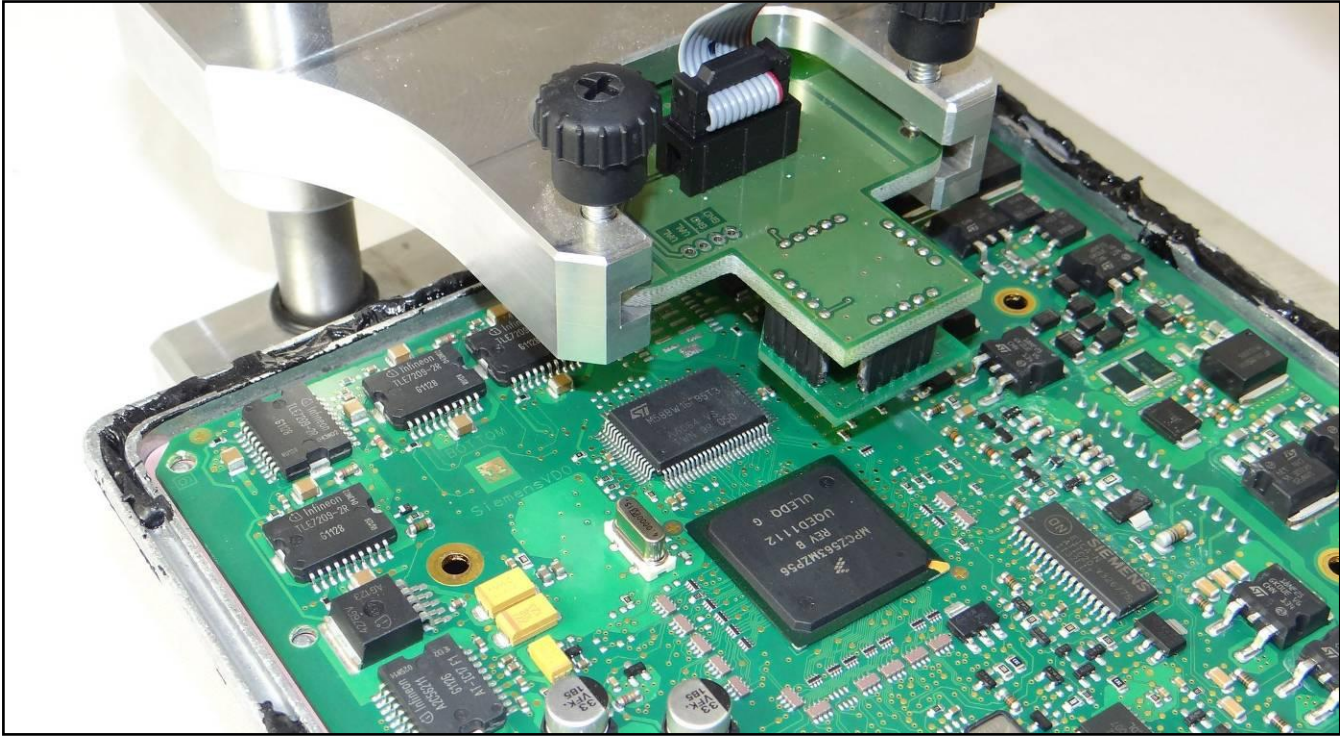
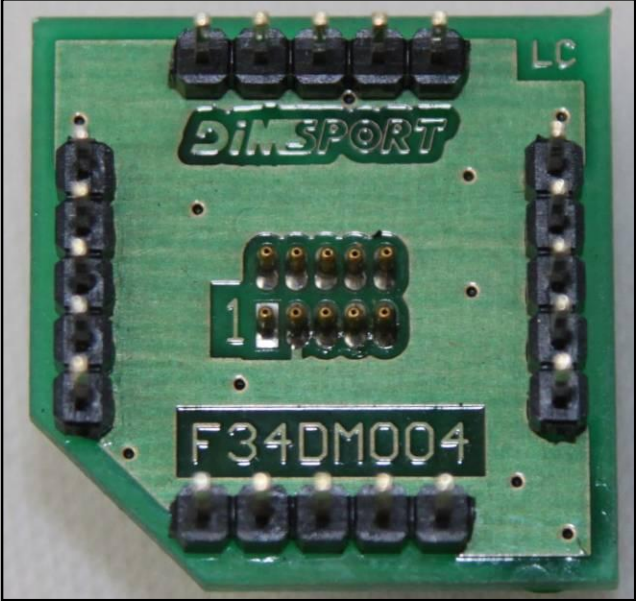
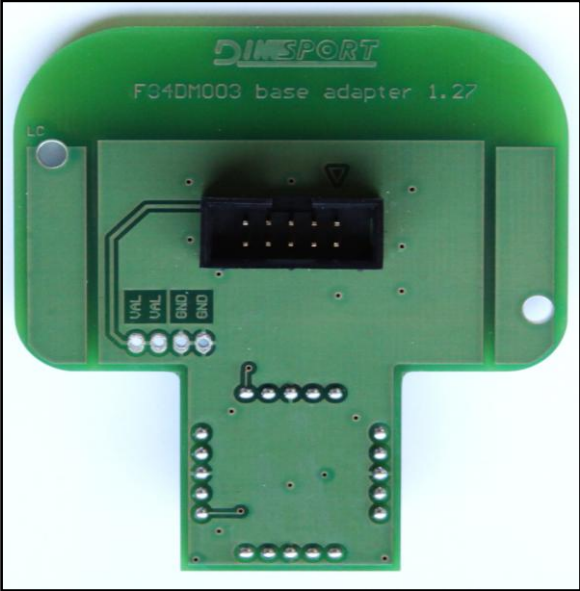
Connect the adapter F34NTA06 as shown in the picture.



SID 201 203 204

**DIMA CONNECTION**

It is necessary to connect the adapter F34DM003 on the F34DM004, be careful to the correct position of PIN 1.



SID 201 203 204

