

## SID 803 PSA

### plugin 032

The lay by pins are placed in the lower side of the ECU as shown in the picture here below.

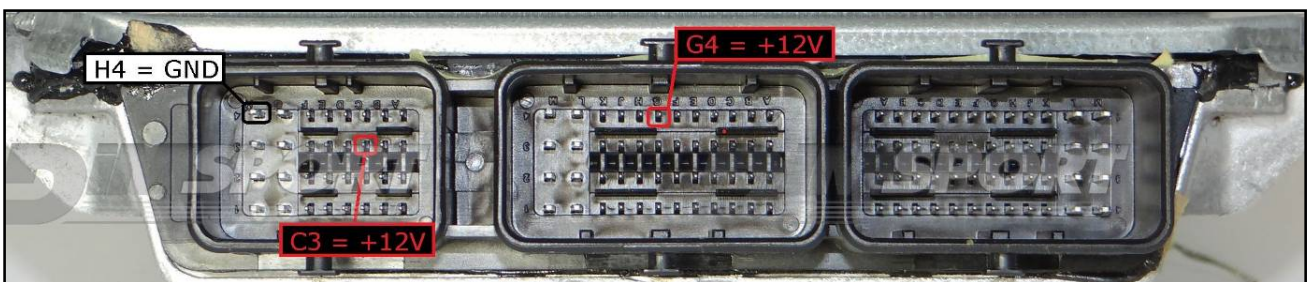
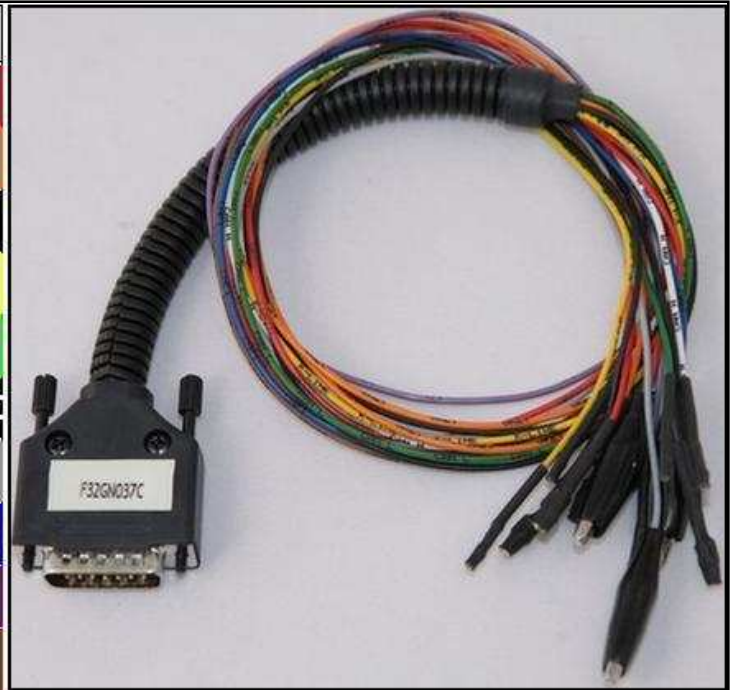


## SID 803 PSA

### ECU CONNECTOR

In order to connect to the ECU use the CABLE F32GN037C.  
Make sure that the POWER led (red) on Trasdata is ON.

COLORE FILO WIRE COLOUR	DESCRIZIONE DESCRIPTION
ROSSO RED	POSITIVO DIRETTO POWER BATTERY
ARANCIO ORANGE	POSITIVO SOTTO QUADRO POWER SWITCH ON
NERO BLACK	MASSA GND
GIALLO YELLOW	KLINE
VERDE GREEN	CAN LOW
BIANCO WHITE	CAN HIGH
GRIGIO GREY	POL4 BOOT
BLU BLUE	POL5 CNF1
VIOLA/GRIGIO PURPLE/GREY	TENSIONE PROG. PROG. VOLTAGE
MARRONE BROWN	RESET



To the power feeding (+12V) C3/G4 pins you can connect both wires red (VECU) and orange (VKEY), they both have 12 Volt signal.

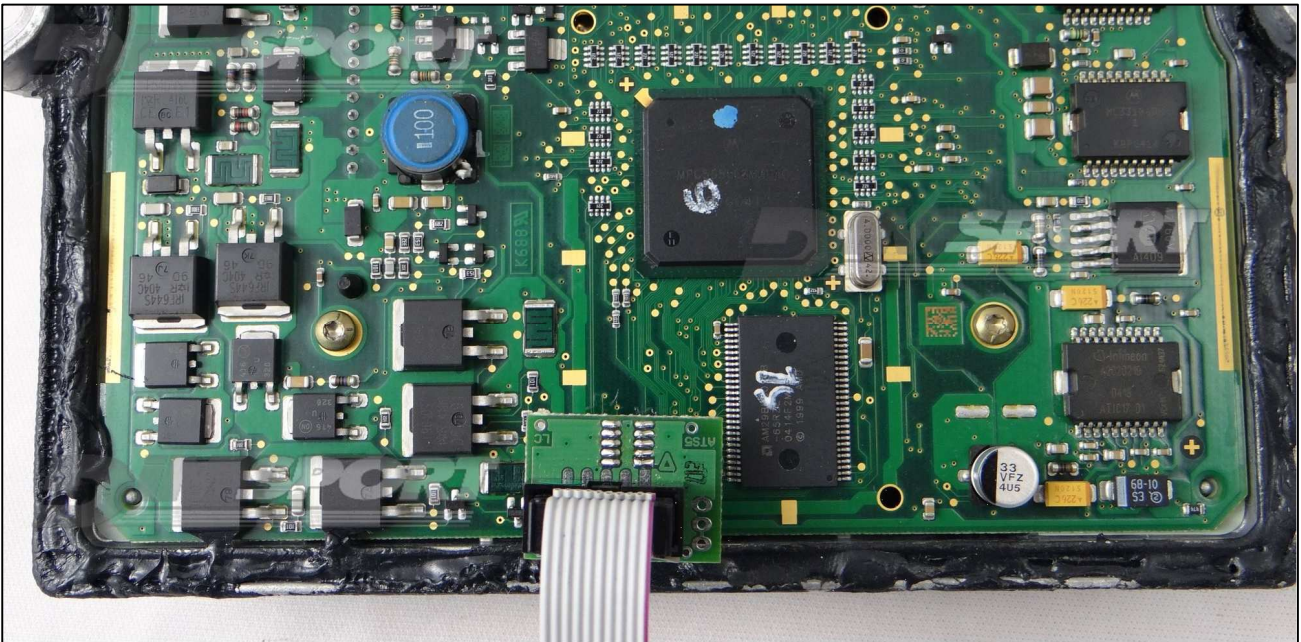


## SID 803 PSA

### DIRECT CONNECTION with F34NTA06 adapter



Connect the adapter F34NTA06 as shown in the picture here below.

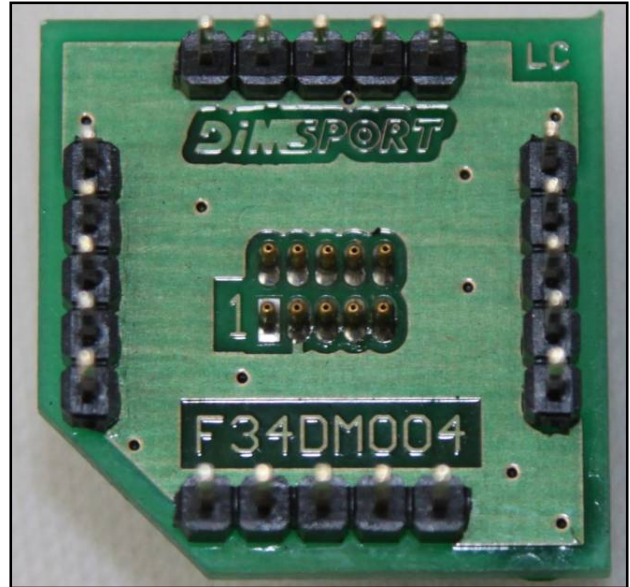
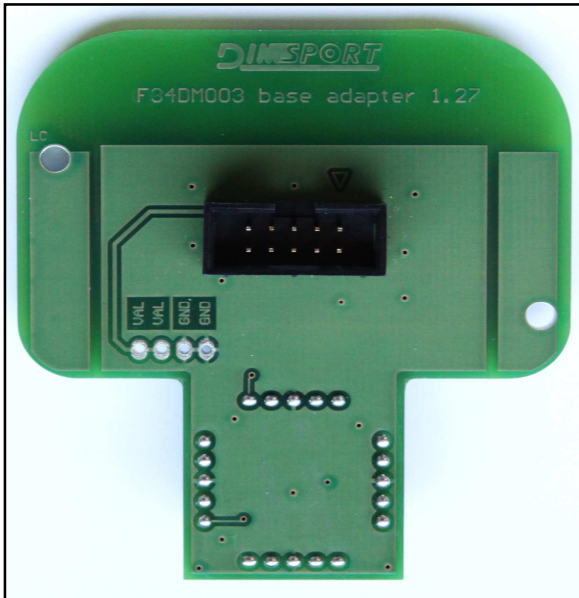




## SID 803 PSA

### METAL POSITIONING FRAME CONNECTION

For the metal positioning frame connection is required the adapter F34DM003+F34DM004, please verify the correct position of PIN 1.





SID 803 PSA

