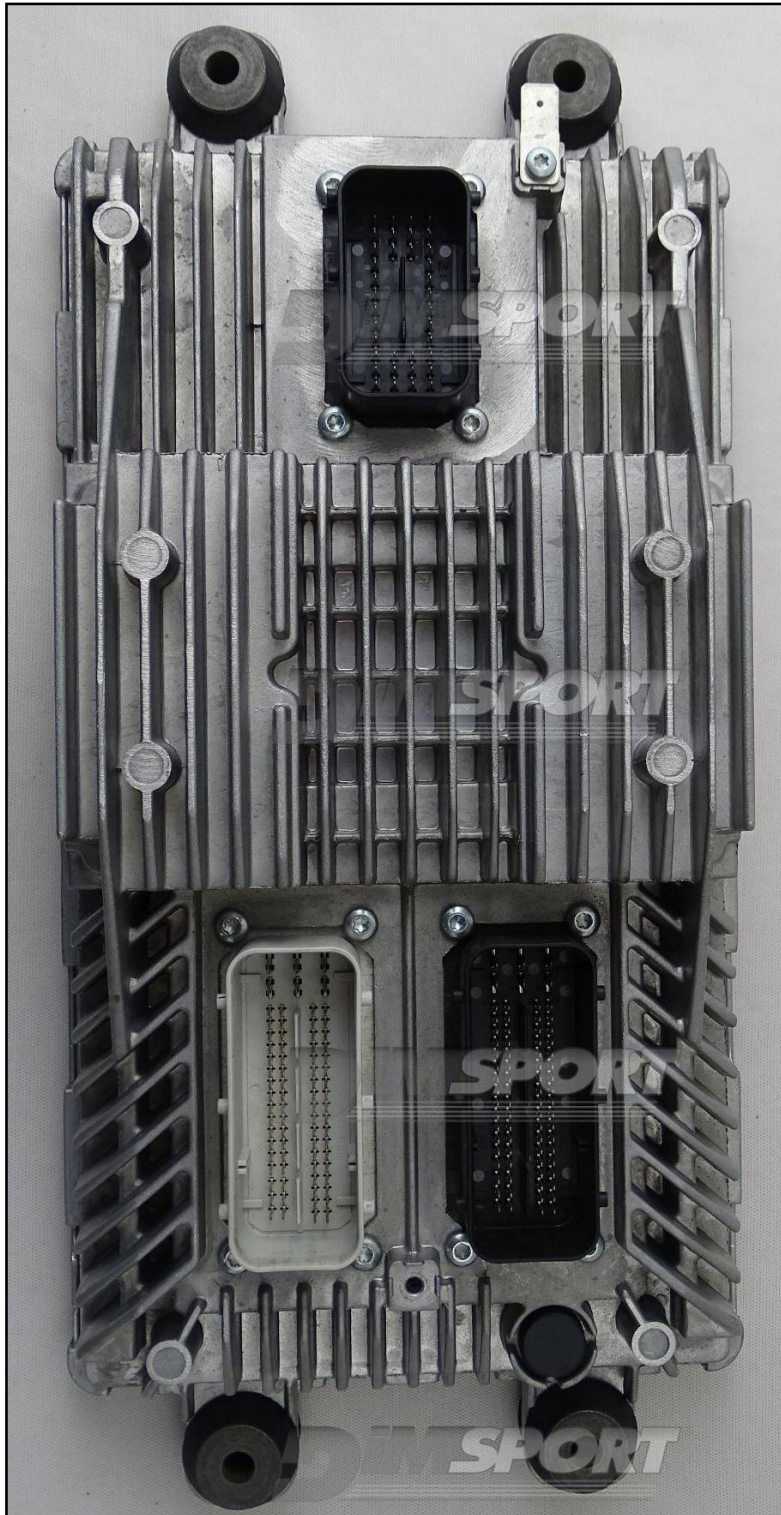
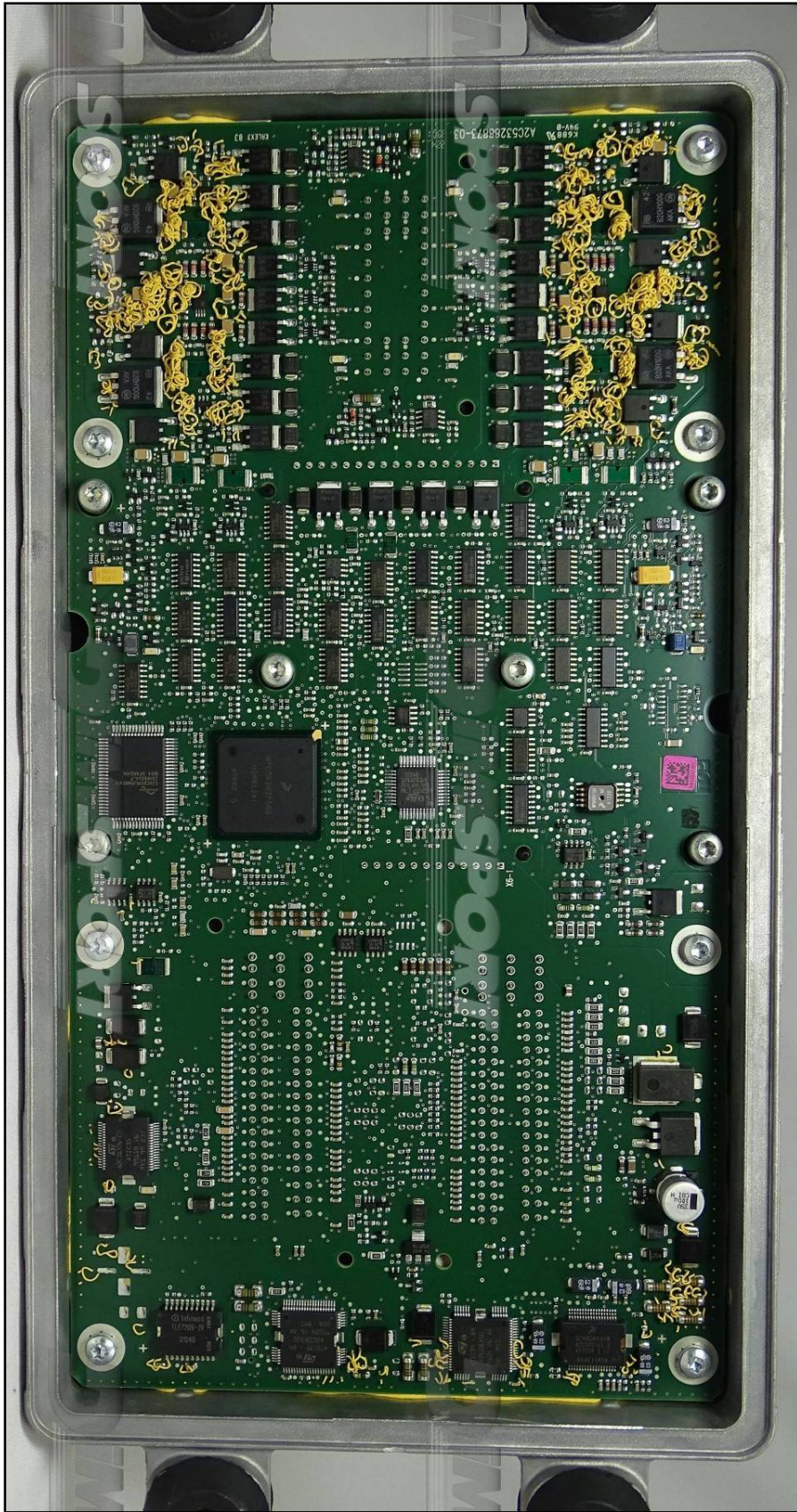


SIEMENS SID904 INTERNATIONAL

plugin 804 SIEMENS SID 904 INTERNATIONAL
plugin 921 SIEMENS SID 913 INTERNATIONAL



SIEMENS SID904 INTERNATIONAL

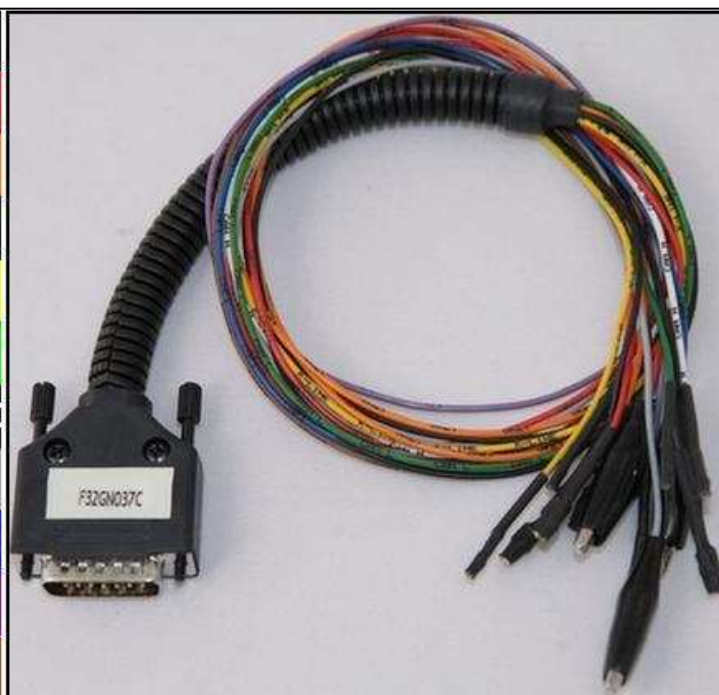


SIEMENS SID904 INTERNATIONAL

ECU CONNECTOR

In order to connect to the ECU use the CABLE F32GN037C.
Make sure that the POWER led (red) on Trasdata is ON.

COLORE FILO WIRE COLOUR	DESCRIZIONE DESCRIPTION
ROSSO RED	POSITIVO DIRETTO POWER BATTERY
ARANCIO ORANGE	POSITIVO SOTTO QUADRO POWER SWITCH ON
NERO BLACK	MASSA GND
GIALLO YELLOW	KLINE
VERDE GREEN	CAN LOW
BIANCO WHITE	CAN HIGH
GRIGIO GREY	POL4 BOOT
BLU BLUE	POL5 CNF1
VIOLA/GRIGIO PURPLE/GREY	TENSIONE PROG. PROG. VOLTAGE
MARRONE BROWN	RESET

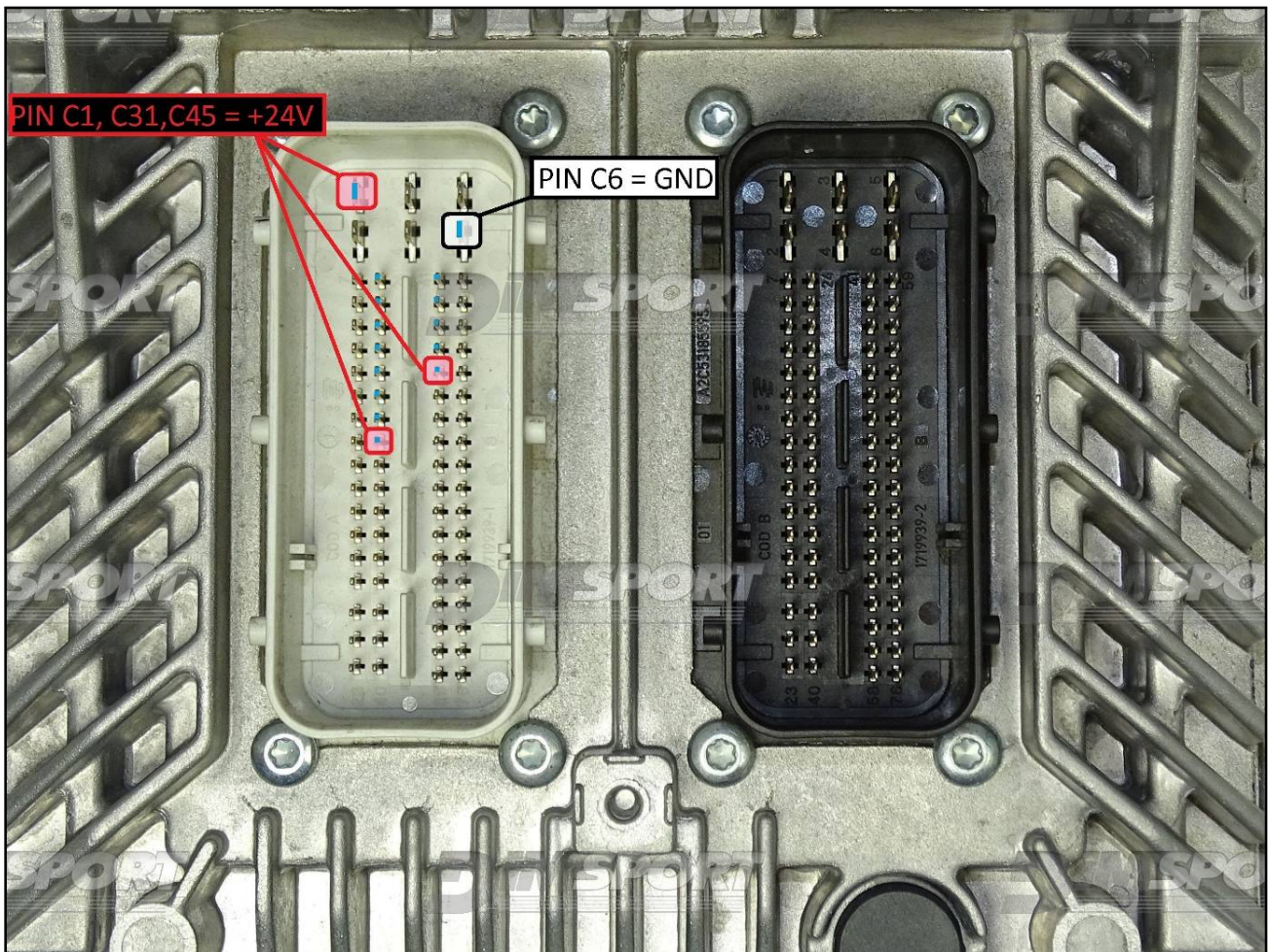


WARNING:

Due to the relevant power absorbed by the ECU at the beginning of the communication procedures it is necessary to feed the ECU with a booster or an additional battery. The ECU must be fed through the Trasdata, connect the F32GN003 power cable to the Trasdata.



SIEMENS SID904 INTERNATIONAL

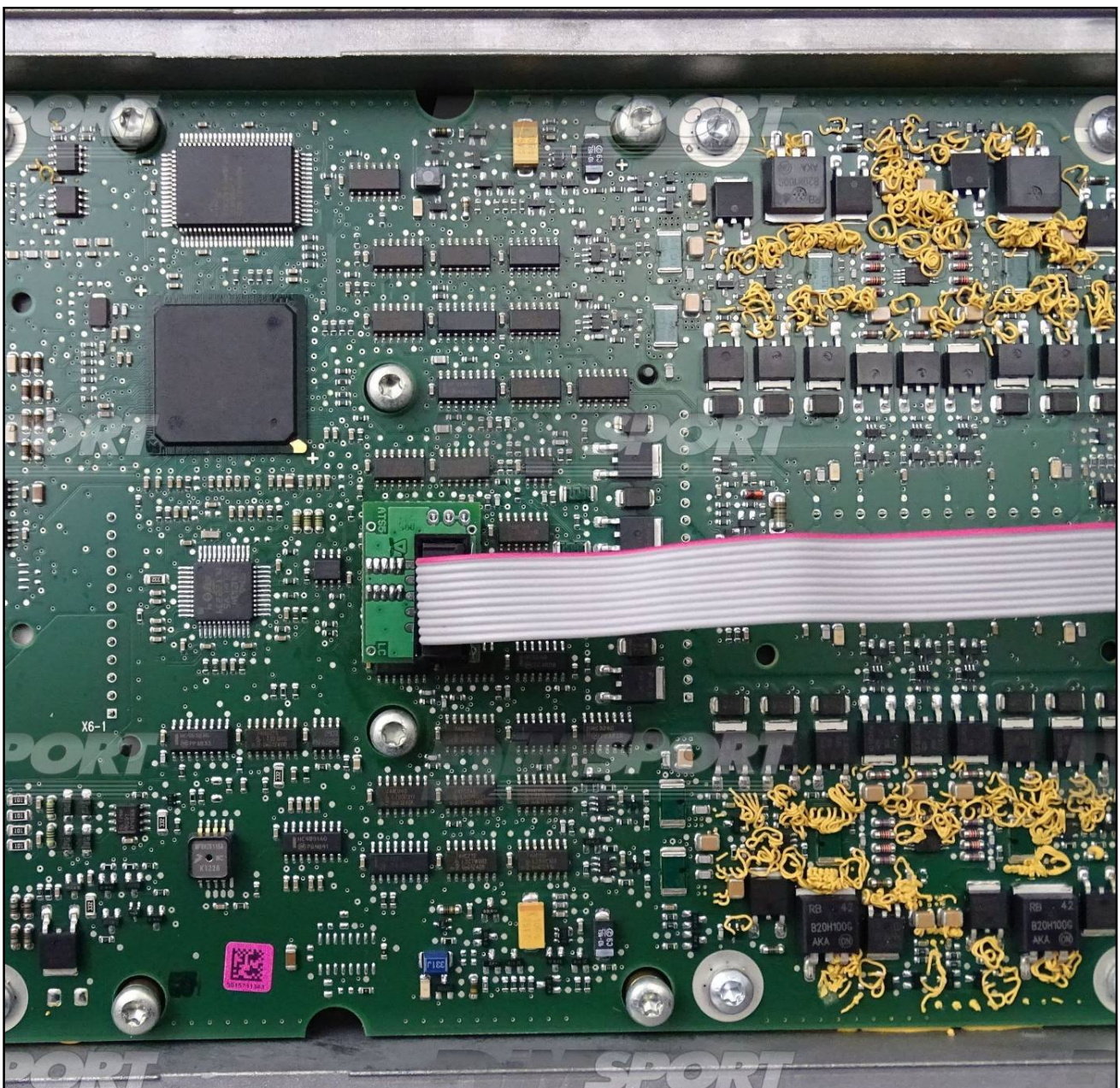
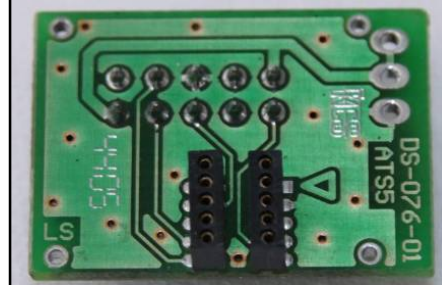
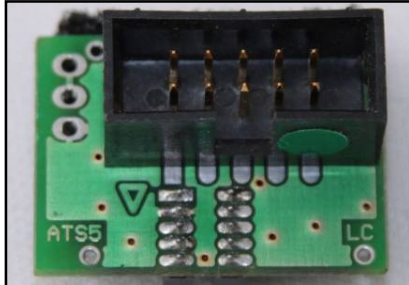


To the power feeding pins C1,C31,C45 (+24V) you can connect both wires red (VECU) and orange (VKEY) of the F32GN037C cable, they both have 24V signal.

SIEMENS SID904 INTERNATIONAL

F34NTA06 ADAPTER CONNECTION

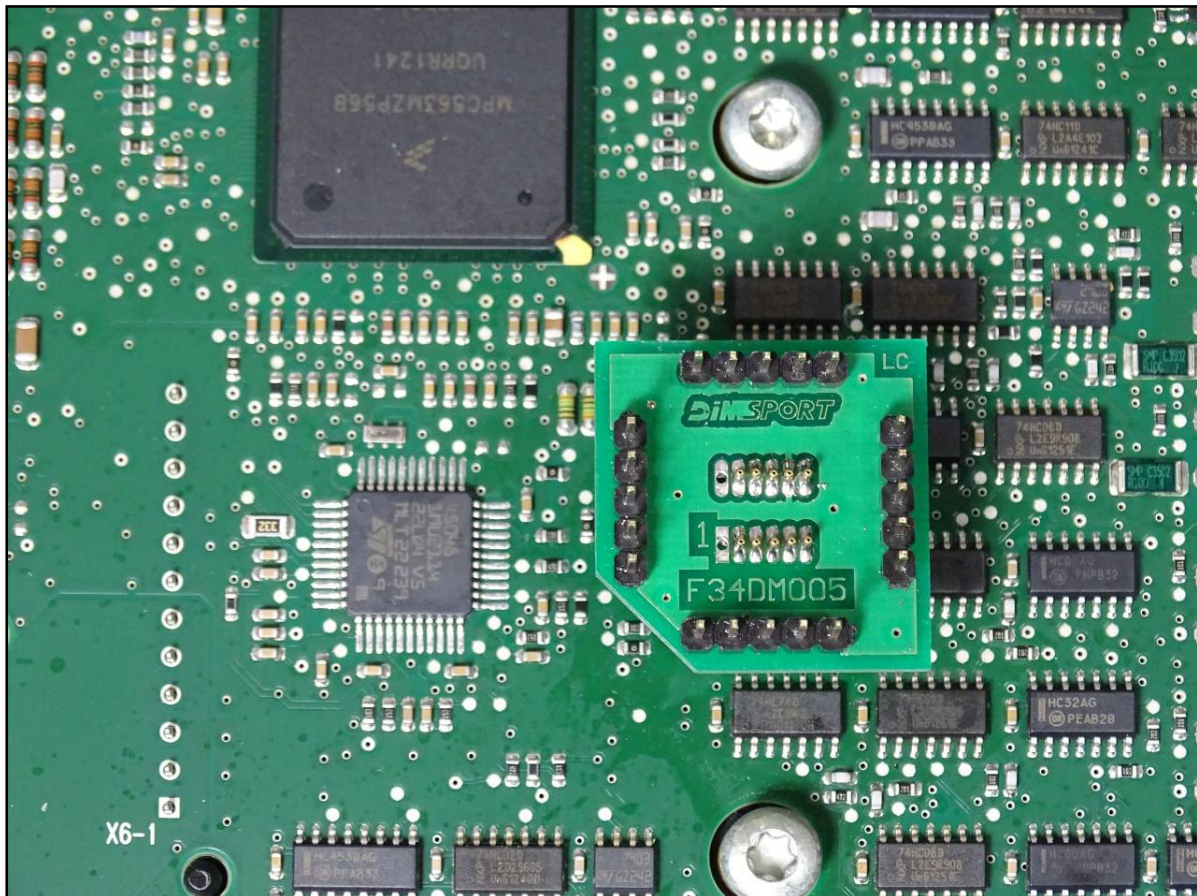
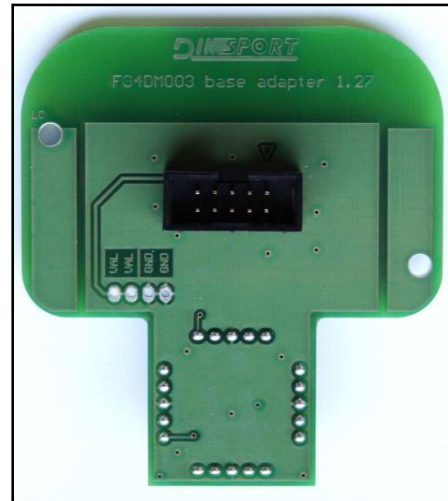
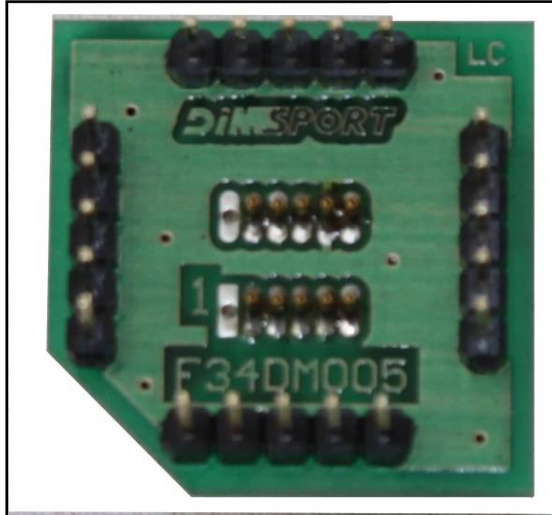
The ECU must always be powered through the F32GN037C cable.



SIEMENS SID904 INTERNATIONAL

METAL POSITIONING FRAME CONNECTION

Use base adapter F34DM003 + F34DM005 as displayed in the following pictures.
The ECU must always be powered through the F32GN037C cable.



SIEMENS SID904 INTERNATIONAL

