

## CONTINENTAL SIEMENS VDO M3C DUCATI

### plugin

341 - Continental Siemens VDO M3C S12X256SV Ducati

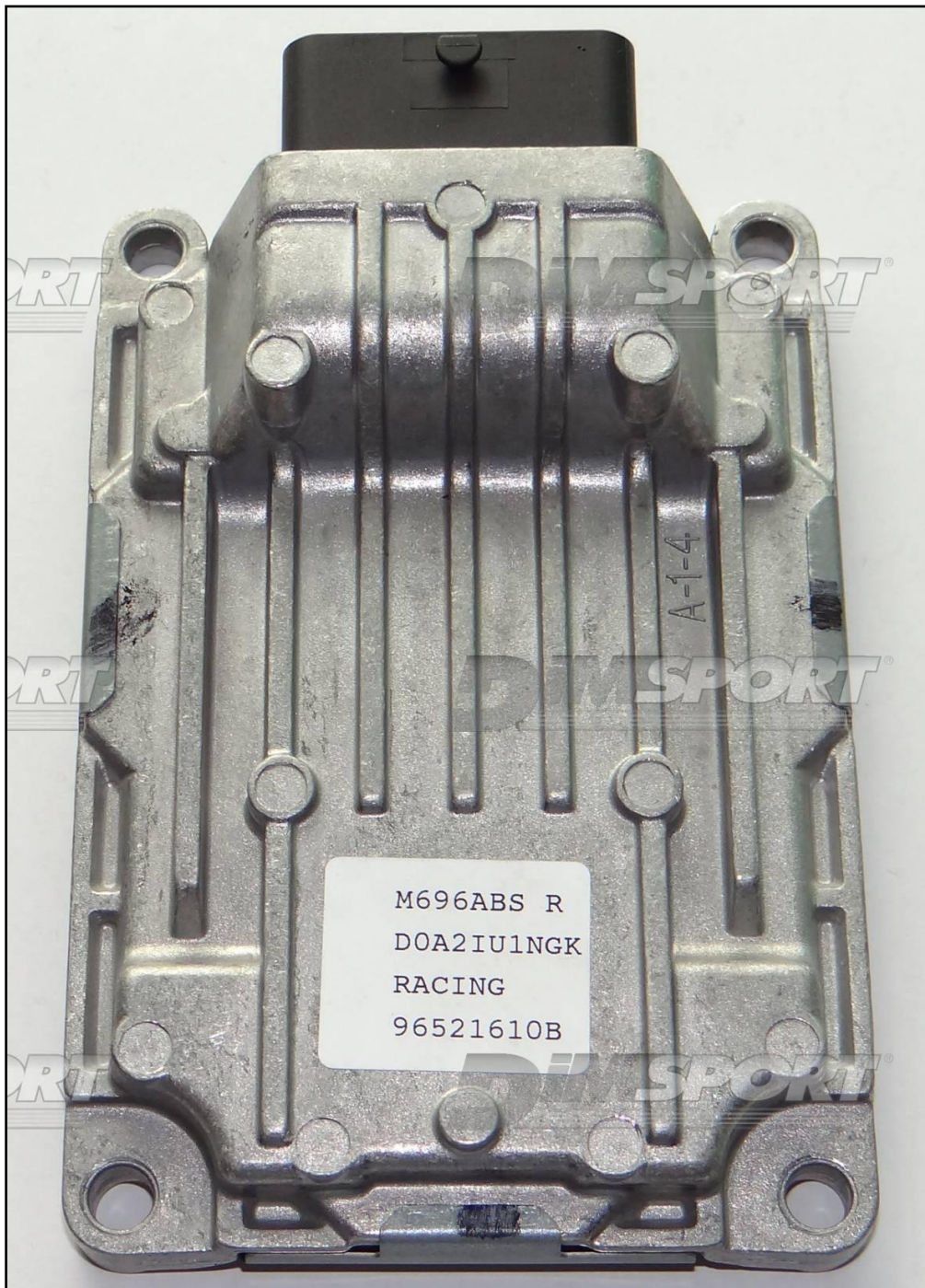
540 - Continental Siemens VDO M3C S12XET256MAL Can-Am/BRP/Ducati

552 - Continental Siemens VDO M3C S12XET256MAL Can-Am/BRP

909 - Continental Siemens VDO M3C MC9S12XE256 Arctic cat

911 - Continental Siemens VDO M3C MC9S12XE256 Kymco

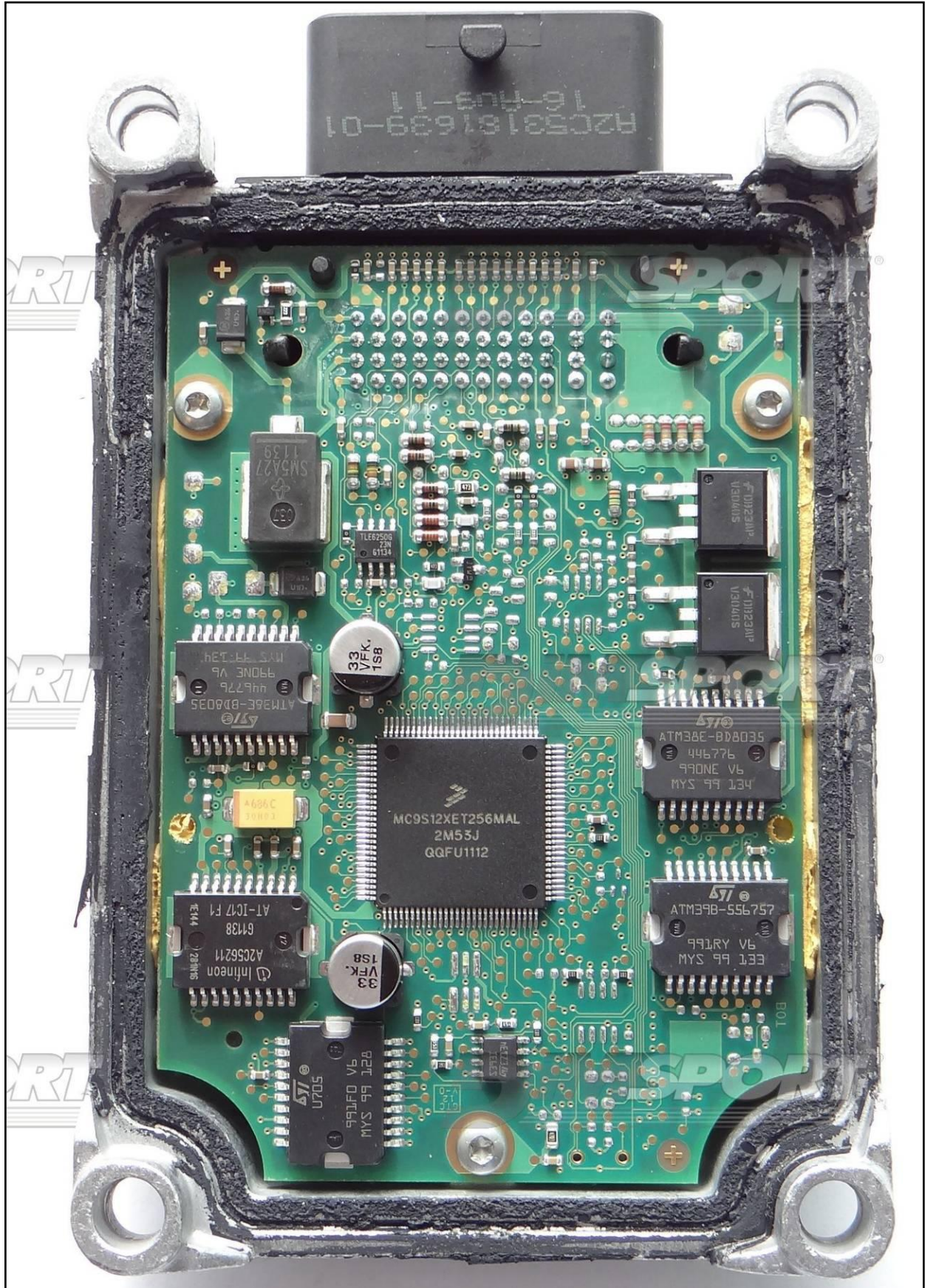
The lay-by pins are placed in the lower part of the ECU. It is ONLY possible the BDM FREE WIRING CONNECTION with the wire F34NTF51.



CONTINENTAL SIEMENS VDO M3C DUCATI



CONTINENTAL SIEMENS VDO M3C DUCATI

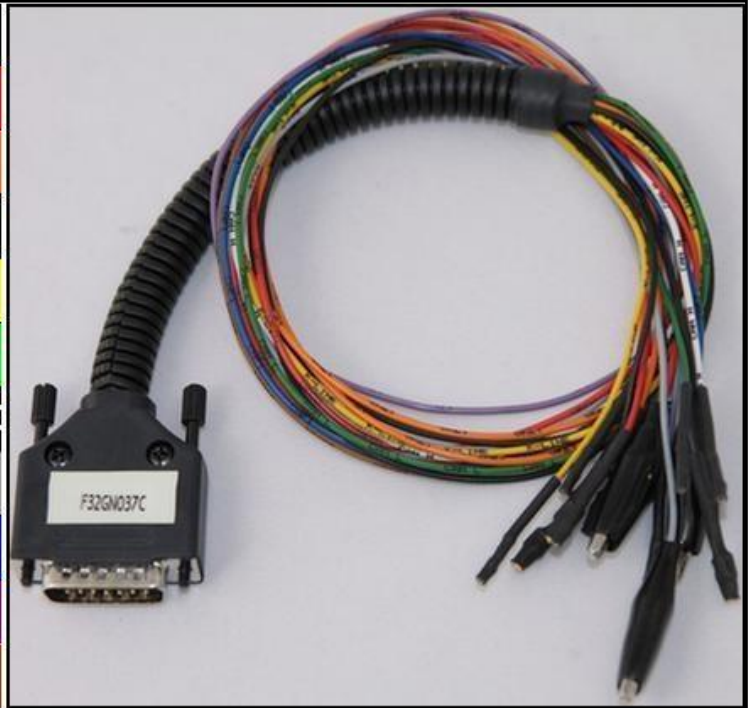


## CONTINENTAL SIEMENS VDO M3C DUCATI

### ECU CONNECTION

In order to connect to the ECU use the CABLE F32GN037C/D.  
Make sure that the POWER led (red) on Trasdata is ON.

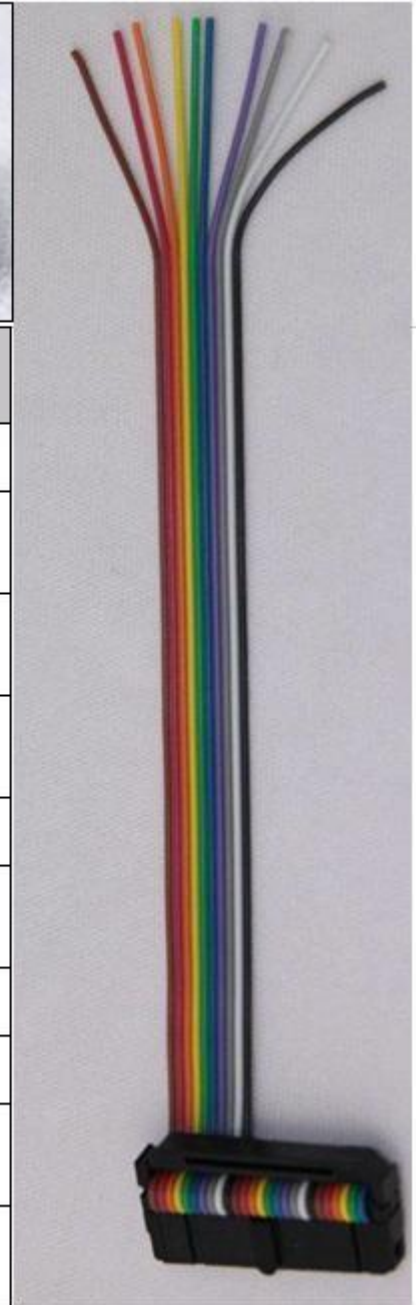
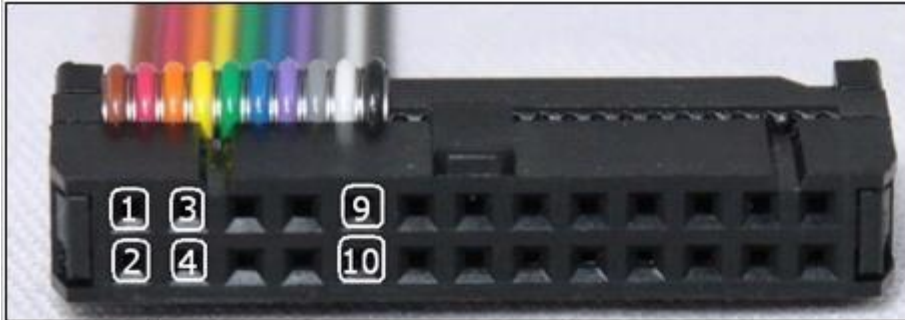
COLORE FILO WIRE COLOUR	DESCRIZIONE DESCRIPTION
ROSSO RED	POSITIVO DIRETTO POWER BATTERY
ARANCIO ORANGE	POSITIVO SOTTO QUADRO POWER SWITCH ON
NERO BLACK	MASSA GND
GIALLO YELLOW	KLINE
VERDE GREEN	CAN LOW
BIANCO WHITE	CAN HIGH
GRIGIO GREY	POL4 BOOT
BLU BLUE	POL5 CNF1
VIOLA/GRIGIO PURPLE/GREY	TENSIONE PROG. PROG. VOLTAGE
MARRONE BROWN	RESET



# CONTINENTAL SIEMENS VDO M3C DUCATI

## BDM FREE WIRES CONNECTION

Connect the F34NTF51 wiring as shown here below:



Pin	Colore Colour
1	Non usato Not used
2	Non usato Not used
3	Non usato Not used
4	Non usato Not used
5	Verde Green
6	Blu Blue
7	Viola Violet
8	Non usato Not used
9	Non usato Not used
10	Non usato Not used

# CONTINENTAL SIEMENS VDO M3C DUCATI

