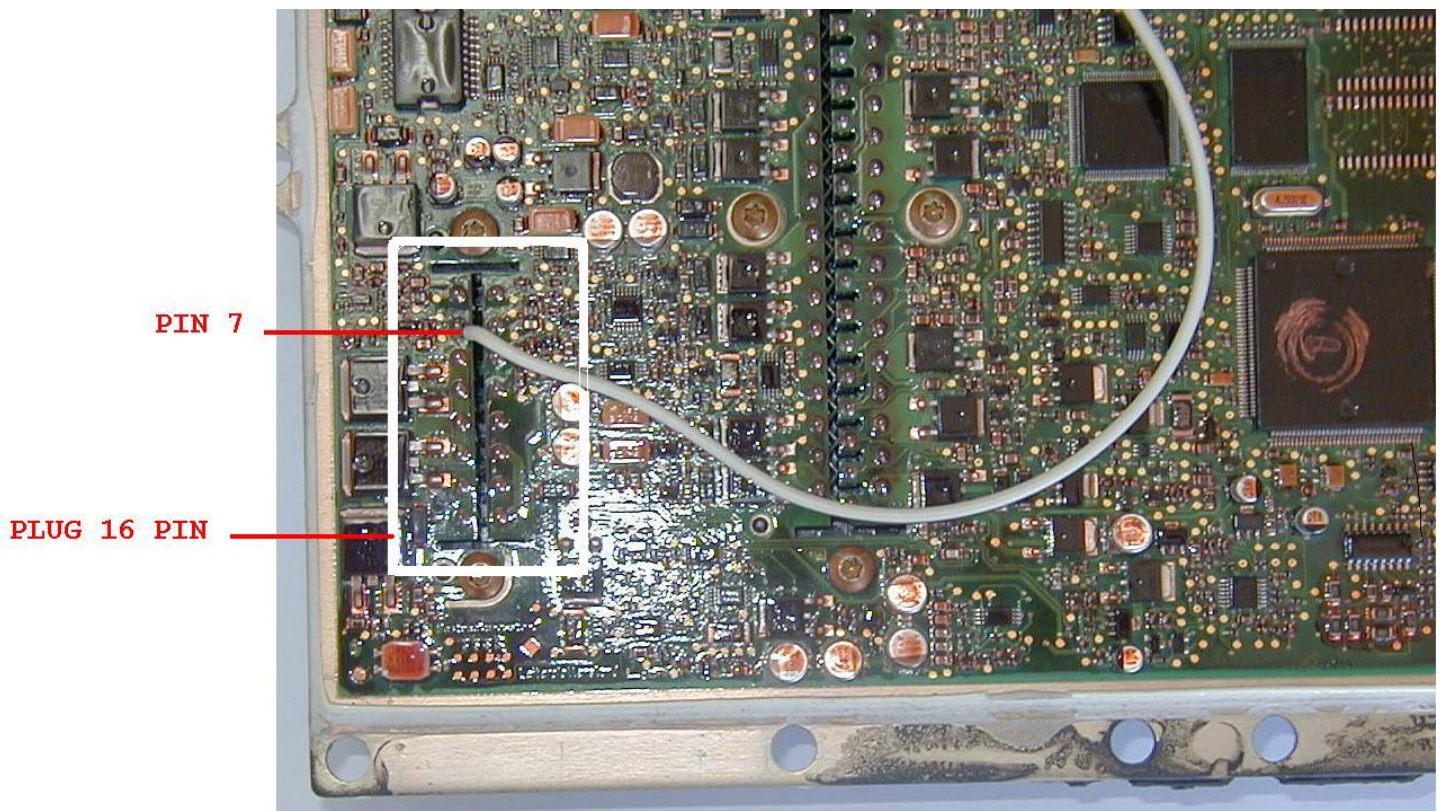


INSTRUCTIONS FOR THE ECU MERCEDES TEMIC ACTROS ATEGO UNIMOG ecc. CONNECTION

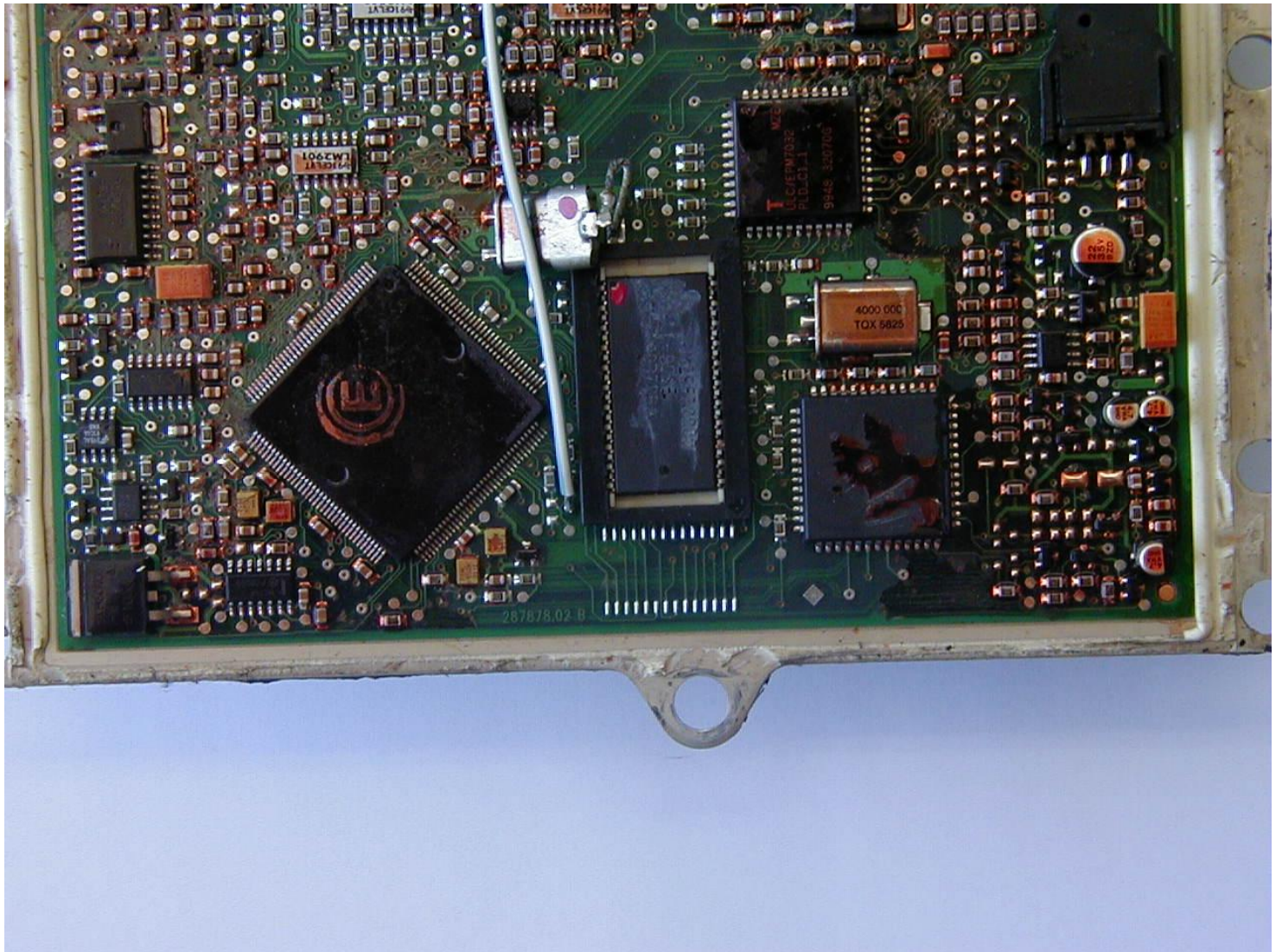


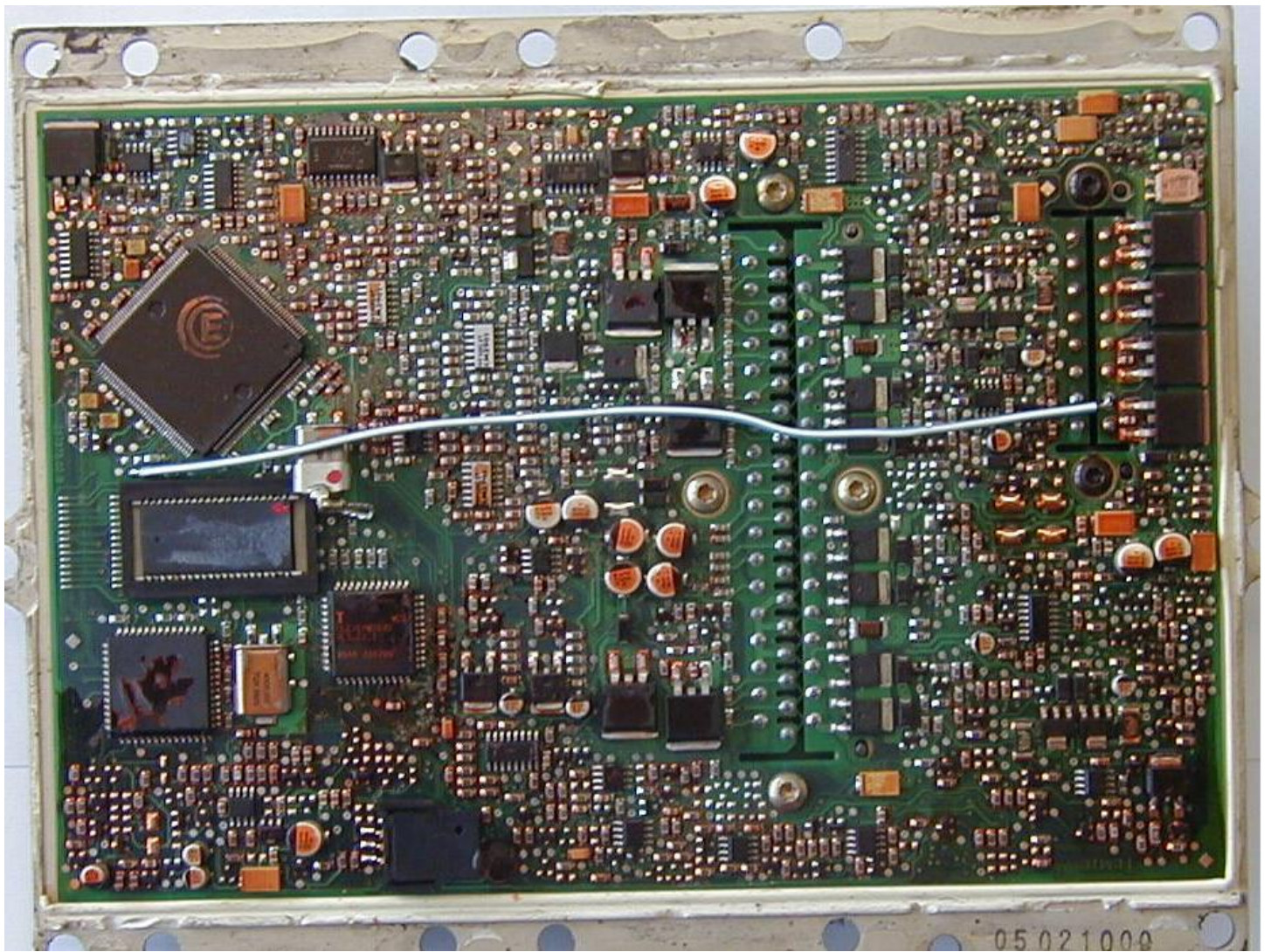
Get off the ecu from the truck, unscrew the screws , and lift the cover very slowly without damaging it.

Solder a wire on the target to the pin 7 of the connector to 16 pins equal for all the ECUs euro 1/ 2 / 3 29F200 PSOP TSPO ..

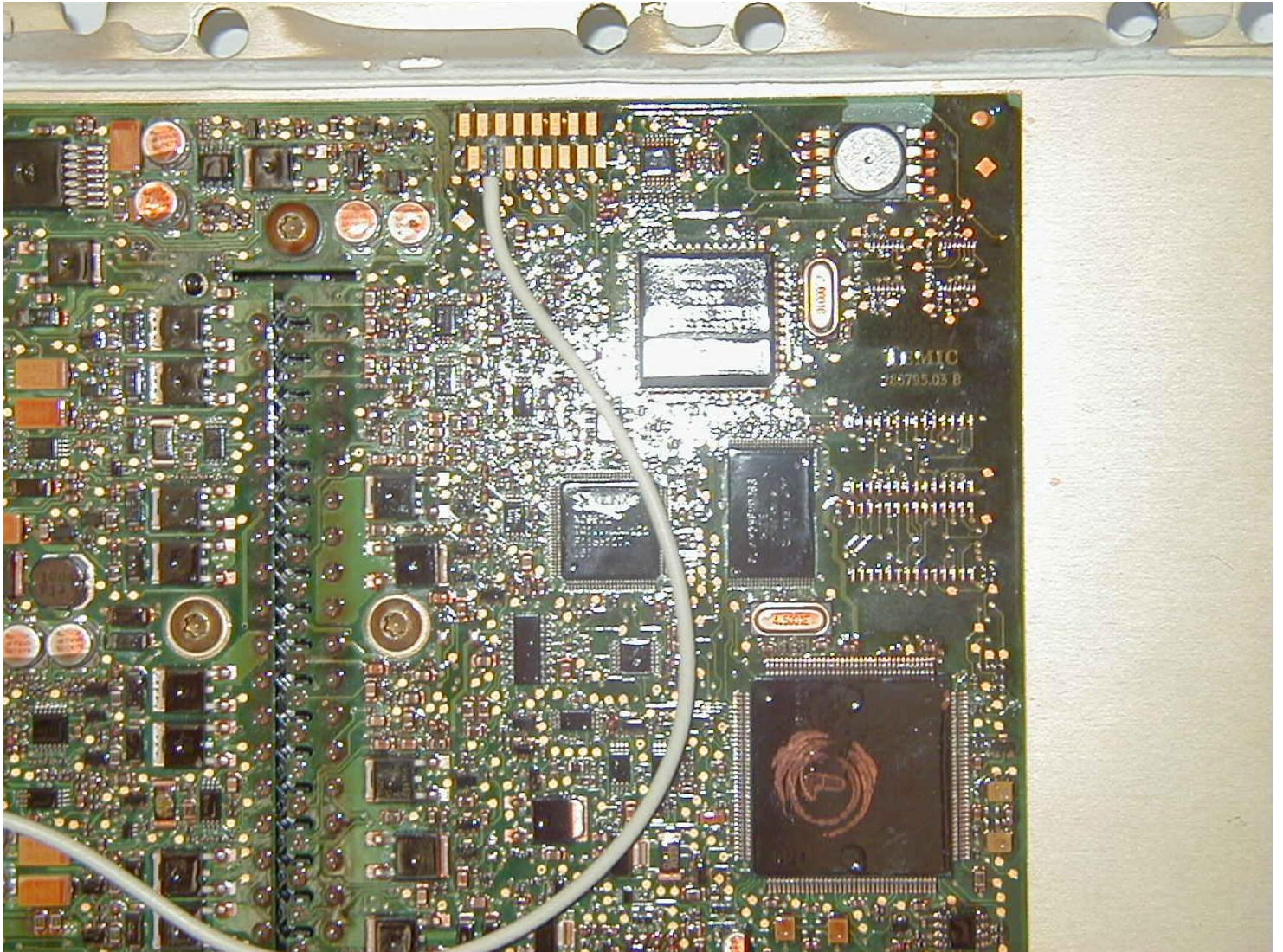


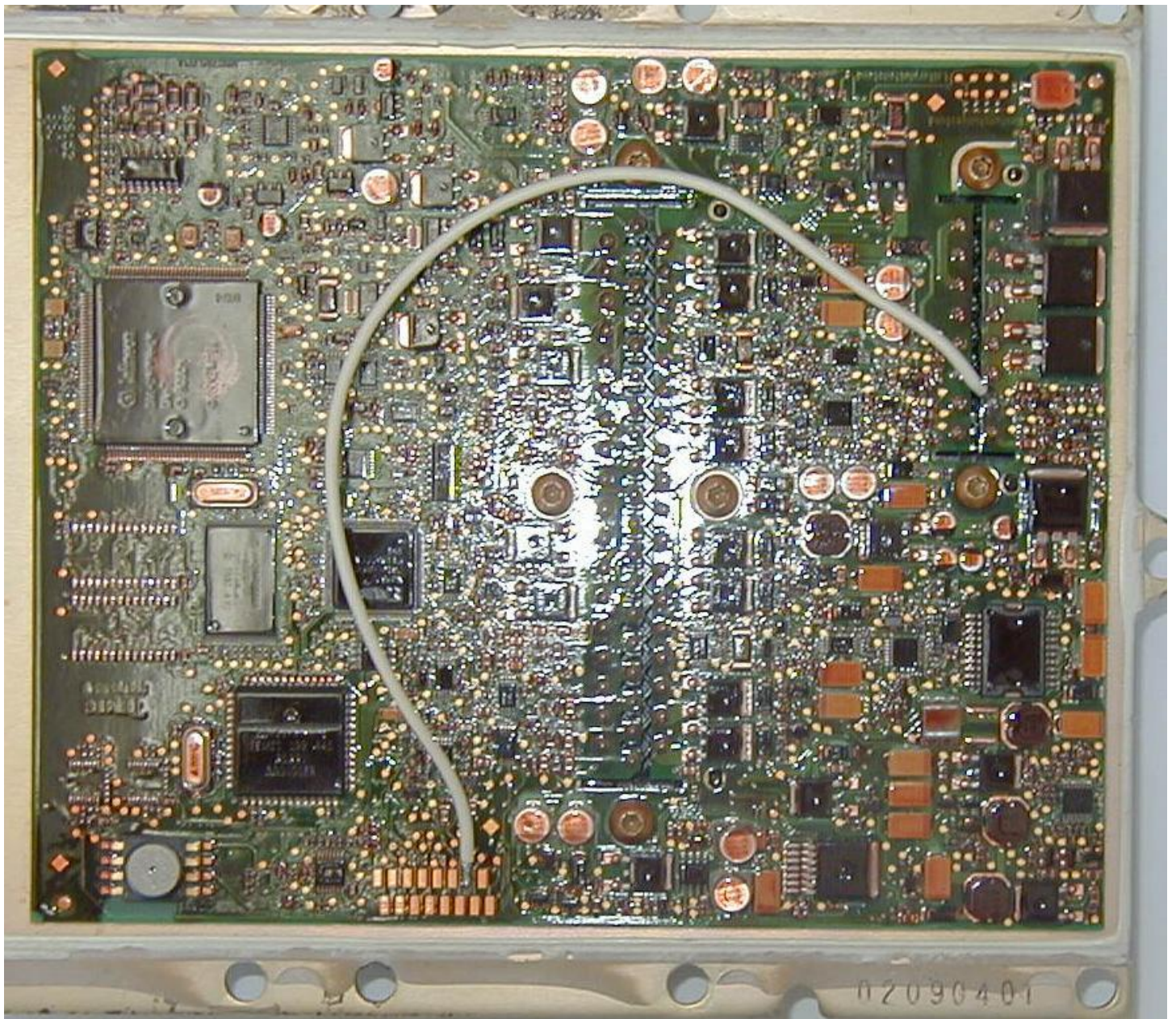
Connection from the pin 7 with 29F200 PSOP.





Connection from the pin 7 with 29F200 TSOP.





If the Wire wants to be left and close the ecu, use a silicon cable to the resistant to the high temperatures at least up to 100C°.

Perform the connection of the pin out like following picture for euro 1/2/3 29F200.

