

## TRANSTRON SH7055 ISUZU

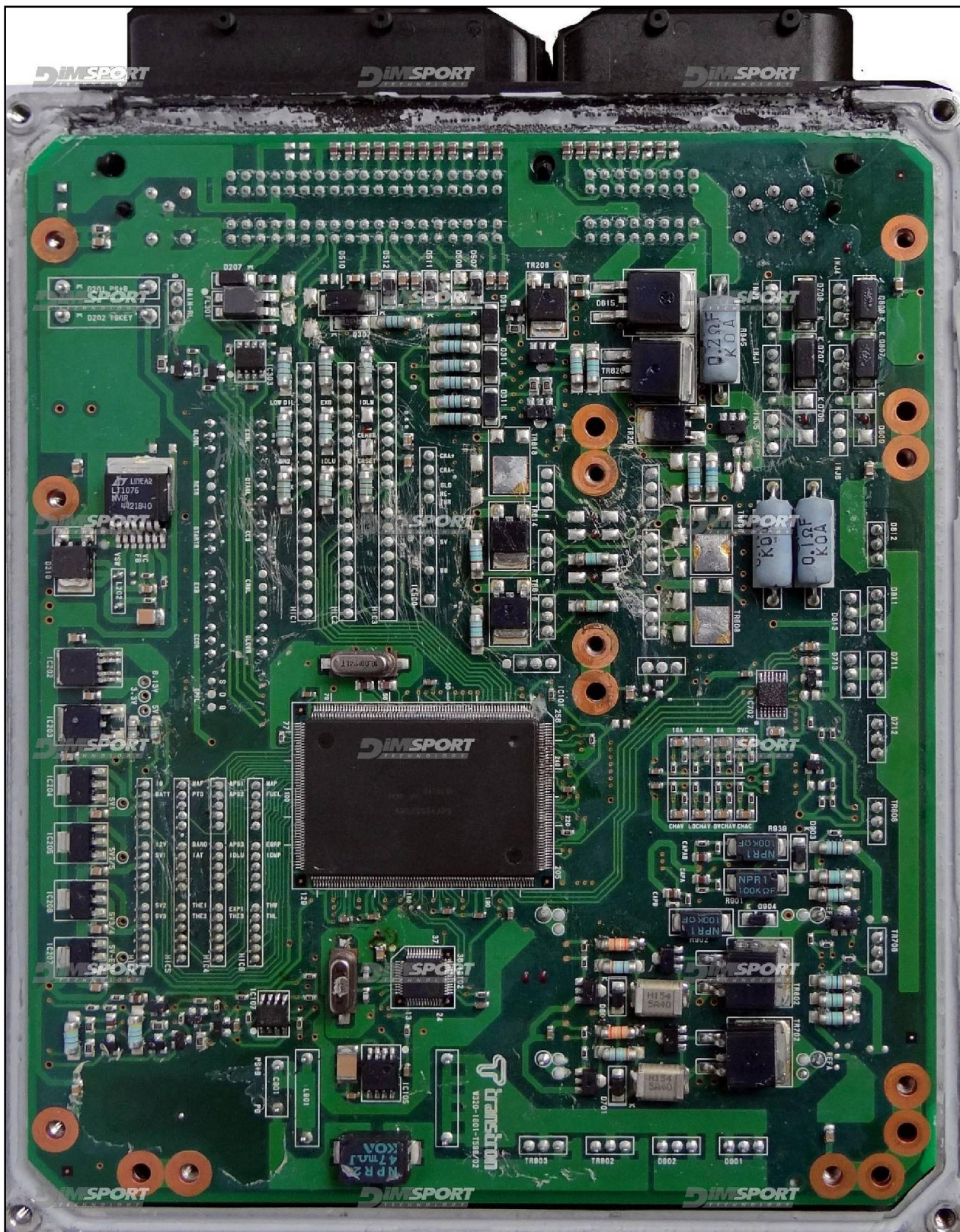
plugin **313**

**WARNING:** this ECU type can have 3 different motherboards, after the ECU opening please check if your one is TYPE 01, TYPE 02, TYPE 03



# TRANSTRON SH7055 ISUZU

ECU **TYPE 01** – reading & writing side

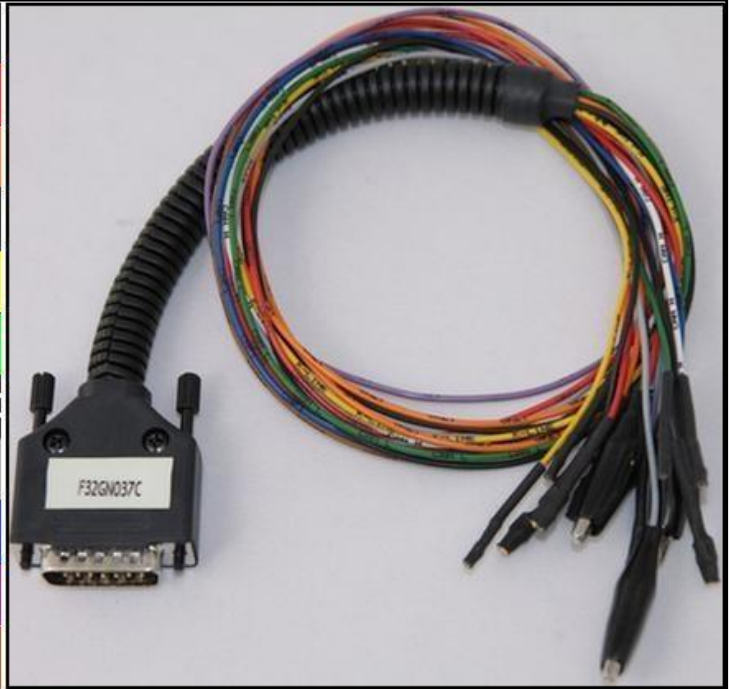


# TRANSTRON SH7055 ISUZU

## DIRECT CONNECTION

In order to connect to the ECU use the CABLE F32GN037C.  
Make sure that the POWER led (red) on Trasdata is ON.

COLORE FILO WIRE COLOUR		DESCRIZIONE DESCRIPTION
ROSSO RED		POSITIVO DIRETTO POWER BATTERY
ARANCIO ORANGE		POSITIVO SOTTO QUADRO POWER SWITCH ON
NERO BLACK		MASSA GND
GIALLO YELLOW		KLINE
VERDE GREEN		CAN LOW
BIANCO WHITE		CAN HIGH
GRIGIO GREY		POL4 BOOT
BLU BLUE		POL5 CNF1
VIOLA/GRIGIO PURPLE/GREY		TENSIONE PROG. PROG. VOLTAGE
MARRONE BROWN		RESET



## CONNECTOR ECU TYPE 01



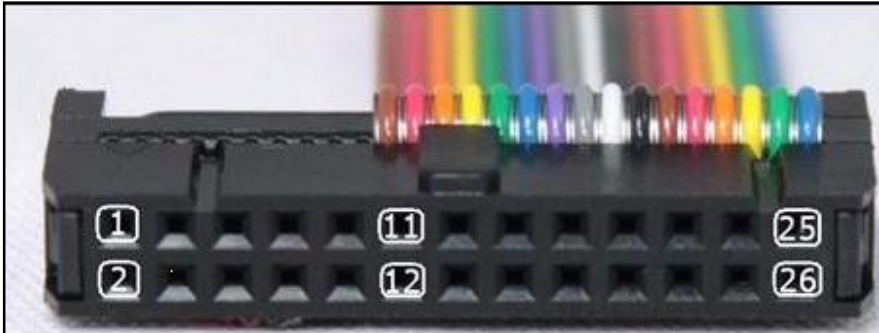
## WARNING :

on this ECU you must use two different flat cables: one is for the READING procedure and one is for the WRITING procedure.

## TRANSTRON SH7055 ISUZU

### **DIRECT CONNECTION – ECU READING:**

For the READING procedure use the FLAT cable F34NTF53



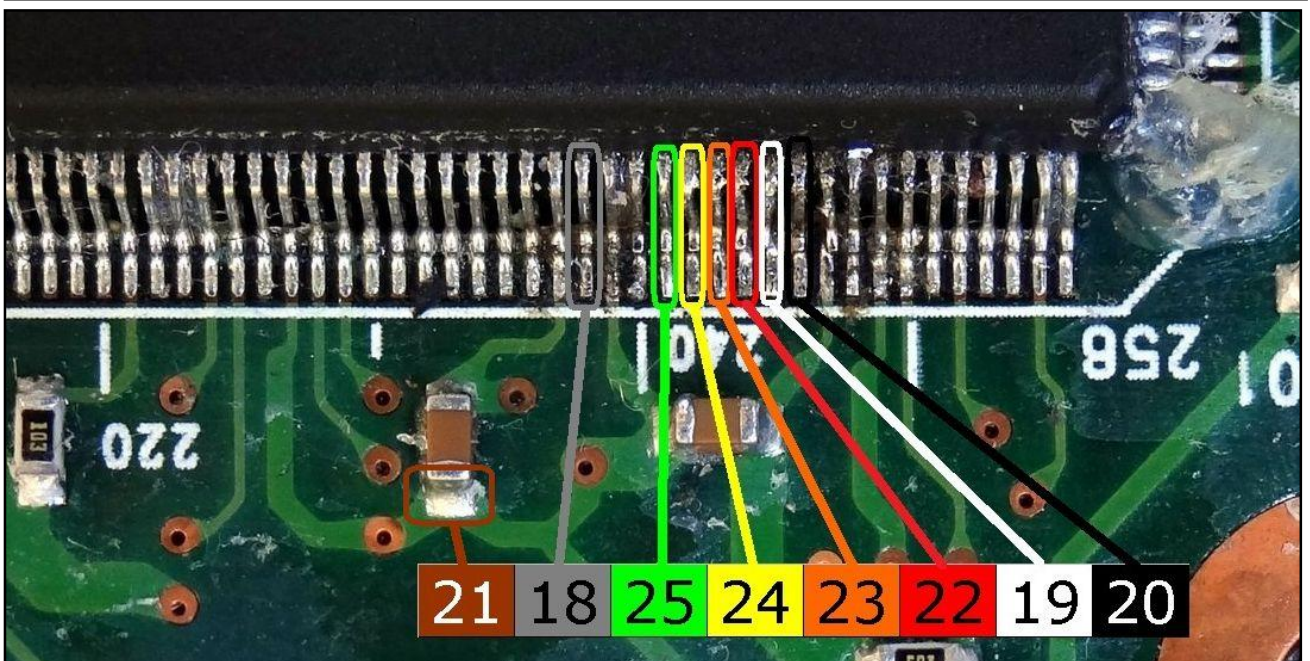
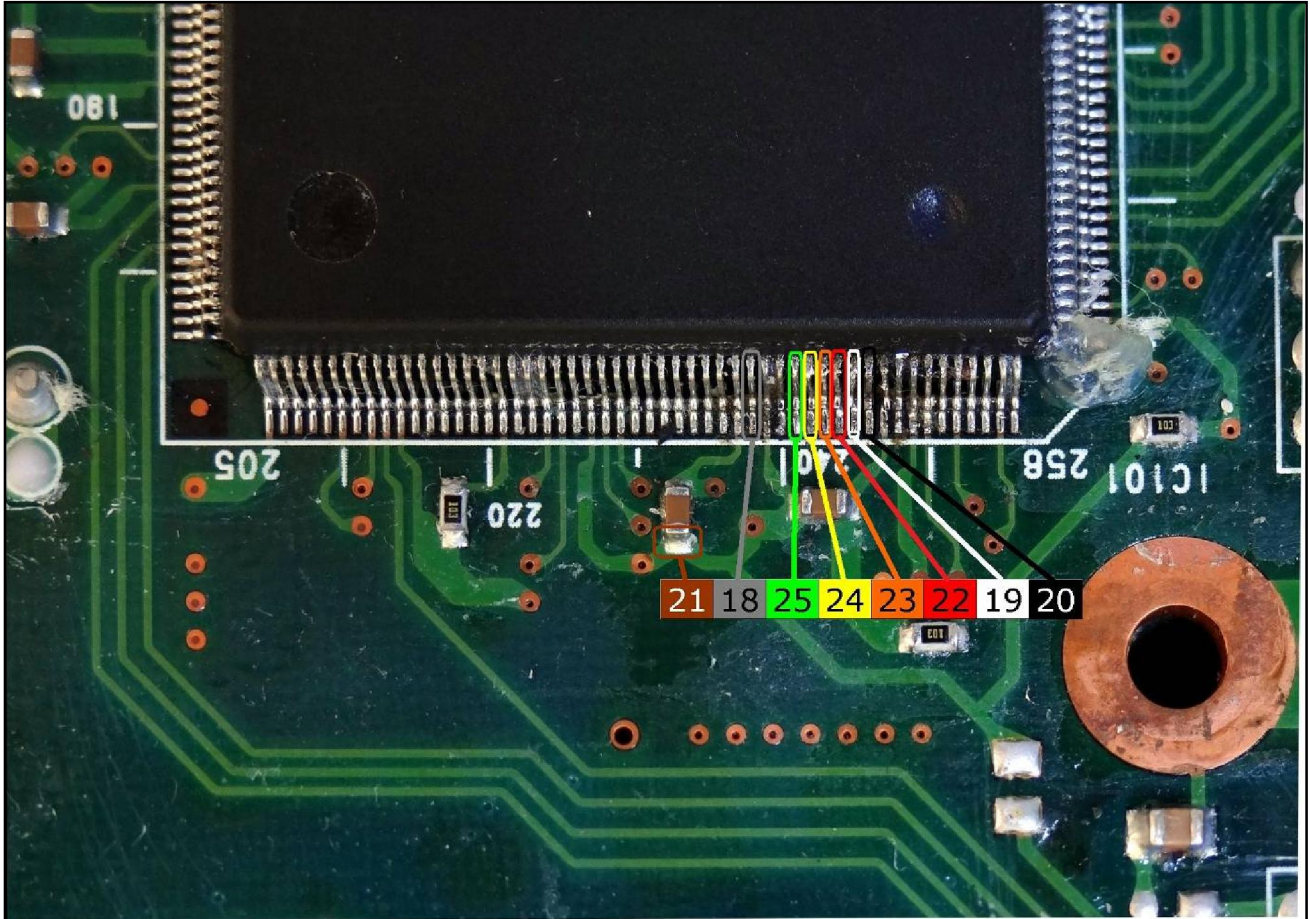
Pin	Colore Colour
11	Non usato Not used
12	Non usato Not used
13	Non usato Not used
14	Non usato Not used
15	Non usato Not used
16	Non usato Not used
17	Non usato Not used
18	Grigio Grey
19	Bianco White
20	Nero Black
21	Marrone Brown
22	Rosso Red
23	Arancio Orange
24	Giallo Yellow
25	Verde Green
26	Non usato Not used



# TRANSTRON SH7055 ISUZU

## TYPE 01

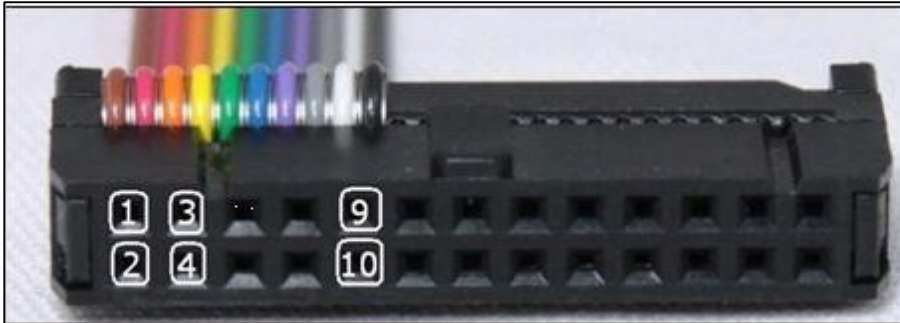
**WARNING:** for the reading procedure it is necessary to connect directly to the pins of the MICRO.



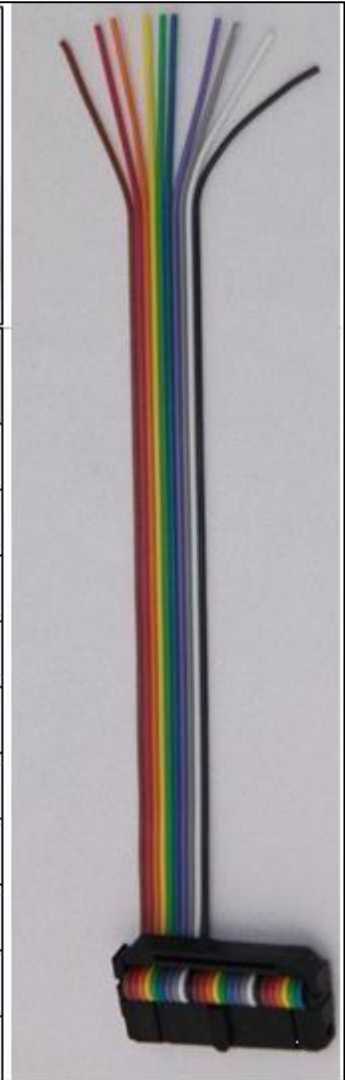
## TRANSTRON SH7055 ISUZU

### **DIRECT CONNECTION – ECU WRITING:**

For the WRITING procedure use the FLAT cable F34NTF51



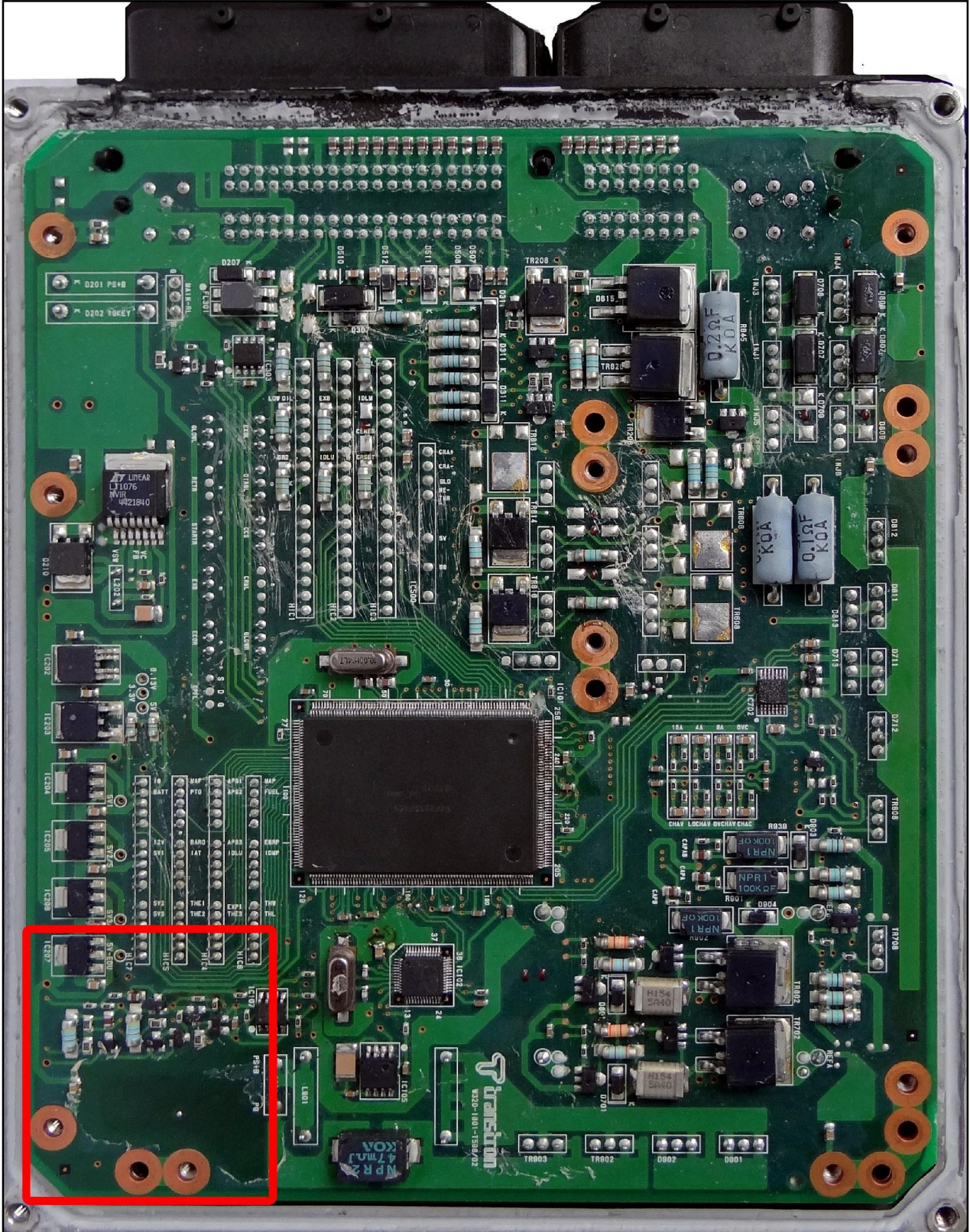
Pin	Colore Colour
1	Non usato Not used
2	Non usato Not used
3	Non usato Not used
4	Non usato Not used
5	Verde Green
6	Blu Blue
7	Viola Violet
8	Grigio Grey
9	Non usato Not used
10	Non usato Not used



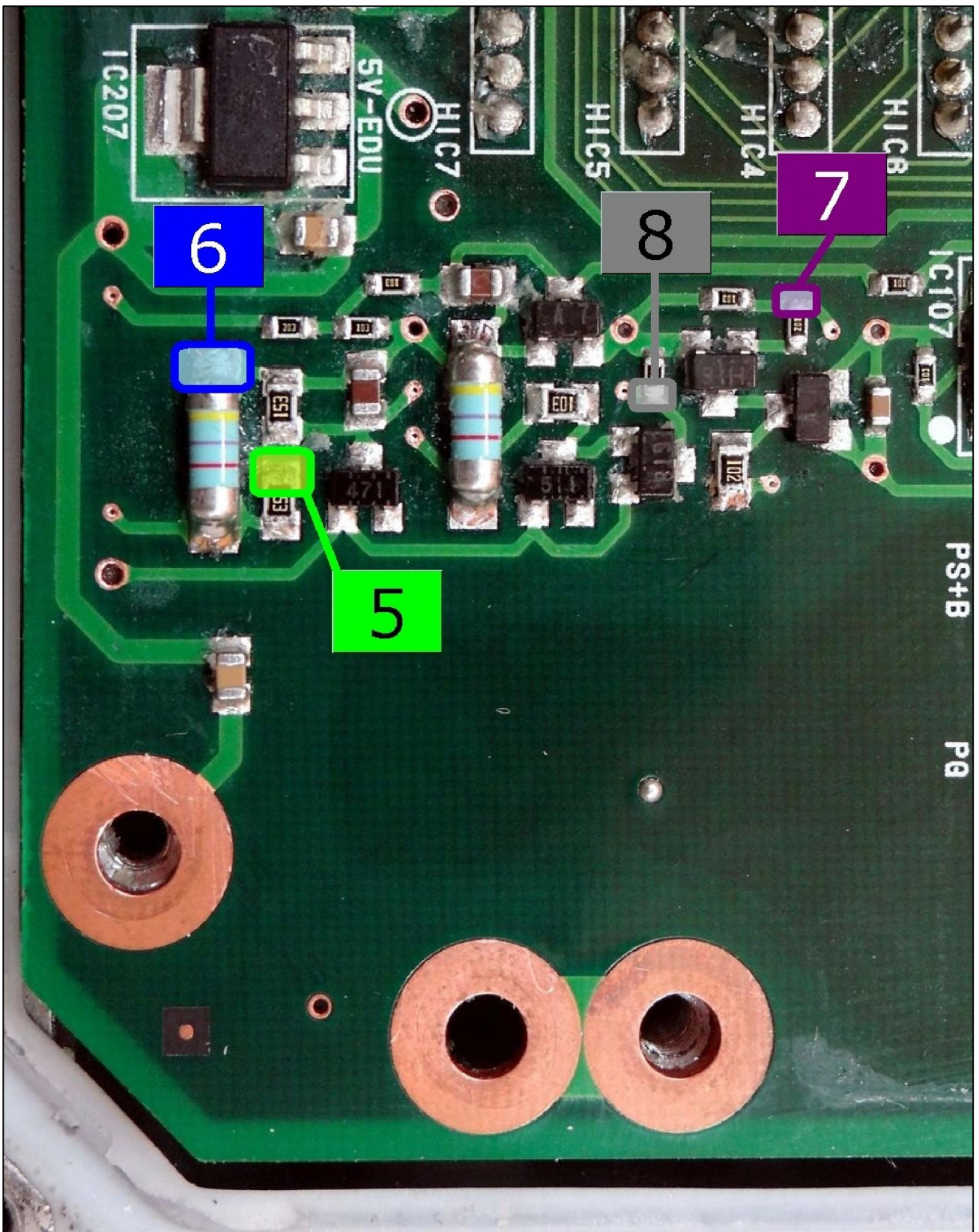
# TRANSTRON SH7055 ISUZU

## TYPE 01:

all the required pads and connections are placed in the red square shown in the picture here below:



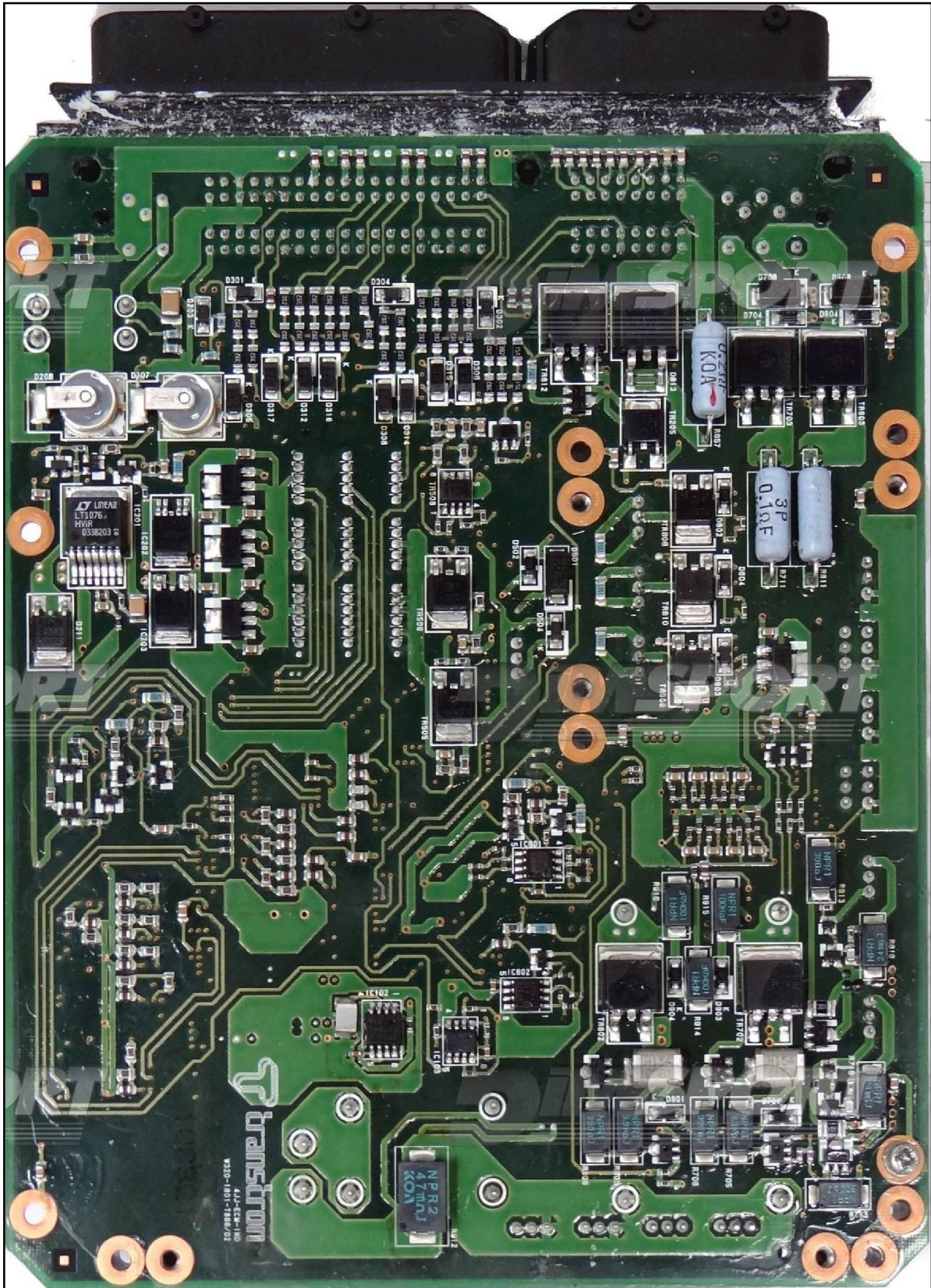
TRANSTRON SH7055 ISUZU





# TRANSTRON SH7055 ISUZU

ECU **TYPE 02** reading&writing side

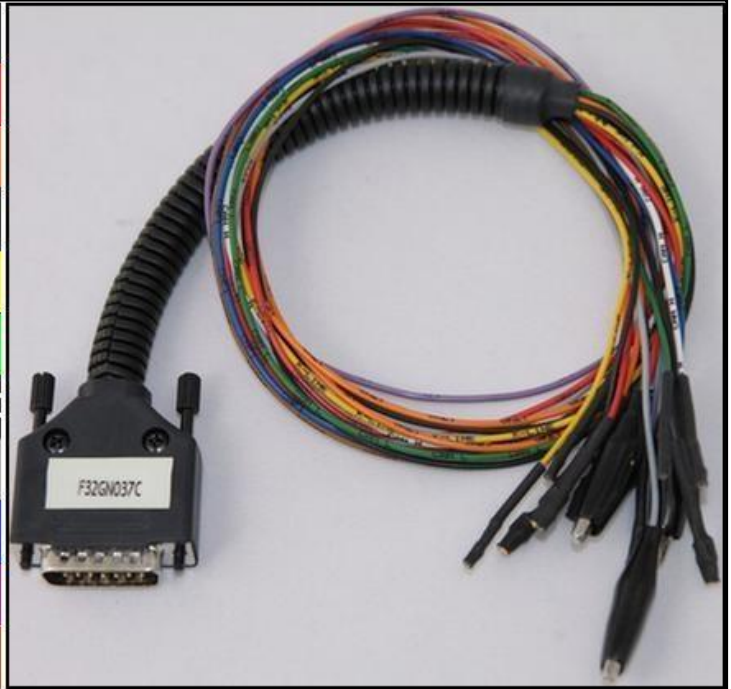


## TRANSTRON SH7055 ISUZU

### DIRECT CONNECTION

In order to connect to the ECU use the CABLE F32GN037C.  
Make sure that the POWER led (red) on Trasdata is ON.

COLORE FILO WIRE COLOUR		DESCRIZIONE DESCRIPTION
ROSSO RED		POSITIVO DIRETTO POWER BATTERY
ARANCIO ORANGE		POSITIVO SOTTO QUADRO POWER SWITCH ON
NERO BLACK		MASSA GND
GIALLO YELLOW		KLINE
VERDE GREEN		CAN LOW
BIANCO WHITE		CAN HIGH
GRIGIO GREY		POL4 BOOT
BLU BLUE		POL5 CNF1
VIOLA/GRIGIO PURPLE/GREY		TENSIONE PROG. PROG. VOLTAGE
MARRONE BROWN		RESET



### CONNECTOR ECU TYPE 02



### WARNING :

on this ECU you must use two different flat cables: one is for the READING procedure and one is for the WRITING procedure.

## TRANSTRON SH7055 ISUZU

### **DIRECT CONNECTION – ECU READING:**

For the READING procedure use the FLAT cable F34NTF53



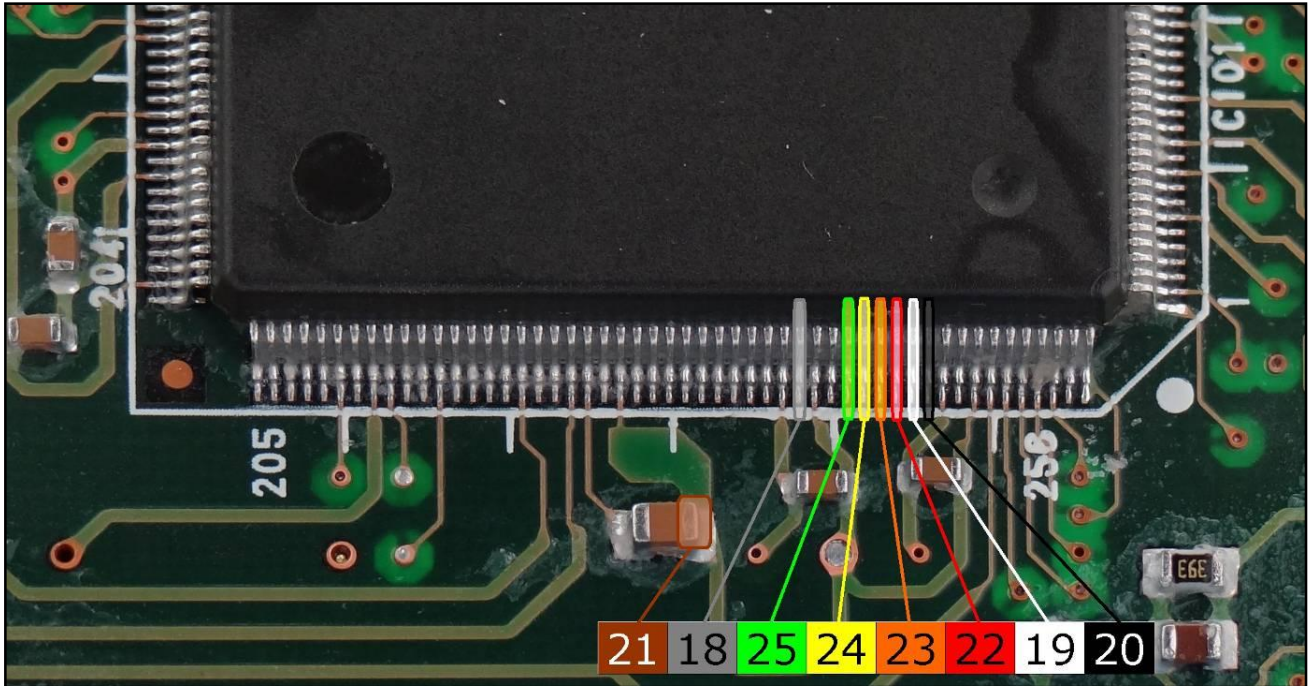
Pin	Colore Colour
11	Non usato Not used
12	Non usato Not used
13	Non usato Not used
14	Non usato Not used
15	Non usato Not used
16	Non usato Not used
17	Non usato Not used
18	Grigio Grey
19	Bianco White
20	Nero Black
21	Marrone Brown
22	Rosso Red
23	Arancio Orange
24	Giallo Yellow
25	Verde Green
26	Non usato Not used



## TRANSTRON SH7055 ISUZU

### TYPE 02

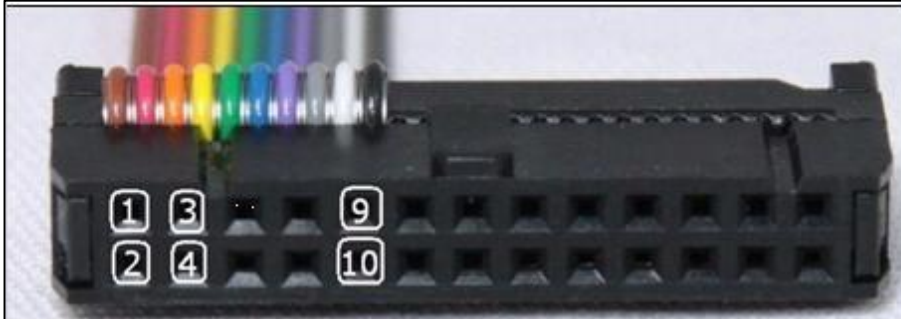
**WARNING:** for the reading procedure it is necessary to connect directly to the pins of the MICRO.



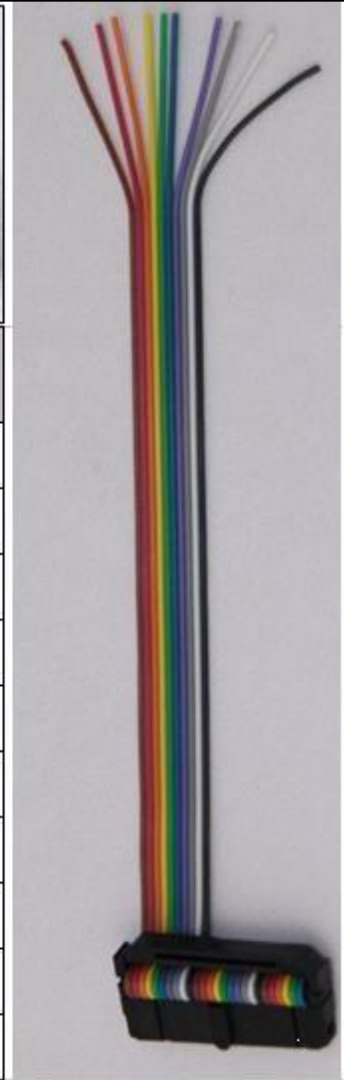
## TRANSTRON SH7055 ISUZU

### **DIRECT CONNECTION – ECU WRITING:**

For the WRITING procedure use the FLAT cable F34NTF51



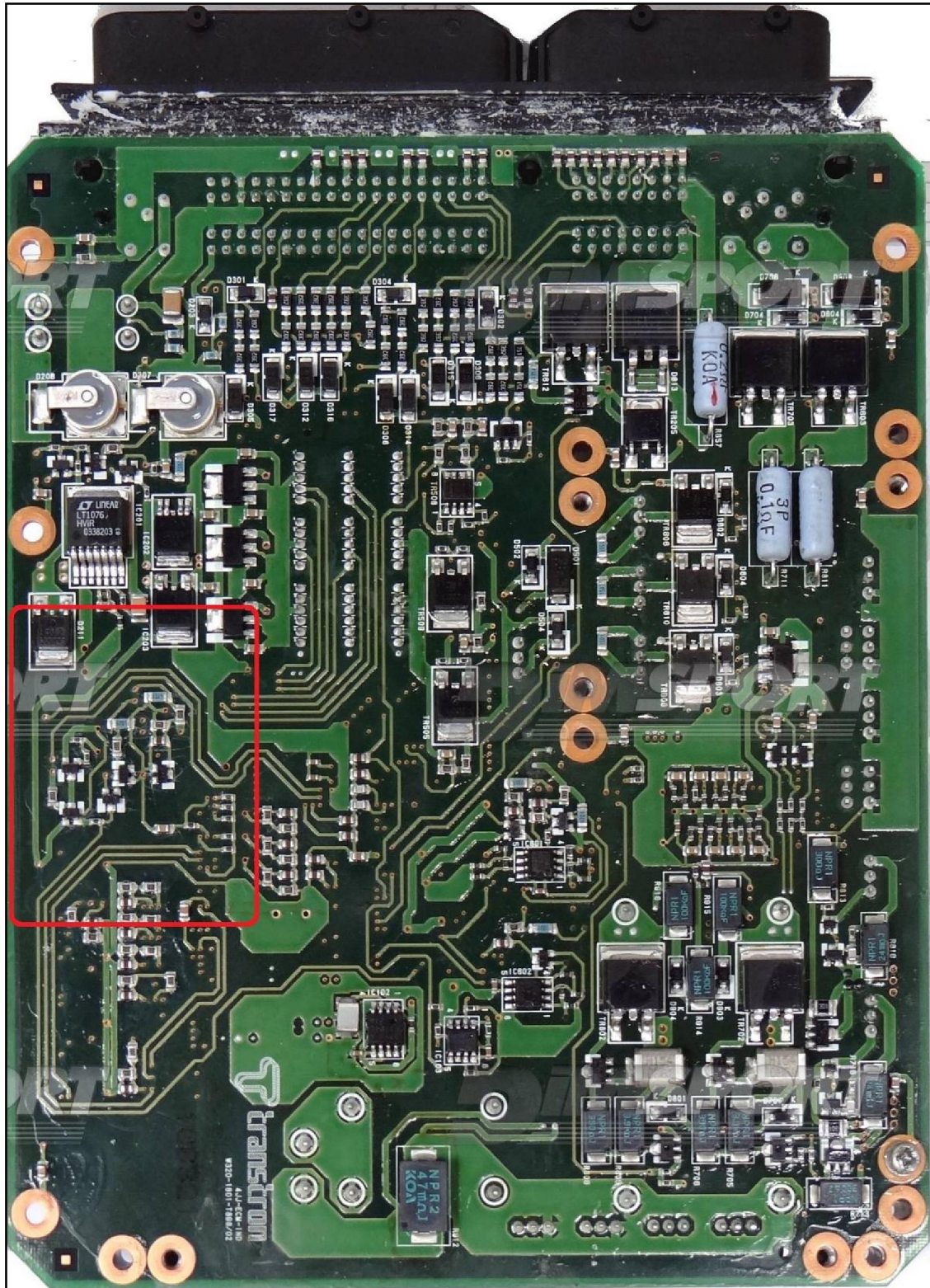
Pin	Colore Colour
1	Non usato Not used
2	Non usato Not used
3	Non usato Not used
4	Non usato Not used
5	Verde Green
6	Blu Blue
7	Viola Violet
8	Grigio Grey
9	Non usato Not used
10	Non usato Not used



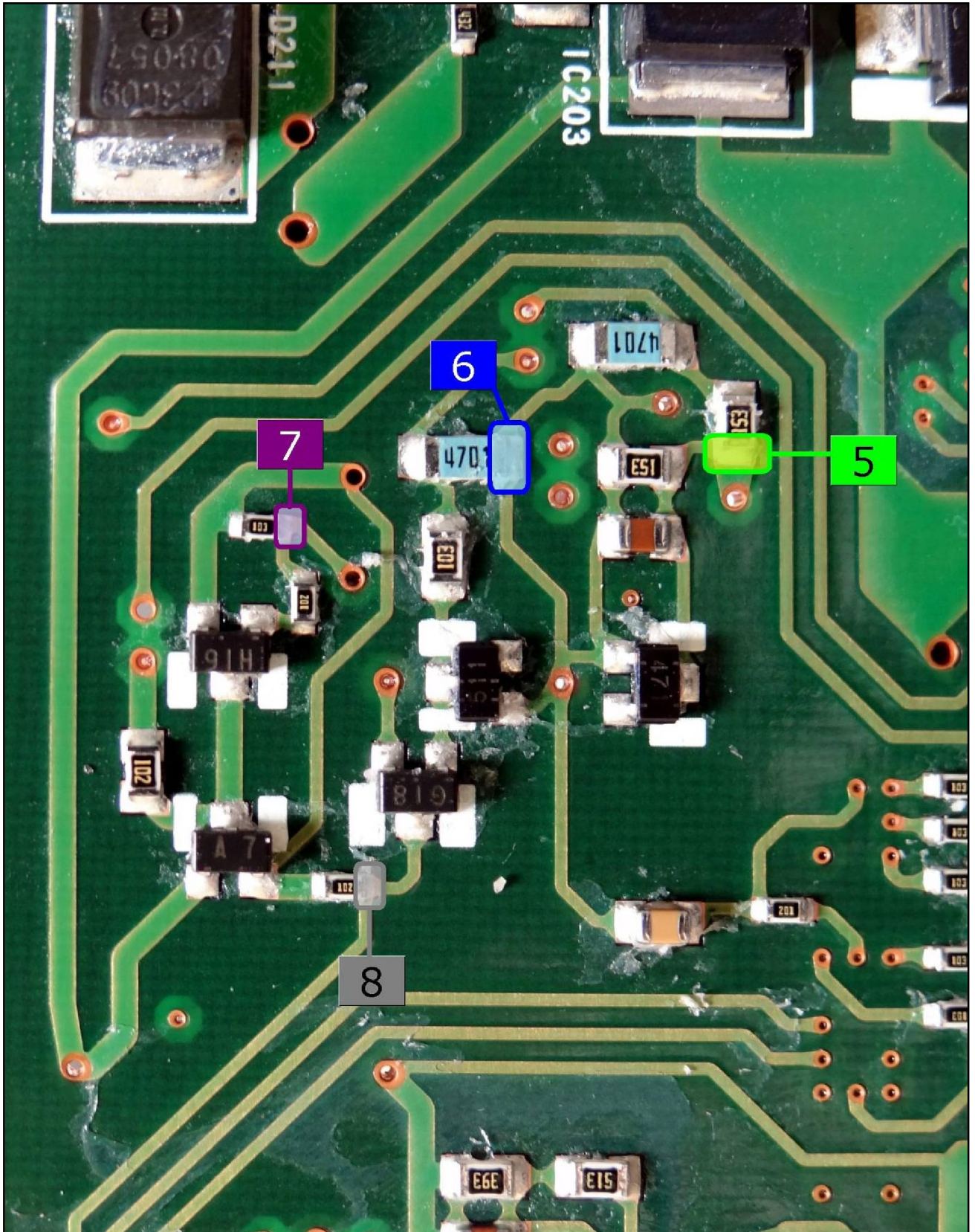
## TRANSTRON SH7055 ISUZU

### TYPE 02:

all the required pads and connections are placed in the red square shown in the picture here below:

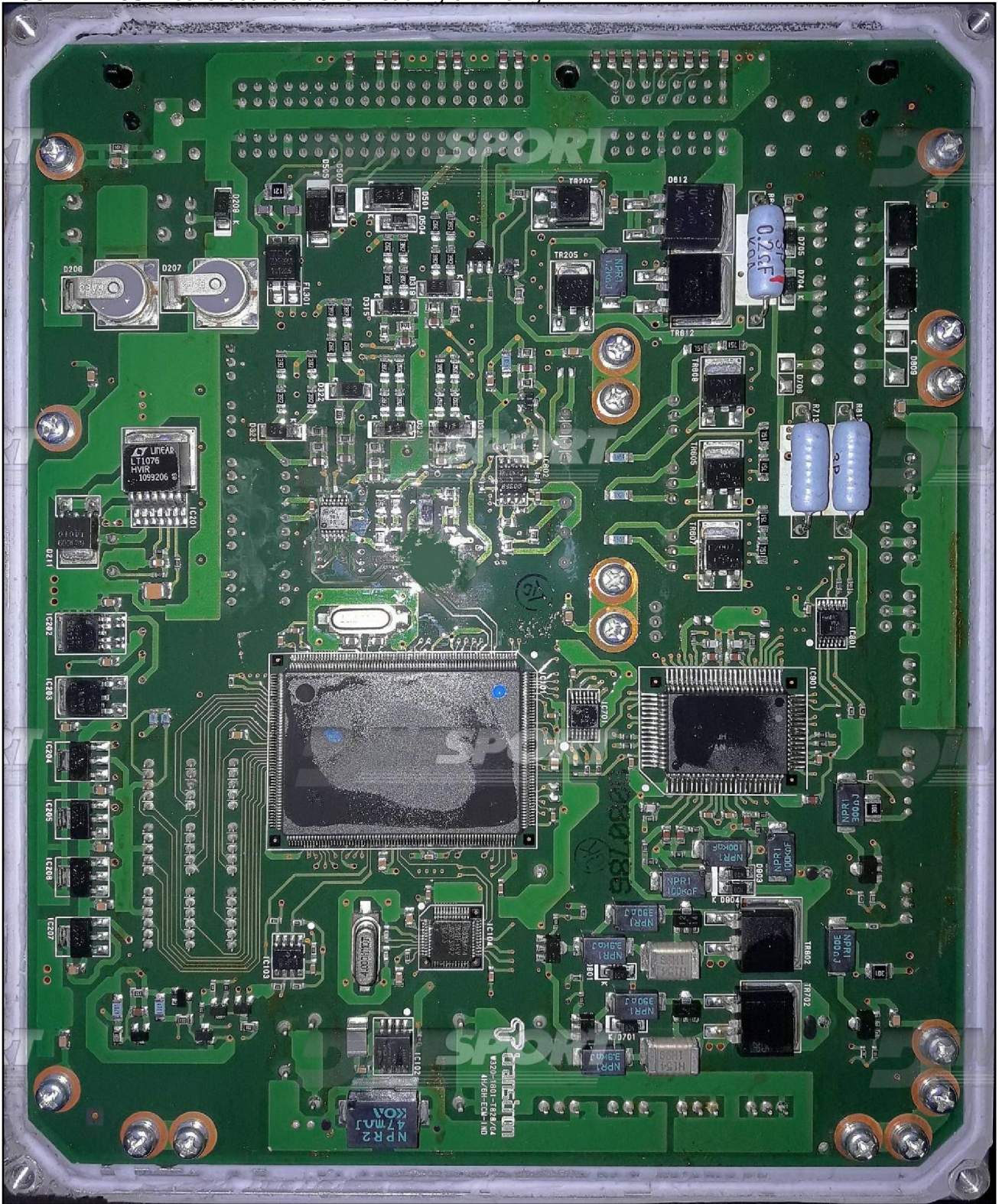


TRANSTRON SH7055 ISUZU



# TRANSTRON SH7055 ISUZU

ECU TYPE 03 motherboard side for reading & writing



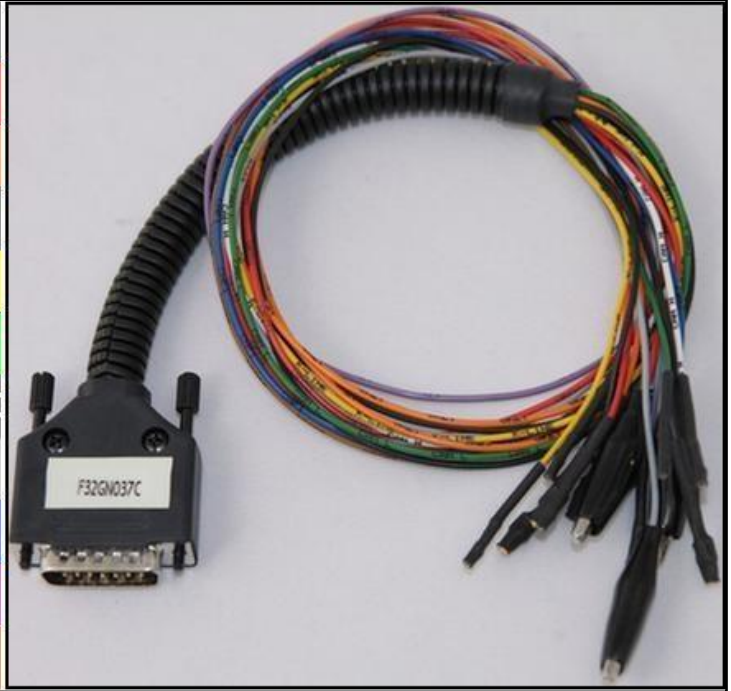


## TRANSTRON SH7055 ISUZU

### DIRECT CONNECTION

In order to connect to the ECU use the CABLE F32GN037C.  
Make sure that the POWER led (red) on Trasdata is ON.

COLORE FILO WIRE COLOUR	DESCRIZIONE DESCRIPTION
ROSSO RED	POSITIVO DIRETTO POWER BATTERY
ARANCIO ORANGE	POSITIVO SOTTO QUADRO POWER SWITCH ON
NERO BLACK	MASSA GND
GIALLO YELLOW	KLINE
VERDE GREEN	CAN LOW
BIANCO WHITE	CAN HIGH
GRIGIO GREY	POL4 BOOT
BLU BLUE	POL5 CNF1
VIOLA/GRIGIO PURPLE/GREY	TENSIONE PROG. PROG. VOLTAGE
MARRONE BROWN	RESET



### CONNECTOR ECU TYPE 03



### WARNING :

on this ECU you must use two different flat cables: one is for the READING procedure and one is for the WRITING procedure.

## TRANSTRON SH7055 ISUZU

### **DIRECT CONNECTION – ECU READING:**

For the READING procedure use the FLAT cable F34NTF53



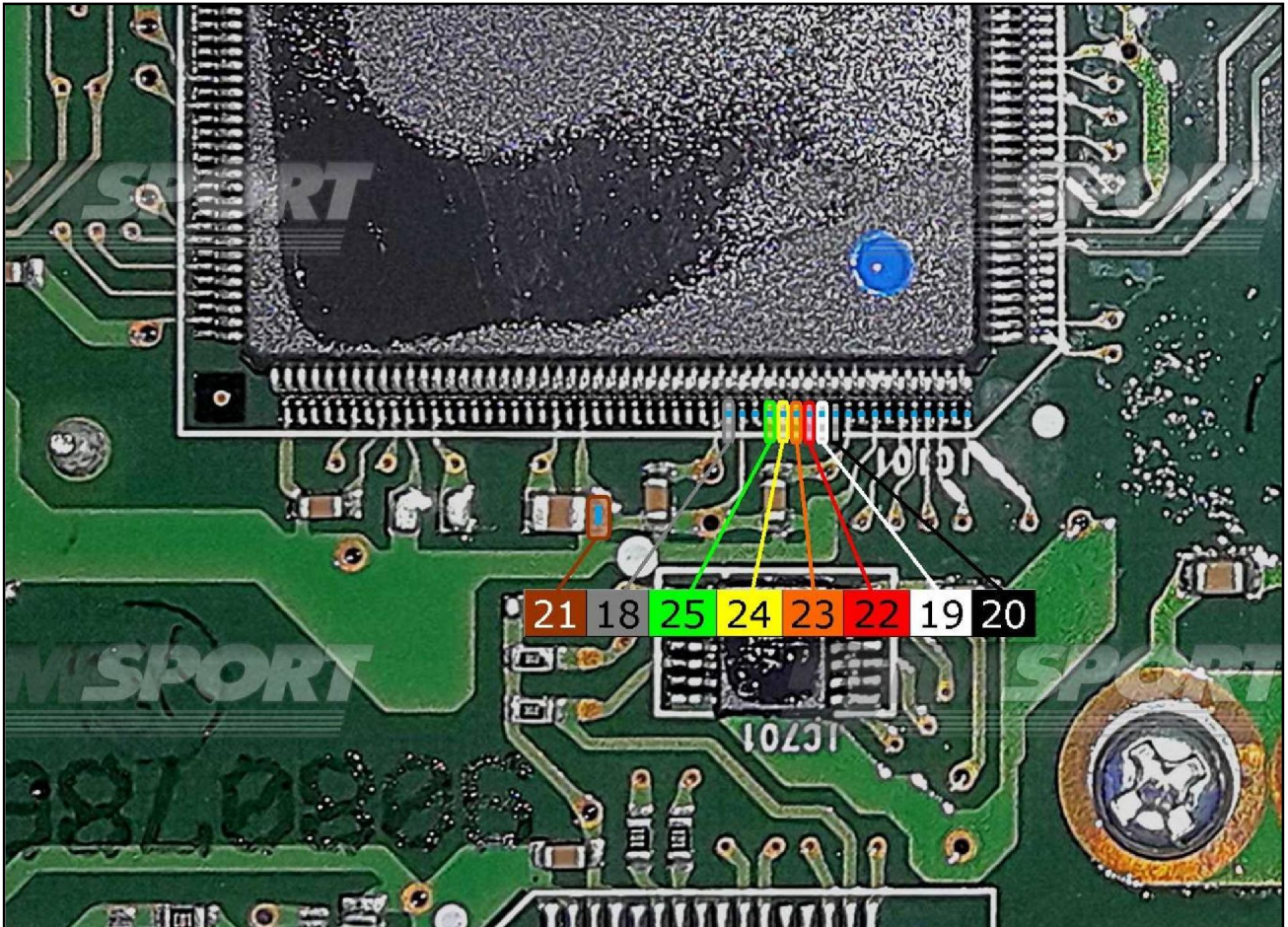
Pin	Colore Colour
11	Non usato Not used
12	Non usato Not used
13	Non usato Not used
14	Non usato Not used
15	Non usato Not used
16	Non usato Not used
17	Non usato Not used
18	Grigio Grey
19	Bianco White
20	Nero Black
21	Marrone Brown
22	Rosso Red
23	Arancio Orange
24	Giallo Yellow
25	Verde Green
26	Non usato Not used



## TRANSTRON SH7055 ISUZU

### TYPE 03

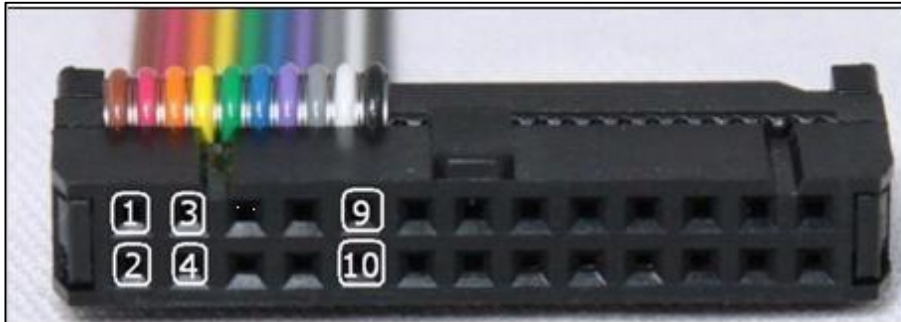
**WARNING:** for the reading procedure it is necessary to connect directly to the pins of the MICRO.



## TRANSTRON SH7055 ISUZU

### **DIRECT CONNECTION – ECU WRITING:**

For the WRITING procedure use the FLAT cable F34NTF51



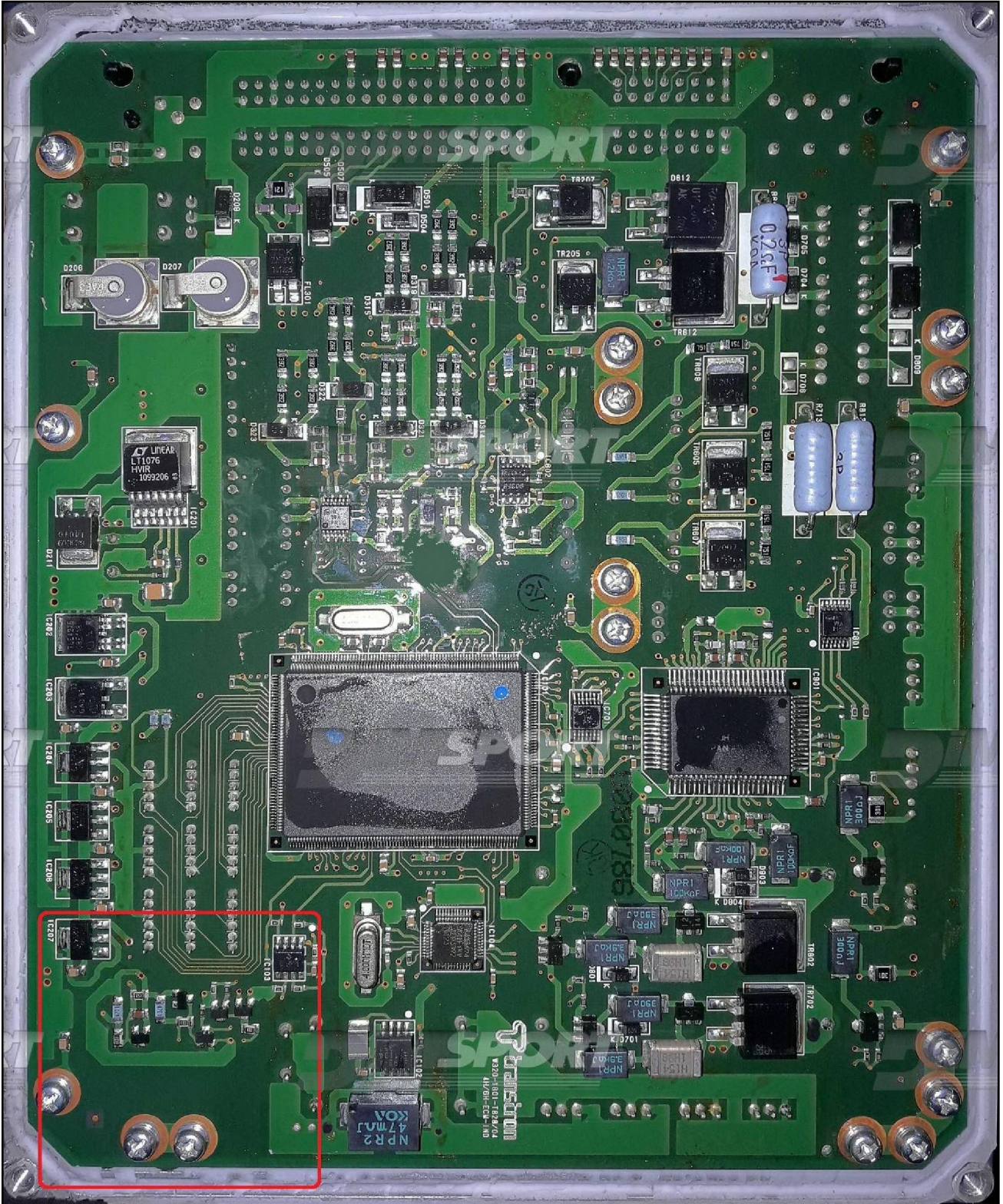
Pin	Colore Colour
1	Non usato Not used
2	Non usato Not used
3	Non usato Not used
4	Non usato Not used
5	Verde Green
6	Blu Blue
7	Viola Violet
8	Grigio Grey
9	Non usato Not used
10	Non usato Not used



# TRANSTRON SH7055 ISUZU

## TYPE 03:

all the required pads and connections are placed in the red square shown in the picture here below:



TRANSTRON SH7055 ISUZU

