

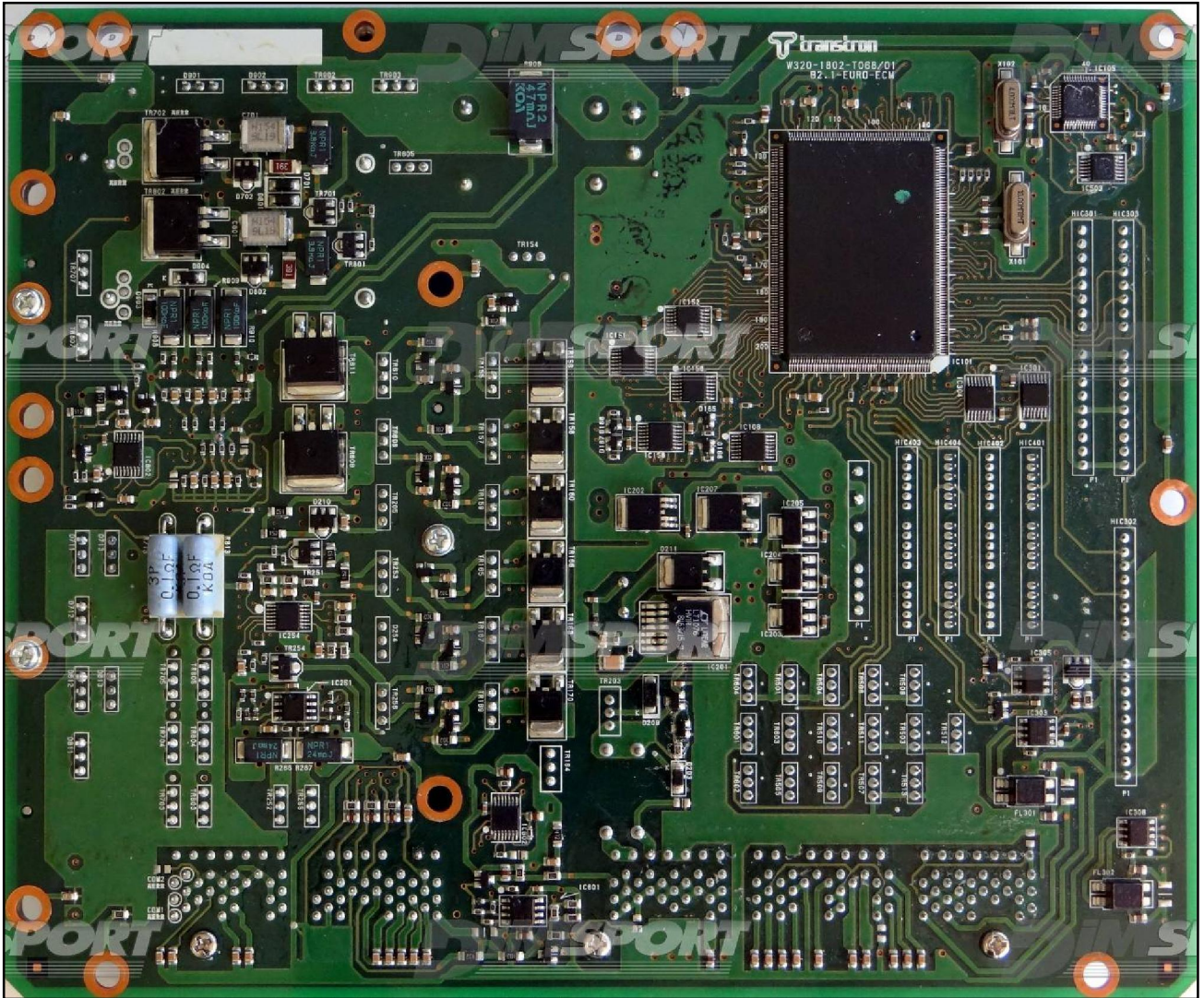
TRANSTRON SH7058 6HK1 6UK ISUZU

plugin 977



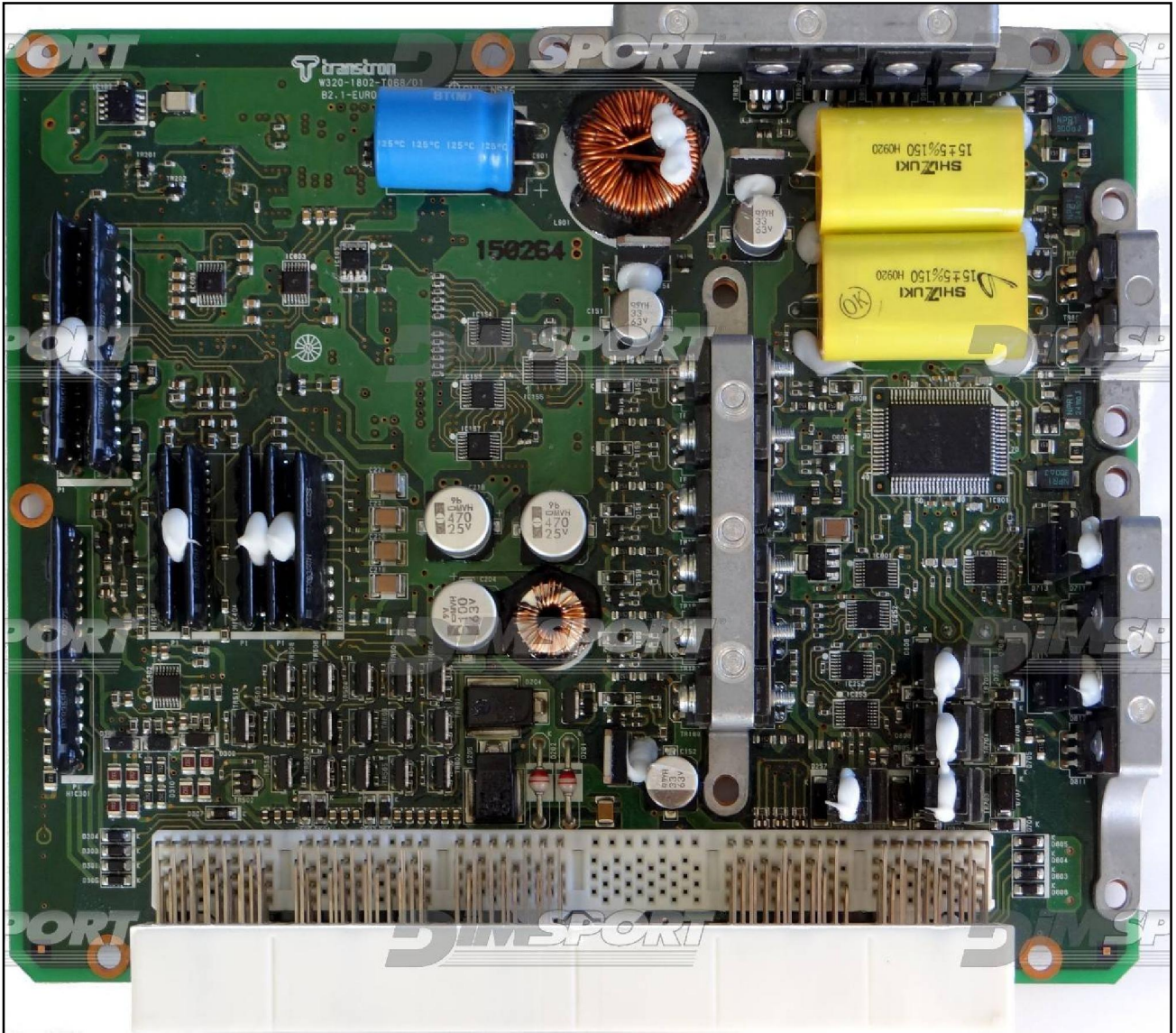
TRANSTRON SH7058 6HK1 6UK ISUZU

ECU side for reading



TRANSTRON SH7058 6HK1 6UK ISUZU

ECU side for writing



## TRANSTRON SH7058 6HK1 6UK ISUZU

### DIRECT CONNECTION

In order to connect to the ECU use the cable F32GN037C.  
Make sure that the POWER led (red) on Trasdata is ON.

COLORE FILO WIRE COLOUR		DESCRIZIONE DESCRIPTION
ROSSO RED		POSITIVO DIRETTO POWER BATTERY
ARANCIO ORANGE		POSITIVO SOTTO QUADRO POWER SWITCH ON
NERO BLACK		MASSA GND
GIALLO YELLOW		KLINE
VERDE GREEN		CAN LOW
BIANCO WHITE		CAN HIGH
GRIGIO GREY		POL4 BOOT
BLU BLUE		POL5 CNF1
VIOLA/GRIGIO PURPLE/GREY		TENSIONE PROG. PROG. VOLTAGE
MARRONE BROWN		RESET



### ECU CONNECTOR



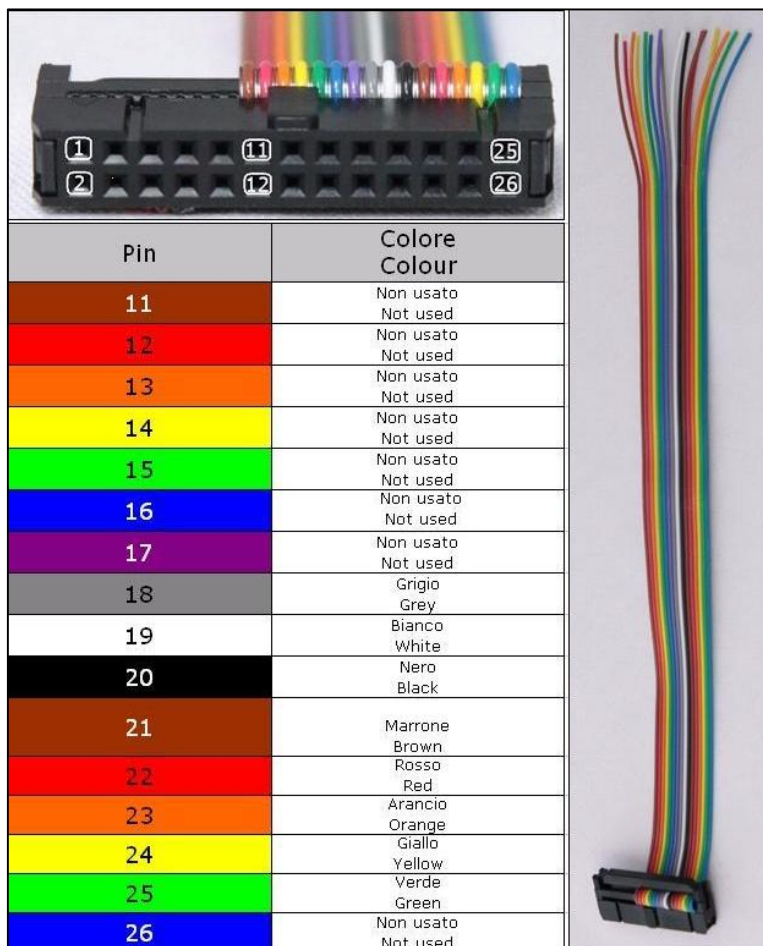
### WARNING :

on this ECU you must use two different flat cables: one is for the READING procedure and one is for the WRITING procedure.

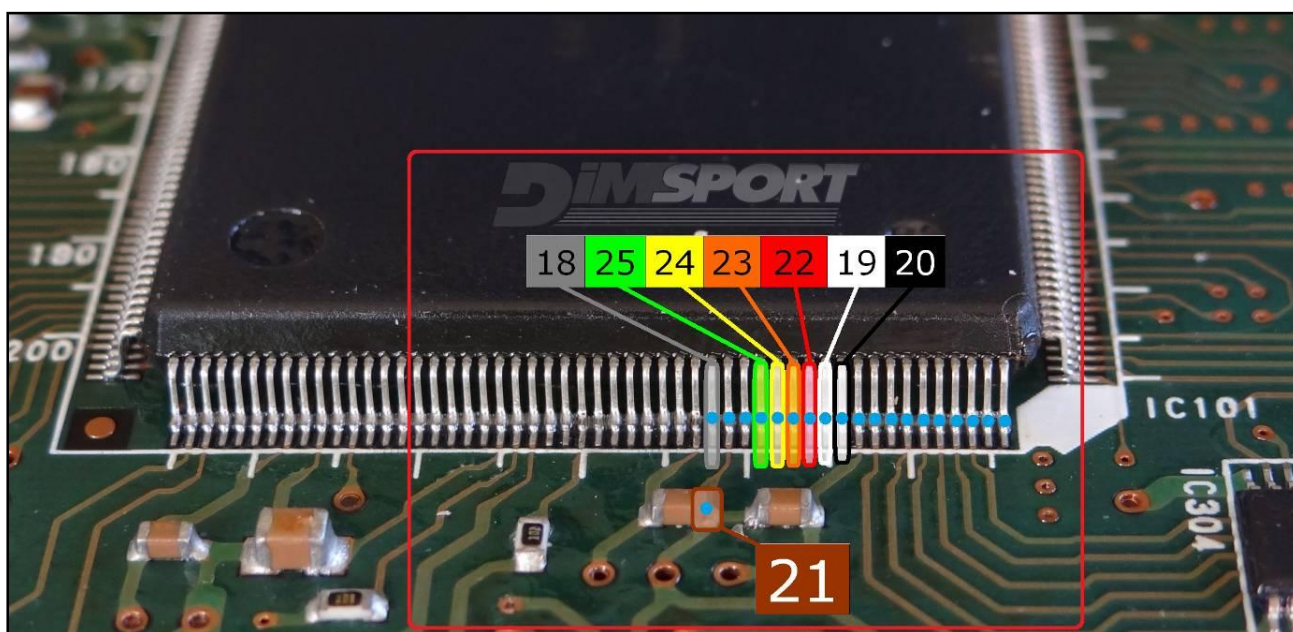
## TRANSTRON SH7058 6HK1 6UK ISUZU

### DIRECT CONNECTION – ECU READING

For the READING procedure use the FLAT cable F34NTF53



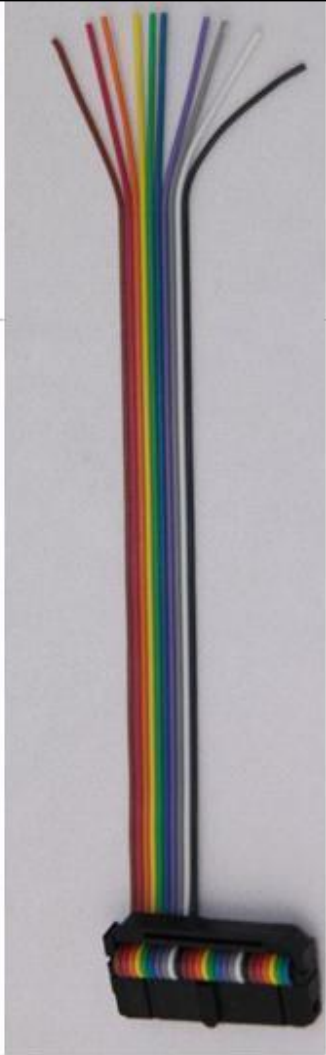
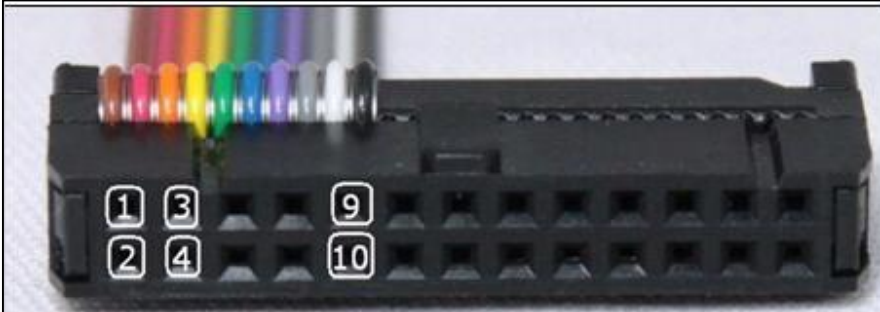
Pin	Colore Colour
11	Non usato Not used
12	Non usato Not used
13	Non usato Not used
14	Non usato Not used
15	Non usato Not used
16	Non usato Not used
17	Non usato Not used
18	Grigio Grey
19	Bianco White
20	Nero Black
21	Marrone Brown
22	Rosso Red
23	Arancio Orange
24	Giallo Yellow
25	Verde Green
26	Non usato Not used



## TRANSTRON SH7058 6HK1 6UK ISUZU

### **DIRECT CONNECTION – ECU WRITING**

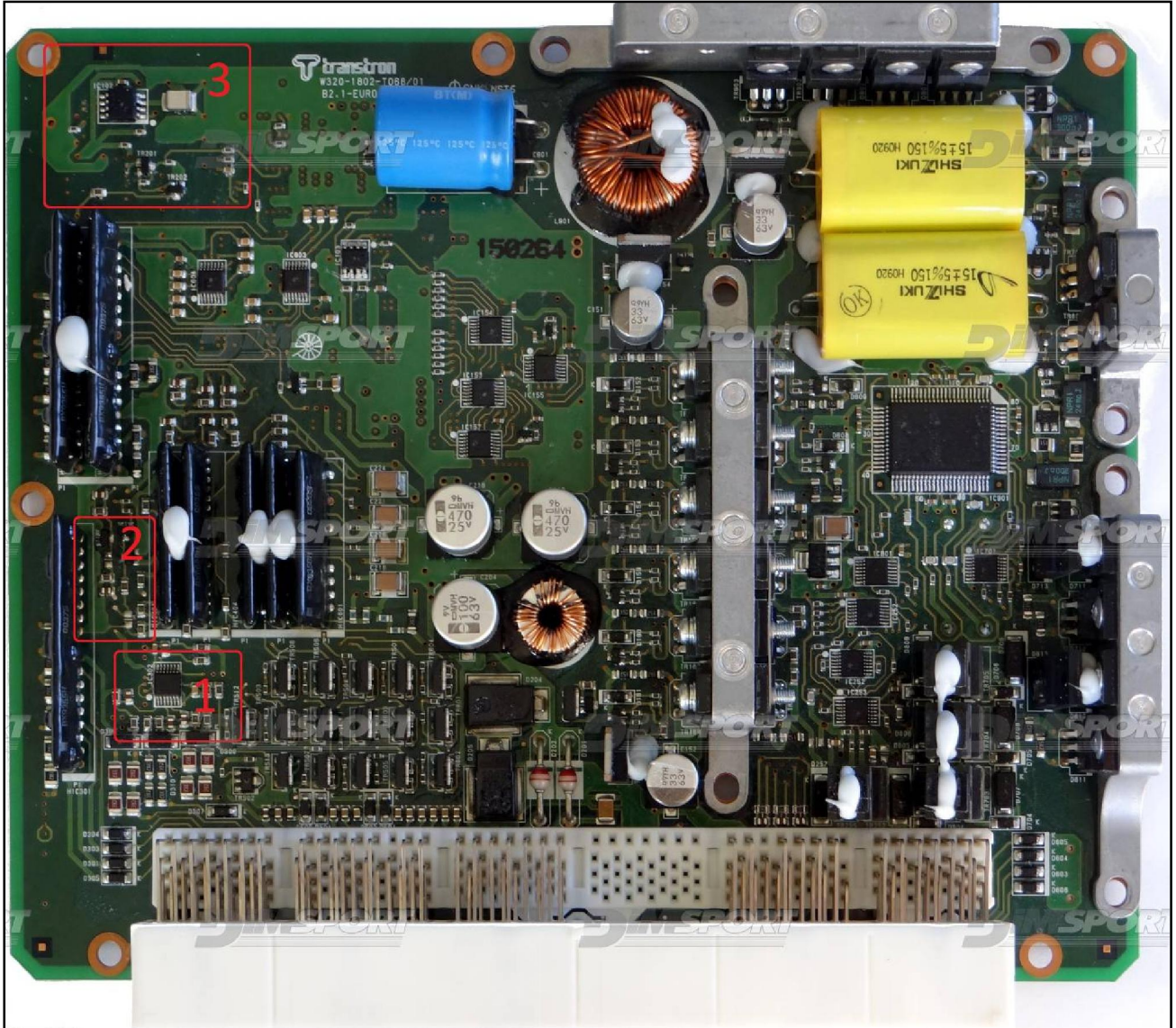
For the WRITING procedure use the FLAT cable F34NTF51



Pin	Colore Colour
1	Marrone Brown
2	Non usato Not used
3	Non usato Not used
4	Giallo Yellow
5	Verde Green
6	Blu Blue
7	Viola Violet
8	Grigio Grey
9	Bianco White
10	Nero Black

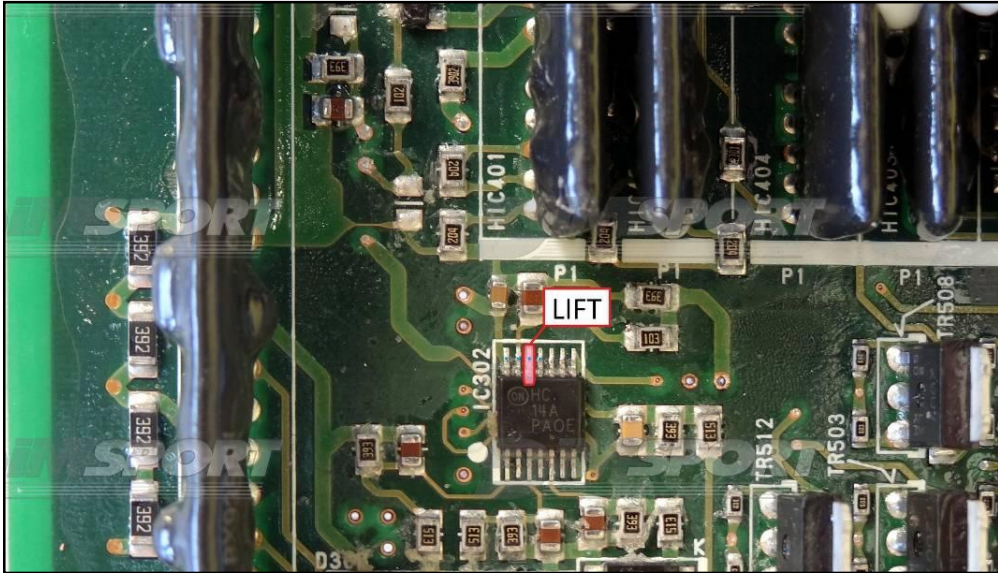
## TRANSTRON SH7058 6HK1 6UK ISUZU

In order to perform the connection it is necessary to desolder and lift a pin of the IC302 component present in the zone 1 of the picture here below.  
Then connect the wires of the zone 2 and 3.

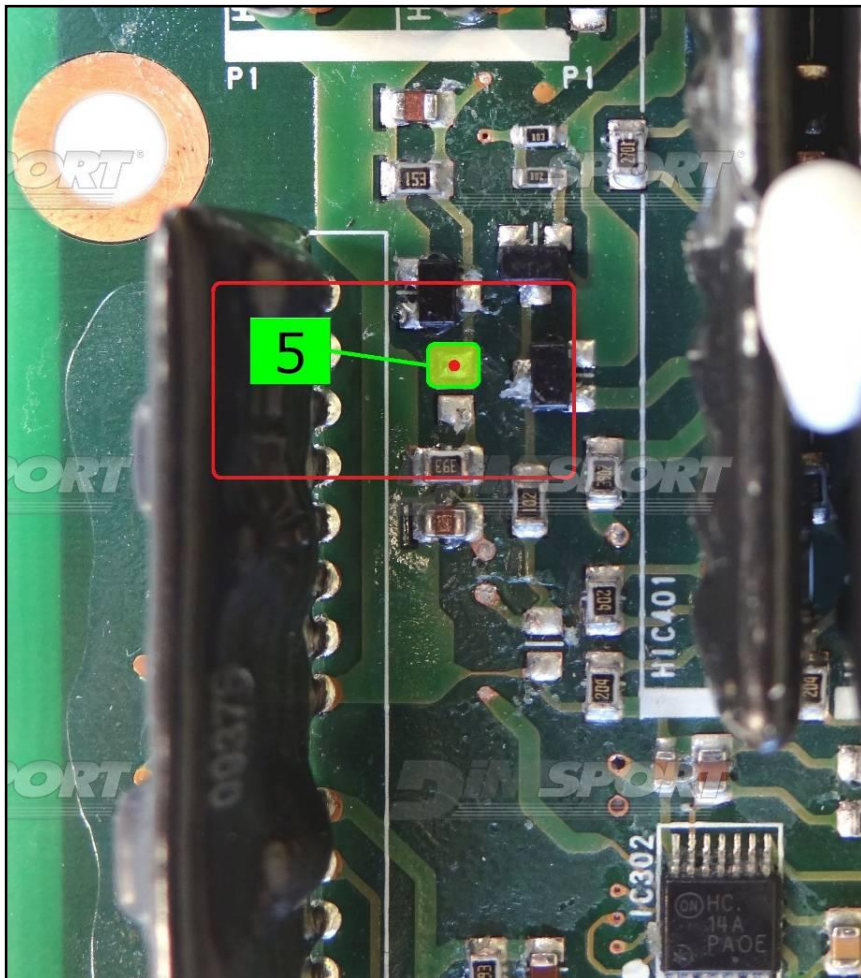


## TRANSTRON SH7058 6HK1 6UK ISUZU

ZONE 1 : desolder and lift the pin of the component shown here below in the picture. Solder it back before placing the ECU back into the vehicle.



ZONE 2 : connect the wire 5 (green)





TRANSTRON SH7058 6HK1 6UK ISUZU

ZONE 3 : connect the wires 6 (Blue), 7 (violet) and 8 (grey)

