

TRANSTRON SH7058 ISUZU

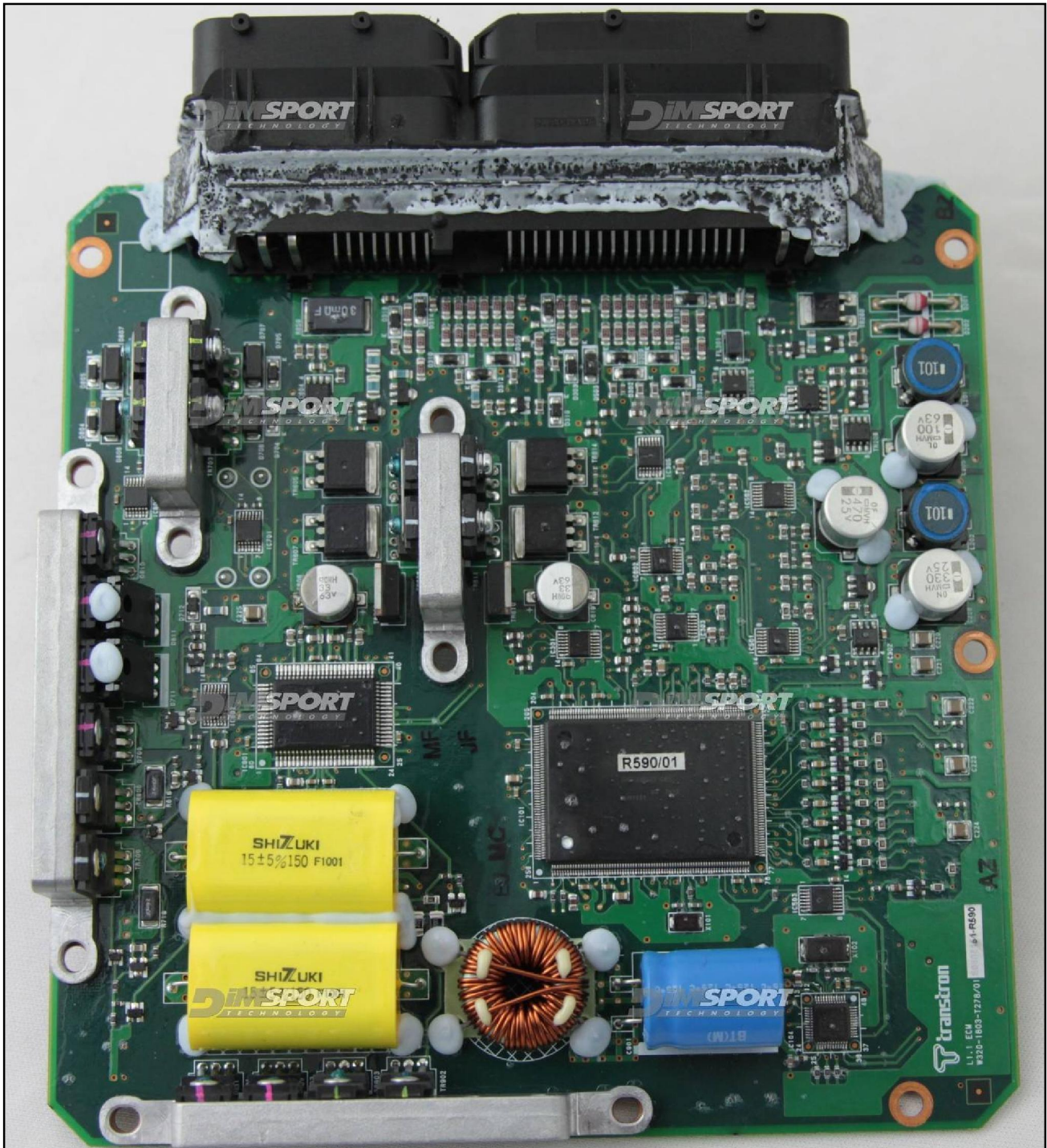
plugin **430**

WARNING: this ECU type can have 3 different motherboards, after the ECU opening please check if your one is TYPE 01, TYPE 02, TYPE 03



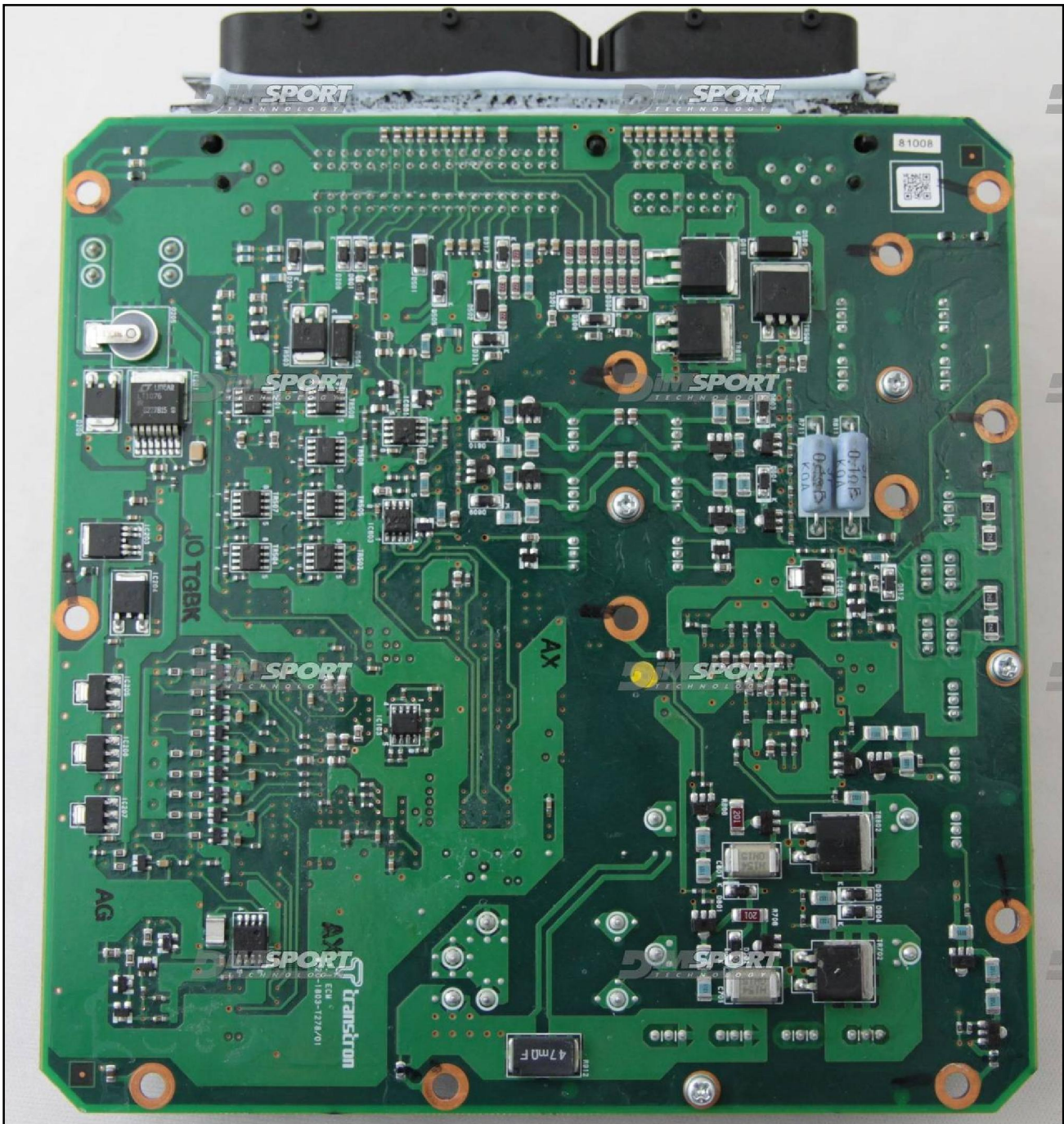
TRANSTRON SH7058 ISUZU

ECU TYPE 01 motherboard side for reading



TRANSTRON SH7058 ISUZU

ECU TYPE 01 motherboard side for writing

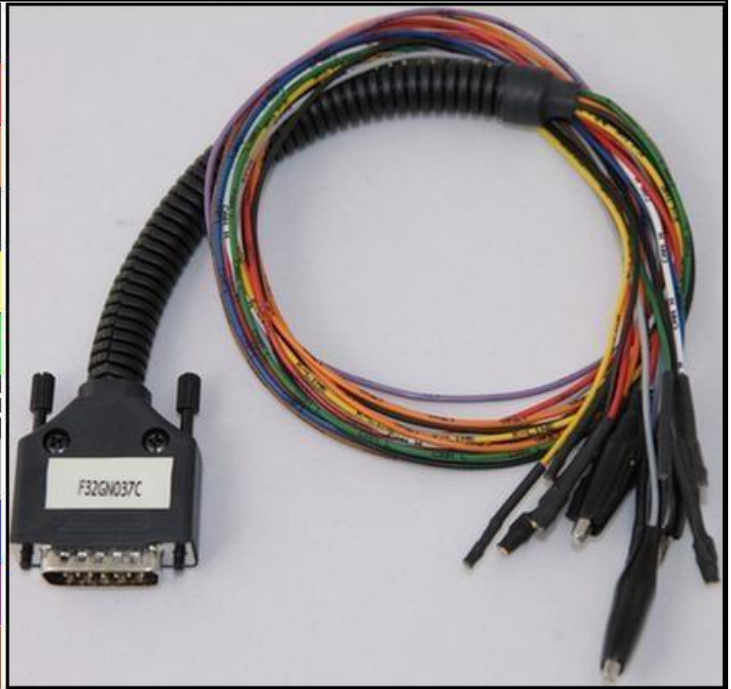


TRANSTRON SH7058 ISUZU

DIRECT CONNECTION

In order to connect to the ECU use the CABLE F32GN037C.
Make sure that the POWER led (red) on Trasdata is ON.

COLORE FILO WIRE COLOUR		DESCRIZIONE DESCRIPTION
ROSSO RED		POSITIVO DIRETTO POWER BATTERY
ARANCIO ORANGE		POSITIVO SOTTO QUADRO POWER SWITCH ON
NERO BLACK		MASSA GND
GIALLO YELLOW		KLINE
VERDE GREEN		CAN LOW
BIANCO WHITE		CAN HIGH
GRIGIO GREY		POL4 BOOT
BLU BLUE		POL5 CNF1
VIOLA/GRIGIO PURPLE/GREY		TENSIONE PROG. PROG. VOLTAGE
MARRONE BROWN		RESET



ECU CONNECTOR TYPE 01



WARNING :

on this ECU you must use two different flat cables: one is for the READING procedure and one is for the WRITING procedure.

TRANSTRON SH7058 ISUZU

ECU TYPE 01 DIRECT CONNECTION – ECU READING:

For the READING procedure use the FLAT cable F34NTF53

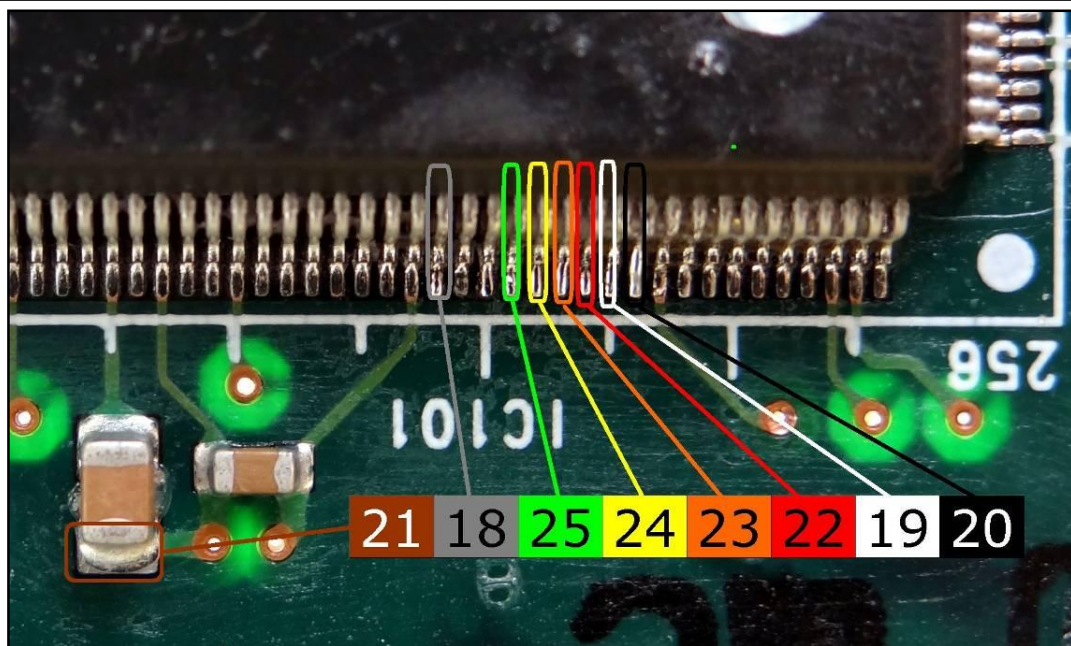
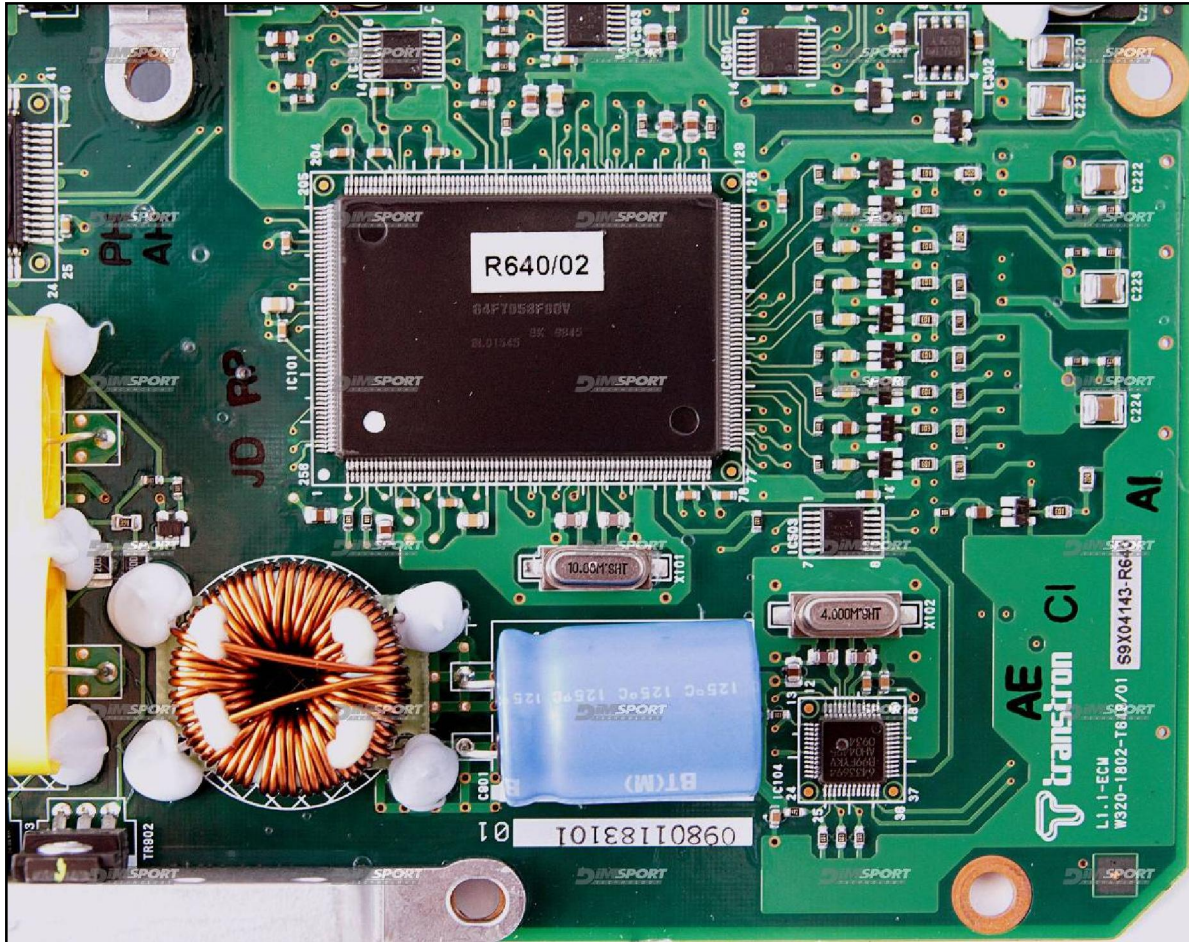


Pin	Colore Colour
11	Non usato Not used
12	Non usato Not used
13	Non usato Not used
14	Non usato Not used
15	Non usato Not used
16	Non usato Not used
17	Non usato Not used
18	Grigio Grey
19	Bianco White
20	Nero Black
21	Marrone Brown
22	Rosso Red
23	Arancio Orange
24	Giallo Yellow
25	Verde Green
26	Non usato Not used



TRANSTRON SH7058 ISUZU

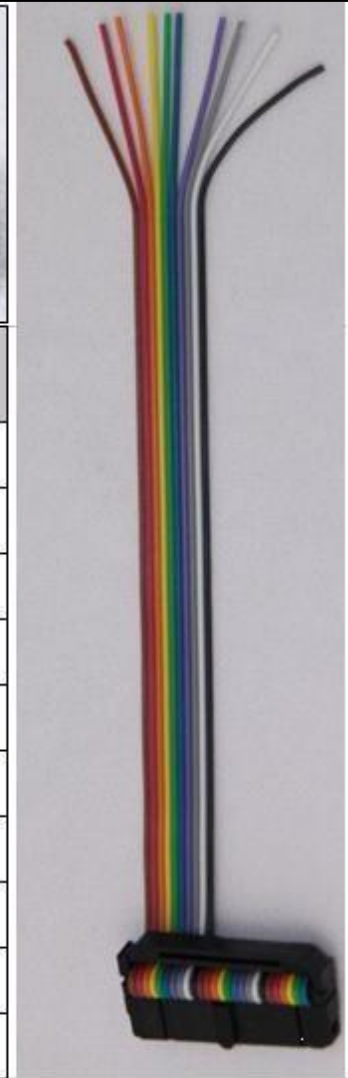
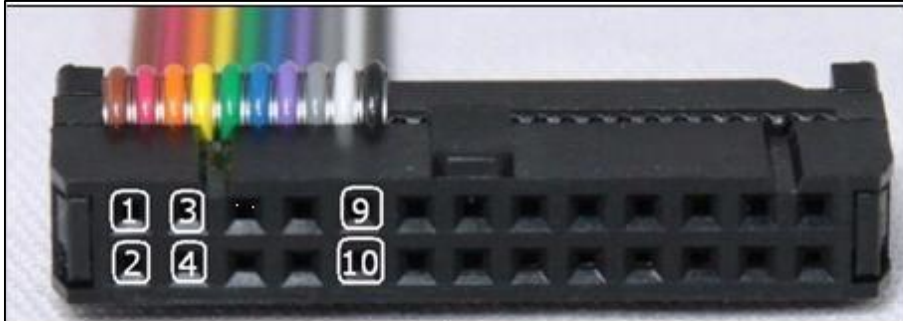
WARNING: for the reading procedure it is necessary to connect directly to the pins of the MICRO.



TRANSTRON SH7058 ISUZU

ECU TYPE 01 DIRECT CONNECTION – ECU WRITING:

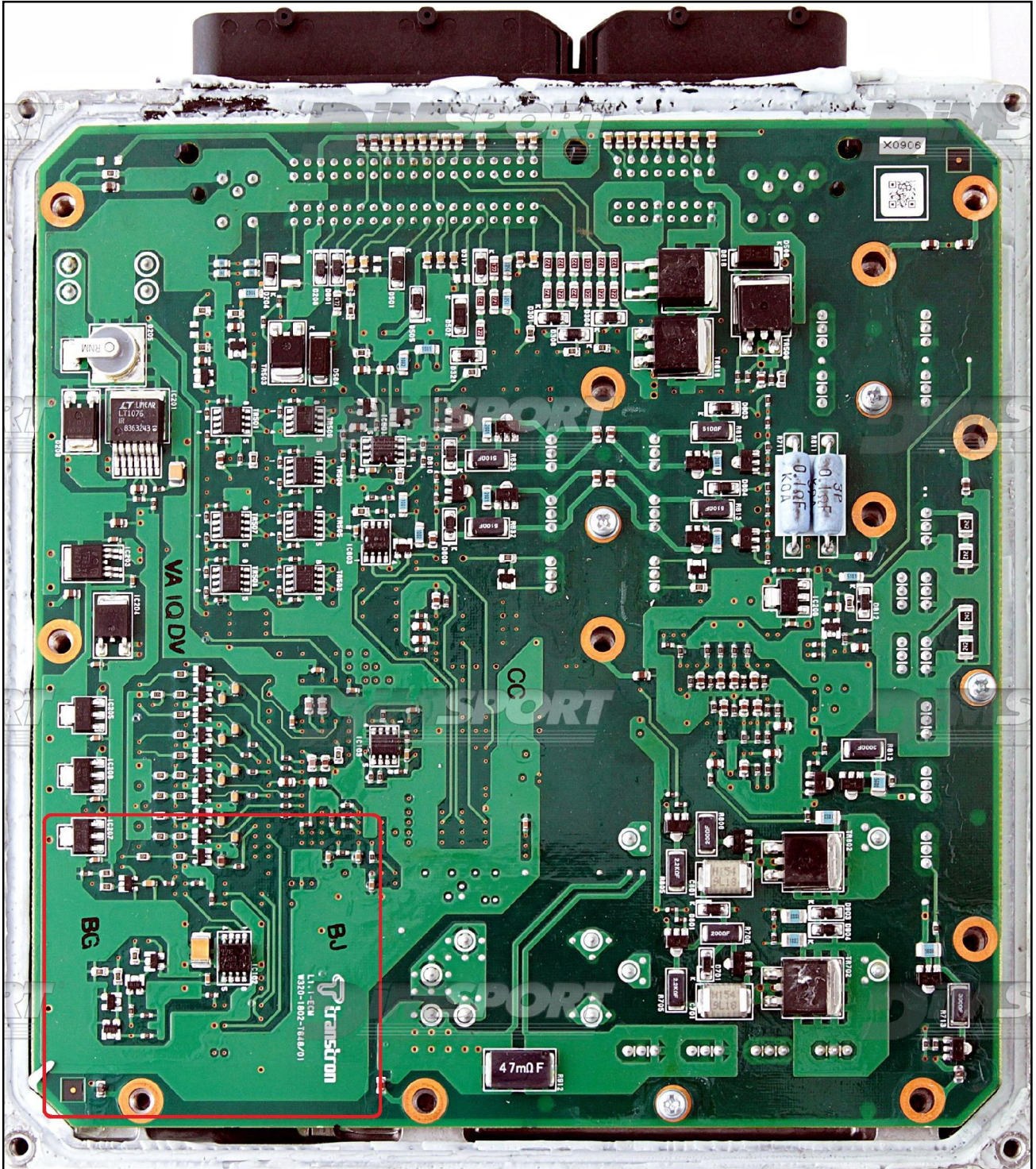
For the WRITING procedure use the FLAT cable F34NTF51



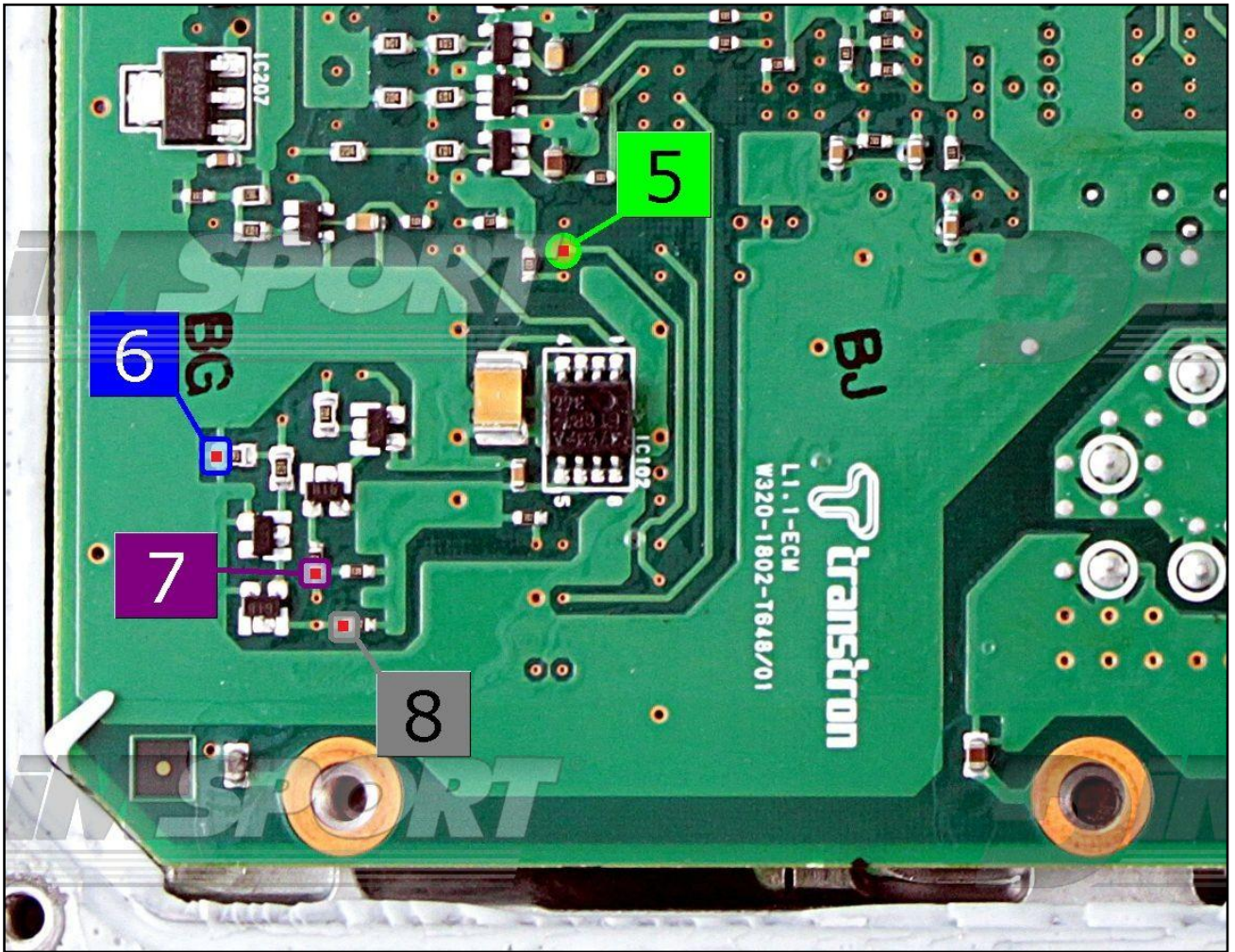
Pin	Colore Colour
1	Non usato Not used
2	Non usato Not used
3	Non usato Not used
4	Non usato Not used
5	Verde Green
6	Blu Blue
7	Viola Violet
8	Grigio Grey
9	Non usato Not used
10	Non usato Not used

TRANSTRON SH7058 ISUZU

The soldering pin zone is the red square.

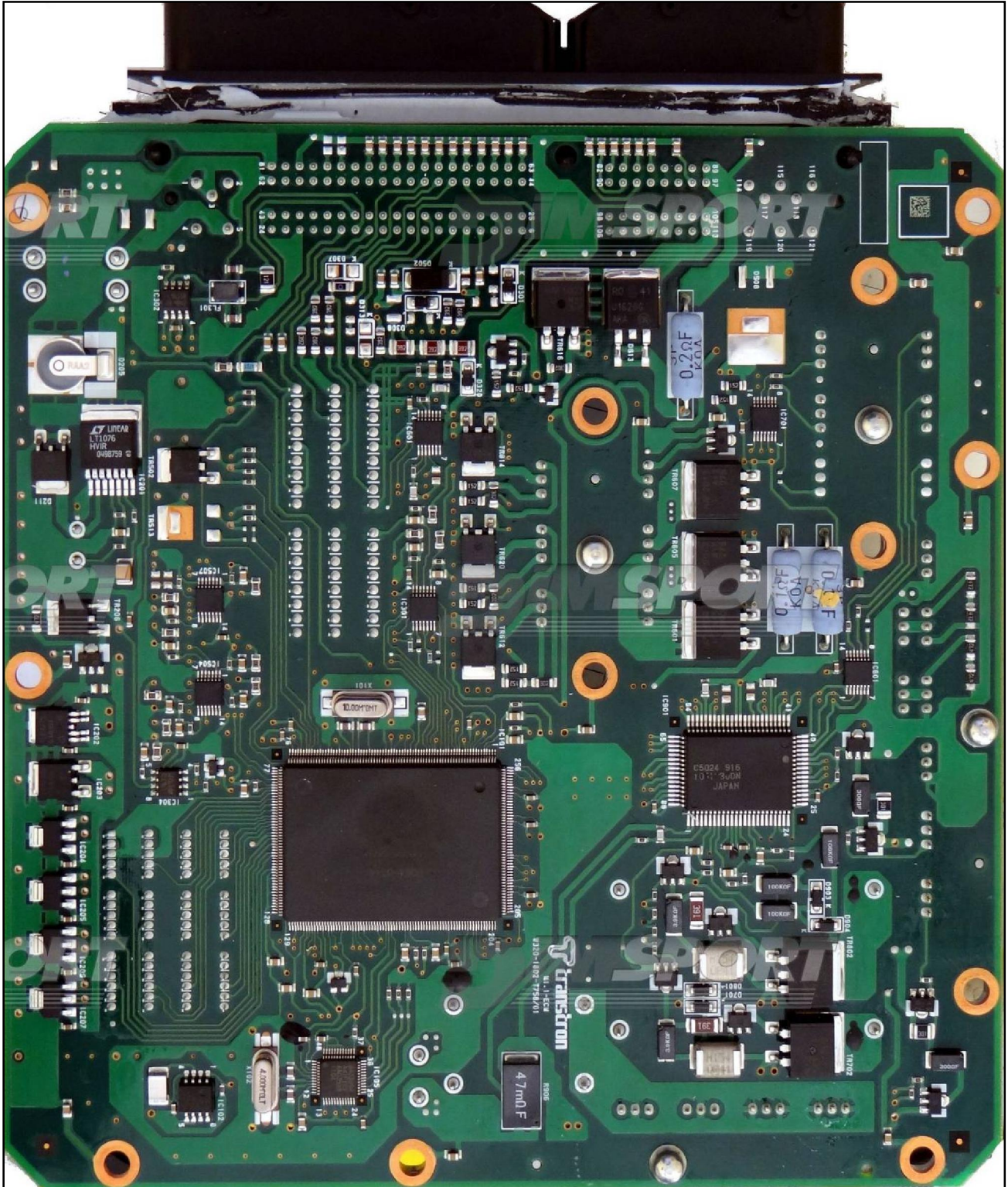


TRANSTRON SH7058 ISUZU



TRANSTRON SH7058 ISUZU

ECU TYPE 02 motherboard side for reading and writing

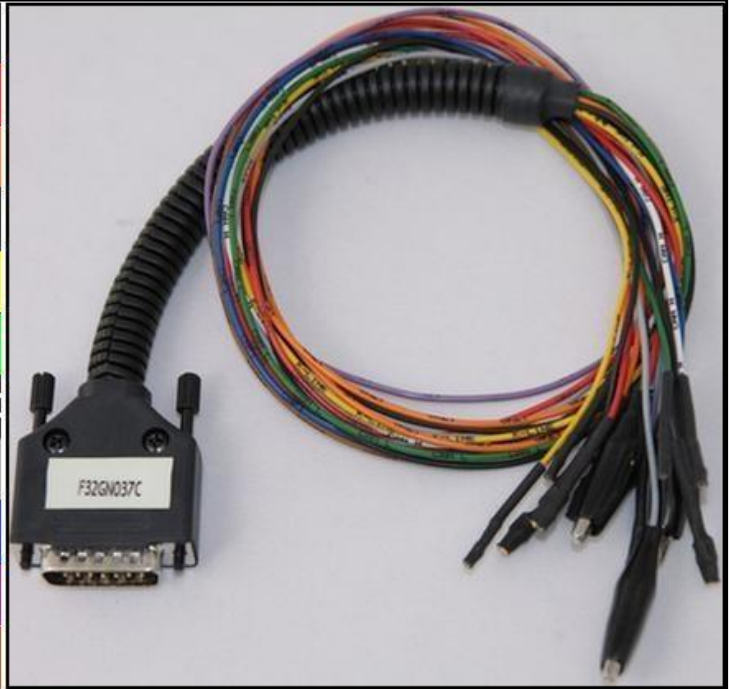


TRANSTRON SH7058 ISUZU

DIRECT CONNECTION

In order to connect to the ECU use the CABLE F32GN037C.
Make sure that the POWER led (red) on Trasdata is ON.

COLORE FILO WIRE COLOUR		DESCRIZIONE DESCRIPTION
ROSSO RED		POSITIVO DIRETTO POWER BATTERY
ARANCIO ORANGE		POSITIVO SOTTO QUADRO POWER SWITCH ON
NERO BLACK		MASSA GND
GIALLO YELLOW		KLINE
VERDE GREEN		CAN LOW
BIANCO WHITE		CAN HIGH
GRIGIO GREY		POL4 BOOT
BLU BLUE		POL5 CNF1
VIOLA/GRIGIO PURPLE/GREY		TENSIONE PROG. PROG. VOLTAGE
MARRONE BROWN		RESET



ECU CONNECTOR TYPE 02



WARNING :

on this ECU you must use two different flat cables: one is for the READING procedure and one is for the WRITING procedure.

TRANSTRON SH7058 ISUZU

ECU TYPE 02 DIRECT CONNECTION – ECU READING:

For the READING procedure use the FLAT cable F34NTF53

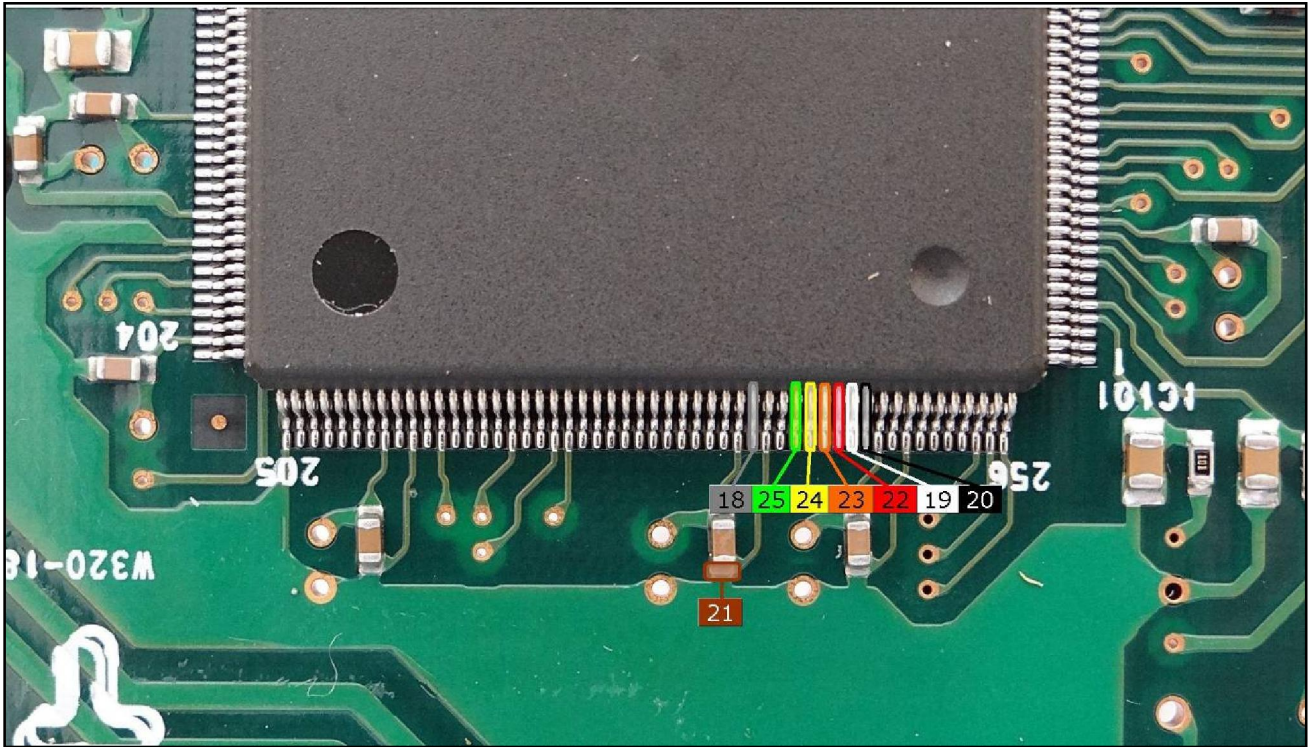


Pin	Colore Colour
11	Non usato Not used
12	Non usato Not used
13	Non usato Not used
14	Non usato Not used
15	Non usato Not used
16	Non usato Not used
17	Non usato Not used
18	Grigio Grey
19	Bianco White
20	Nero Black
21	Marrone Brown
22	Rosso Red
23	Arancio Orange
24	Giallo Yellow
25	Verde Green
26	Non usato Not used



TRANSTRON SH7058 ISUZU

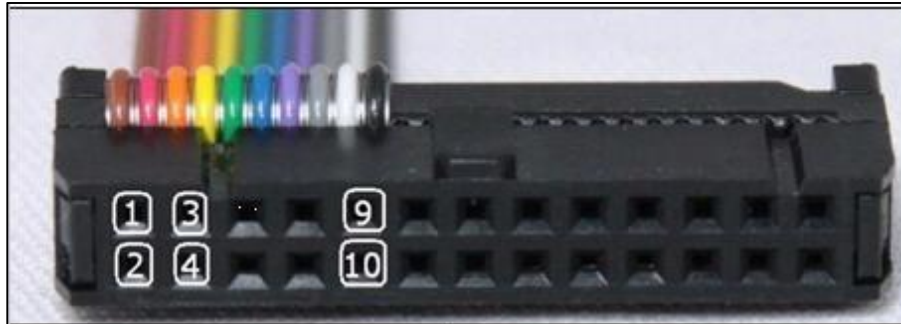
WARNING: for the reading procedure it is necessary to connect directly to the pins of the MICRO.



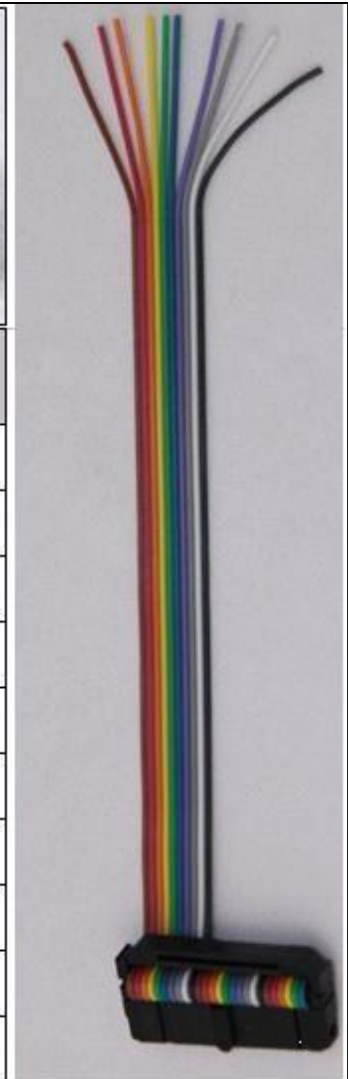
TRANSTRON SH7058 ISUZU

ECU TYPE 02 DIRECT CONNECTION – ECU WRITING:

For the WRITING procedure use the FLAT cable F34NTF51

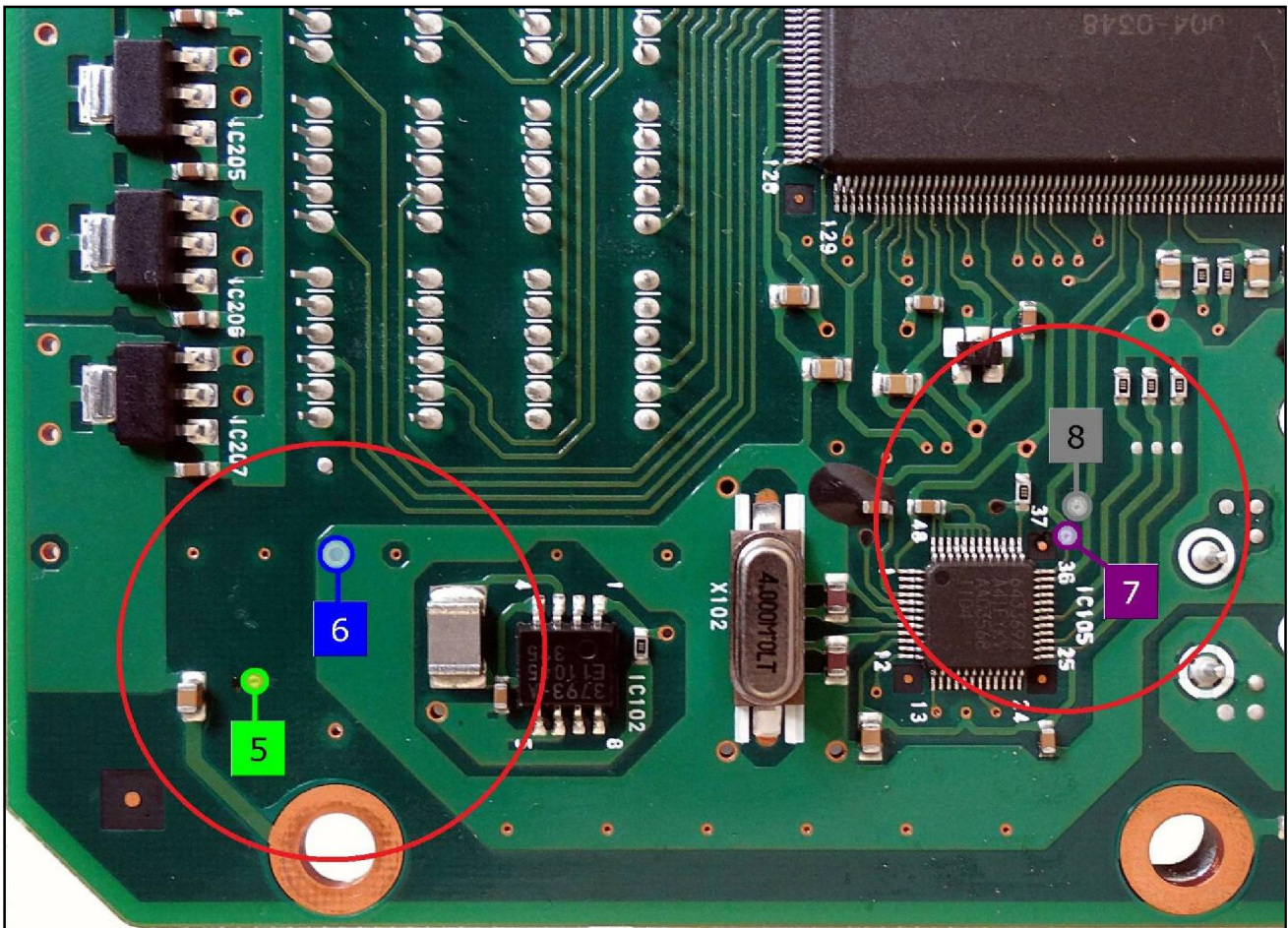
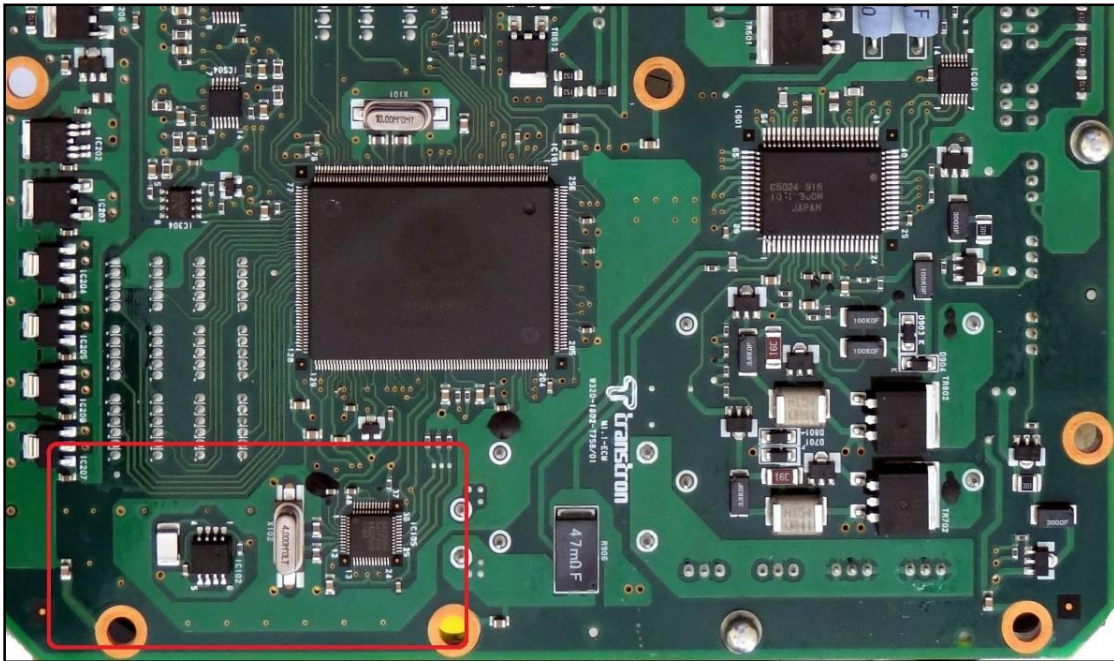


Pin	Colore Colour
1	Non usato Not used
2	Non usato Not used
3	Non usato Not used
4	Non usato Not used
5	Verde Green
6	Blu Blue
7	Viola Violet
8	Grigio Grey
9	Non usato Not used
10	Non usato Not used



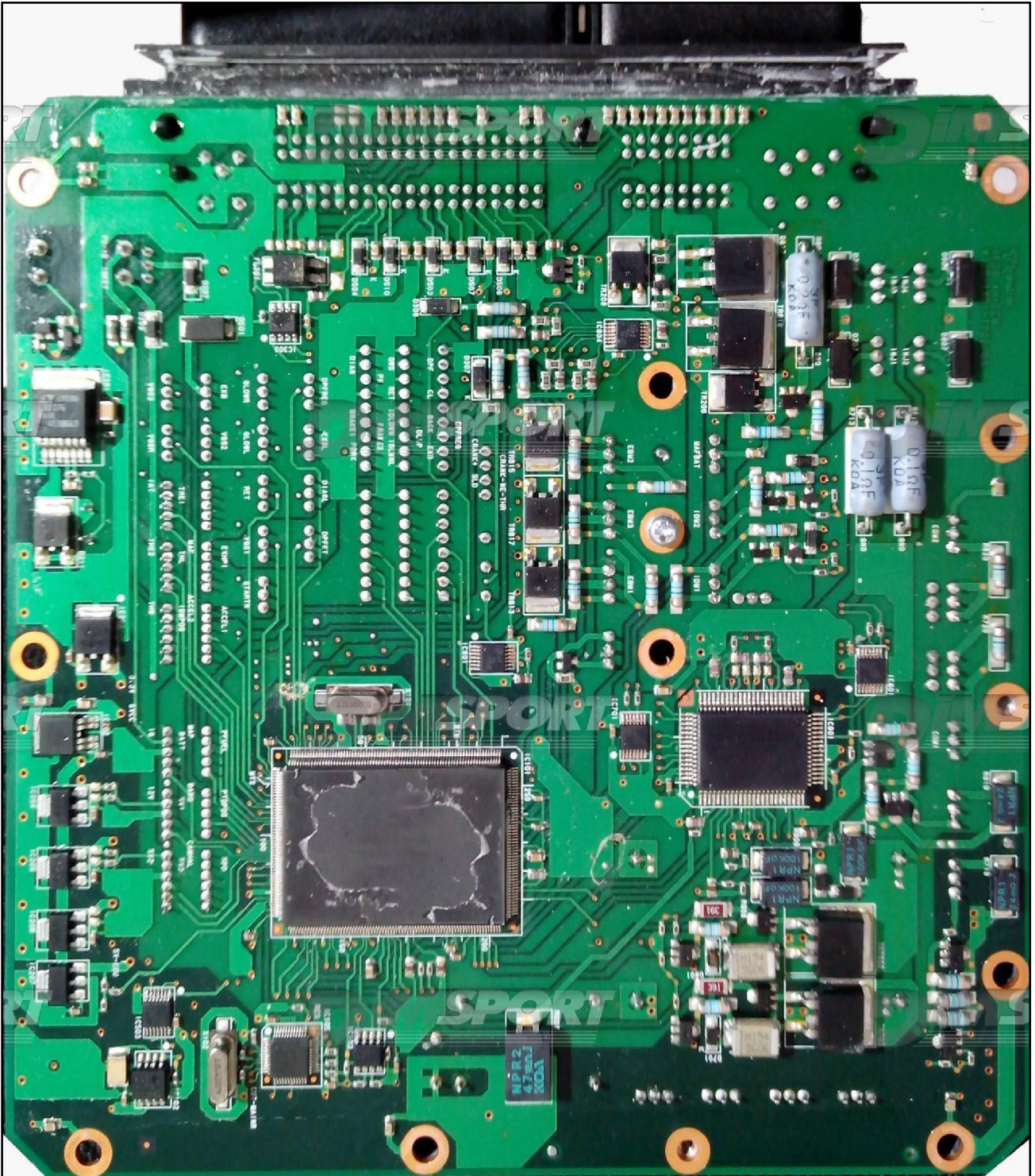
TRANSTRON SH7058 ISUZU

The soldering pin zone is the red square.



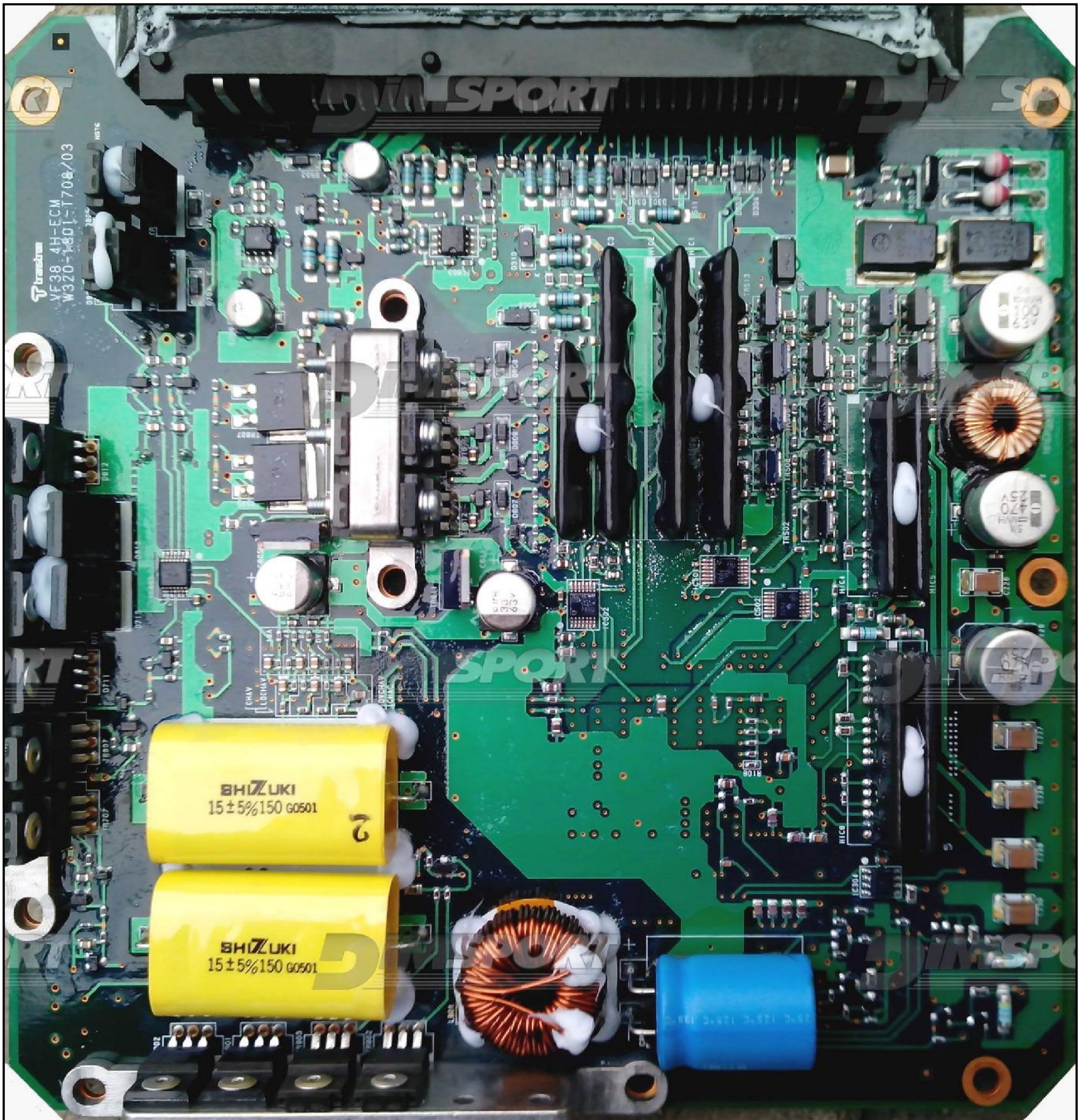
TRANSTRON SH7058 ISUZU

ECU TYPE 03 motherboard side for reading



TRANSTRON SH7058 ISUZU

ECU TYPE 03 motherboard side for writing

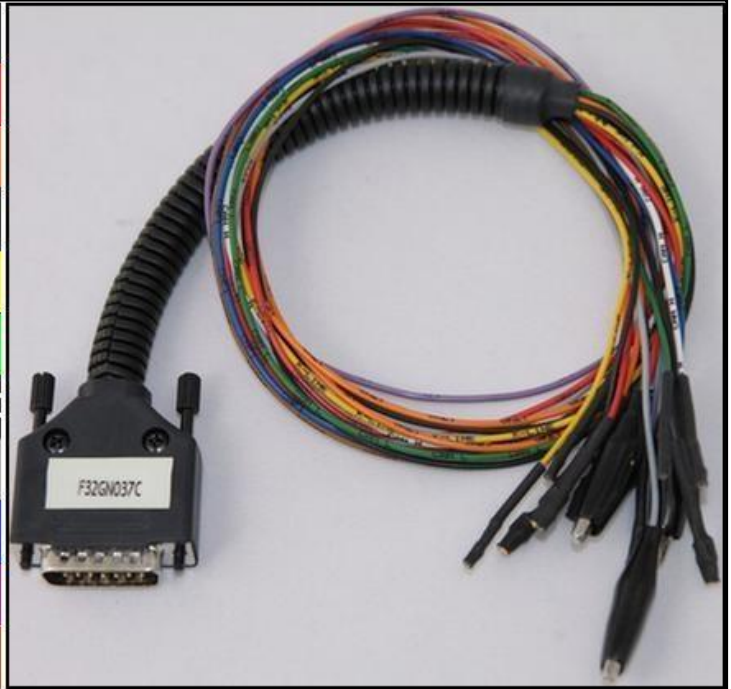


TRANSTRON SH7058 ISUZU

DIRECT CONNECTION

In order to connect to the ECU use the CABLE F32GN037C.
Make sure that the POWER led (red) on Trasdata is ON.

COLORE FILO WIRE COLOUR		DESCRIZIONE DESCRIPTION
ROSSO RED		POSITIVO DIRETTO POWER BATTERY
ARANCIO ORANGE		POSITIVO SOTTO QUADRO POWER SWITCH ON
NERO BLACK		MASSA GND
GIALLO YELLOW		KLINE
VERDE GREEN		CAN LOW
BIANCO WHITE		CAN HIGH
GRIGIO GREY		POL4 BOOT
BLU BLUE		POL5 CNF1
VIOLA/GRIGIO PURPLE/GREY		TENSIONE PROG. PROG. VOLTAGE
MARRONE BROWN		RESET



ECU CONNECTOR TYPE 03



WARNING :

on this ECU you must use two different flat cables: one is for the READING procedure and one is for the WRITING procedure.

TRANSTRON SH7058 ISUZU

ECU TYPE 03 DIRECT CONNECTION – ECU READING:

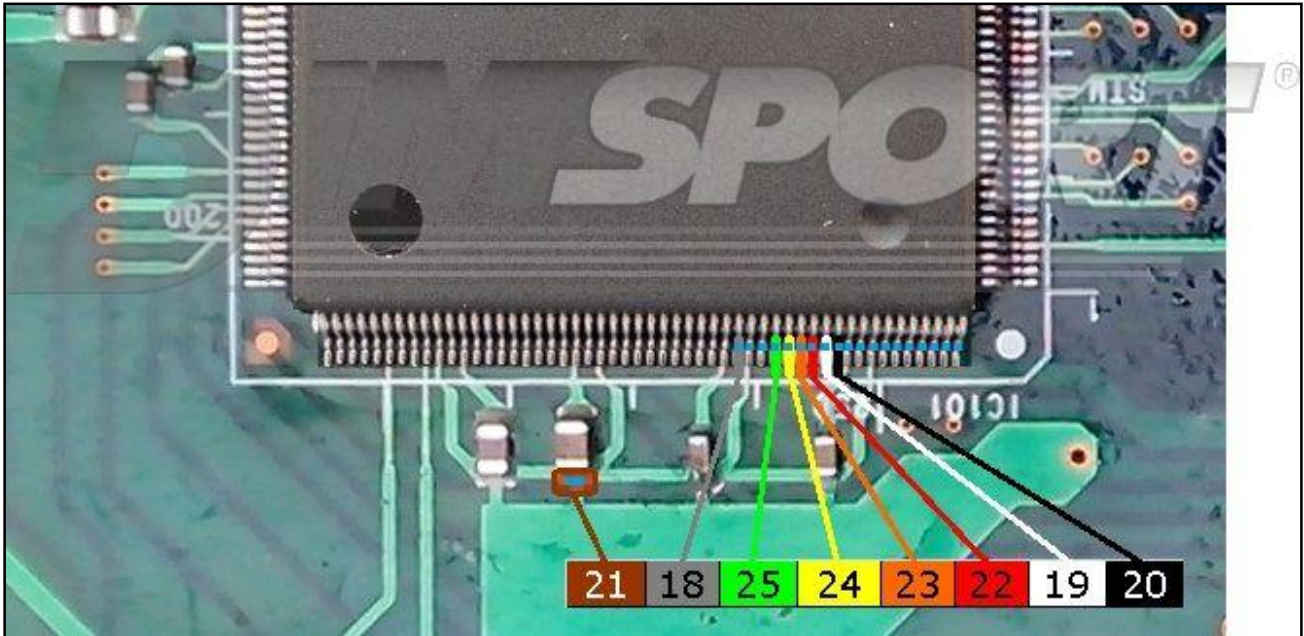
For the READING procedure use the FLAT cable F34NTF53

Pin	Colore Colour
11	Non usato Not used
12	Non usato Not used
13	Non usato Not used
14	Non usato Not used
15	Non usato Not used
16	Non usato Not used
17	Non usato Not used
18	Grigio Grey
19	Bianco White
20	Nero Black
21	Marrone Brown
22	Rosso Red
23	Arancio Orange
24	Giallo Yellow
25	Verde Green
26	Non usato Not used



TRANSTRON SH7058 ISUZU

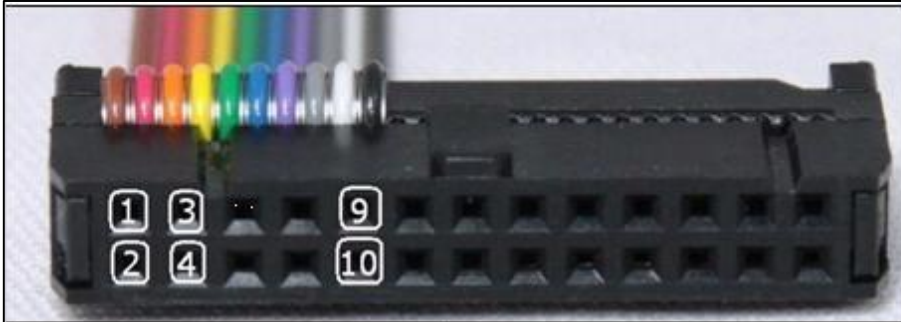
WARNING: for the reading procedure it is necessary to connect directly to the pins of the MICRO.



TRANSTRON SH7058 ISUZU

ECU TYPE 03 DIRECT CONNECTION – ECU WRITING:

For the WRITING procedure use the FLAT cable F34NTF51



Pin	Colore Colour
1	Non usato Not used
2	Non usato Not used
3	Non usato Not used
4	Non usato Not used
5	Verde Green
6	Blu Blue
7	Viola Violet
8	Grigio Grey
9	Non usato Not used
10	Non usato Not used



TRANSTRON SH7058 ISUZU

The soldering pin zone is the red square.



TRANSTRON SH7058 ISUZU

