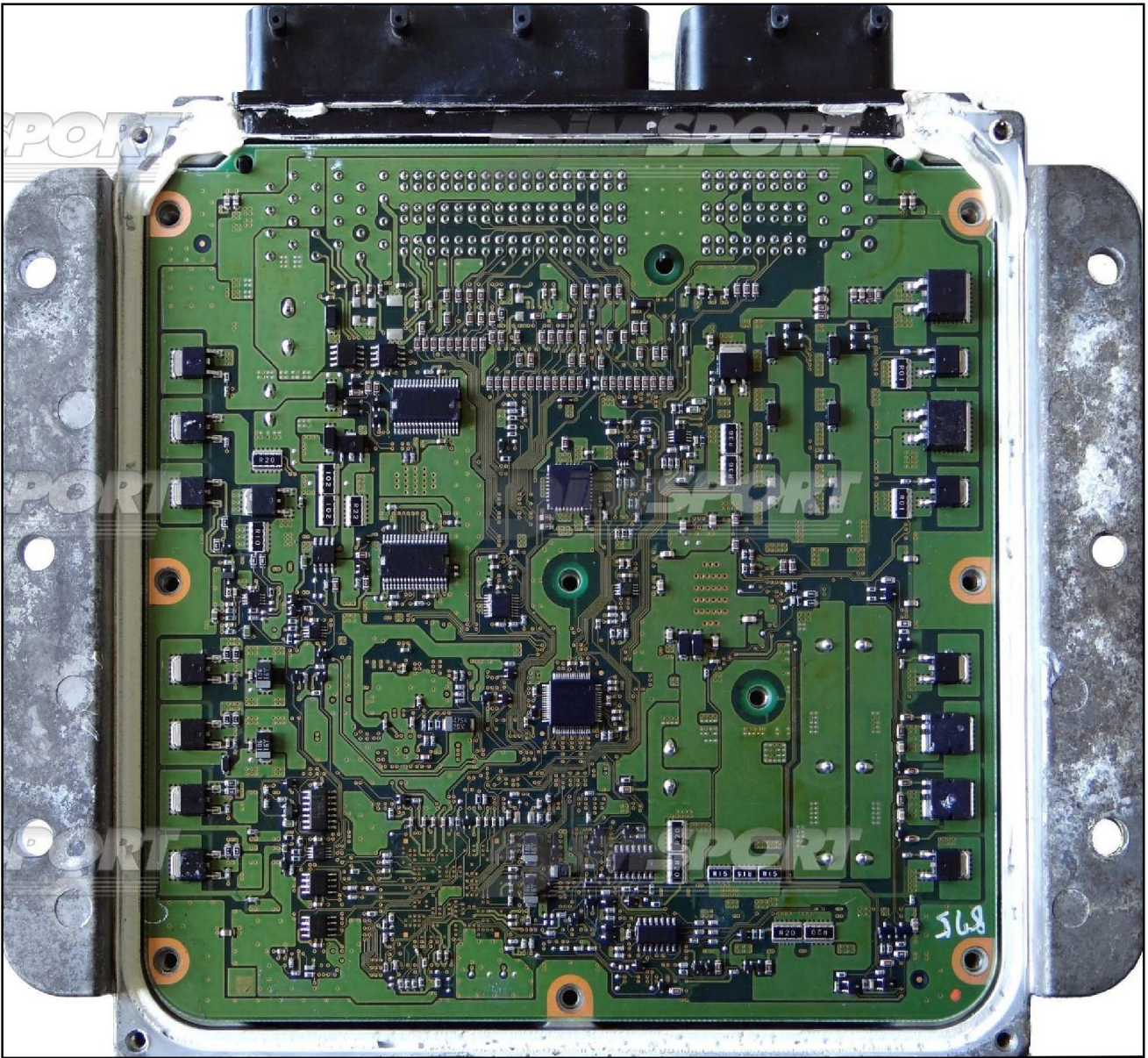


TRANSTRON SH7059 BGA ISUZU

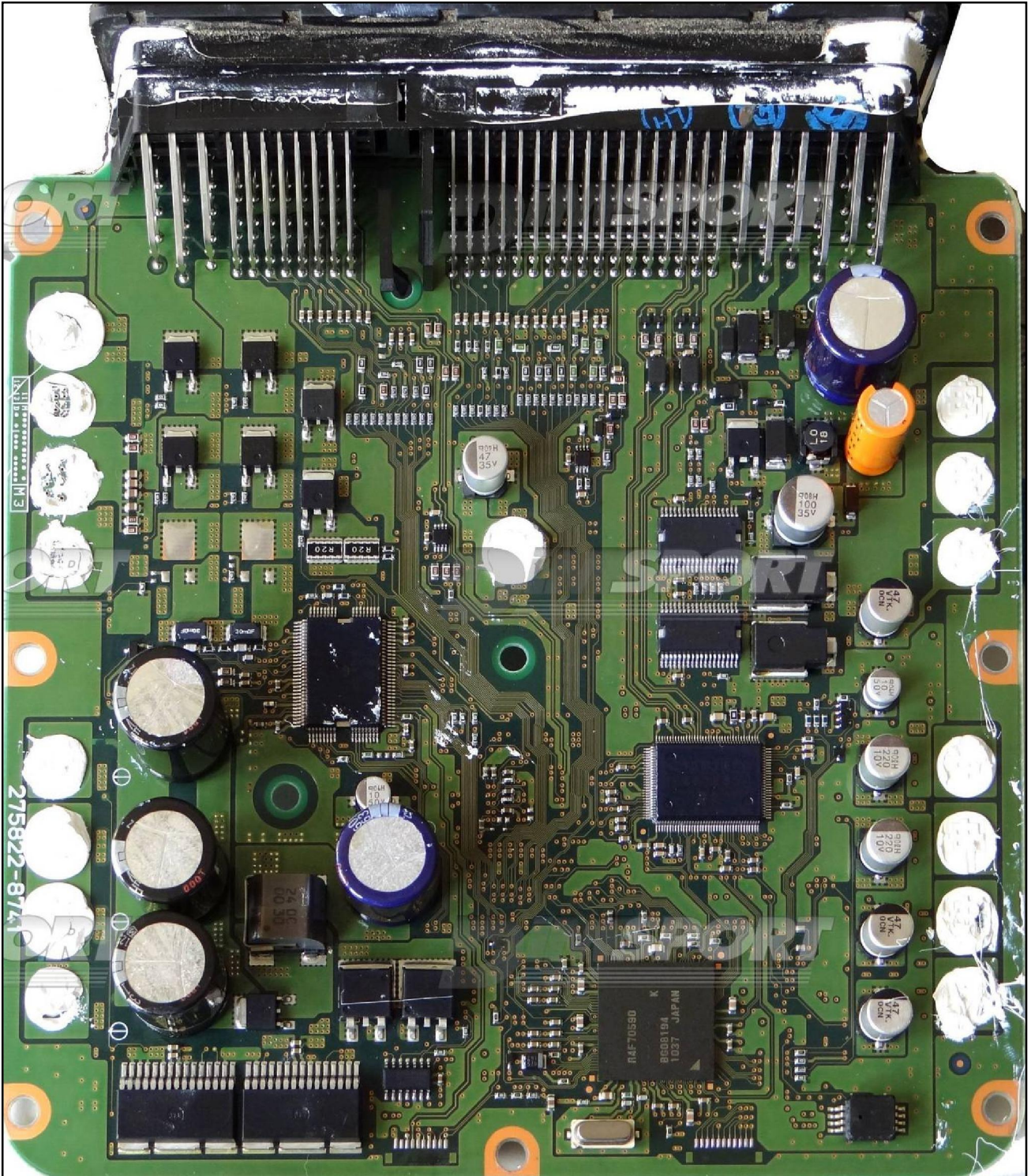
plugin 852



TRANSTRON SH7059 BGA ISUZU



TRANSTRON SH7059 BGA ISUZU

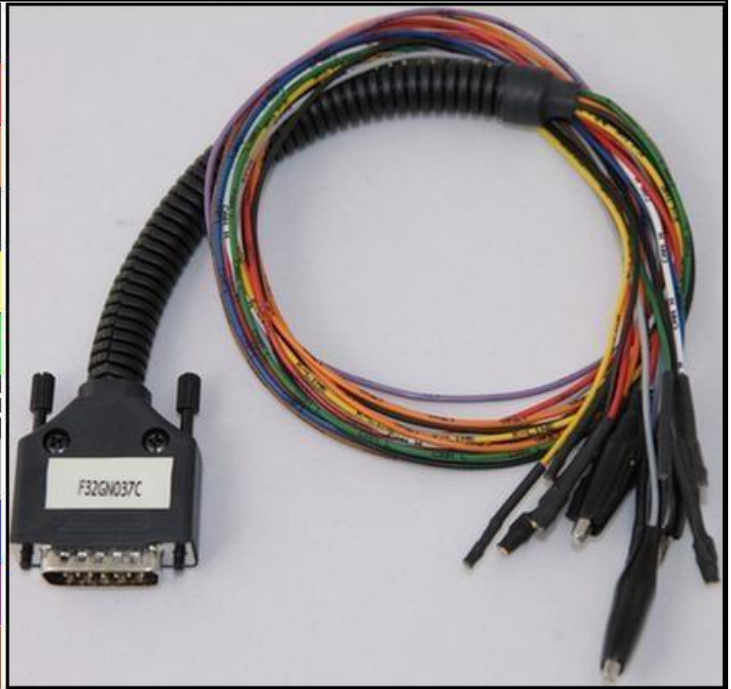


TRANSTRON SH7059 BGA ISUZU

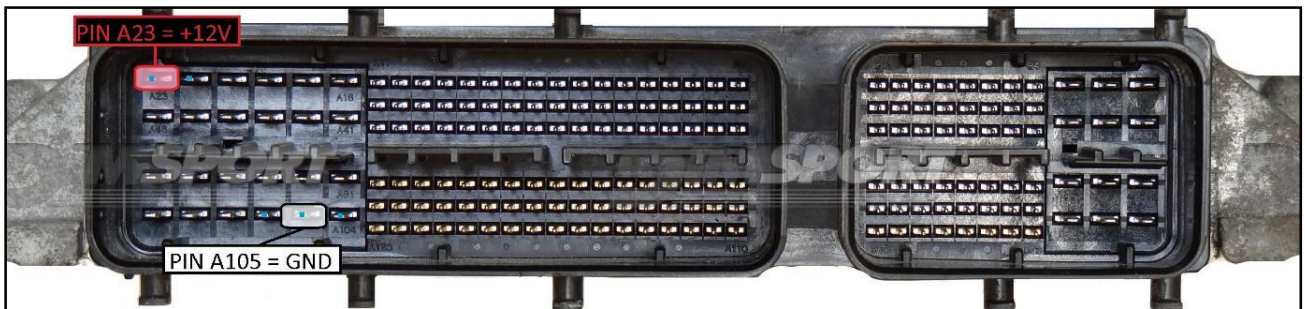
DIRECT CONNECTION

In order to connect to the ECU use the CABLE F32GN037C.
Make sure that the POWER led (red) on Trasdata is ON.

COLORE FILO WIRE COLOUR		DESCRIZIONE DESCRIPTION
ROSSO RED		POSITIVO DIRETTO POWER BATTERY
ARANCIO ORANGE		POSITIVO SOTTO QUADRO POWER SWITCH ON
NERO BLACK		MASSA GND
GIALLO YELLOW		KLINE
VERDE GREEN		CAN LOW
BIANCO WHITE		CAN HIGH
GRIGIO GREY		POL4 BOOT
BLU BLUE		POL5 CNF 1
VIOLA/GRIGIO PURPLE/GREY		TENSIONE PROG. PROG. VOLTAGE
MARRONE BROWN		RESET



ECU CONNECTOR



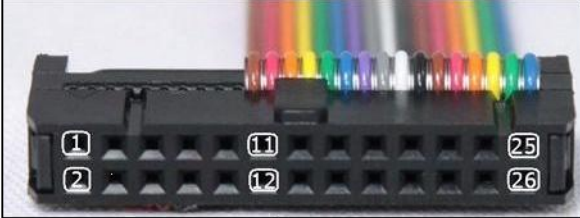
WARNING :

on this ECU you must use two different flat cables: one is for the READING procedure and one is for the WRITING procedure.


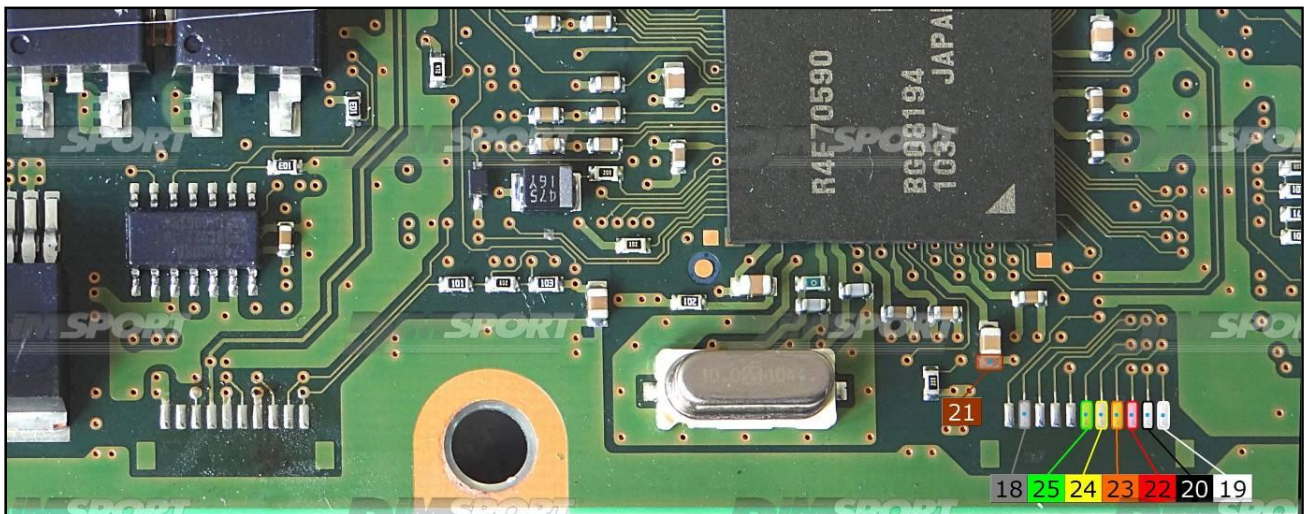
TRANSTRON SH7059 BGA ISUZU

DIRECT CONNECTION – ECU READING:

For the READING procedure use the FLAT cable F34NTF53



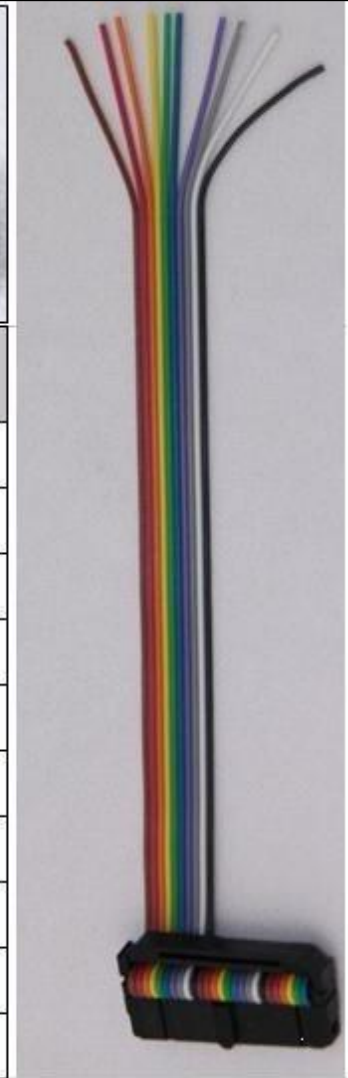
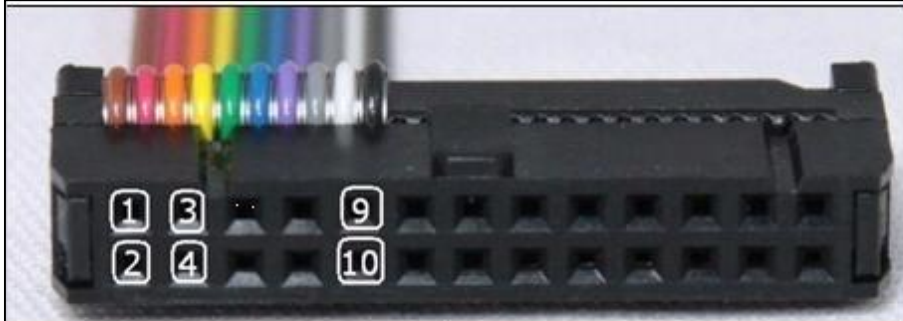
Pin	Colore Colour
11	Non usato Not used
12	Non usato Not used
13	Non usato Not used
14	Non usato Not used
15	Non usato Not used
16	Non usato Not used
17	Non usato Not used
18	Grigio Grey
19	Bianco White
20	Nero Black
21	Marrone Brown
22	Rosso Red
23	Arancio Orange
24	Giallo Yellow
25	Verde Green
26	Non usato Not used

TRANSTRON SH7059 BGA ISUZU

DIRECT CONNECTION – ECU WRITING:

For the WRITING procedure use the FLAT cable F34NTF51

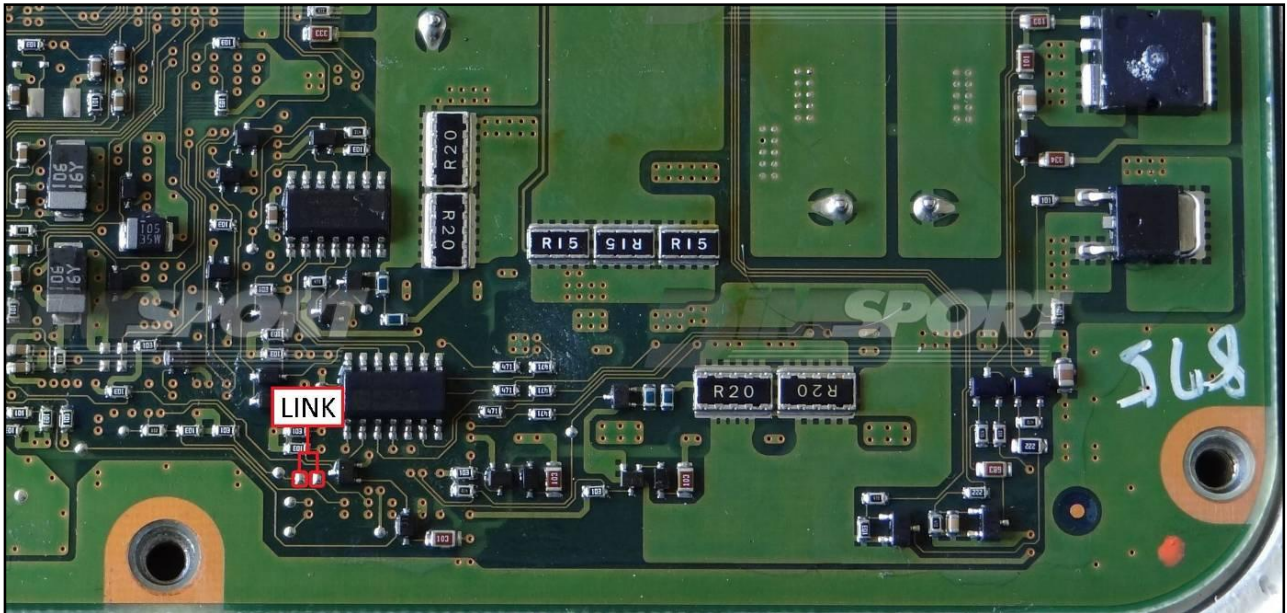


Pin	Colore Colour
1	Marrone Brown
2	Non usato Not used
3	Non usato Not used
4	Non usato Not used
5	Verde Green
6	Blu Blue
7	Viola Violet
8	Grigio Grey
9	Non usato Not used
10	Nero Black

TRANSTRON SH7059 BGA ISUZU

For the writing procedure it is necessary to perform the connections on both the ECU sides, remove the LINK after the writing operation.

Upper side:



Lower side:

