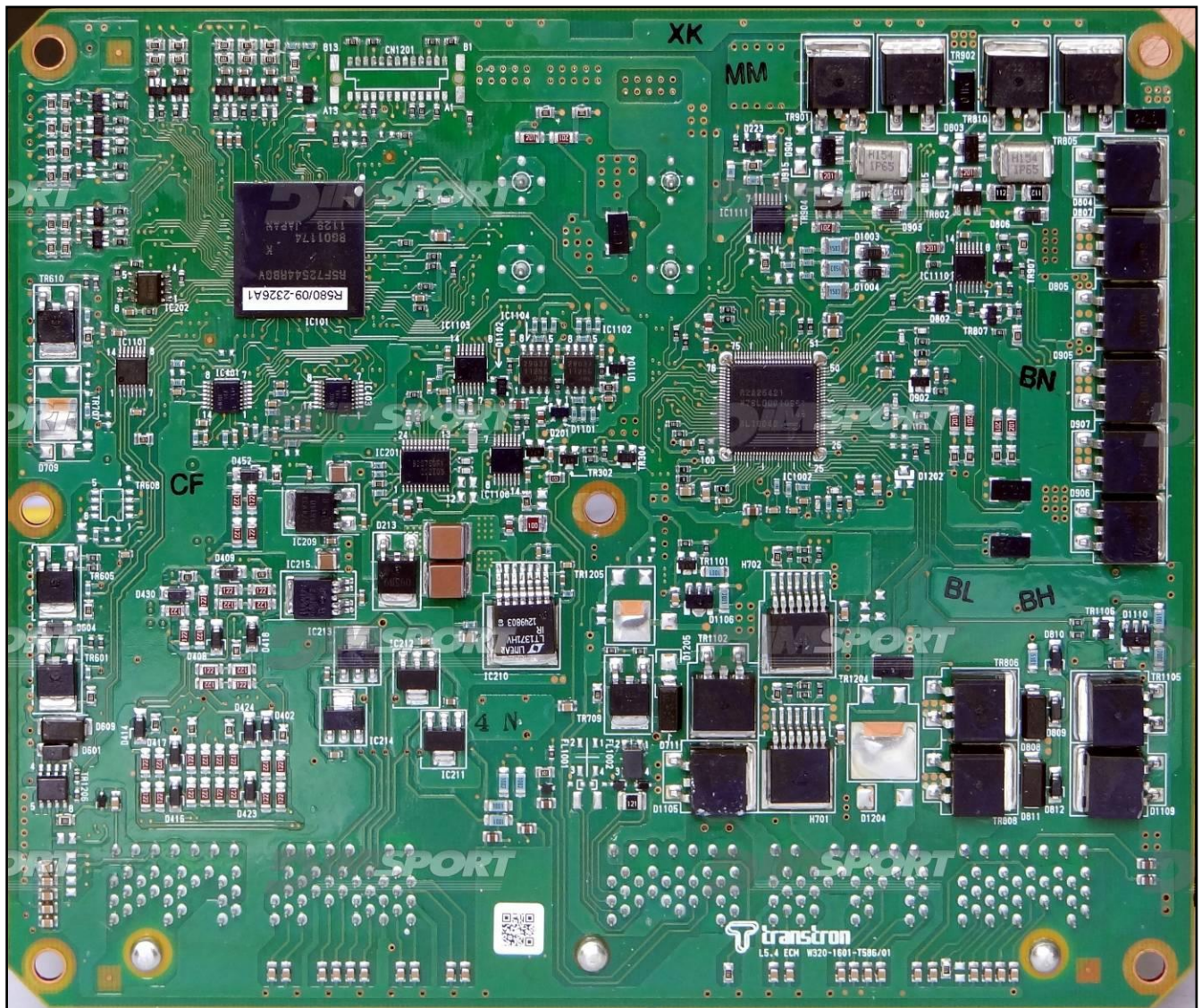


TRANSTRON SH72544R3 JTAG ISUZU

plugin 1082



TRANSTRON SH72544R3 JTAG ISUZU



TRANSTRON SH72544R3 JTAG ISUZU

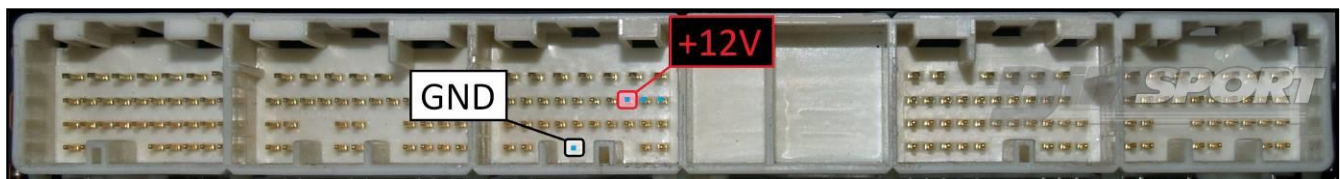
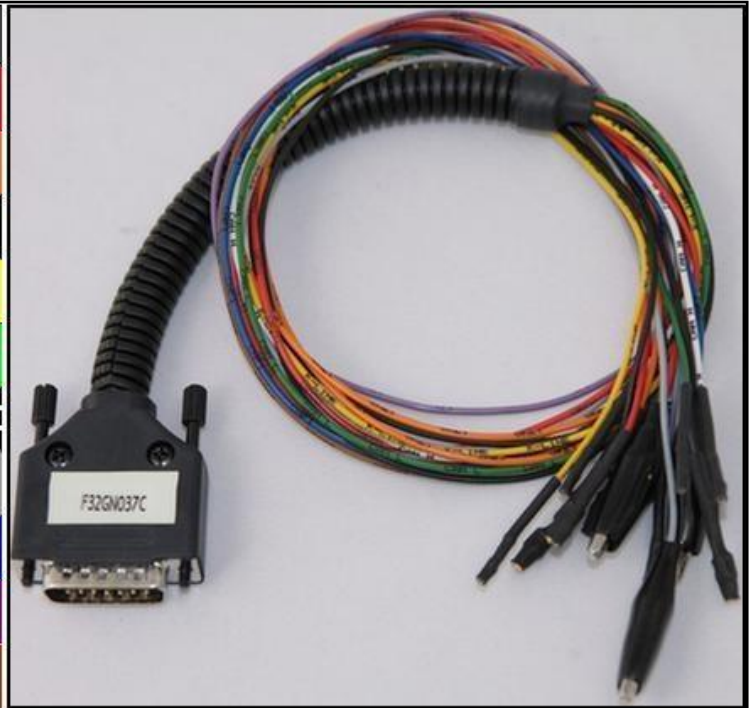
ECU CONNECTOR

In order to connect to the ECU use the cable F32GN037C/D.

Make sure that the POWER led (red) on Trasdata is ON.

These connections are required for all the connection approaches: loose wires and metal positioning frame adapter.



COLORE FILO WIRE COLOUR	DESCRIZIONE DESCRIPTION
ROSSO RED	POSITIVO DIRETTO POWER BATTERY
ARANCIO ORANGE	POSITIVO SOTTO QUADRO POWER SWITCH ON
NERO BLACK	MASSA GND
GIALLO YELLOW	KLINE
VERDE GREEN	CAN LOW
BIANCO WHITE	CAN HIGH
GRIGIO GREY	POL4 BOOT
BLU BLUE	POL5 CNF1
VIOLA/GRIGIO PURPLE/GREY	TENSIONE PROG. PROG. VOLTAGE
MARRONE BROWN	RESET



TRANSTRON SH72544R3 JTAG ISUZU

J-TAG LOOSE WIRES CONNECTION

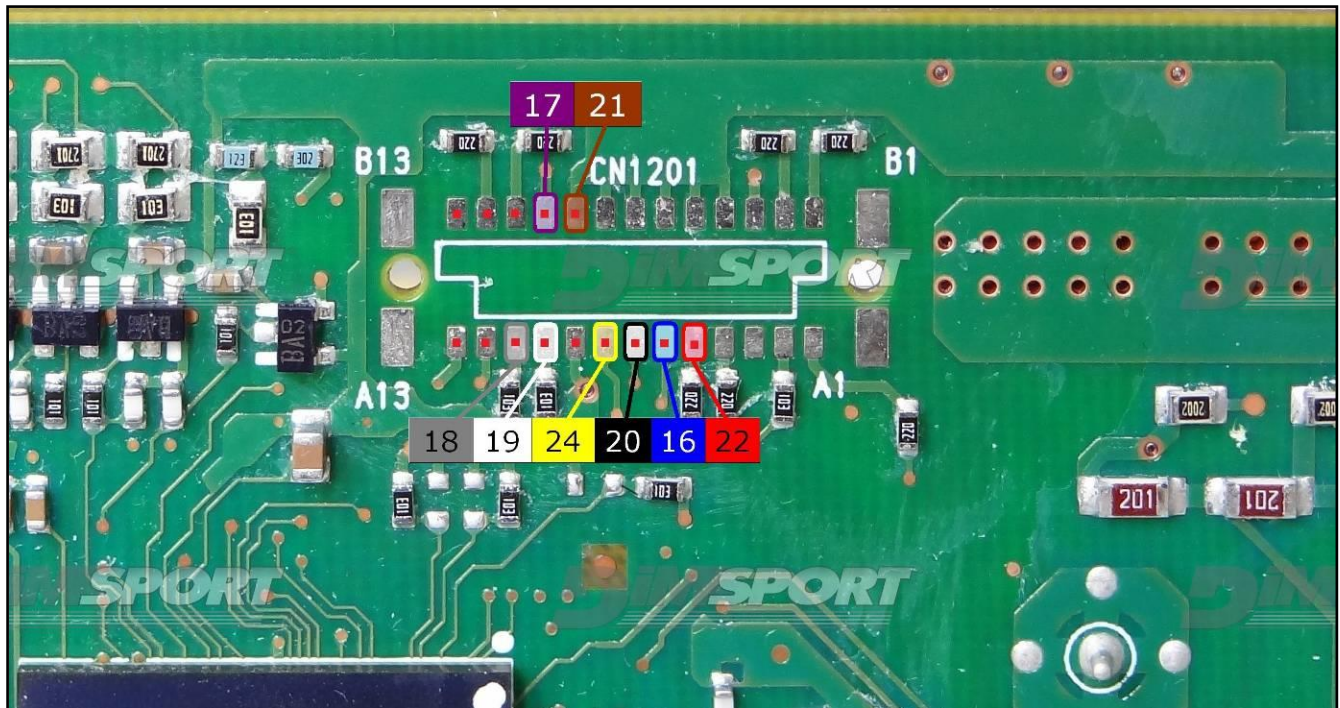
For the reading & writing procedures use the FLAT cable F34NTF53



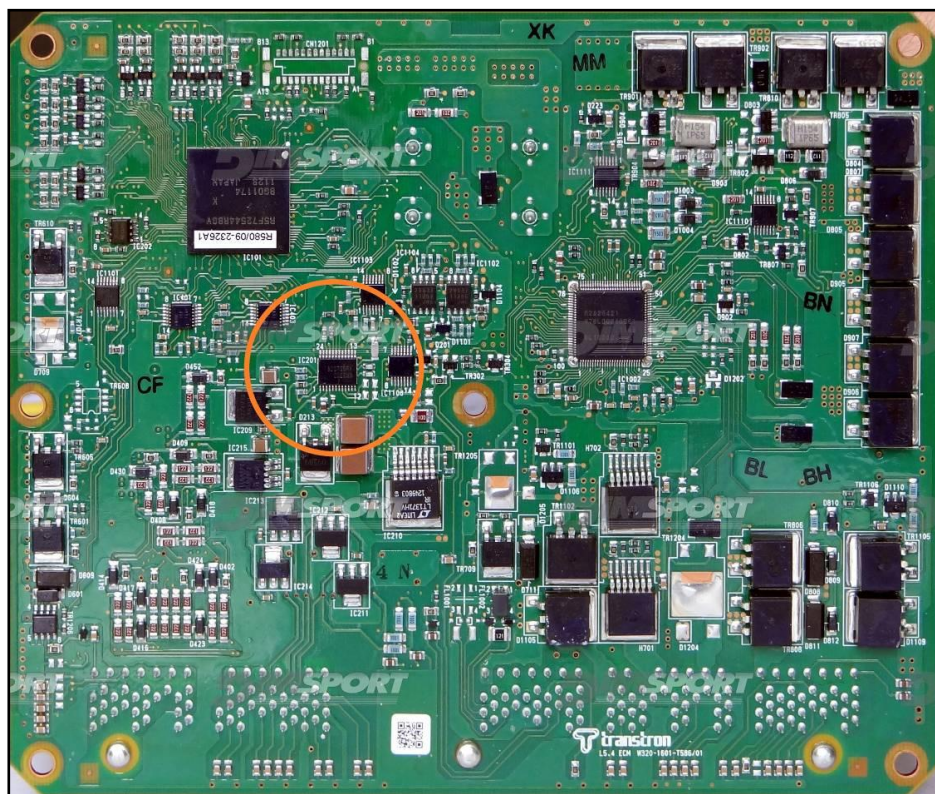
Pin	Colore Colour
11	Non usato Not used
12	Non usato Not used
13	Non usato Not used
14	Non usato Not used
15	Non usato Not used
16	Blu Blue
17	Viola Violet
18	Grigio Grey
19	Bianco White
20	Nero Black
21	Marrone Brown
22	Rosso Red
23	Arancio Orange
24	Giallo Yellow
25	Verde Green
26	Non usato Not used

TRANSTRON SH72544R3 JTAG ISUZU

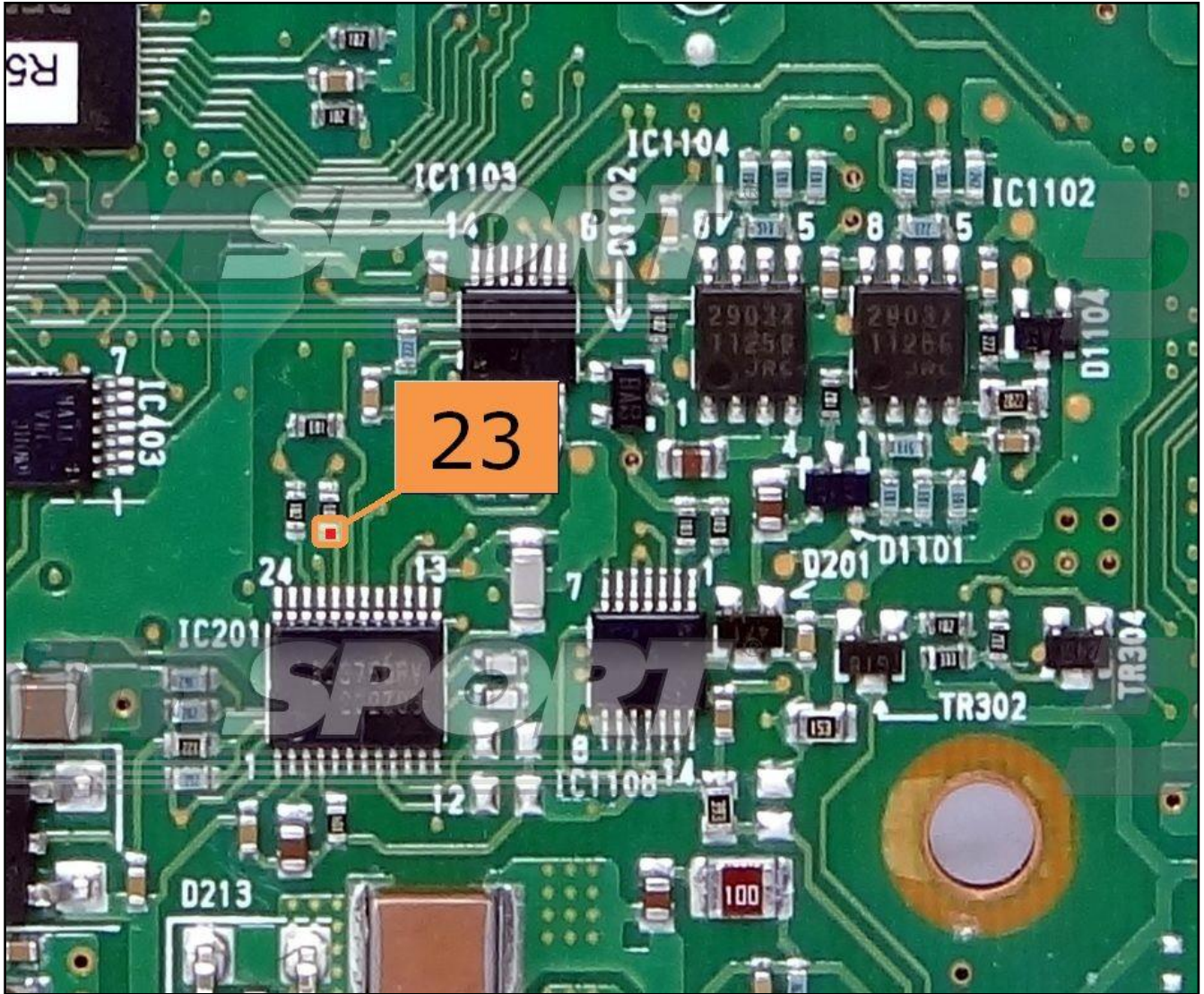
Connect the wires on the pads avoiding any short circuits.



Connect the wire 23 as describe in the following pictures.



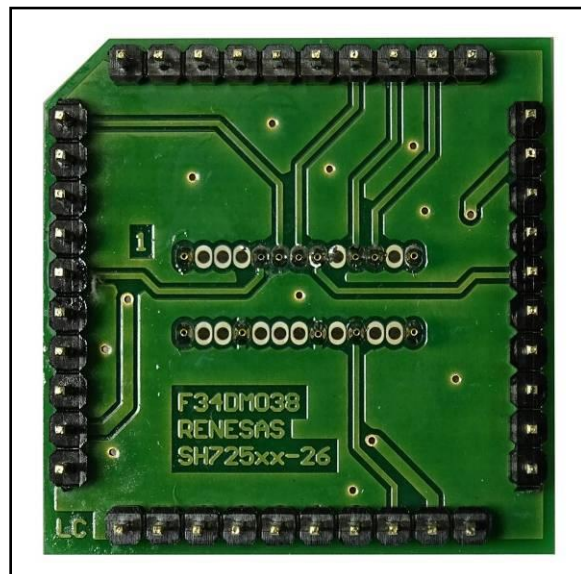
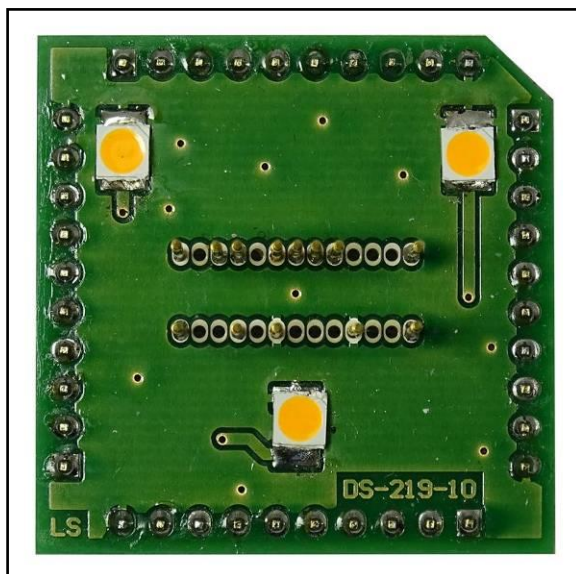
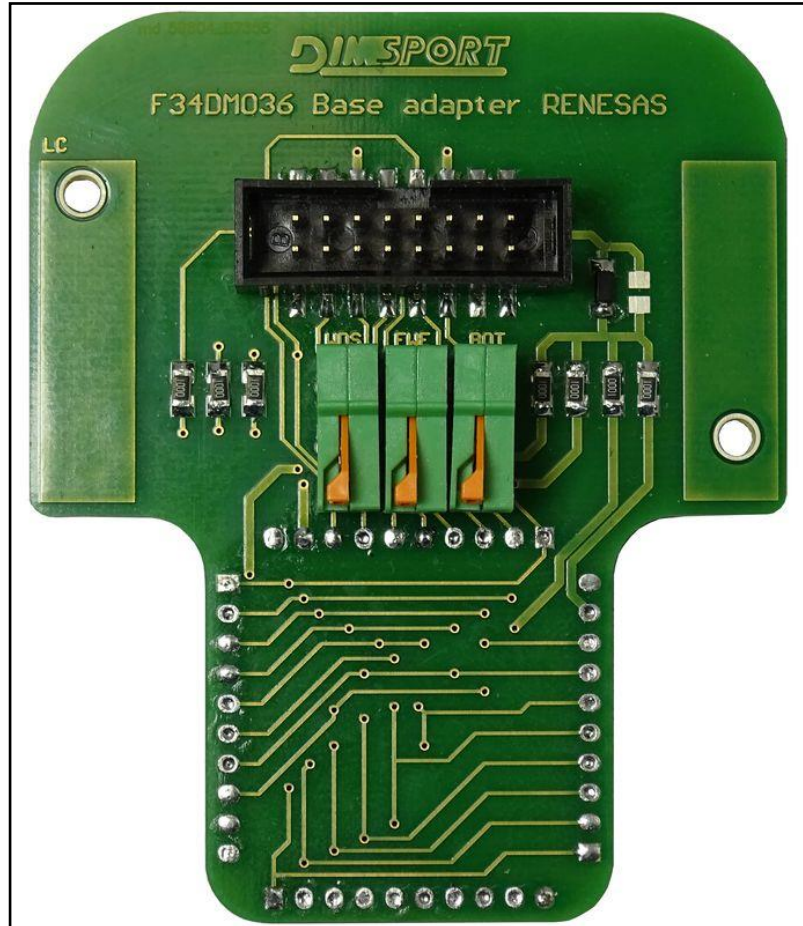
TRANSTRON SH72544R3 JTAG ISUZU



TRANSTRON SH72544R3 JTAG ISUZU

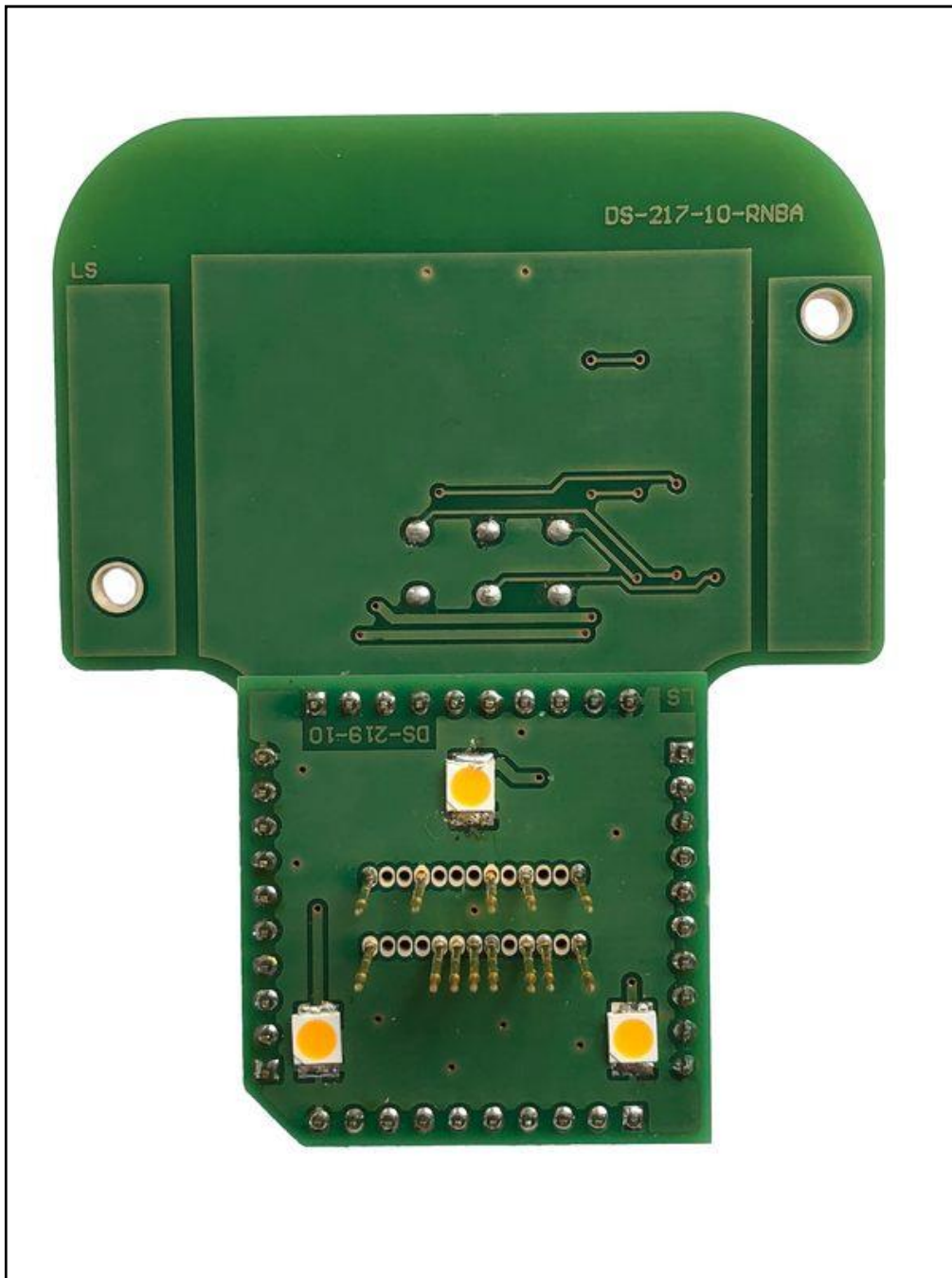
METAL POSITIONING FRAME CONNECTION

For the metal positioning frame connection are required the F34DM036 +F34DM038 adapters, JTAG pads for the communication are placed below the microprocessor.



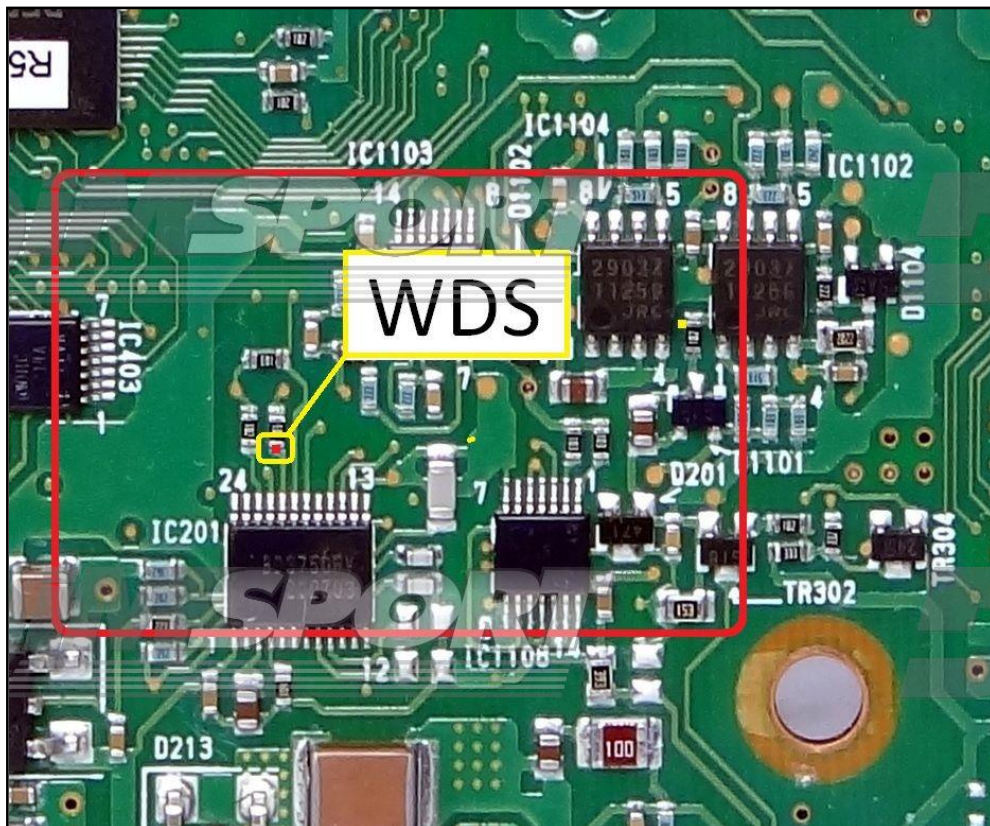
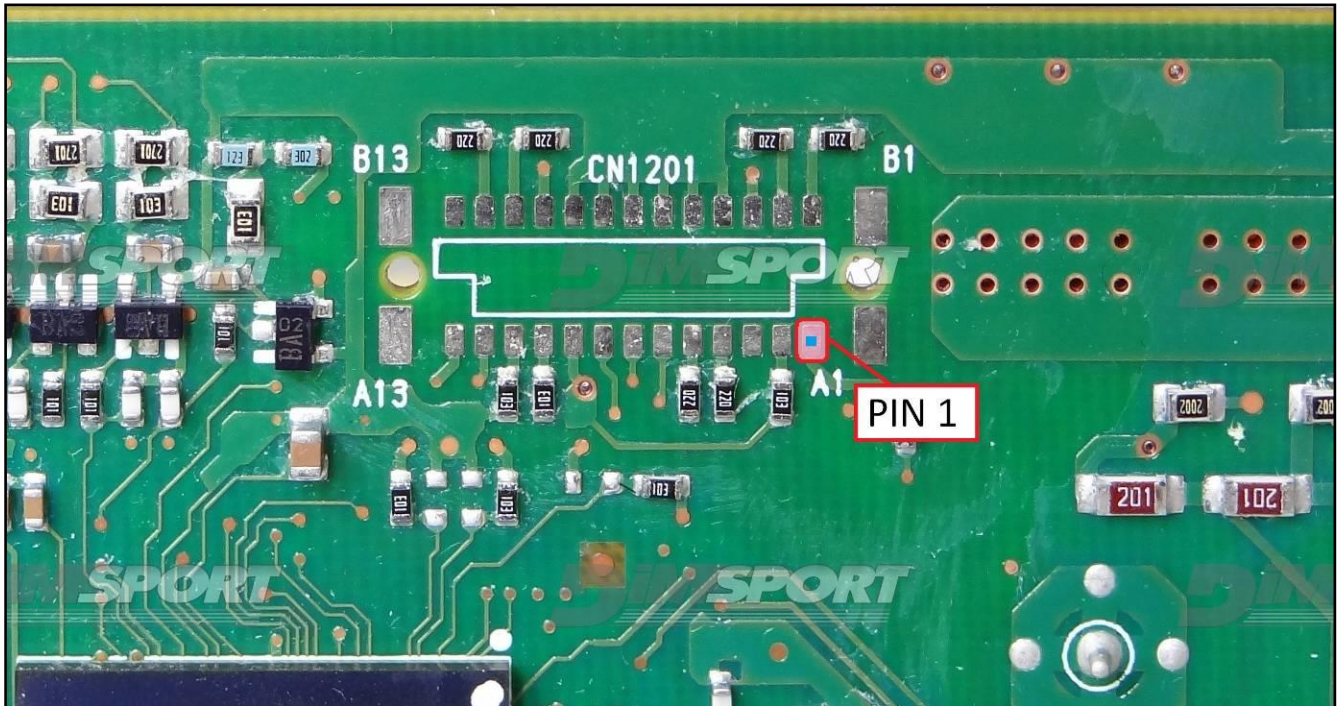
TRANSTRON SH72544R3 JTAG ISUZU

Set up the base adapter F32DM036 with the F34DM037 adapter as displayed in the following picture.



TRANSTRON SH72544R3 JTAG ISUZU

Verify the PIN 1 location and connect the pin WDS to the corresponding clamp on the base adapter F34DM036 as in displayed in the following picture.
Place F34DM036+F34DM038 adapters as displayed in the following picture.



TRANSTRON SH72544R3 JTAG ISUZU

