

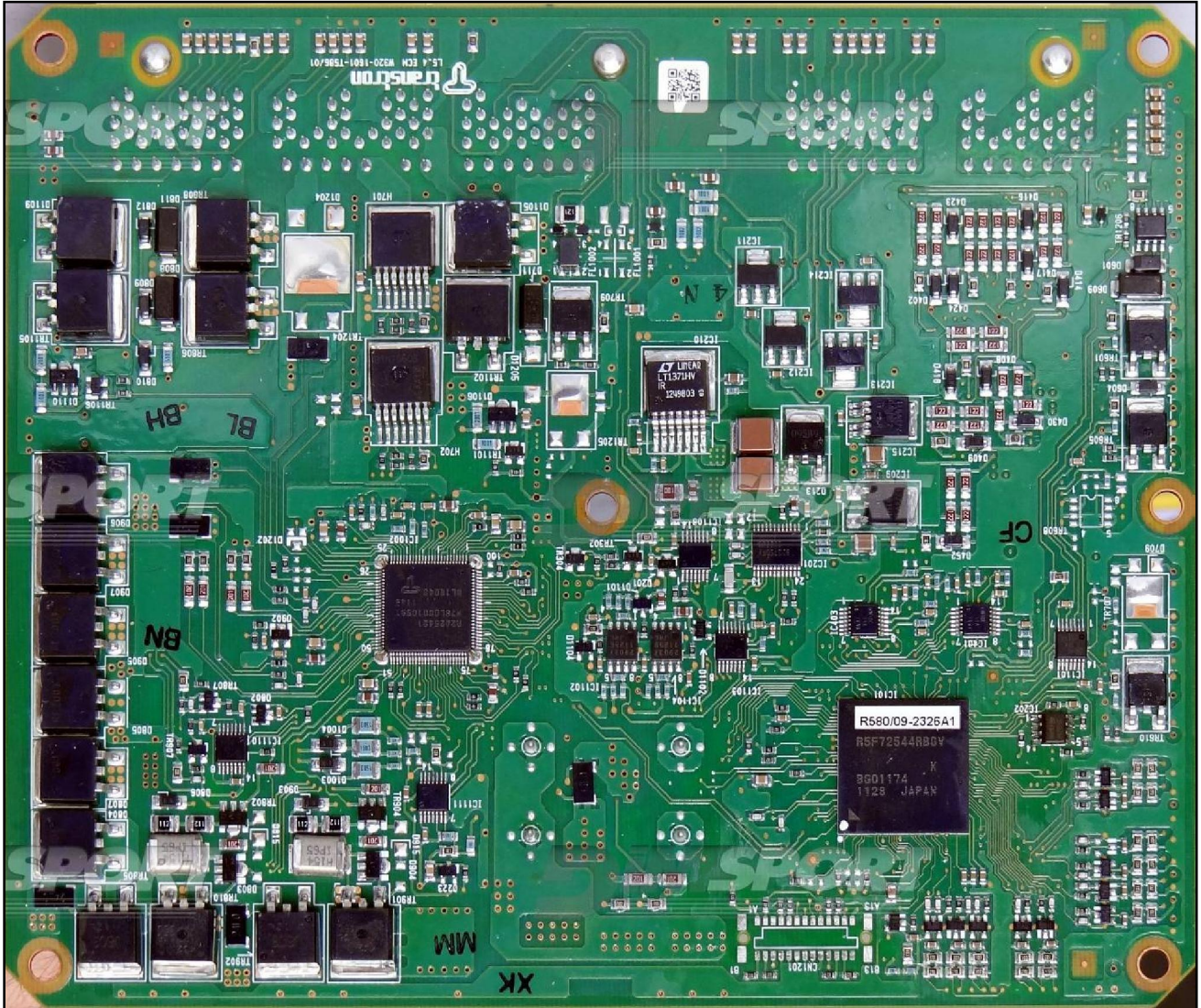
TRANSTRON SH72544R ISUZU

plugin 490



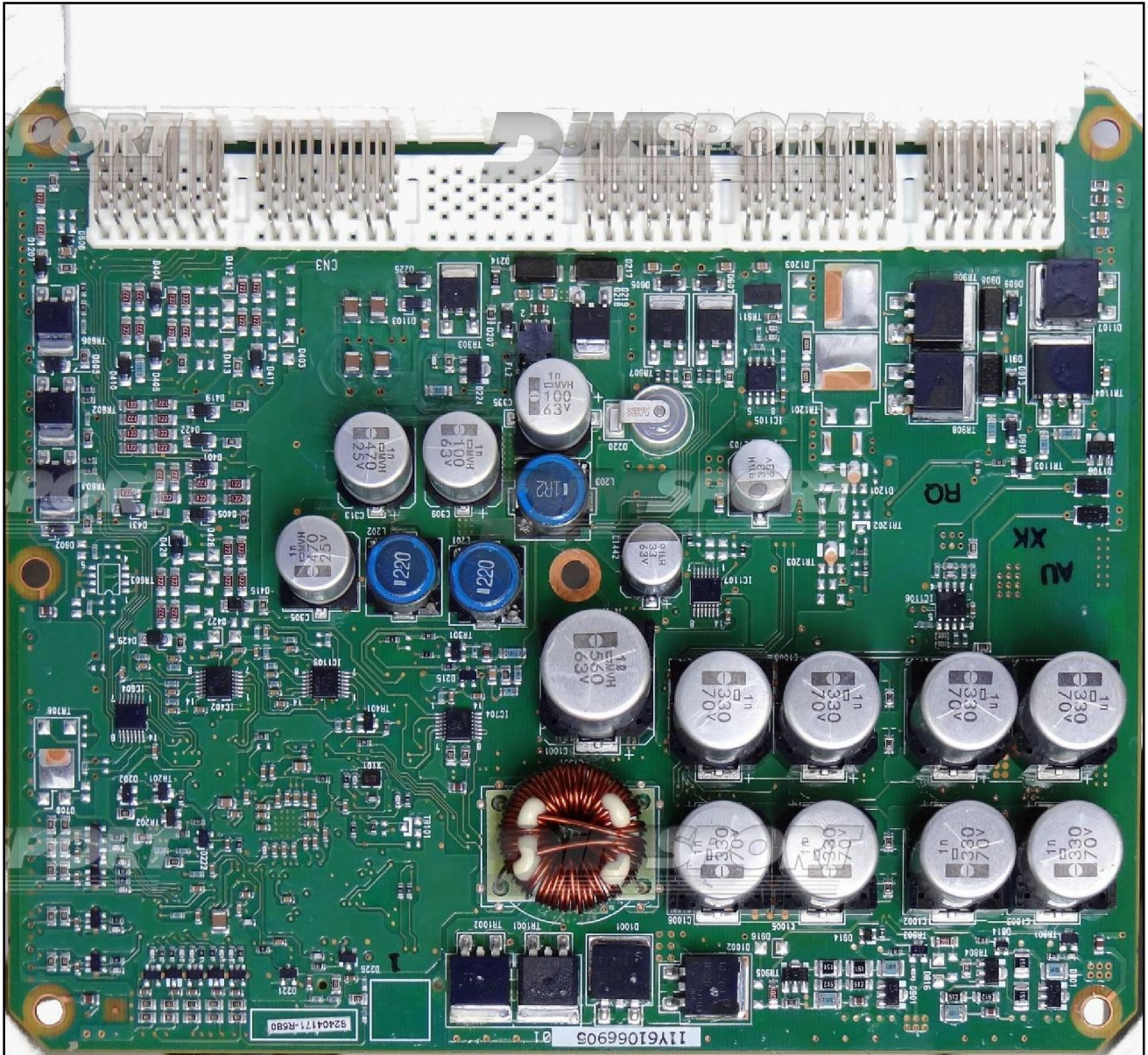
# TRANSTRON SH72544R ISUZU

motherboard side for reading and writing



# TRANSTRON SH72544R ISUZU

motherboard side for writing only

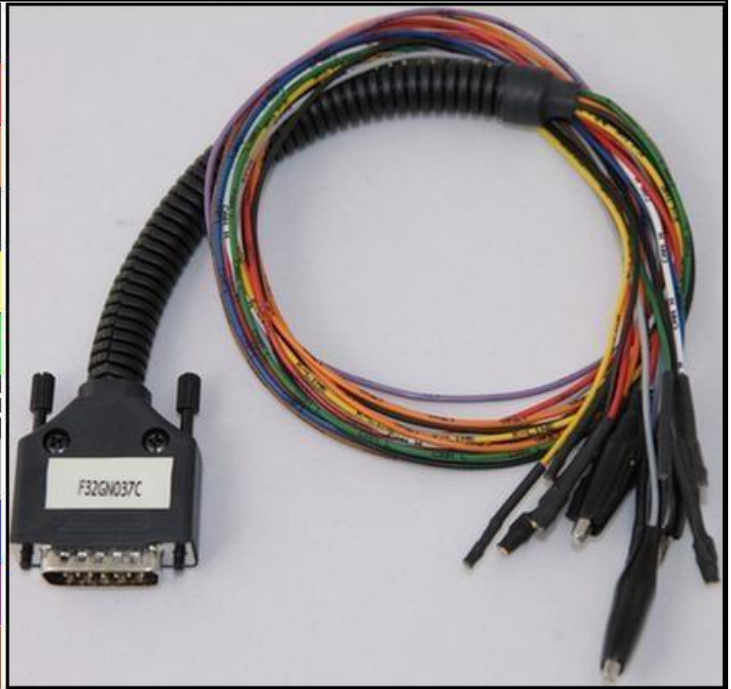


## TRANSTRON SH72544R ISUZU

### DIRECT CONNECTION

In order to connect to the ECU use the CABLE F32GN037C.  
Make sure that the POWER led (red) on Trasdata is ON.

COLORE FILO WIRE COLOUR	DESCRIZIONE DESCRIPTION
ROSSO RED	POSITIVO DIRETTO POWER BATTERY
ARANCIO ORANGE	POSITIVO SOTTO QUADRO POWER SWITCH ON
NERO BLACK	MASSA GND
GIALLO YELLOW	KLINE
VERDE GREEN	CAN LOW
BIANCO WHITE	CAN HIGH
GRIGIO GREY	POL4 BOOT
BLU BLUE	POL5 CNF 1
VIOLA/GRIGIO PURPLE/GREY	TENSIONE PROG. PROG. VOLTAGE
MARRONE BROWN	RESET



### WARNING:

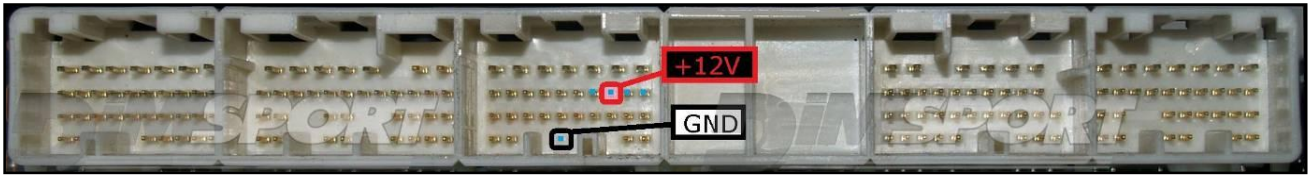
Due to the relevant power absorbed by the ECU at the beginning of the communication it is necessary to feed the ECU with an external power supply or a car battery. Connect the power cable F32GN003 to the Trasdata and then to the power source.

The ECU must be powered through the Trasdata using the F32GN0037C cable.



## TRANSTRON SH72544R ISUZU

### ECU CONNECTOR



#### **WARNING :**

on this ECU you must use two different flat cables: one is for the READING procedure and one is for the WRITING procedure.

## TRANSTRON SH72544R ISUZU

### **DIRECT CONNECTION – ECU READING:**

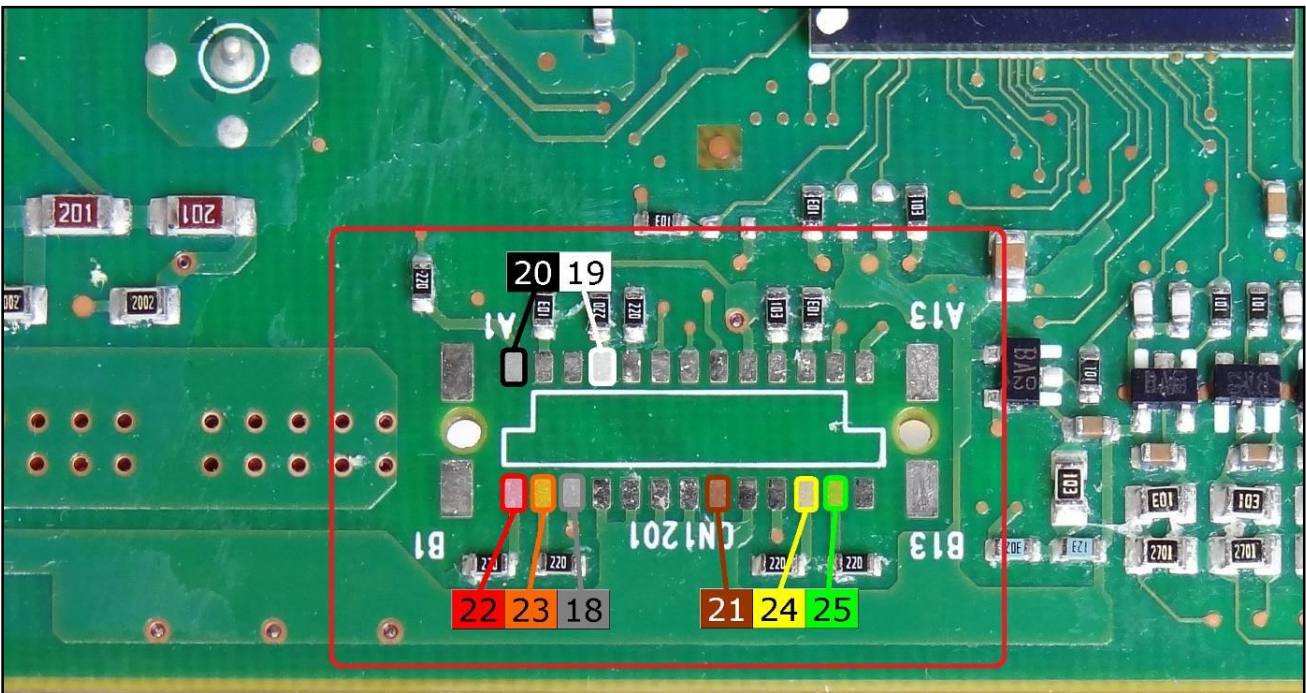
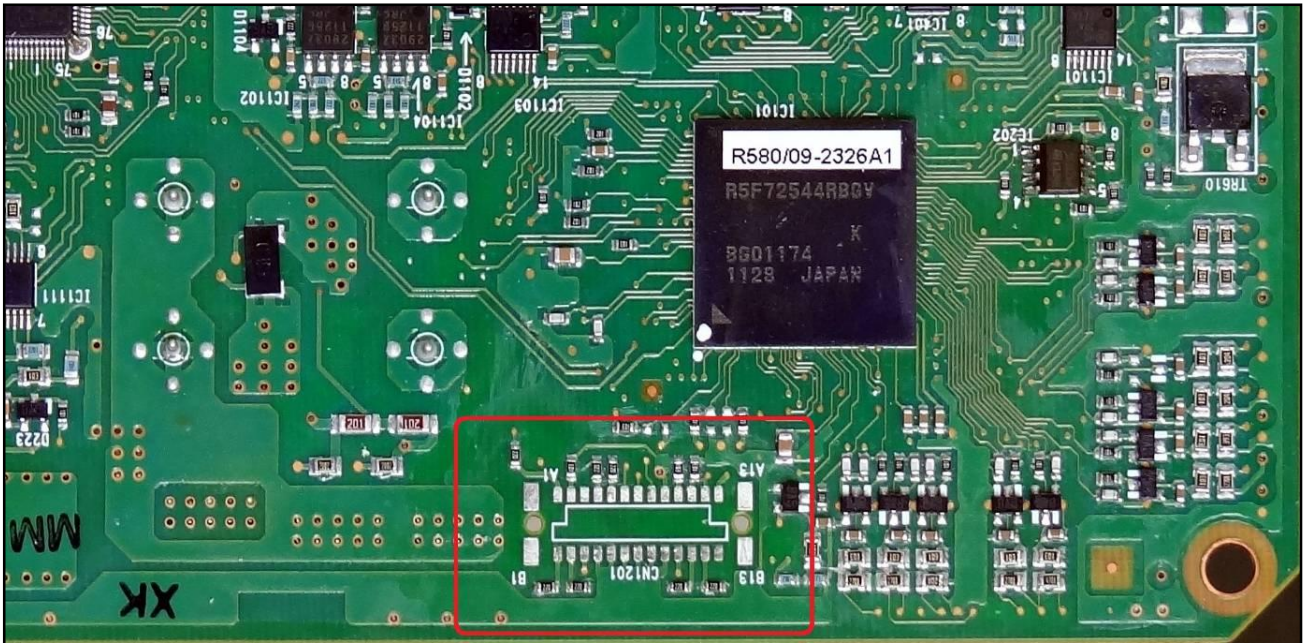
For the READING procedure use the FLAT cable F34NTF53



Pin	Colore Colour
11	Non usato Not used
12	Non usato Not used
13	Non usato Not used
14	Non usato Not used
15	Non usato Not used
16	Blu Blue
17	Viola Violet
18	Grigio Grey
19	Bianco White
20	Nero Black
21	Marrone Brown
22	Rosso Red
23	Arancio Orange
24	Giallo Yellow
25	Verde Green
26	Non usato Not used



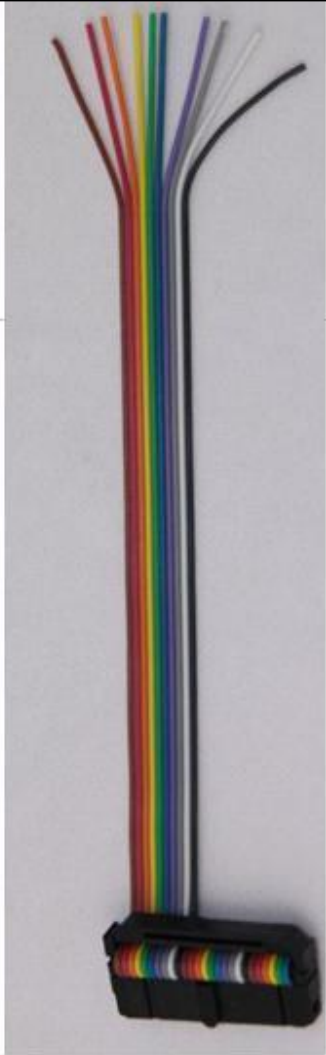
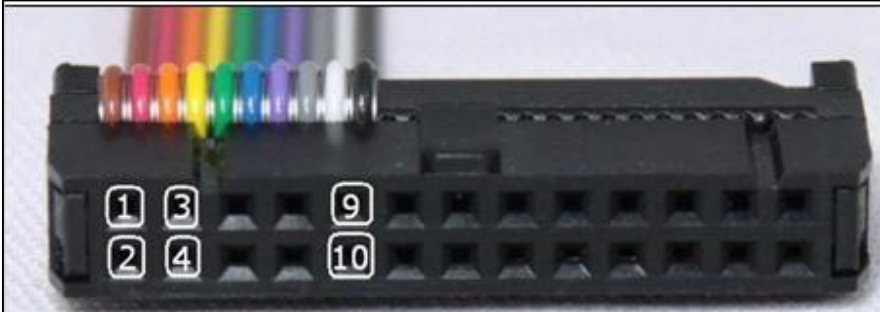
# TRANSTRON SH72544R ISUZU



## TRANSTRON SH72544R ISUZU

### **DIRECT CONNECTION – ECU WRITING:**

For the WRITING procedure use the FLAT cable F34NTF51

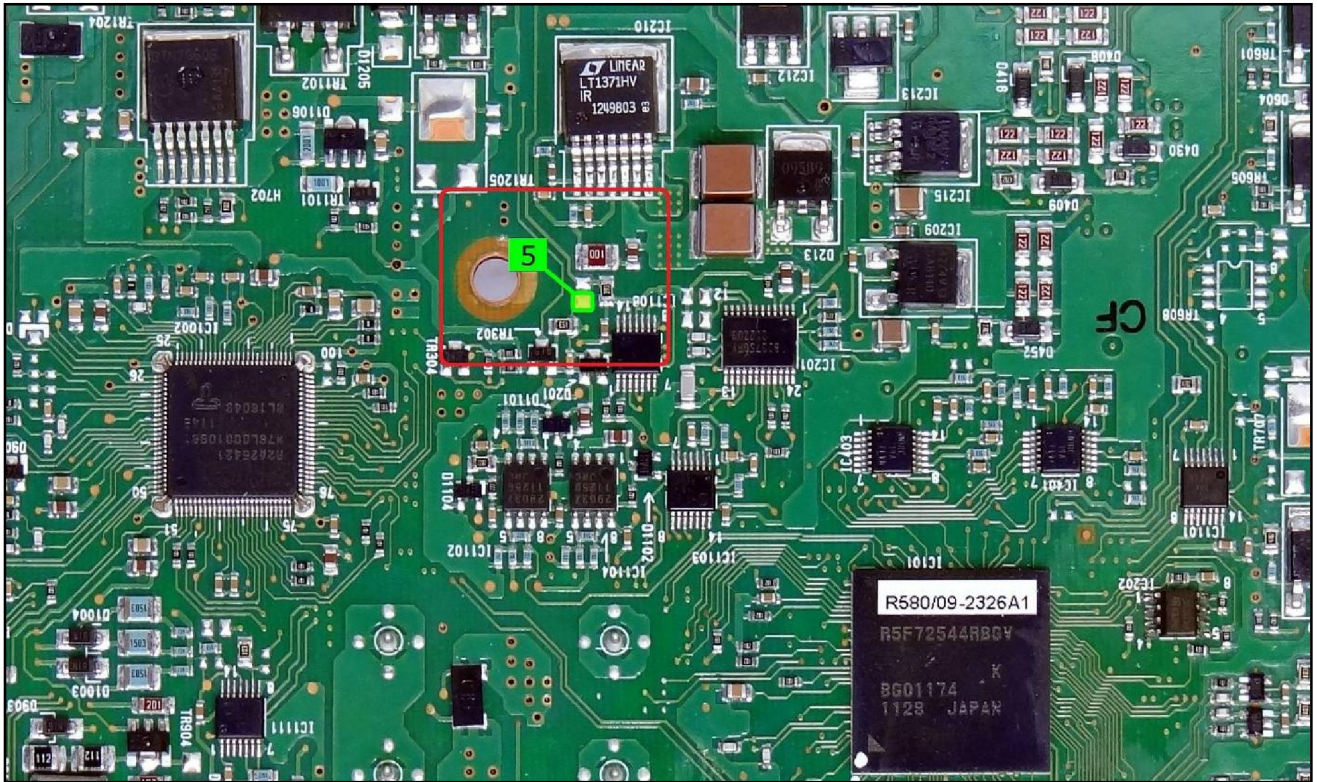


Pin	Colore Colour
1	Marrone Brown
2	Non usato Not used
3	Non usato Not used
4	Giallo Yellow
5	Verde Green
6	Blu Blue
7	Viola Violet
8	Grigio Grey
9	Bianco White
10	Nero Black



# TRANSTRON SH72544R ISUZU

For the writing procedure it is necessary to work on both ECU sides.  
ECU Microprocessor side



ECU condensers side

